



For Release: Tuesday, August 13, 2019

19-1480-KAN

MOUNTAIN-PLAINS INFORMATION OFFICE: Kansas City, Mo.

Technical information: (816) 285-7000 BLSInfoKansasCity@bls.gov www.bls.gov/regions/mountain-plains

Media contact: (816) 285-7000

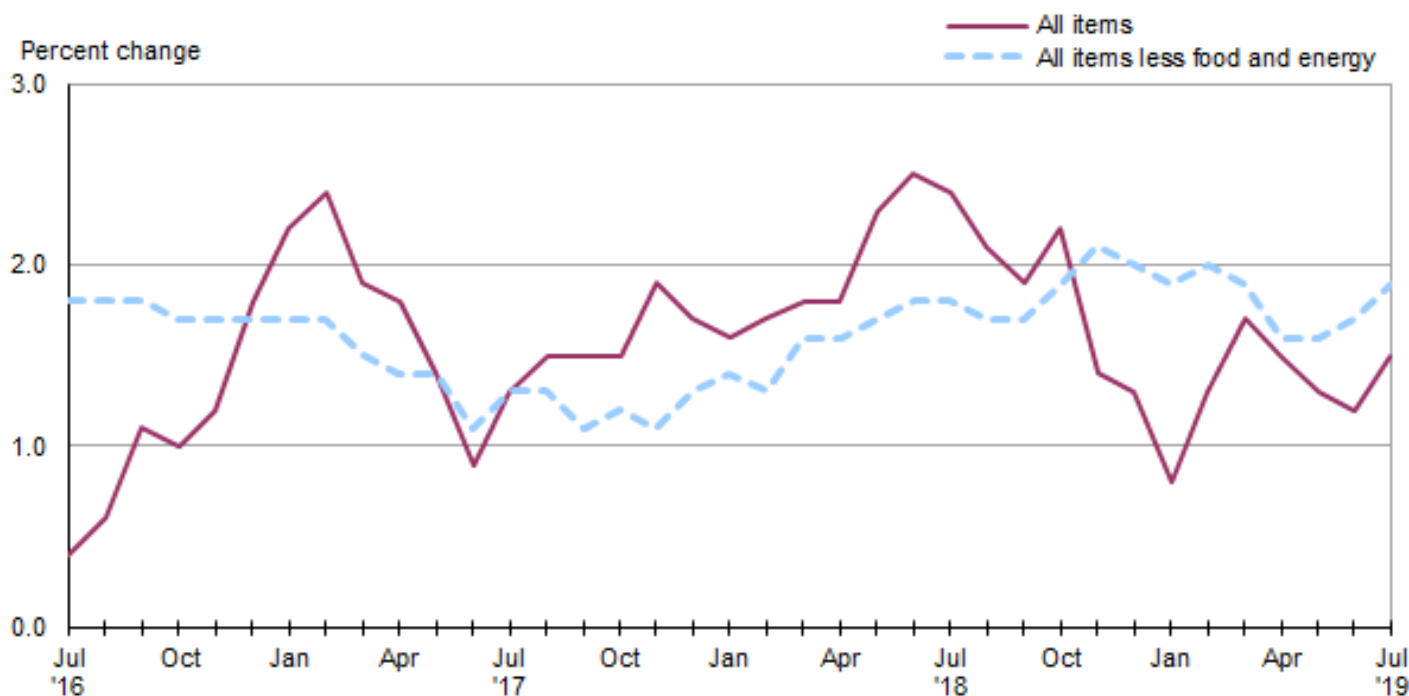
Consumer Price Index, Midwest Region – July 2019

Prices in the Midwest increased 0.2 percent in July and up 1.5 percent over the year

The Consumer Price Index for All Urban Consumers (CPI-U) in the Midwest increased 0.2 percent in July, the U.S. Bureau of Labor Statistics reported today. Higher costs for gasoline and shelter had the largest upward impacts on the index, while lower prices for food at home and utility (piped) gas service had the largest offsetting movements. The index for all items less food and energy edged 0.2 percent higher in July, energy costs turned up 1.2 percent, and food prices declined 0.2 percent. (Data in this report are not seasonally adjusted. Accordingly, month-to-month changes may reflect the impact of seasonal influences.)

The CPI-U for the Midwest rose 1.5 percent over the latest 12 months. (See [chart 1](#) and [table A.](#)) Food prices increased 1.2 percent. The energy index, which includes motor fuel and household fuels, declined 1.9 percent. The index for all items less food and energy was up 1.9 percent from July 2018 to July 2019. (See [table 1.](#))

Chart 1. Over-the-year percent change in CPI-U, Midwest region, July 2016–July 2019



Source: U.S. Bureau of Labor Statistics.

Food

Food prices in the Midwest were down 0.2 percent from June to July. The decrease was due to a 0.5-percent decline in prices for food at home. Prices for food away from home increased 0.2 percent.

From July 2018 to July 2019, the index for food advanced 1.2 percent. Costs for food away from home were up 2.8 percent, and prices for food at home were virtually unchanged (-0.1 percent) over the year.

Energy

The energy index turned up 1.2 percent in July. The monthly increase reflected higher prices for gasoline (2.1 percent) and electricity (1.3 percent). Lower prices for utility (piped) gas service (-2.7 percent) partially offset the increases.

Energy costs declined 1.9 percent since July 2018 due to over-the-year decreases in prices for utility (piped) gas service and gasoline, -5.1 percent and -2.5 percent, respectively. Electricity prices were 0.7 percent higher than a year ago.

All items less food and energy

The index for all items less food and energy for the Midwest edged up 0.2 percent in July. Among the expenditure categories that registered higher costs were shelter (0.2 percent), new and used motor vehicles (0.6 percent) and medical care services (0.5 percent). Decreases in prices for education and communication (-0.2 percent), motor vehicle insurance (-0.4 percent) and medical care commodities (-0.5 percent) were among those that moderated the increase.

The index for all items less food and energy was up 1.9 percent from July 2018 to July 2019. Higher costs for shelter (3.5 percent) led the increase.

The Midwest Consumer Price Index for All Urban Consumers (CPI-U) stood at 238.760 in July 2019. A typical market basket of goods and services that cost \$100.00 in the 1982-84 base period cost \$238.76 in July 2019.

CPI-W

In July, the Midwest Consumer Price Index for Urban Wage Earners and Clerical Workers (CPI-W) was 232.979. The CPI-W increased 0.3 percent in July and advanced 1.4 percent over the year.

Table A. Midwest region CPI-U 1-month and 12-month percent changes, all items index, not seasonally adjusted

Month	2015		2016		2017		2018		2019	
	1-month	12-month	1-month	12-month	1-month	12-month	1-month	12-month	1-month	12-month
January.....	-0.6	-0.3	0.3	0.8	0.7	2.2	0.6	1.6	0.2	0.8
February.....	0.3	-0.5	0.0	0.4	0.2	2.4	0.2	1.7	0.7	1.3
March.....	0.6	-0.9	0.6	0.5	0.1	1.9	0.2	1.8	0.6	1.7
April.....	0.1	-1.1	0.4	0.8	0.4	1.8	0.4	1.8	0.3	1.5
May.....	0.4	-0.8	0.4	0.8	0.0	1.4	0.5	2.3	0.3	1.3
June.....	0.5	-0.7	0.6	0.8	0.0	0.9	0.2	2.5	0.0	1.2
July.....	0.0	-0.5	-0.5	0.4	0.0	1.3	0.0	2.4	0.2	1.5
August.....	0.0	-0.3	0.1	0.6	0.3	1.5	0.0	2.1		
September.....	-0.3	-0.8	0.2	1.1	0.3	1.5	0.1	1.9		
October.....	-0.1	-0.3	-0.1	1.0	-0.2	1.5	0.1	2.2		
November.....	-0.5	-0.2	-0.3	1.2	0.2	1.9	-0.6	1.4		
December.....	-0.6	0.0	0.1	1.8	-0.2	1.7	-0.4	1.3		

The August 2019 Consumer Price Index for the Midwest region is scheduled to be released on Thursday, September 12, 2019.

Technical Note

The Consumer Price Index (CPI) is a measure of the average change in prices over time in a fixed market basket of goods and services. The Bureau of Labor Statistics publishes CPIs for two population groups: (1) a CPI for All Urban Consumers (CPI-U) which covers approximately 93 percent of the total population and (2) a CPI for Urban Wage Earners and Clerical Workers (CPI-W) which covers approximately 29 percent of the total population. The CPI-U includes, in addition to wage earners and clerical workers, groups such as professional, managerial, and technical workers, the self-employed, short-term workers, the unemployed, and retirees and others not in the labor force.

The CPI is based on prices of food, clothing, shelter, and fuels, transportation fares, charges for doctors' and dentists' services, drugs, and the other goods and services that people buy for day-to-day living. Each month, prices are collected in 75 urban areas across the country from about 6,000 housing units and approximately 22,000 retail establishments—department stores, supermarkets, hospitals, filling stations, and other types of stores and service establishments. All taxes directly associated with the purchase and use of items are included in the index.

The index measures price changes from a designated reference date (1982-84) that equals 100.0. An increase of 16.5 percent, for example, is shown as 116.5. This change can also be expressed in dollars as follows: the price of a base period "market basket" of goods and services in the CPI has risen from \$10 in 1982-84 to \$11.65. For further details see the CPI home page on the Internet at www.bls.gov/cpi and the BLS Handbook of Methods, Chapter 17, The Consumer Price Index, available on the Internet at www.bls.gov/opub/hom/pdf/homch17.pdf.

In calculating the index, price changes for the various items in each location are averaged together with weights that represent their importance in the spending of the appropriate population group. Local data are then combined to obtain a U.S. city average. Because the sample size of a local area is smaller, the local area index is subject to substantially more sampling and other measurement error than the national index. In addition, local indexes are not adjusted for seasonal influences. As a result, local area indexes show greater volatility than the national index, although their long-term trends are quite similar. **NOTE: Area indexes do not measure differences in the level of prices between cities; they only measure the average change in prices for each area since the base period.**

The Midwest region is comprised of Illinois, Indiana, Iowa, Kansas, Michigan, Minnesota, Missouri, Nebraska, North Dakota, Ohio, South Dakota, and Wisconsin.

Information in this release will be made available to sensory impaired individuals upon request. Voice phone: (202) 691-5200; Federal Relay Service: (800) 877-8339.

Table 1. Consumer Price Index for All Urban Consumers (CPI-U): Indexes and percent changes for selected periods, Midwest Region, (1982-84=100 unless otherwise noted) (not seasonally adjusted)

Expenditure category	Indexes			Percent change from		
	May 2019	Jun. 2019	Jul. 2019	Jul. 2018	May 2019	Jun. 2019
All items	238.219	238.288	238.760	1.5	0.2	0.2
All items (December 1977 = 100).....	387.596	387.709	388.476			
Food and beverages	247.517	247.960	247.594	1.3	0.0	-0.1
Food	246.953	247.346	246.889	1.2	0.0	-0.2
Food at home	228.000	227.950	226.822	-0.1	-0.5	-0.5
Cereals and bakery products	259.730	262.143	260.334	-0.6	0.2	-0.7
Meats, poultry, fish, and eggs.....	249.425	247.922	247.967	-0.4	-0.6	0.0
Dairy and related products	195.331	195.142	195.282	-1.1	0.0	0.1
Fruits and vegetables	273.099	270.639	266.628	-0.5	-2.4	-1.5
Nonalcoholic beverages and beverage materials.....	163.014	161.891	163.567	2.3	0.3	1.0
Other food at home	197.784	199.528	197.460	0.1	-0.2	-1.0
Food away from home.....	278.434	279.497	280.046	2.8	0.6	0.2
Alcoholic beverages	253.144	254.268	255.142	2.4	0.8	0.3
Housing	232.790	233.655	234.158	2.7	0.6	0.2
Shelter	279.672	280.235	280.794	3.5	0.4	0.2
Rent of primary residence(1).....	278.085	278.668	278.982	3.2	0.3	0.1
Owners' equivalent rent of residences(1) (2).....	283.587	284.189	284.697	3.4	0.4	0.2
Owners' equivalent rent of primary residence(1)(2).....	283.553	284.155	284.655	3.4	0.4	0.2
Fuels and utilities.....	219.835	225.255	225.592	-0.2	2.6	0.1
Household energy	176.947	182.522	182.804	-1.1	3.3	0.2
Energy services(1)	183.384	189.738	190.036	-1.0	3.6	0.2
Electricity(1).....	202.154	212.048	214.893	0.7	6.3	1.3
Utility (piped) gas service(1).....	141.504	141.773	137.967	-5.1	-2.5	-2.7
Household furnishings and operations	115.298	114.497	114.949	0.6	-0.3	0.4
Apparel	114.920	114.069	113.802	0.3	-1.0	-0.2
Transportation	207.945	206.242	207.344	-0.1	-0.3	0.5
Private transportation	202.413	200.922	202.530	-0.2	0.1	0.8
New and used motor vehicles(3).....	97.347	97.834	98.447	0.5	1.1	0.6
New vehicles	137.761	137.458	137.566	0.1	-0.1	0.1
New cars and trucks(3)(4).....	97.388	97.178	97.242	0.1	-0.1	0.1
New cars(4).....	134.363	133.982	133.884	-0.3	-0.4	-0.1
Used cars and trucks.....	138.123	140.351	142.013	1.5	2.8	1.2
Motor fuel	254.253	244.784	249.836	-2.6	-1.7	2.1
Gasoline (all types).....	252.987	243.457	248.612	-2.5	-1.7	2.1
Gasoline, unleaded regular(4).....	246.676	237.244	242.197	-2.6	-1.8	2.1
Gasoline, unleaded midgrade(4)(5).....	288.763	279.181	287.529	-2.3	-0.4	3.0
Gasoline, unleaded premium(4).....	274.350	265.543	271.368	-2.0	-1.1	2.2
Motor vehicle insurance(6).....	731.394	734.564	731.670	0.0	0.0	-0.4
Medical care	492.063	493.894	495.492	2.4	0.7	0.3
Medical care commodities.....	391.030	390.713	388.785	-1.0	-0.6	-0.5
Medical care services.....	525.925	528.484	531.278	3.3	1.0	0.5
Professional services	420.560	421.252	421.410	1.0	0.2	0.0
Recreation(3).....	121.203	120.979	121.251	-0.6	0.0	0.2
Education and communication(3).....	137.108	137.330	137.018	-0.7	-0.1	-0.2
Tuition, other school fees, and child care(6) ..	1,200.659	1,202.214	1,194.919	0.8	-0.5	-0.6

Note: See footnotes at end of table.

Table 1. Consumer Price Index for All Urban Consumers (CPI-U): Indexes and percent changes for selected periods, Midwest Region, (1982-84=100 unless otherwise noted) (not seasonally adjusted) - Continued

Expenditure category	Indexes			Percent change from		
	May 2019	Jun. 2019	Jul. 2019	Jul. 2018	May 2019	Jun. 2019
Other goods and services	434.887	433.359	435.996	2.2	0.3	0.6
Commodity and service group						
Commodities	181.197	180.302	180.816	0.3	-0.2	0.3
Commodities less food and beverages	149.055	147.697	148.519	-0.3	-0.4	0.6
Nondurables less food and beverages.....	199.757	196.511	197.861	-0.6	-0.9	0.7
Durables	101.490	101.554	101.940	0.1	0.4	0.4
Services.....	297.028	298.116	298.540	2.2	0.5	0.1
Special aggregate indexes						
All items less shelter.....	225.726	225.624	226.069	0.6	0.2	0.2
All items less medical care	226.204	226.189	226.607	1.4	0.2	0.2
Commodities less food	152.308	151.007	151.833	-0.2	-0.3	0.5
Nondurables	223.461	221.917	222.474	0.4	-0.4	0.3
Nondurables less food.....	202.555	199.556	200.878	-0.4	-0.8	0.7
Services less rent of shelter(2).....	324.691	326.395	326.679	0.9	0.6	0.1
Services less medical care services.....	279.957	280.935	281.182	2.1	0.4	0.1
Energy	212.344	210.885	213.389	-1.9	0.5	1.2
All items less energy	243.706	243.932	244.202	1.8	0.2	0.1
All items less food and energy	243.848	244.045	244.444	1.9	0.2	0.2

Footnotes

(1) This index series was calculated using a Laspeyres estimator. All other item stratum index series were calculated using a geometric means estimator.

(2) Indexes on a December 1982=100 base.

(3) Indexes on a December 1997=100 base.

(4) Special index based on a substantially smaller sample.

(5) Indexes on a December 1993=100 base.

(6) Indexes on a December 1977=100 base.

Note: Index applies to a month as a whole, not to any specific date.