



For Release: Wednesday, August 11, 2021

21-1481-KAN

MOUNTAIN-PLAINS INFORMATION OFFICE: Kansas City, Mo.

Technical information: (816) 285-7000 BLSInfoKansasCity@bls.gov www.bls.gov/regions/mountain-plains

Media contact: (816) 285-7000

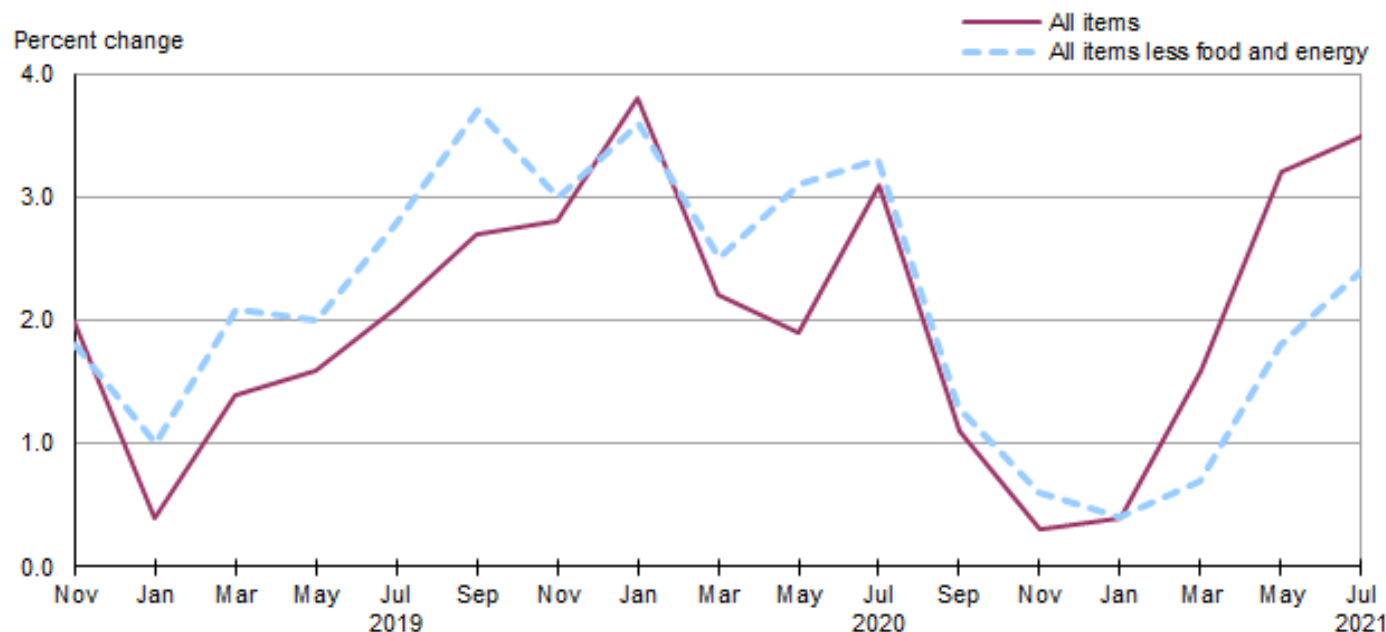
Consumer Price Index, Denver-Aurora-Lakewood area – July 2021

Area prices rise 1.8 percent in June and July, up 3.5 percent from a year ago

Prices in the Denver-Aurora-Lakewood area, as measured by the Consumer Price Index for All Urban Consumers (CPI-U), advanced 1.8 percent for the two months ending in July 2021, the U.S. Bureau of Labor Statistics reported today. Regional Commissioner Michael Hirniak noted that the July increase was primarily influenced by higher prices for all items less food and energy, but increases for the energy and food indexes also contributed. (Data in this report are not seasonally adjusted. Accordingly, bi-monthly changes may reflect seasonal influences.)

Over the last 12 months, the CPI-U rose 3.5 percent. (See [chart 1.](#)) The index for all items less food and energy increased 2.4 percent over the year. Energy prices jumped 24.3 percent, while food prices increased 2.6 percent. (See [table 1.](#))

Chart 1. Over-the-year percent change in CPI-U, Denver-Aurora-Lakewood, CO, November 2018–July 2021



Source: U.S. Bureau of Labor Statistics.

Food

Food prices rose 1.2 percent for the two months ending in July. Prices for food at home increased 1.3 percent, while prices for food away from home increased 1.1 percent for the same period.

Over the year, food prices increased 2.6 percent. Prices for food away from home increased 4.0 percent and prices for food at home increased 1.5 percent since a year ago.

Energy

The energy index rose 9.7 percent for the two months ending in July. The increase was mainly due to higher prices for gasoline (14.8 percent). Prices for electricity decreased 0.4 percent for the same period.

Energy prices jumped 24.3 percent over the year, largely due to higher prices for gasoline (37.4 percent). Prices paid for electricity advanced 2.2 percent during the past year.

All items less food and energy

The index for all items less food and energy increased 1.4 percent in the latest two-month period. Higher prices for shelter (1.9 percent), used cars and trucks (12.2), and recreation (3.6 percent) were partially offset by lower prices for household furnishings and operations (-2.5 percent), apparel (-3.3 percent), and education and communication (-0.8 percent).

Over the year, the index for all items less food and energy rose 2.4 percent. Components contributing to the increase included owners' equivalent rent of residences (3.2 percent), used cars and trucks (41.7 percent), and apparel (15.0 percent). Partly offsetting the increases were price decreases in education and communication (-1.5 percent), new vehicles (-1.2 percent), and motor vehicle insurance (-2.8 percent).

The September 2021 Consumer Price Index for the Denver-Aurora-Lakewood area is scheduled to be released on Wednesday, October 13, 2021.

Coronavirus (COVID-19) Pandemic Impact on July 2021 Consumer Price Index Data

Data collection by personal visit for the Consumer Price Index (CPI) program has been suspended since March 16, 2020. When possible, data normally collected by personal visit were collected either online or by phone. Additionally, data collection in July 2021 was affected by the temporary closing or limited operations of certain types of establishments. These factors resulted in an increase in the number of prices considered temporarily unavailable and imputed. While the CPI program attempted to collect as much data as possible, many indexes are based on smaller amounts of collected prices than usual, and a small number of indexes that are normally published were not published this month. Additional information is available at www.bls.gov/covid19/effects-of-covid-19-pandemic-on-consumer-price-index.htm.

Technical Note

The Consumer Price Index (CPI) measures the average change in prices over time in a fixed market basket of goods and services. The Bureau of Labor Statistics publishes CPIs for two population groups: (1) a CPI for All Urban Consumers (CPI-U) which covers approximately 93 percent of the total U.S. population and (2) a CPI for Urban Wage Earners and Clerical Workers (CPI-W) which covers approximately 29 percent of the total U.S. population. The CPI-U includes, in addition to wage earners and clerical workers, groups such as professional, managerial, and technical workers, the self-employed, short-term workers, the unemployed, and retirees and others not in the labor force.

The CPI is based on prices of food, clothing, shelter, and fuels, transportation fares, charges for doctors' and dentists' services, drugs, and the other goods and services that people buy for day-to-day living. Each month, prices are collected in 75 urban areas across the country from about 6,000 housing units and approximately 22,000 retail establishments—department stores, supermarkets, hospitals, filling stations, and other types of stores and service establishments. All taxes directly associated with the purchase and use of items are included in the index.

The index measures price changes from a designated reference date. For most of the CPI-U the reference base is 1982-84 equals 100. An increase of 7 percent from the reference base, for example, is shown as 107.000. Alternatively, that relationship can also be expressed as the price of a base period market basket of goods and services rising from \$100 to \$107. For further details see the CPI home page on the internet at www.bls.gov/cpi and the CPI section of the BLS Handbook of Methods available on the internet at www.bls.gov/opub/hom/cpi/.

In calculating the index, price changes for the various items in each location are averaged together with weights that represent their importance in the spending of the appropriate population group. Local data are then combined to obtain a U.S. city average. Because the sample size of a local area is smaller, the local area index is subject to substantially more sampling and other measurement error than the national index. In addition, local indexes are not adjusted for seasonal influences. As a result, local area indexes show greater volatility than the national index, although their long-term trends are quite similar. **NOTE: Area indexes do not measure differences in the level of prices between cities; they only measure the average change in prices for each area since the base period.**

The Denver-Aurora-Lakewood metropolitan area is comprised of Adams, Arapahoe, Broomfield, Clear Creek, Denver, Douglas, Elbert, Gilpin, Jefferson, and Park counties in Colorado.

Information in this release will be made available to individuals with sensory impairments upon request. Voice phone: (202) 691-5200; Federal Relay Service: (800) 877-8339.

Table 1. Consumer Price Index for All Urban Consumers (CPI-U): Indexes and percent changes for selected periods, Denver-Aurora-Lakewood, CO (1982-84=100 unless otherwise noted)

Item and Group	Indexes			Percent change from -		
	May 2021	Jun. 2021	Jul. 2021	Jul. 2020	May 2021	Jun. 2021
All items	280.154	-	285.268	3.5	1.8	-
All items (1967 = 100)	934.198	-	951.251			
Food and beverages	253.507	-	256.399	2.6	1.1	-
Food	258.555	-	261.578	2.6	1.2	-
Food at home	238.262	240.289	241.252	1.5	1.3	0.4
Cereals and bakery products	286.091	-	283.445	2.5	-0.9	-
Meats, poultry, fish, and eggs	235.080	-	247.951	1.7	5.5	-
Dairy and related products	207.665	-	206.004	-0.1	-0.8	-
Fruits and vegetables	281.880	-	283.694	2.5	0.6	-
Nonalcoholic beverages and beverage materials(1)	162.332	-	164.693	-2.8	1.5	-
Other food at home	214.910	-	213.034	2.9	-0.9	-
Food away from home	285.818	-	288.845	4.0	1.1	-
Alcoholic beverages	209.124	-	210.781	3.3	0.8	-
Housing	279.172	-	282.988	0.5	1.4	-
Shelter	321.700	324.703	327.813	-0.1	1.9	1.0
Rent of primary residence	333.535	334.279	336.496	1.0	0.9	0.7
Owners' equivalent rent of residences(2)	317.228	320.351	323.027	3.2	1.8	0.8
Owners' equivalent rent of primary residence(2)	317.228	320.351	323.027	3.2	1.8	0.8
Fuels and utilities	239.678	-	243.489	3.9	1.6	-
Household energy	156.188	156.410	159.441	6.5	2.1	1.9
Energy services	154.542	154.747	157.776	6.4	2.1	2.0
Electricity	161.941	162.103	161.226	2.2	-0.4	-0.5
Utility (piped) gas service	-	-	-	-	-	-
Household furnishings and operations	132.115	-	128.834	2.8	-2.5	-
Apparel	111.847	-	108.201	15.0	-3.3	-
Transportation	281.928	-	299.144	15.6	6.1	-
Private transportation	278.350	-	299.243	14.9	7.5	-
New and used motor vehicles(3)	-	-	123.732	13.5	-	-
New vehicles(1)	-	-	223.464	-1.2	-	-
Used cars and trucks(1)	346.846	-	389.261	41.7	12.2	-
Motor fuel	257.352	273.888	295.084	37.7	14.7	7.7
Gasoline (all types)	255.725	272.262	293.590	37.4	14.8	7.8
Gasoline, unleaded regular(4)	247.991	264.805	286.176	38.7	15.4	8.1
Gasoline, unleaded midgrade(4)(5)	251.901	266.868	286.691	33.3	13.8	7.4
Gasoline, unleaded premium(4)	280.548	295.464	316.037	31.9	12.6	7.0
Motor vehicle insurance(1)	3,145.929	-	3,105.349	-2.8	-1.3	-
Medical care	637.353	-	636.469	0.8	-0.1	-
Recreation(3)	161.872	-	167.771	4.0	3.6	-
Education and communication(3)	126.838	-	125.791	-1.5	-0.8	-
Tuition, other school fees, and childcare(1) ...	1,116.080	-	1,099.264	0.6	-1.5	-
Other goods and services	387.899	-	398.314	3.5	2.7	-
Commodity and service group						
Commodities	185.011	-	191.122	7.5	3.3	-
Commodities less food and beverages	150.505	-	157.428	10.6	4.6	-
Nondurables less food and beverages	183.531	-	190.338	12.8	3.7	-
Durables	117.262	-	123.803	8.2	5.6	-
Services	364.184	-	367.904	1.4	1.0	-
Special aggregate indexes						
All items less shelter	260.196	-	264.838	5.6	1.8	-
All items less medical care	263.865	-	269.165	3.8	2.0	-
Commodities less food	152.883	-	159.663	10.2	4.4	-

Note: See footnotes at end of table.

Table 1. Consumer Price Index for All Urban Consumers (CPI-U): Indexes and percent changes for selected periods, Denver-Aurora-Lakewood, CO (1982-84=100 unless otherwise noted) - Continued

Item and Group	Indexes			Percent change from -		
	May 2021	Jun. 2021	Jul. 2021	Jul. 2020	May 2021	Jun. 2021
Nondurables	218.836	-	223.953	7.2	2.3	-
Nondurables less food.....	185.191	-	191.631	12.0	3.5	-
Services less rent of shelter(2).....	421.160	-	420.934	3.3	-0.1	-
Services less medical care services.....	340.025	-	343.897	1.4	1.1	-
Energy	202.209	210.180	221.805	24.3	9.7	5.5
All items less energy	288.815	-	292.797	2.5	1.4	-
All items less food and energy	295.200	-	299.362	2.4	1.4	-

(1) Indexes on a January 1978=100 base.

(2) Indexes on a November 1982=100 base.

(3) Indexes on a December 1997=100 base.

(4) Special index based on a substantially smaller sample.

(5) Index on a December 1993=100 base.

- Data not available.