



For Release: Tuesday, July 13, 2021

21-1302-KAN

MOUNTAIN-PLAINS INFORMATION OFFICE: Kansas City, Mo.

Technical information: (816) 285-7000 BLSInfoKansasCity@bls.gov www.bls.gov/regions/mountain-plains

Media contact: (816) 285-7000

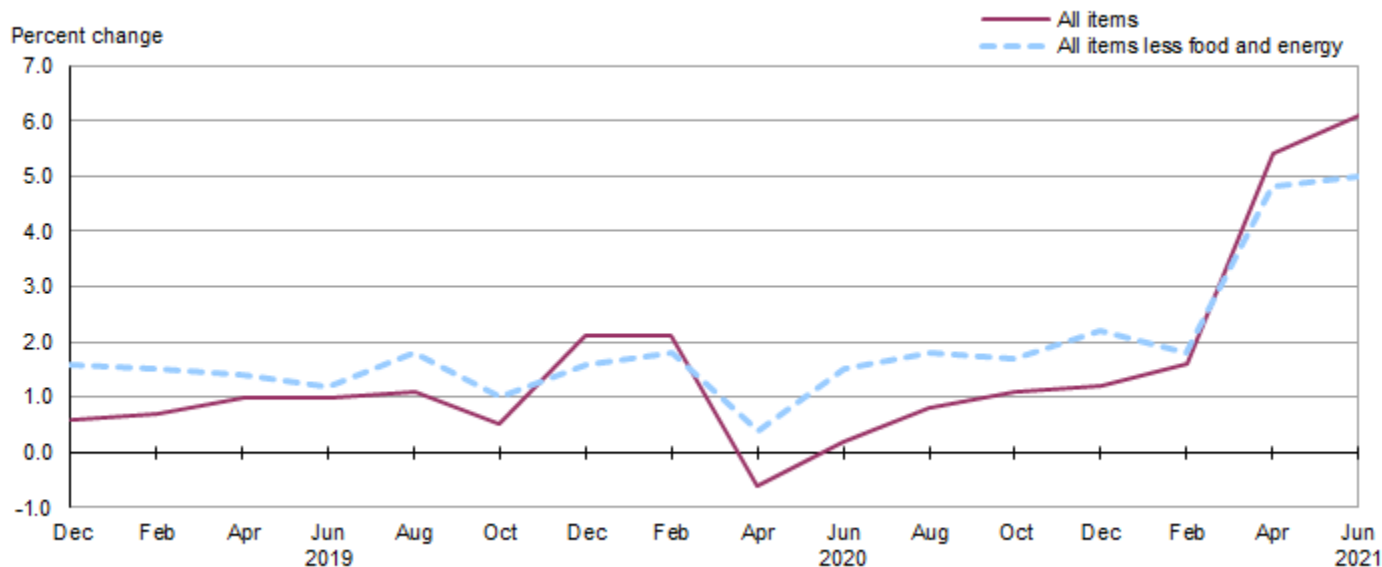
Consumer Price Index, St. Louis – June 2021

Area prices up 2.4 percent over the past two months, up 6.1 percent from a year ago

Prices in the St. Louis area, as measured by the Consumer Price Index for All Urban Consumers (CPI-U), advanced 2.4 percent for the two months ending in June 2021, the U.S. Bureau of Labor Statistics reported today. Regional Commissioner Michael Hirniak noted that the June increase was most influenced by higher prices for energy, though prices for all items less food and energy were another major factor. (Data in this report are not seasonally adjusted. Accordingly, bi-monthly changes may reflect seasonal influences.)

Over the last 12 months, the CPI-U advanced 6.1 percent. (See [chart 1.](#)) The index for all items less food and energy rose 5.0 percent over the year and energy prices jumped 24.1 percent. Food prices advanced 3.4 percent. (See [table 1.](#))

Chart 1. Over-the-year percent change in CPI-U, St. Louis, MO-IL, December 2018–June 2021



Source: U.S. Bureau of Labor Statistics.

Food

Food prices increased 3.4 percent for the two months ending in June. (See [table 1.](#)) Prices for food away from home increased 6.3 percent and prices for food at home advanced 1.2 percent for the same period.

Over the year, food prices advanced 3.4 percent. Prices for food away from home rose 7.9 percent and food at home edged up 0.1 percent since a year ago.

Energy

The energy index jumped 14.3 percent for the two months ending in June. The increase was due to higher prices for electricity (35.4 percent) and gasoline (6.6 percent). In contrast, prices for natural gas service declined 0.6 percent for the same period.

Energy prices rose 24.1 percent over the year, largely due to higher prices for gasoline (49.7 percent). Prices paid for natural gas service increased 15.0 percent and prices for electricity advanced 4.1 percent during the past year.

All items less food and energy

The index for all items less food and energy advanced 1.1 percent in the latest two-month period. Higher prices for used cars and trucks (17.7 percent) and shelter (1.0 percent) were partially offset by lower prices for recreation (-3.5 percent) and medical care (-0.2 percent).

Over the year, the index for all items less food and energy rose 5.0 percent. Components contributing to the increase included shelter (4.2 percent) and used cars and trucks (45.8 percent). Partly offsetting the increases were price decreases in other goods and services (-2.4 percent) and recreation (-0.4 percent).

The August 2021 Consumer Price Index for the St. Louis area is scheduled to be released on Tuesday, September 14, 2021.

Coronavirus (COVID-19) Pandemic Impact on June 2021 Consumer Price Index Data

Data collection by personal visit for the Consumer Price Index (CPI) program has been suspended since March 16, 2020. When possible, data normally collected by personal visit were collected either online or by phone. Additionally, data collection in June 2021 was affected by the temporary closing or limited operations of certain types of establishments. These factors resulted in an increase in the number of prices considered temporarily unavailable and imputed. While the CPI program attempted to collect as much data as possible, many indexes are based on smaller amounts of collected prices than usual, and a small number of indexes that are normally published were not published this month. Additional information is available at <https://www.bls.gov/covid19/effects-of-covid-19-pandemic-on-consumer-price-index.htm>.

Technical Note

The Consumer Price Index (CPI) is a measure of the average change in prices over time in a fixed market basket of goods and services. The Bureau of Labor Statistics publishes CPIs for two population groups: (1) a CPI for All Urban Consumers (CPI-U) which covers approximately 93 percent of the total U.S. population and (2) a CPI for Urban Wage Earners and Clerical Workers (CPI-W) which covers approximately 29 percent of the total U.S. population. The CPI-U includes, in addition to wage earners and clerical workers, groups such as professional, managerial, and technical workers, the self-employed, short-term workers, the unemployed, and retirees and others not in the labor force.

The CPI is based on prices of food, clothing, shelter, and fuels, transportation fares, charges for doctors' and dentists' services, drugs, and the other goods and services that people buy for day-to-day living. Each month, prices are collected in 75 urban areas across the country from about 6,000 housing units and approximately 22,000 retail establishments—department stores, supermarkets, hospitals, filling stations, and other types of stores and service establishments. All taxes directly associated with the purchase and use of items are included in the index.

The index measures price changes from a designated reference date; for most of the CPI-U the reference base is 1982-84 equals 100. An increase of 7 percent from the reference base, for example, is shown as 107.000. Alternatively, that relationship can also be expressed as the price of a base period market basket of goods and services rising from \$100 to \$107. For further details see the CPI home page on the internet at www.bls.gov/cpi and the CPI section of the BLS Handbook of Methods available on the internet at www.bls.gov/opub/hom/cpi/.

In calculating the index, price changes for the various items in each location are averaged together with weights that represent their importance in the spending of the appropriate population group. Local data are then combined to obtain a U.S. city average. Because the sample size of a local area is smaller, the local area index is subject to substantially more sampling and other measurement error than the national index. In addition, local indexes are not adjusted for seasonal influences. As a result, local area indexes show greater volatility than the national index, although their long-term trends are quite similar. **NOTE: Area indexes do not measure differences in the level of prices between cities; they only measure the average change in prices for each area since the base period.**

The St. Louis, MO-IL, area covered in this release includes Bond, Calhoun, Clinton, Jersey, Macoupin, Madison, Monroe, and St. Clair counties in Illinois; and Franklin, Jefferson, Lincoln, St. Charles, St. Louis, and Warren counties and St. Louis City in Missouri.

Information in this release will be made available to individuals with sensory impairments upon request. Voice phone: (202) 691-5200; Federal Relay Service: (800) 877-8339.

Table 1. Consumer Price Index for All Urban Consumers (CPI-U): Indexes and percent changes for selected periods, St. Louis, MO-IL (1982-84=100 unless otherwise noted)

Item and Group	Indexes			Percent change from -		
	Apr. 2021	May 2021	Jun. 2021	Jun. 2020	Apr. 2021	May 2021
All items	242.022	-	247.777	6.1	2.4	-
All items (1967 = 100)	718.845	-	735.939			
Food and beverages	267.772	-	276.077	3.5	3.1	-
Food	264.860	-	273.837	3.4	3.4	-
Food at home	245.728	245.595	248.635	0.1	1.2	1.2
Cereals and bakery products	221.770	-	217.073	-3.9	-2.1	-
Meats, poultry, fish, and eggs	262.561	-	278.350	0.9	6.0	-
Dairy and related products	159.984	-	157.618	-3.1	-1.5	-
Fruits and vegetables	378.871	-	386.500	-0.2	2.0	-
Nonalcoholic beverages and beverage materials(1)	177.892	-	176.959	0.5	-0.5	-
Other food at home	245.235	-	244.473	2.1	-0.3	-
Food away from home	296.850	-	315.685	7.9	6.3	-
Alcoholic beverages	268.977	-	269.506	5.3	0.2	-
Housing	234.739	-	241.904	4.4	3.1	-
Shelter	278.951	278.128	281.873	4.2	1.0	1.3
Rent of primary residence	256.799	256.933	263.084	3.8	2.4	2.4
Owners' equivalent rent of residences(2)	291.760	291.664	294.207	3.0	0.8	0.9
Owners' equivalent rent of primary residence(2)	291.760	291.664	294.207	3.0	0.8	0.9
Fuels and utilities	221.347	-	256.083	7.0	15.7	-
Household energy	186.306	186.286	228.273	7.0	22.5	22.5
Energy services	187.800	187.762	230.930	6.9	23.0	23.0
Electricity	179.503	179.836	243.103	4.1	35.4	35.2
Utility (piped) gas service	168.732	168.042	167.784	15.0	-0.6	-0.2
Household furnishings and operations	124.335	-	127.831	2.7	2.8	-
Apparel	132.545	-	131.668	7.0	-0.7	-
Transportation	207.294	-	217.792	20.7	5.1	-
Private transportation	209.961	-	221.524	20.8	5.5	-
New and used motor vehicles(3)	103.373	-	111.286	21.9	7.7	-
New vehicles(1)	223.085	-	227.711	10.8	2.1	-
Used cars and trucks(1)	364.324	-	428.902	45.8	17.7	-
Motor fuel	253.379	266.121	269.958	49.6	6.5	1.4
Gasoline (all types)	249.046	261.728	265.513	49.7	6.6	1.4
Gasoline, unleaded regular(4)	239.385	251.914	255.639	50.9	6.8	1.5
Gasoline, unleaded midgrade(4)(5)	298.417	310.869	314.880	43.6	5.5	1.3
Gasoline, unleaded premium(4)	258.143	268.399	271.348	39.9	5.1	1.1
Motor vehicle insurance(1)	577.510	-	576.931	-3.8	-0.1	-
Medical care	479.250	-	478.199	1.3	-0.2	-
Recreation(3)	124.949	-	120.537	-0.4	-3.5	-
Education and communication(3)	146.930	-	147.793	4.6	0.6	-
Tuition, other school fees, and childcare(1) ...	1,266.622	-	1,271.500	1.1	0.4	-
Other goods and services	335.147	-	334.602	-2.4	-0.2	-
Commodity and service group						
Commodities	195.895	-	202.741	9.9	3.5	-
Commodities less food and beverages	159.801	-	165.750	13.9	3.7	-
Nondurables less food and beverages	215.022	-	217.726	13.0	1.3	-
Durables	108.918	-	115.633	14.7	6.2	-
Services	289.637	-	294.559	3.9	1.7	-
Special aggregate indexes						
All items less shelter	231.308	-	238.188	7.0	3.0	-
All items less medical care	230.104	-	236.155	6.6	2.6	-
Commodities less food	164.259	-	170.086	13.4	3.5	-

Note: See footnotes at end of table.

Table 1. Consumer Price Index for All Urban Consumers (CPI-U): Indexes and percent changes for selected periods, St. Louis, MO-IL (1982-84=100 unless otherwise noted) - Continued

Item and Group	Indexes			Percent change from -		
	Apr. 2021	May 2021	Jun. 2021	Jun. 2020	Apr. 2021	May 2021
Nondurables	241.762	-	247.202	7.7	2.3	-
Nondurables less food.....	220.068	-	222.613	12.3	1.2	-
Services less rent of shelter(2).....	308.444	-	315.578	3.6	2.3	-
Services less medical care services.....	271.581	-	276.729	4.1	1.9	-
Energy	217.318	222.959	248.306	24.1	14.3	11.4
All items less energy	247.683	-	251.281	4.8	1.5	-
All items less food and energy	244.728	-	247.535	5.0	1.1	-

Footnotes

(1) Indexes on an March 1978=100 base.

(2) Indexes on a November 1982=100 base.

(3) Indexes on a December 1997=100 base.

(4) Special index based on a substantially smaller sample.

(5) Index on a December 1993=100.

- Data not available.