

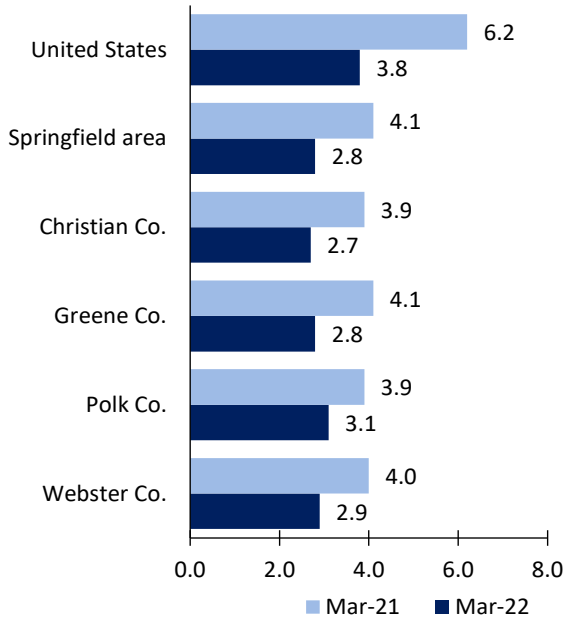
Springfield, MO Area Economic Summary

Updated May 03, 2022

This summary presents a sampling of economic information for the area; supplemental data are provided for regions and the nation. Subjects include **unemployment, employment, wages, prices, spending, and benefits**. All data are not seasonally adjusted and some may be subject to revision. Area definitions may differ by subject. For more area summaries and geographic definitions, see www.bls.gov/regions/economic-summaries.htm.

Unemployment rates for the nation and selected areas

Unemployment rates



Source: U.S. BLS, Local Area Unemployment Statistics.

Average weekly wages for all industries by county

Springfield area, third quarter 2021

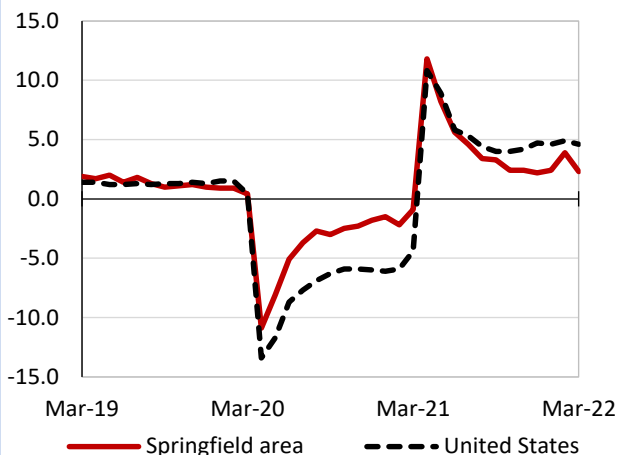
(U.S. = \$1,251; Area = \$926)



Source: U.S. BLS, Quarterly Census of Employment and Wages.

Over-the-year changes in employment on nonfarm payrolls and employment by major industry sector

12-month percent changes in employment



Source: U.S. BLS, Current Employment Statistics.

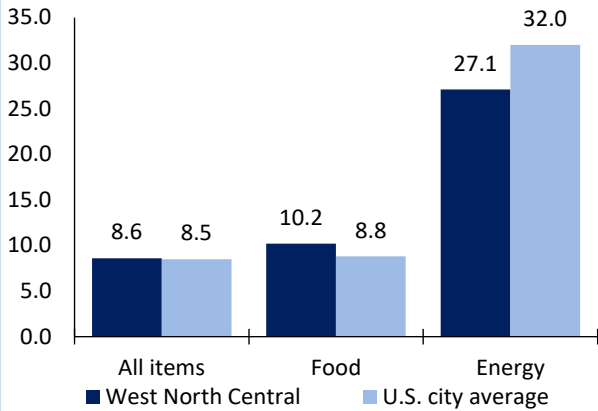
| Springfield area employment (number in thousands) | Mar. 2022 | Change from Mar. 2021 to Mar. 2022 | |
|--|-----------|------------------------------------|---------|
| | | Number | Percent |
| Total nonfarm | 222.2 | 5.0 | 2.3 |
| Mining, logging, and construction | 9.7 | -0.1 | -1.0 |
| Manufacturing | 18.0 | 0.5 | 2.9 |
| Trade, transportation, and utilities | 53.1 | 3.2 | 6.4 |
| Information | 3.5 | -0.3 | -7.9 |
| Financial activities | 11.6 | -0.1 | -0.9 |
| Professional and business services | 22.5 | -1.4 | -5.9 |
| Education and health services | 41.4 | 0.5 | 1.2 |
| Leisure and hospitality | 23.1 | 2.8 | 13.8 |
| Other services | 9.1 | 0.4 | 4.6 |
| Government | 30.2 | -0.5 | -1.6 |

Source: U.S. BLS, Current Employment Statistics.



Over-the-year change in the prices paid by urban consumers for selected categories

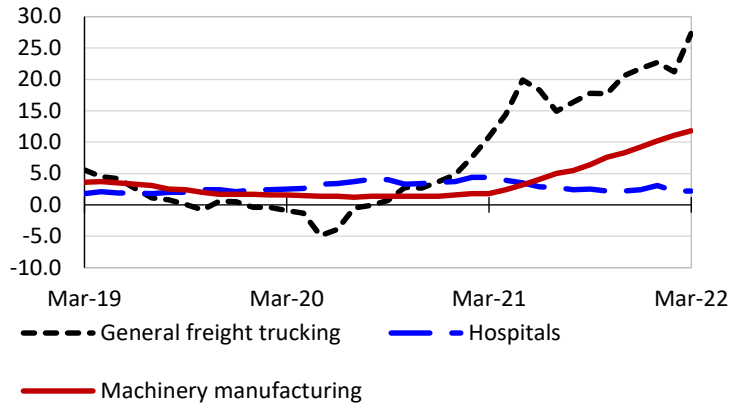
12-month percent change in CPI-U, March 2022



Source: U.S. BLS, Consumer Price Index.

Over-the-year changes in the selling prices received by producers for selected industries nationwide

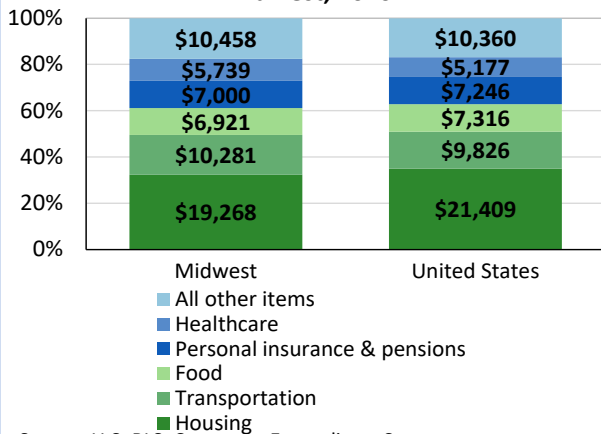
12-month percent changes in PPI



Source: U.S. BLS, Producer Price Index.

Average annual spending and percent distribution for selected categories

Average annual expenditures, United States and Midwest, 2020



Source: U.S. BLS, Consumer Expenditure Survey.

Average hourly wages for selected occupations

| Occupation | Springfield, MO | United States |
|---|-----------------|---------------|
| All occupations | \$21.90 | \$28.01 |
| Nurse practitioners | 47.99 | 56.75 |
| Construction managers | 41.71 | 52.02 |
| Computer user support specialists | 22.89 | 27.72 |
| Heavy and tractor-trailer truck drivers | 20.40 | 24.20 |
| Loan interviewers and clerks | 16.81 | 21.59 |
| Childcare workers | 11.54 | 13.31 |

Source: U.S. BLS, Occupational Employment and Wage Statistics, May 2021.

Employer costs per hour worked for wages and selected employee benefits by geographic division

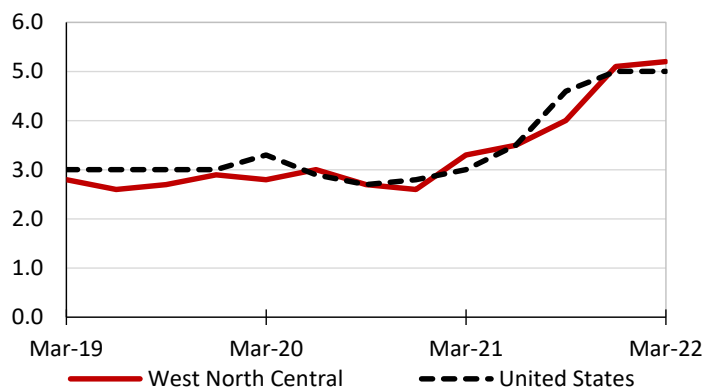
| Private industry, December 2021 | West North Central | United States |
|---------------------------------|--------------------|---------------|
| Total compensation | \$34.07 | \$38.07 |
| Wages and salaries | 23.56 | 26.86 |
| Total benefits | 10.51 | 11.22 |
| Paid leave | 2.41 | 2.85 |
| Vacation | 1.26 | 1.46 |
| Supplemental pay | 1.29 | 1.32 |
| Insurance | 3.14 | 2.87 |
| Retirement and savings | 1.08 | 1.32 |
| Legally required benefits | 2.58 | 2.86 |

(1) The states that compose the West North Central census division are: IA, KS, MN, MO, NE, ND, and SD.

Source: U.S. BLS, Employer Costs for Employee Compensation.

Over-the-year changes in wages and salaries

12-month percent changes in ECI



Source: U.S. BLS, Employment Cost Index.

