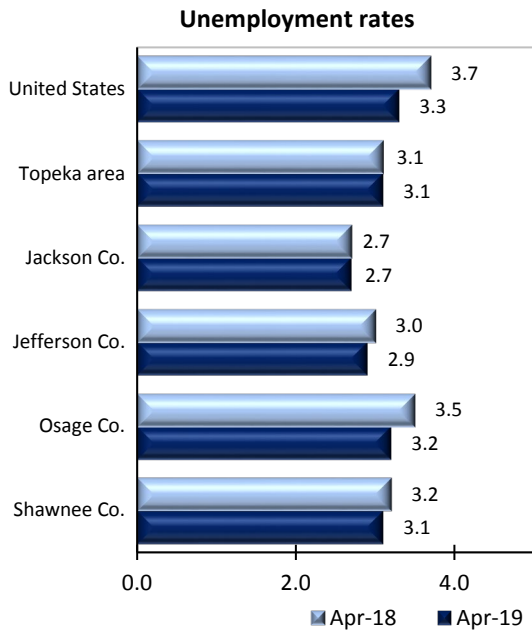


Topeka Area Economic Summary

Updated June 05, 2019

This summary presents a sampling of economic information for the area; supplemental data are provided for regions and the nation. Subjects include **unemployment, employment, wages, prices, spending, and benefits**. All data are not seasonally adjusted and some may be subject to revision. Area definitions may differ by subject. For more area summaries and geographic definitions, see www.bls.gov/regions/economic-summaries.htm.

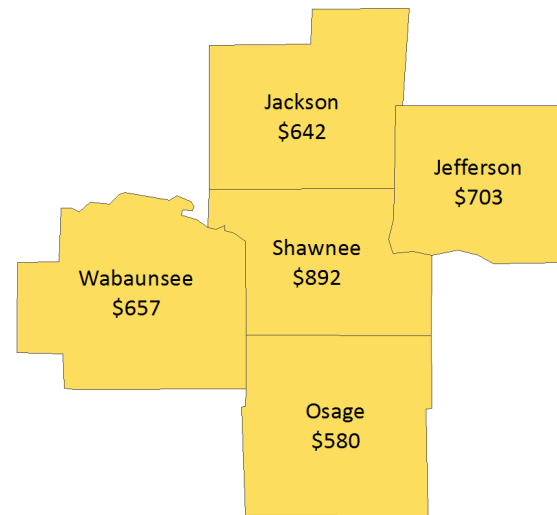
Unemployment rates for the Topeka area, selected area counties, and the nation



Source: U.S. BLS, Local Area Unemployment Statistics.

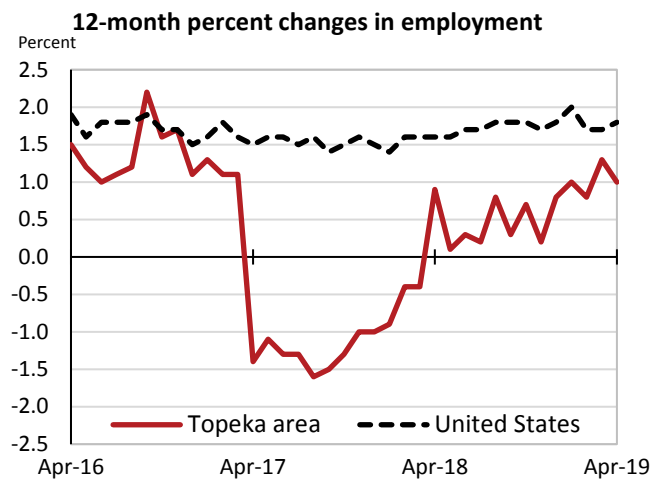
Average weekly wages for all industries by county

Topeka area, 4th quarter 2018
(U.S. = \$1,144; Area = \$865)



Source: U.S. BLS, Quarterly Census of Employment and Wages.

Over-the-year changes in employment on nonfarm payrolls and employment by major industry sector

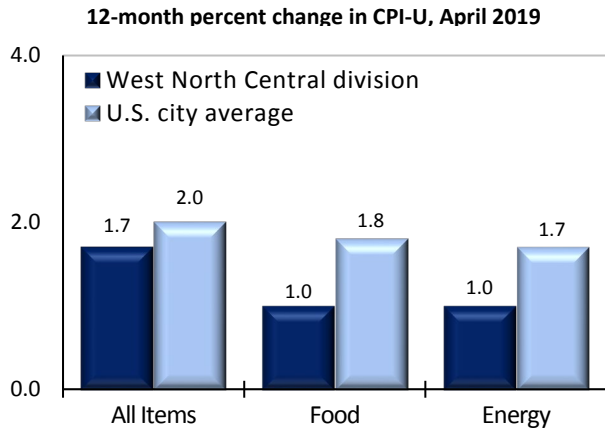


Source: U.S. BLS, Current Employment Statistics.

Topeka area employment (numbers in thousands)	Apr. 2019	Change from Apr. 2018 to Apr. 2019	
		Number	Percent
Total nonfarm	113.5	1.1	1.0
Mining, logging, and construction	5.5	-0.1	-1.8
Manufacturing	8.1	0.3	3.8
Trade, transportation, and utilities	17.3	0.1	0.6
Information	1.4	0.0	0.0
Financial activities	7.8	-0.1	-1.3
Professional and business services	13.5	-0.1	-0.7
Education and health services	18.9	0.6	3.3
Leisure and hospitality	9.0	0.1	1.1
Other services	5.0	0.2	4.2
Government	27.0	0.1	0.4

Source: U.S. BLS, Current Employment Statistics.

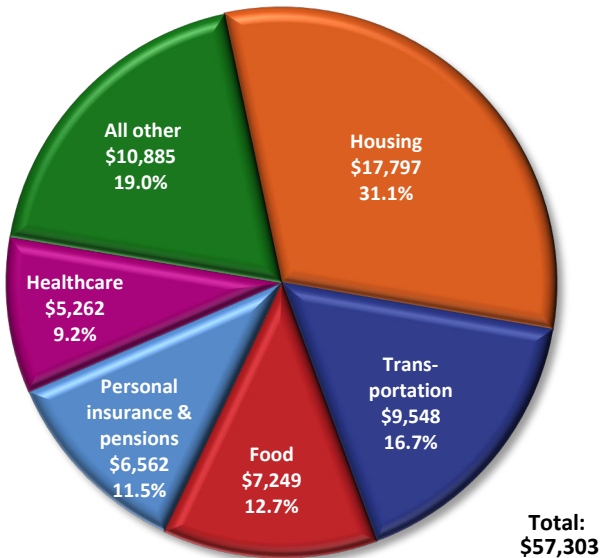
Over-the-year change in the prices paid by urban consumers for selected categories



Source: U.S. BLS, Consumer Price Index.

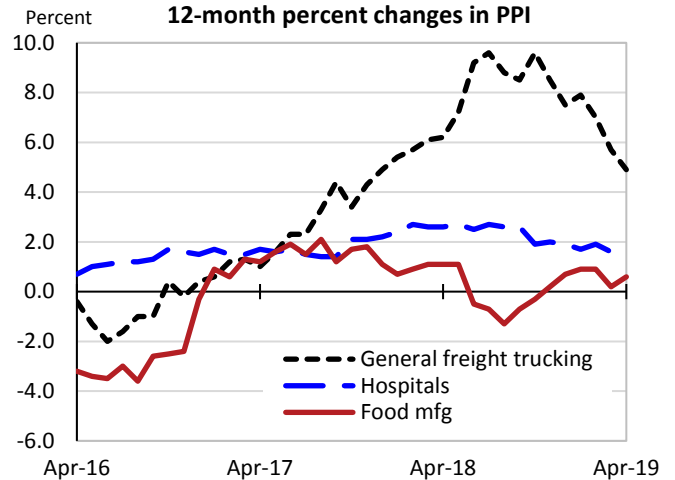
Average annual spending and percent distribution for selected categories

Midwest Region average annual expenditures 2017



Source: U.S. BLS, Consumer Expenditure Survey.

Over-the-year changes in the selling prices received by producers for selected industries nationwide



Source: U.S. BLS, Producer Price Index.

Average hourly wages for selected occupations

Occupation	Topeka area	United States
Total, all occupations	\$21.16	\$24.98
General and operations managers	39.95	59.56
Applications software developers	37.40	51.96
Civil engineers	34.84	45.06
Registered nurses	31.42	36.30
Human resources specialists	28.66	32.11
Accountants and auditors	28.64	37.89
Customer service representatives	17.46	17.53
Social and human service assistants	16.83	17.22
Legal secretaries	15.41	24.06
Construction laborers	15.11	19.40
Retail salespersons	12.34	13.61

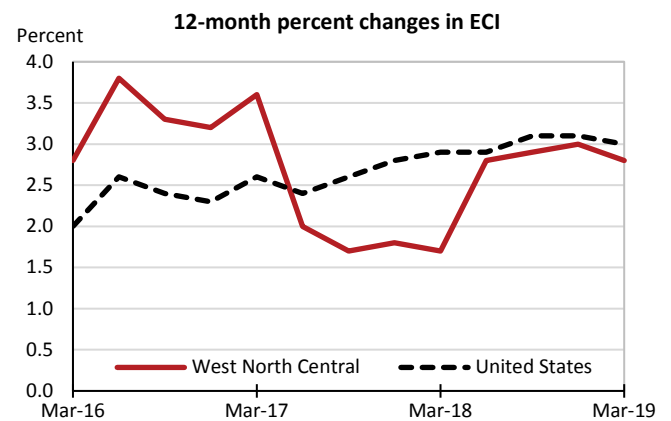
Source: U.S. BLS, Occupational Employment Statistics, May 2018.

Employer costs per hour worked for wages and selected employee benefits by geographic division

Private industry, December 2018	West North Central (1)	United States
Total compensation	\$31.04	\$34.05
Wages and salaries	21.61	23.85
Total benefits	9.43	10.20
Paid leave	2.16	2.44
Vacation	1.15	1.26
Supplemental pay	1.00	1.09
Insurance	2.66	2.71
Retirement and savings	1.17	1.32
Legally required benefits	2.44	2.64

(1) West North Central includes IA, KS, MN, MO, ND, NE, and SD.
Source: U.S. BLS, Employer Costs for Employee Compensation.

Over-the-year changes in wages and salaries



Source: U.S. BLS, Employment Cost Index.