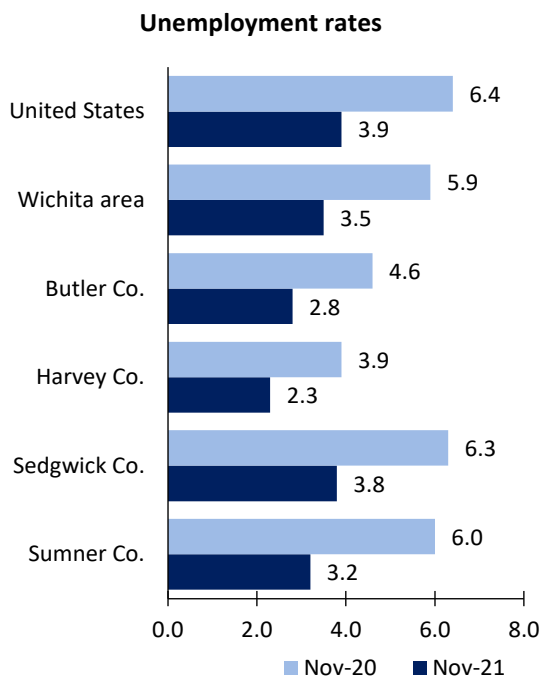


Wichita Area Economic Summary

Updated December 30, 2021

This summary presents a sampling of economic information for the area; supplemental data are provided for regions and the nation. Subjects include **unemployment, employment, wages, prices, spending, and benefits**. All data are not seasonally adjusted and some may be subject to revision. Area definitions may differ by subject. For more area summaries and geographic definitions, see www.bls.gov/regions/economic-summaries.htm.

Unemployment rates for the nation and selected areas

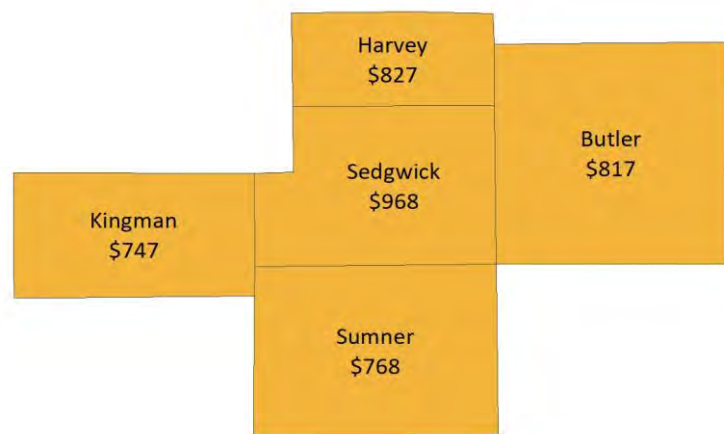


Source: U.S. BLS, Local Area Unemployment Statistics.

Average weekly wages for all industries by county

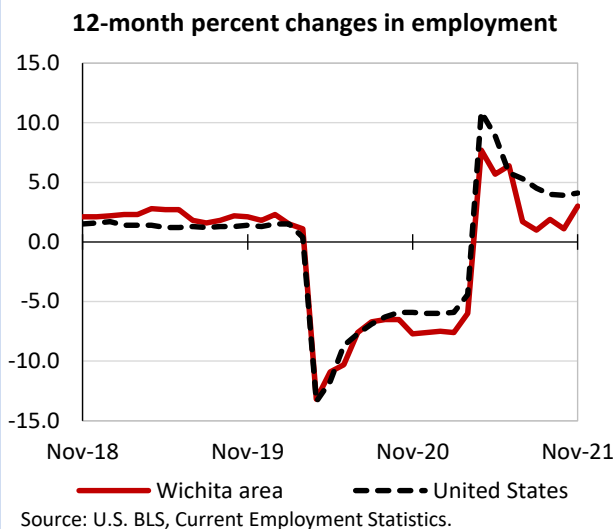
Wichita area, second quarter 2021

(U.S. = \$1,241; Area = \$945)



Source: U.S. BLS, Quarterly Census of Employment and Wages.

Over-the-year changes in employment on nonfarm payrolls and employment by major industry sector



Source: U.S. BLS, Current Employment Statistics.

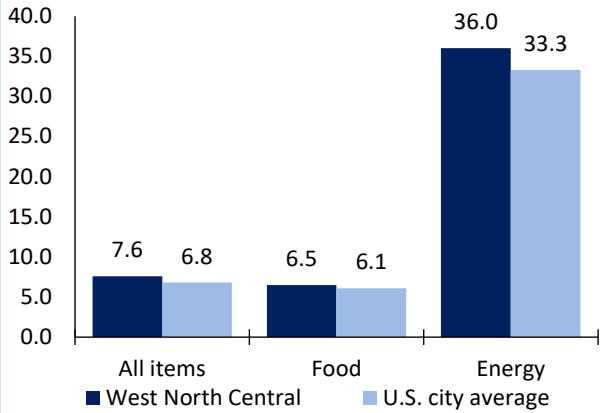
| Wichita area employment (number in thousands) | Nov. 2021 | Change from Nov. 2020 to Nov. 2021 | |
|--|-----------|------------------------------------|---------|
| | | Number | Percent |
| Total nonfarm | 296.4 | 8.6 | 3.0 |
| Mining, logging, and construction | 17.0 | 0.3 | 1.8 |
| Manufacturing | 46.3 | 1.7 | 3.8 |
| Trade, transportation, and utilities | 50.5 | 1.8 | 3.7 |
| Information | 3.6 | -0.1 | -2.7 |
| Financial activities | 11.8 | 0.0 | 0.0 |
| Professional and business services | 34.1 | 0.1 | 0.3 |
| Education and health services | 47.7 | 0.6 | 1.3 |
| Leisure and hospitality | 31.9 | 2.9 | 10.0 |
| Other services | 10.4 | 0.2 | 2.0 |
| Government | 43.1 | 1.1 | 2.6 |

Source: U.S. BLS, Current Employment Statistics.



Over-the-year change in the prices paid by urban consumers for selected categories

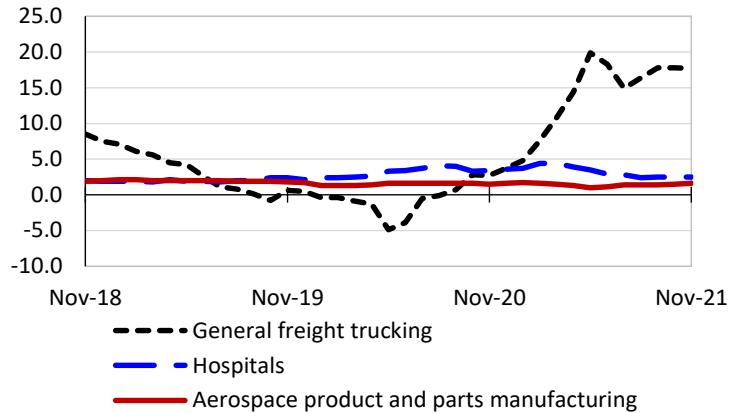
12-month percent change in CPI-U, November 2021



Source: U.S. BLS, Consumer Price Index.

Over-the-year changes in the selling prices received by producers for selected industries nationwide

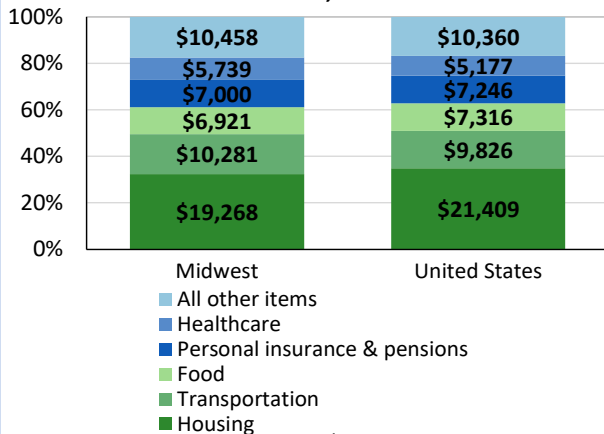
12-month percent changes in PPI



Source: U.S. BLS, Producer Price Index.

Average annual spending and percent distribution for selected categories

Average annual expenditures, United States and Midwest, 2020



Source: U.S. BLS, Consumer Expenditure Survey.

Average hourly wages for selected occupations

| Occupation | Wichita, KS | United States |
|--|-------------|---------------|
| All occupations | \$22.88 | \$27.07 |
| Industrial engineers | 41.14 | 45.01 |
| Aircraft mechanics and service technicians | 27.35 | 33.19 |
| Sheet metal workers | 23.11 | 26.60 |
| Computer user support specialists | 22.03 | 27.40 |
| Machinists | 21.48 | 22.98 |
| Pharmacy aides | 13.01 | 15.50 |

Source: U.S. BLS, Occupational Employment and Wage Statistics, May 2020.

Employer costs per hour worked for wages and selected employee benefits by geographic division

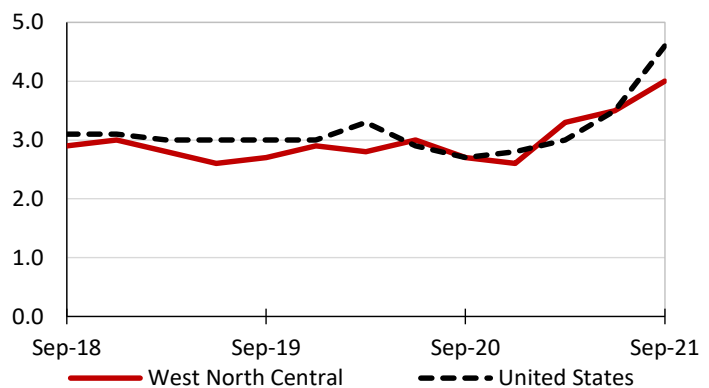
| Private industry, September 2021 | West North Central | United States |
|----------------------------------|--------------------|---------------|
| Total compensation | \$33.31 | \$37.24 |
| Wages and salaries | 23.19 | 26.36 |
| Total benefits | 10.12 | 10.88 |
| Paid leave | 2.39 | 2.74 |
| Vacation | 1.23 | 1.40 |
| Supplemental pay | 1.13 | 1.26 |
| Insurance | 3.01 | 2.80 |
| Retirement and savings | 1.05 | 1.28 |
| Legally required benefits | 2.54 | 2.80 |

(1) The states that compose the West North Central census division are: IA, KS, MN, MO, NE, ND, and SD.

Source: U.S. BLS, Employer Costs for Employee Compensation.

Over-the-year changes in wages and salaries

12-month percent changes in ECI



Source: U.S. BLS, Employment Cost Index.

