



For Release: Thursday, December 15, 2016

16-2329-NEW

NEW YORK–NEW JERSEY INFORMATION OFFICE: New York City, N.Y.

Technical information: (646) 264-3600 BLSinfoNY@bls.gov www.bls.gov/regions/new-york-new-jersey

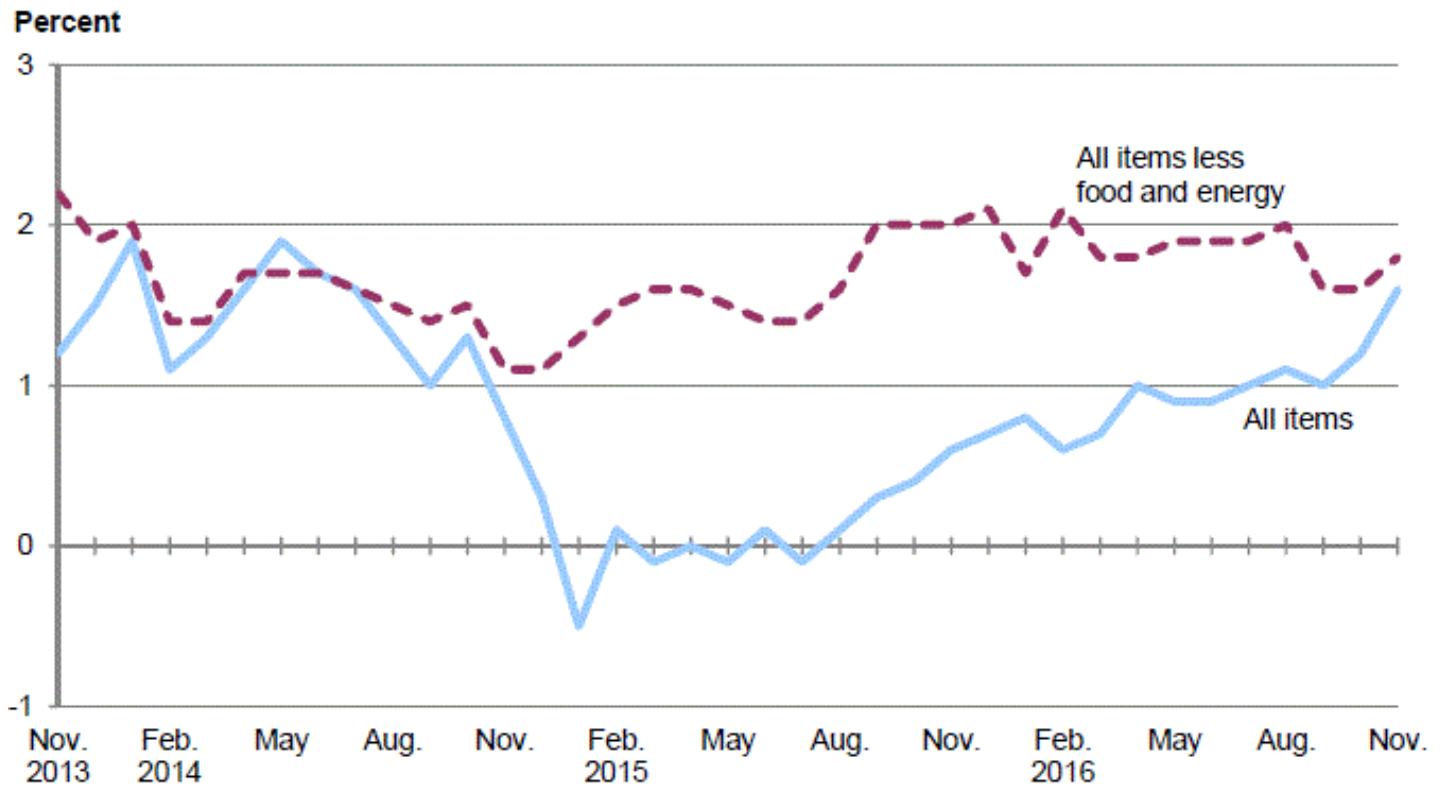
Media contact: (646) 264-3620

Consumer Price Index, New York-Northern New Jersey – November 2016 **Area prices up 0.2 percent over the month and 1.6 percent over the year**

Prices in the New York-Northern New Jersey-Long Island area, as measured by the Consumer Price Index for All Urban Consumers (CPI-U), edged up 0.2 percent in November after inching up 0.1 percent in October, the U.S. Bureau of Labor Statistics reported today. Chief Regional Economist Martin Kohli noted that higher prices for shelter and energy were partly offset by lower prices for apparel, often down in November. (Data in this report are not seasonally adjusted. Accordingly, month-to-month changes may reflect the impact of seasonal influences.)

Over the year, the CPI-U advanced 1.6 percent, the largest 12-month increase in 28 months. The index for all items less food and energy rose 1.8 percent. (See [table A](#) and [chart 1](#).) Higher prices for shelter drove the 12-month change in both indexes. (See [table 1](#).)

Chart 1. Over-the-year percent change in CPI-U, New York-Northern New Jersey-Long Island, November 2013–November 2016



Source: U.S. Bureau of Labor Statistics.

Food

The food index was unchanged over the month after ticking down 0.1 percent in October. A 0.2-percent increase in prices for food away from home was offset by a 0.1-percent decrease in prices for food at home. Groceries with lower November prices included ham; spices, seasonings, condiments, sauces; and sugar and artificial sweeteners.

For the year ended in November 2016, the food index was unchanged. Prices for food at home decreased 2.6 percent, enough to counterbalance a 3.5-percent rise in prices for food away from home.

Energy

The energy index rose 2.7 percent after dropping 1.4 percent in October. A 5.9-percent jump in gasoline prices coupled with a 0.6-percent increase in household energy contributed to the upturn. Within household energy, natural gas prices rose 3.0 percent following three months of falling prices. Electricity prices, on the other hand, edged down 0.2 percent.

From November 2015 to November 2016, energy prices rose 2.6 percent. Gasoline prices advanced 7.5 percent, but the increase was tempered by a 0.4-percent decrease in prices for household energy. Among household energy components, electricity declined 1.3 percent, but natural gas rose 2.8 percent.

All items less food and energy

The index for all items less food and energy was unchanged following a 0.2-percent increase in October. Shelter prices increased 0.4 percent in November. Within shelter, owners' equivalent rent increased 0.3 percent, and residential rent rose 0.2 percent. Prices increased 0.8 percent for recreation. These increases were offset by a seasonal decline in apparel prices (-4.8 percent) and price reductions for household furnishings and operations (-1.3 percent) and for new and used motor vehicles.

Over the year, the index for all items less food and energy rose 1.8 percent. Shelter prices advanced 3.2 percent, with increases in owners' equivalent rent (3.1 percent) and residential rent (2.7 percent). Other price increases included medical care (4.9 percent), recreation (2.0 percent), and other goods and services (1.6 percent). In contrast, prices for household furnishings and operations fell 4.4 percent, the largest 12-month drop since 1977, and apparel prices were down 2.0 percent.

CPI-W

Table A. New York-Northern New Jersey-Long Island CPI-U 1-month and 12-month percent changes (not seasonally adjusted)

Month	2011		2012		2013		2014		2015		2016	
	1-month	12-month	1-month	12-month	1-month	12-month	1-month	12-month	1-month	12-month	1-month	12-month
January.....	0.3	1.5	0.4	2.8	0.5	2.2	0.9	1.9	0.1	-0.5	0.2	0.8
February.....	0.5	2.1	0.4	2.6	0.6	2.4	-0.2	1.1	0.3	0.1	0.2	0.6
March.....	0.7	2.3	0.6	2.6	0.1	1.9	0.4	1.3	0.2	-0.1	0.2	0.7
April.....	0.4	2.5	0.2	2.4	-0.2	1.4	0.0	1.6	0.1	0.0	0.4	1.0
May.....	0.6	2.9	0.1	1.8	0.1	1.4	0.5	1.9	0.4	-0.1	0.3	0.9
June.....	0.2	3.2	-0.1	1.6	0.3	1.8	0.0	1.7	0.2	0.1	0.2 ^(r)	0.9 ^(r)
July.....	0.3	3.3	-0.2	1.1	0.2	2.1	0.1	1.6	-0.1	-0.1	-0.1	1.0
August.....	0.4	3.5	0.6	1.4	0.1	1.7	-0.2	1.3	0.1	0.1	0.2	1.1
September.....	0.2	3.8	0.4	1.6	0.3	1.6	0.0	1.0	0.2	0.3	0.2	1.0
October.....	-0.2	3.3	-0.1	1.7	-0.6	1.1	-0.2	1.3	-0.1	0.4	0.1	1.2
November.....	-0.3	3.0	0.0	2.0	0.1	1.2	-0.4	0.8	-0.2	0.6	0.2	1.6
December.....	-0.4	2.7	-0.3	2.1	0.0	1.5	-0.5	0.3	-0.4	0.7		

Footnotes:
(R) = revised.

In November, the Consumer Price Index for Urban Wage Earners and Clerical Workers (CPI-W) was 259.348, up 0.1 percent over the month. The CPI-W rose 1.6 percent over the year.

The December 2016 Consumer Price Index for New York-Northern New Jersey-Long Island is scheduled to be released Wednesday, January 18, 2017, at 8:30 a.m. (ET).

Technical Note

The Consumer Price Index (CPI) is a measure of the average change in prices over time in a fixed market basket of goods and services. The Bureau of Labor Statistics publishes CPIs for two population groups: (1) a CPI for All Urban Consumers (CPI-U) which covers approximately 89 percent of the total population and (2) a CPI for Urban Wage Earners and Clerical Workers (CPI-W) which covers approximately 28 percent of the total population. The CPI-U includes, in addition to wage earners and clerical workers, groups such as professional, managerial, and technical workers, the self-employed, short-term workers, the unemployed, and retirees and others not in the labor force.

The CPI is based on prices of food, clothing, shelter, and fuels, transportation fares, charges for doctors' and dentists' services, drugs, and the other goods and services that people buy for day-to-day living. Each month, prices are collected in 87 urban areas across the country from about 6,000 housing units and approximately 24,000 retail establishments--department stores, supermarkets, hospitals, filling stations, and other types of stores and service establishments. All taxes directly associated with the purchase and use of items are included in the index.

The index measures price changes from a designated reference date (1982-84) that equals 100.0. An increase of 16.5 percent, for example, is shown as 116.5. This change can also be expressed in dollars as follows: the price of a base period "market basket" of goods and services in the CPI has risen from \$10 in 1982-84 to \$11.65. For further details see the CPI home page on the Internet at www.bls.gov/cpi and the BLS Handbook of Methods, Chapter 17, The Consumer Price Index, available on the Internet at www.bls.gov/opub/hom/pdf/homch17.pdf.

In calculating the index, price changes for the various items in each location are averaged together with weights that represent their importance in the spending of the appropriate population group. Local data are then combined to obtain a U.S. city average. Because the sample size of a local area is smaller, the local area index is subject to substantially more sampling and other measurement error than the national index. In addition, local indexes are not adjusted for seasonal influences. As a result, local area indexes show greater volatility than the national index, although their long-term trends are quite similar. **NOTE: Area indexes do not measure differences in the level of prices between cities; they only measure the average change in prices for each area since the base period.**

The New York-Northern New Jersey-Long Island, N.Y.-N.J.-Conn.-Pa. consolidated area covered in this release is comprised of Bronx, Dutchess, Kings, Nassau, New York, Orange, Putnam, Queens, Richmond, Rockland, Suffolk, and Westchester Counties in New York State; Bergen, Essex, Hudson, Hunterdon, Mercer, Middlesex, Monmouth, Morris, Ocean, Passaic, Somerset, Sussex, Union, and Warren Counties in New Jersey; Fairfield County and parts of Litchfield, Middlesex, and New Haven Counties in Connecticut; and Pike County in Pennsylvania.

Information in this release will be made available to sensory impaired individuals upon request. Voice phone: (202) 691-5200; Federal Relay Service: (800) 877-8339.

Table 1. Consumer Price Index for All Urban Consumers (CPI-U): Indexes and percent changes for selected periods, New York-Northern N.J.-Long Island, NY-NJ-CT-PA (1982-84=100 unless otherwise noted)(not seasonally adjusted)

Item and Group	Indexes			Percent change from-		
	Sept. 2016	Oct. 2016	Nov. 2016	Nov. 2015	Sept. 2016	Oct. 2016
Expenditure category						
All items.....	264.602	264.738	265.203	1.6	0.2	0.2
All items (1967=100).....	764.929	765.320	766.664			
Food and beverages.....	257.292	257.031	257.208	0.0	0.0	0.1
Food.....	257.145	256.847	256.951	0.0	-0.1	0.0
Food at home.....	249.354	248.197	248.012	-2.6	-0.5	-0.1
Food away from home.....	275.078	276.025	276.552	3.5	0.5	0.2
Alcoholic beverages.....	254.879	255.126	256.281	1.1	0.6	0.5
Housing.....	286.331	286.510	287.452	2.4	0.4	0.3
Shelter.....	361.800	363.532	365.114	3.2	0.9	0.4
Rent of primary residence(1).....	373.441	374.891	375.539	2.7	0.6	0.2
Owners' equivalent rent of residences(1)(2) ..	368.899	370.047	371.287	3.1	0.6	0.3
Owners' equivalent rent of primary residence(1)(2).....	368.429	369.572	370.812	3.1	0.6	0.3
Fuels and utilities.....	182.065	176.855	177.883	0.0	-2.3	0.6
Household energy.....	173.701	167.869	168.910	-0.4	-2.8	0.6
Energy services(1).....	170.079	162.281	163.566	0.1	-3.8	0.8
Electricity(1).....	184.464	173.568	173.266	-1.3	-6.1	-0.2
Utility (piped) gas service(1).....	135.627	133.654	137.633	2.8	1.5	3.0
Household furnishings and operations.....	111.190	109.824	108.437	-4.4	-2.5	-1.3
Apparel.....	133.232	130.743	124.428	-2.0	-6.6	-4.8
Transportation.....	206.707	208.662	211.250	0.7	2.2	1.2
Private transportation.....	192.939	194.247	196.746	1.4	2.0	1.3
Motor fuel.....	173.813	177.044	187.493	7.4	7.9	5.9
Gasoline (all types).....	173.077	176.296	186.767	7.5	7.9	5.9
Gasoline, unleaded regular(3).....	170.836	174.233	184.836	7.9	8.2	6.1
Gasoline, unleaded midgrade(3)(4).....	187.165	189.260	198.637	5.2	6.1	5.0
Gasoline, unleaded premium(3).....	190.183	192.314	202.140	5.1	6.3	5.1
Medical care.....	471.327	470.983	470.574	4.9	-0.2	-0.1
Recreation(5).....	119.874	120.142	121.092	2.0	1.0	0.8
Education and communication(5).....	143.625	143.287	143.374	-0.2	-0.2	0.1
Other goods and services.....	415.612	416.035	415.073	1.6	-0.1	-0.2
Commodity and service group						
All items.....	264.602	264.738	265.203	1.6	0.2	0.2
Commodities.....	186.182	185.603	184.900	-0.5	-0.7	-0.4
Commodities less food and beverages.....	142.629	141.936	140.865	-1.0	-1.2	-0.8
Nondurables less food and beverages.....	178.997	178.577	177.426	0.7	-0.9	-0.6
Durables.....	95.947	95.037	94.128	-4.1	-1.9	-1.0
Services.....	331.028	331.709	333.074	2.5	0.6	0.4
Special aggregate indexes						
All items less medical care.....	255.624	255.779	256.279	1.4	0.3	0.2

Note: See footnotes at end of table.

Table 1. Consumer Price Index for All Urban Consumers (CPI-U): Indexes and percent changes for selected periods, New York-Northern N.J.-Long Island, NY-NJ-CT-PA (1982-84=100 unless otherwise noted)(not seasonally adjusted) - Continued

Item and Group	Indexes			Percent change from-		
	Sept. 2016	Oct. 2016	Nov. 2016	Nov. 2015	Sept. 2016	Oct. 2016
All items less shelter.....	226.127	225.612	225.624	0.5	-0.2	0.0
Commodities less food.....	146.876	146.208	145.202	-0.9	-1.1	-0.7
Nondurables.....	219.663	219.313	218.781	0.3	-0.4	-0.2
Nondurables less food.....	183.620	183.239	182.221	0.7	-0.8	-0.6
Services less rent of shelter(2).....	308.334	307.882	309.062	1.6	0.2	0.4
Services less medical care services.....	319.956	320.681	322.118	2.3	0.7	0.4
Energy.....	176.174	173.699	178.323	2.6	1.2	2.7
All items less energy.....	274.996	275.377	275.456	1.6	0.2	0.0
All items less food and energy.....	279.961	280.459	280.534	1.8	0.2	0.0

Footnotes(1) This index series was calculated using a Laspeyres estimator. All other item stratum index series were calculated using a geometric means estimator.

(2) Index is on a December 1982=100 base.

(3) Special index based on a substantially smaller sample.

(4) Indexes on a December 1993=100 base.

(5) Indexes on a December 1997=100 base.

Note: Index applies to a month as a whole, not to any specific date.

The New York-Northern New Jersey-Long Island, NY-NJ-CT-PA consolidated area comprises the five boroughs of New York City, Nassau, Suffolk, Westchester, Rockland, Putnam, Dutchess, and Orange Counties in New York State; Bergen, Essex, Hudson, Hunterdon, Mercer, Monmouth, Middlesex, Morris, Ocean, Passaic, Somerset, Sussex, Union, and Warren Counties in New Jersey; Fairfield County and parts of Litchfield, New Haven, and Middlesex Counties in Connecticut; and Pike County in Pennsylvania.