

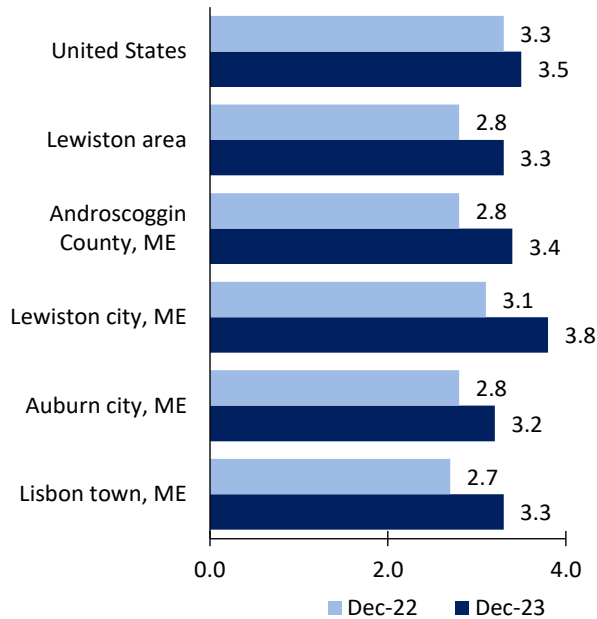
# Lewiston Area Economic Summary

Updated February 07, 2024

This summary presents a sampling of economic information for the area; supplemental data are provided for regions and the nation. Subjects include **unemployment, employment, wages, prices, spending, and benefits**. All data are not seasonally adjusted and some may be subject to revision. Area definitions may differ by subject. For more area summaries and geographic definitions, see [www.bls.gov/regions/economic-summaries.htm](http://www.bls.gov/regions/economic-summaries.htm).

## Unemployment rates for the nation and selected areas

### Unemployment rates

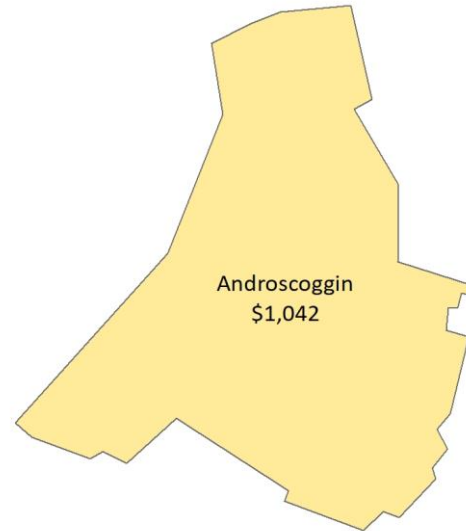


Source: U.S. BLS, Local Area Unemployment Statistics.

## Average weekly wages for all industries by county

### Lewiston area, second quarter 2023

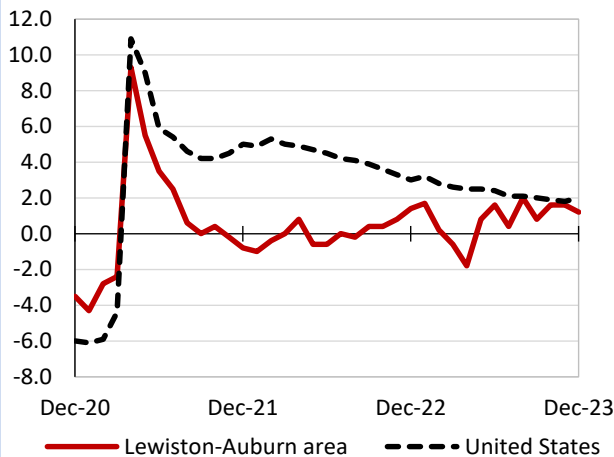
(U.S. = \$1,332; Area = \$1,042)



Source: U.S. BLS, Quarterly Census of Employment and Wages.

## Over-the-year changes in employment on nonfarm payrolls and employment by major industry sector

### 12-month percent changes in employment



Source: U.S. BLS, Current Employment Statistics.

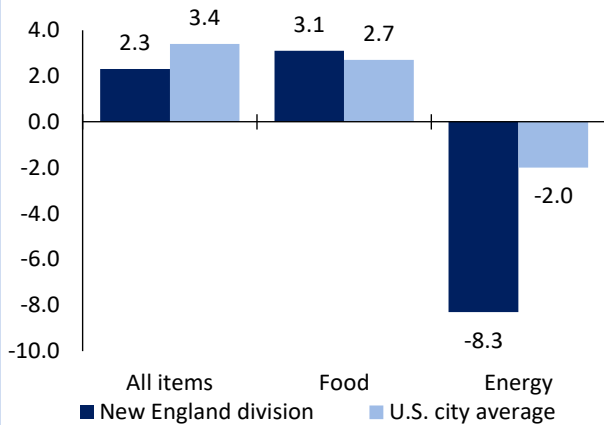
Lewiston area employment (number in thousands)	Dec. 2023	Change from Dec. 2022 to Dec. 2023	
		Number	Percent
Total nonfarm	50.8	0.6	1.2
Mining, logging, and construction	2.8	-0.1	-3.4
Manufacturing	5.3	0.0	0.0
Trade, transportation, and utilities	10.4	-0.1	-1.0
Information	0.3	0.0	0.0
Financial activities	2.2	-0.1	-4.3
Professional and business services	5.7	0.0	0.0
Education and health services	12.6	0.6	5.0
Leisure and hospitality	3.7	-0.1	-2.6
Other services	1.5	0.0	0.0
Government	6.3	0.4	6.8

Source: U.S. BLS, Current Employment Statistics.



Over-the-year change in the prices paid by urban consumers for selected categories

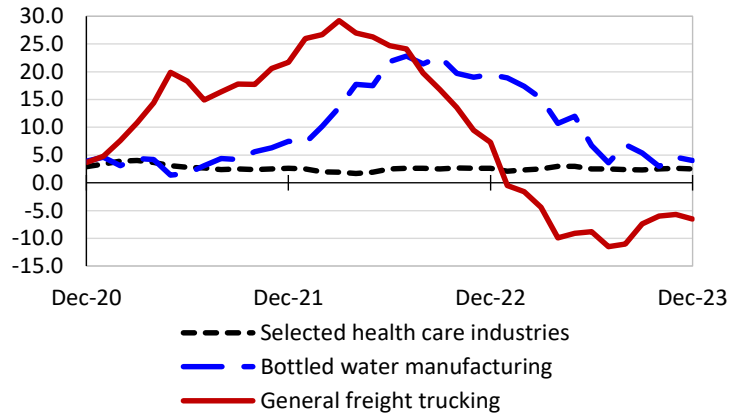
12-month percent change in CPI-U, December 2023



Source: U.S. BLS, Consumer Price Index.

Over-the-year changes in the selling prices received by producers for selected industries nationwide

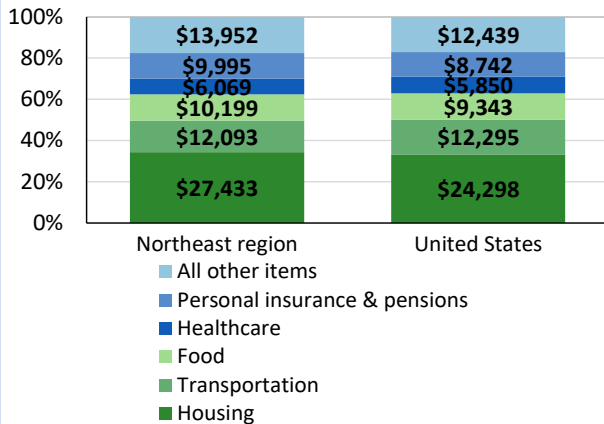
12-month percent changes in PPI



Source: U.S. BLS, Producer Price Index.

Average annual spending and percent distribution for selected categories

Average annual expenditures, United States and Northeast region, 2022



Source: U.S. BLS, Consumer Expenditure Survey.

Average hourly wages for selected occupations

Occupation	Lewiston area	United States
All occupations	\$25.89	\$29.76
Registered nurses	36.77	42.80
Heavy and tractor-trailer truck drivers	23.79	25.52
Maintenance and repair workers, general	23.53	22.66
Social and human service assistants	19.68	20.00
Stockers and order fillers	19.14	17.09
Retail salespersons	17.69	16.70

Source: U.S. BLS, Occupational Employment and Wage Statistics, May 2022.

Employer costs per hour worked for wages and selected employee benefits by geographic division

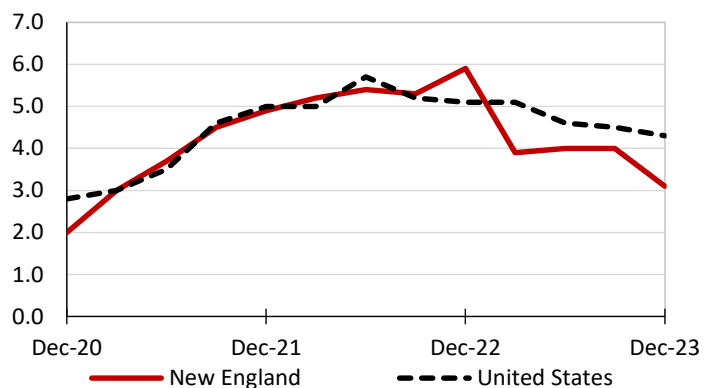
Private industry, September 2023	New England	United States
Total compensation	\$47.97	\$41.53
Wages and salaries	32.97	29.34
Total benefits	15.00	12.19
Paid leave	3.88	3.09
Vacation	1.99	1.59
Supplemental pay	2.33	1.55
Insurance	3.69	3.04
Retirement and savings	1.64	1.41
Legally required benefits	3.47	3.11

(1) The states that compose the New England census division are: CT, ME, MA, NH, RI, and VT.

Source: U.S. BLS, Employer Costs for Employee Compensation.

Over-the-year changes in wages and salaries

12-month percent changes in ECI



Source: U.S. BLS, Employment Cost Index.

