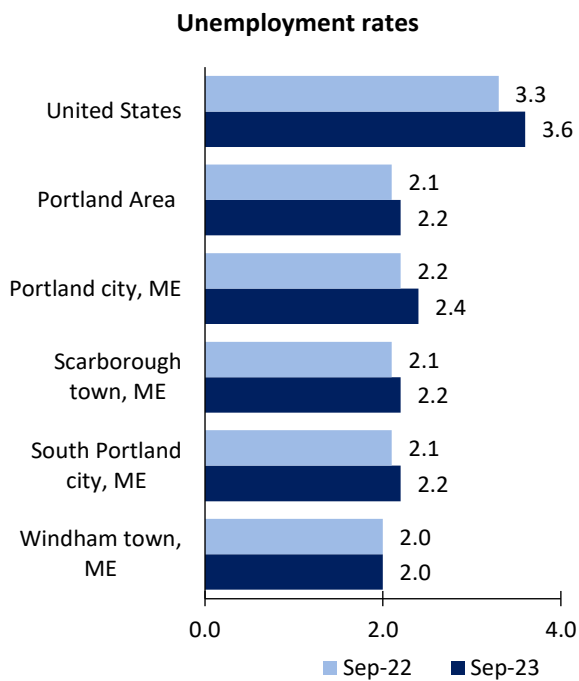


Portland, ME, Area Economic Summary

Updated November 09, 2023

This summary presents a sampling of economic information for the area; supplemental data are provided for regions and the nation. Subjects include **unemployment, employment, wages, prices, spending, and benefits**. All data are not seasonally adjusted and some may be subject to revision. Area definitions may differ by subject. For more area summaries and geographic definitions, see www.bls.gov/regions/economic-summaries.htm.

Unemployment rates for the nation and selected areas

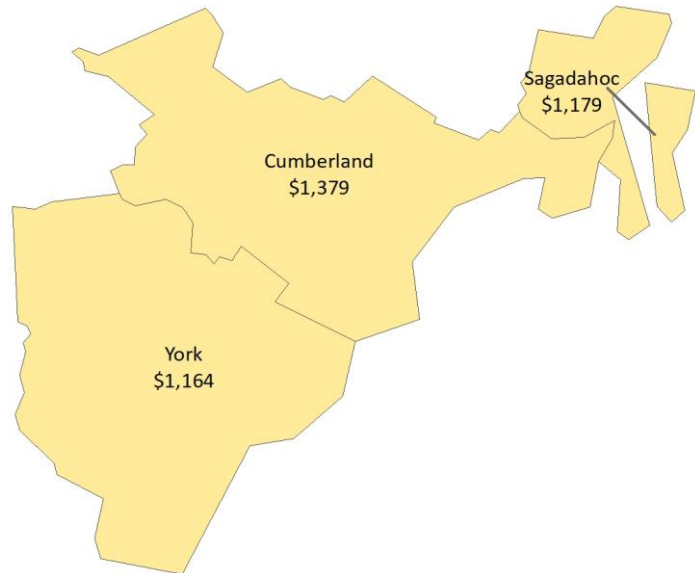


Source: U.S. BLS, Local Area Unemployment Statistics.

Average weekly wages for all industries by county

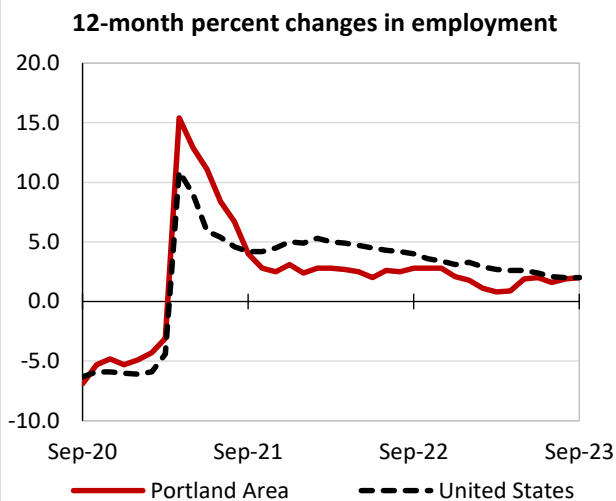
Portland Area, first quarter 2023

(U.S. = \$1,465; Area = \$1,310)



Source: U.S. BLS, Quarterly Census of Employment and Wages.

Over-the-year changes in employment on nonfarm payrolls and employment by major industry sector



Source: U.S. BLS, Current Employment Statistics.

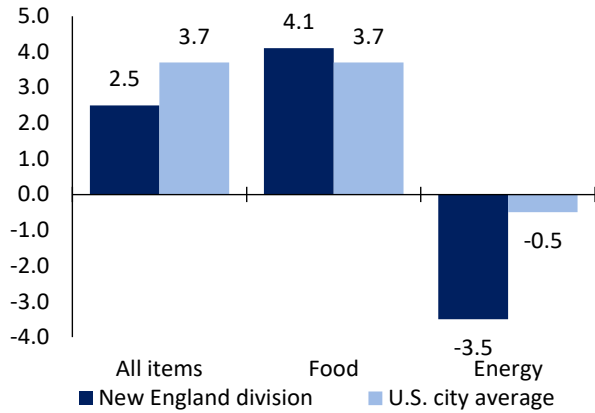
| Portland Area employment (number in thousands) | Sep. 2023 | Change from Sep. 2022 to Sep. 2023 | |
|--|-----------|------------------------------------|---------|
| | | Number | Percent |
| Total nonfarm | 219.8 | 4.3 | 2.0 |
| Mining, logging, and construction | 11.6 | 0.4 | 3.6 |
| Manufacturing | 15.4 | -0.1 | -0.6 |
| Trade, transportation, and utilities | 37.9 | 0.1 | 0.3 |
| Information | 3.2 | -0.1 | -3.0 |
| Financial activities | 16.2 | -0.7 | -4.1 |
| Professional and business services | 33.8 | 2.2 | 7.0 |
| Education and health services | 46.0 | 2.3 | 5.3 |
| Leisure and hospitality | 24.3 | -0.2 | -0.8 |
| Other services | 7.8 | 0.1 | 1.3 |
| Government | 23.6 | 0.3 | 1.3 |

Source: U.S. BLS, Current Employment Statistics.



Over-the-year change in the prices paid by urban consumers for selected categories

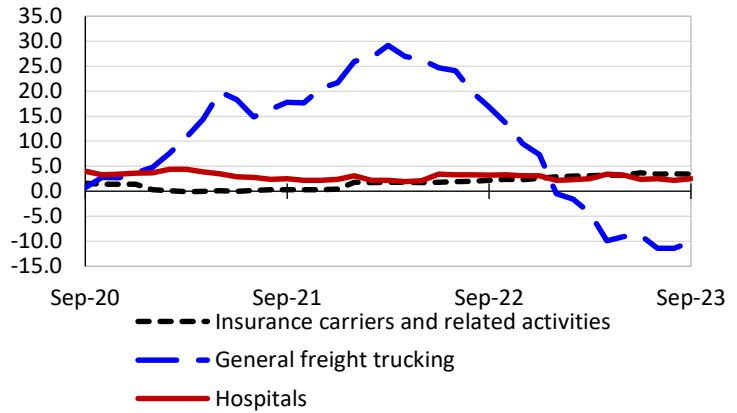
12-month percent change in CPI-U, September 2023



Source: U.S. BLS, Consumer Price Index.

Over-the-year changes in the selling prices received by producers for selected industries nationwide

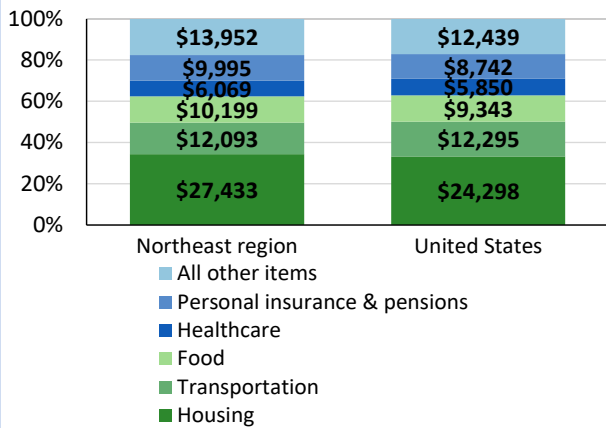
12-month percent changes in PPI



Source: U.S. BLS, Producer Price Index.

Average annual spending and percent distribution for selected categories

Average annual expenditures, United States and Northeast region, 2022



Source: U.S. BLS, Consumer Expenditure Survey.

Average hourly wages for selected occupations

| Occupation | Portland area | United States |
|---------------------------------|---------------|---------------|
| All occupations | \$28.81 | \$29.76 |
| General and operations managers | 55.24 | 59.07 |
| Waiters and waitresses | 20.69 | 15.87 |
| Office clerks, general | 20.03 | 19.78 |
| Nursing assistants | 19.17 | 17.41 |
| Maids and housekeeping cleaners | 16.36 | 15.35 |
| Cashiers | 15.41 | 13.81 |

Source: U.S. BLS, Occupational Employment and Wage Statistics, May 2022.

Employer costs per hour worked for wages and selected employee benefits by geographic division

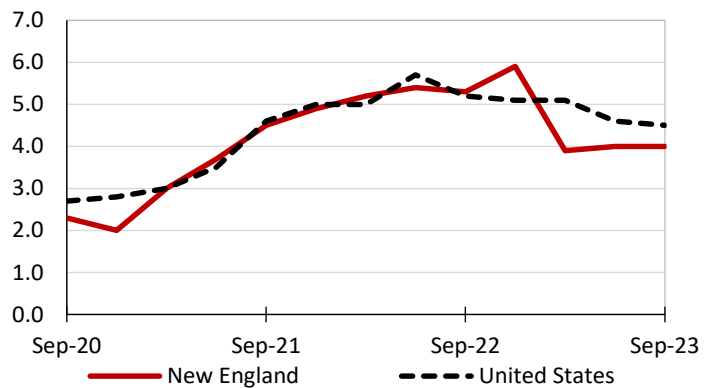
| Private industry, June 2023 | New England (1) | United States |
|-----------------------------|-----------------|---------------|
| Total compensation | \$47.14 | \$41.03 |
| Wages and salaries | 32.39 | 28.97 |
| Total benefits | 14.75 | 12.06 |
| Paid leave | 3.78 | 3.05 |
| Vacation | 1.94 | 1.56 |
| Supplemental pay | 2.30 | 1.53 |
| Insurance | 3.65 | 3.02 |
| Retirement and savings | 1.60 | 1.39 |
| Legally required benefits | 3.41 | 3.08 |

(1) The states that compose the New England census division are: CT, ME, MA, NH, RI, and VT.

Source: U.S. BLS, Employer Costs for Employee Compensation.

Over-the-year changes in wages and salaries

12-month percent changes in ECI



Source: U.S. BLS, Employment Cost Index.

