

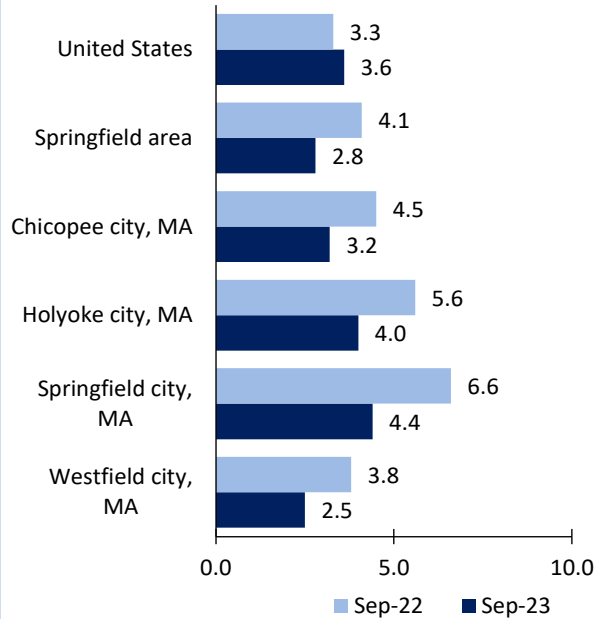
Springfield, MA-CT, Area Economic Summary

Updated November 09, 2023

This summary presents a sampling of economic information for the area; supplemental data are provided for regions and the nation. Subjects include **unemployment, employment, wages, prices, spending, and benefits**. All data are not seasonally adjusted and some may be subject to revision. Area definitions may differ by subject. For more area summaries and geographic definitions, see www.bls.gov/regions/economic-summaries.htm.

Unemployment rates for the nation and selected areas

Unemployment rates

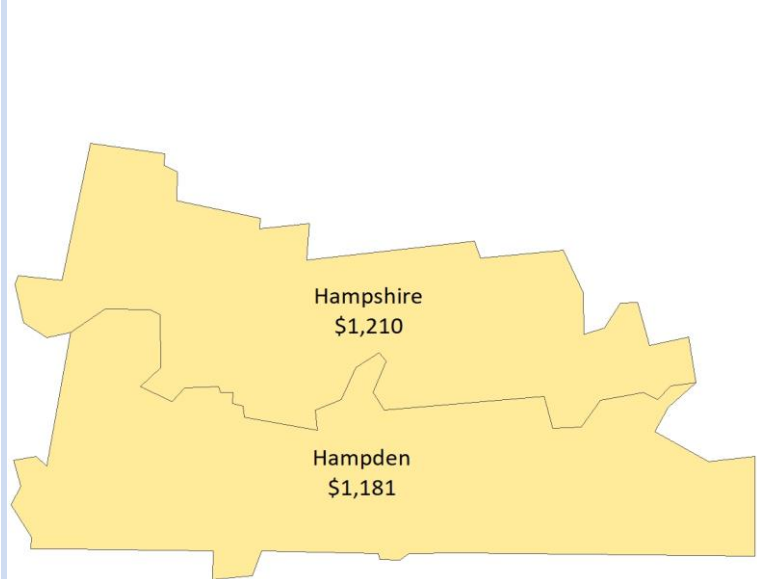


Source: U.S. BLS, Local Area Unemployment Statistics.

Average weekly wages for all industries by county

Springfield area, first quarter 2023

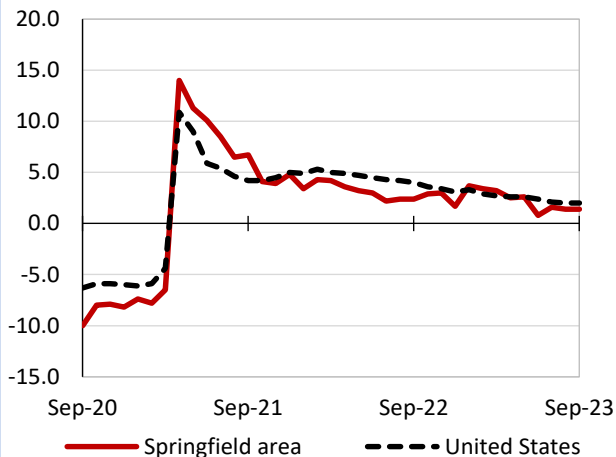
(U.S. = \$1,465; Area = \$1,188)



Source: U.S. BLS, Quarterly Census of Employment and Wages.

Over-the-year changes in employment on nonfarm payrolls and employment by major industry sector

12-month percent changes in employment



Source: U.S. BLS, Current Employment Statistics.

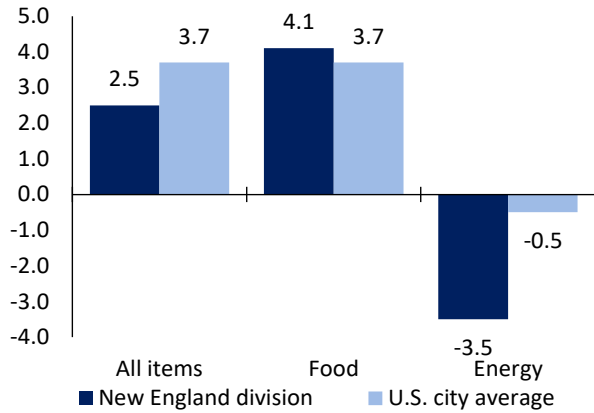
Springfield area employment (number in thousands)	Sep. 2023	Change from Sep. 2022 to Sep. 2023	
		Number	Percent
Total nonfarm	341.7	4.8	1.4
Mining, logging, and construction	13.2	0.4	3.1
Manufacturing	28.5	-0.3	-1.0
Trade, transportation, and utilities	59.2	0.6	1.0
Information	2.9	0.0	0.0
Financial activities	14.3	0.0	0.0
Professional and business services	25.6	0.4	1.6
Education and health services	88.3	3.0	3.5
Leisure and hospitality	34.8	2.9	9.1
Other services	12.9	0.4	3.2
Government	62.0	-2.6	-4.0

Source: U.S. BLS, Current Employment Statistics.



Over-the-year change in the prices paid by urban consumers for selected categories

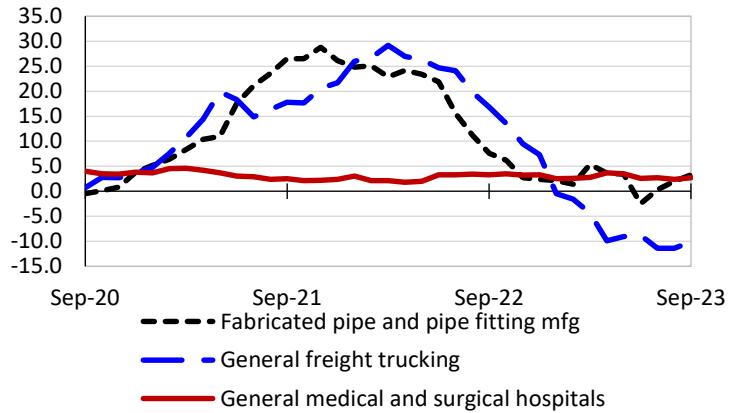
12-month percent change in CPI-U, September 2023



Source: U.S. BLS, Consumer Price Index.

Over-the-year changes in the selling prices received by producers for selected industries nationwide

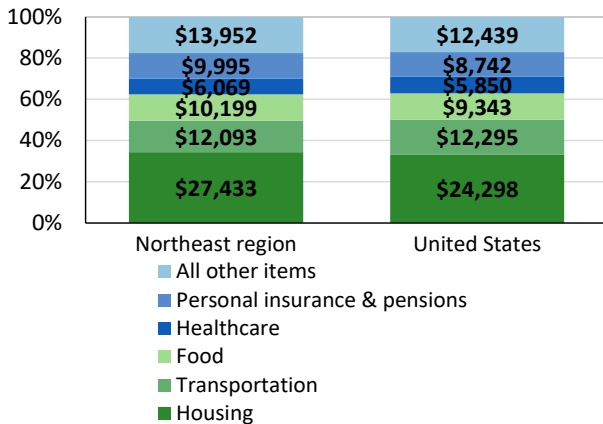
12-month percent changes in PPI



Source: U.S. BLS, Producer Price Index.

Average annual spending and percent distribution for selected categories

Average annual expenditures, United States and Northeast region, 2022



Source: U.S. BLS, Consumer Expenditure Survey.

Average hourly wages for selected occupations

Occupation	Springfield area	United States
All occupations	\$29.50	\$29.76
General and operations managers	57.97	59.07
Bus drivers, transit and intercity	23.47	25.92
Customer service representatives	21.19	19.80
Waiters and waitresses	18.32	15.87
Retail salespersons	17.78	16.70
Cashiers	15.51	13.81

Source: U.S. BLS, Occupational Employment and Wage Statistics, May 2022.

Employer costs per hour worked for wages and selected employee benefits by geographic division

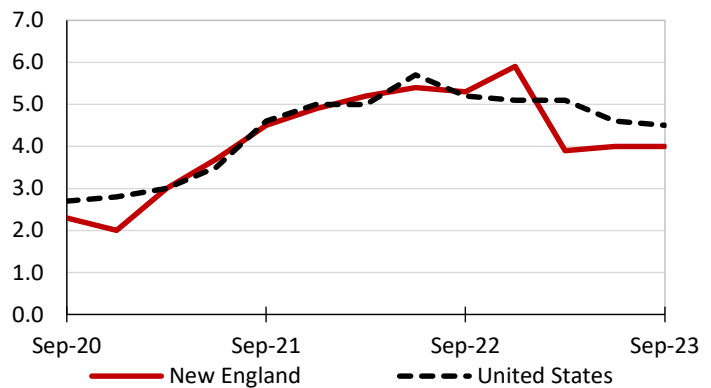
Private industry, June 2023	New England (1)	United States
Total compensation	\$47.14	\$41.03
Wages and salaries	32.39	28.97
Total benefits	14.75	12.06
Paid leave	3.78	3.05
Vacation	1.94	1.56
Supplemental pay	2.30	1.53
Insurance	3.65	3.02
Retirement and savings	1.60	1.39
Legally required benefits	3.41	3.08

(1) The states that compose the New England census division are: CT, ME, MA, NH, RI, and VT.

Source: U.S. BLS, Employer Costs for Employee Compensation.

Over-the-year changes in wages and salaries

12-month percent changes in ECI



Source: U.S. BLS, Employment Cost Index.

