



For Release: Tuesday, May 05, 2020

20-835-ATL

SOUTHEAST INFORMATION OFFICE: Atlanta, Ga.

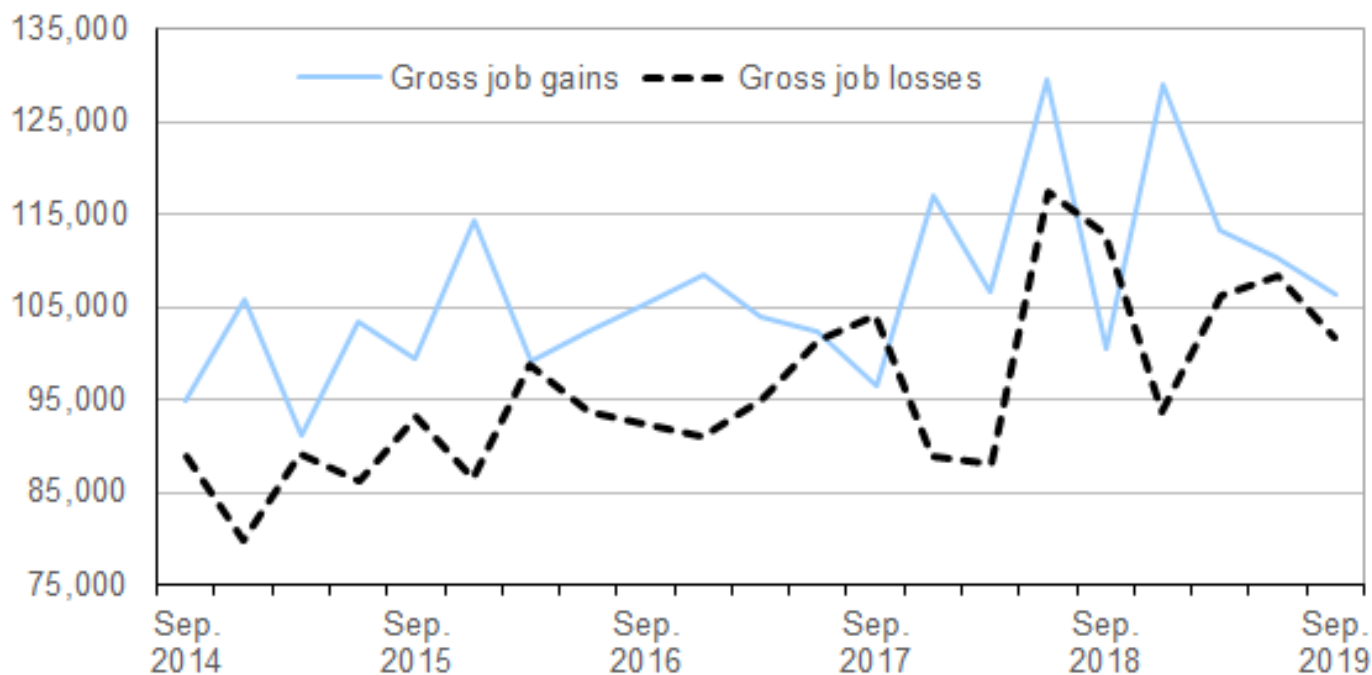
Technical information: (404) 893-4222 BLSInfoAtlanta@bls.gov [www.bls.gov/regions/southeast](http://www.bls.gov/regions/southeast)

Media contact: (404) 893-4220

## Business Employment Dynamics in South Carolina – Third Quarter 2019

From June 2019 to September 2019, **gross job gains** from opening and expanding private-sector establishments in South Carolina were 106,317, while **gross job losses** from closing and contracting private-sector establishments were 101,624, the U.S. Bureau of Labor Statistics reported today. Regional Commissioner Janet S. Rankin noted that the difference between the number of gross job gains and the number of gross job losses yielded a **net employment gain** of 4,693 jobs in the private sector during the third quarter of 2019. During the previous quarter, gross job gains exceeded gross job losses by 1,941. (See [chart 1.](#))

**Chart 1. Private sector gross job gains and losses in South Carolina, September 2014–September 2019, seasonally adjusted**



Source: U.S. Bureau of Labor Statistics.

The change in the number of jobs over time is the net result of increases and decreases in employment that occur at all private businesses in the economy. Business Employment Dynamics (BED) statistics track these changes in employment at private-sector establishments from the third month of one quarter to the third month of the next. The difference between the number of gross job gains and the number of gross job losses is the net change in employment. (See [Technical Note.](#))

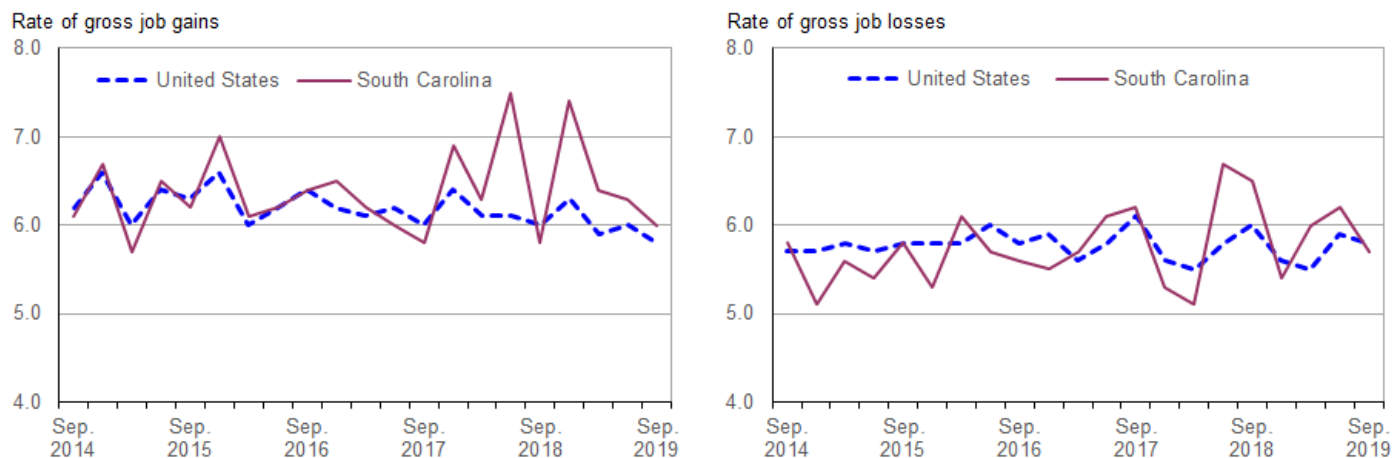
## Gross job gains

In the third quarter of 2019, gross job gains represented 6.0 percent of private-sector employment in South Carolina; nationally, gross job gains accounted for 5.8 percent of private-sector employment. (See [chart 2](#).) Gross job gains are the sum of increases in employment due to expansions at existing establishments and the addition of new jobs at opening establishments. In South Carolina, gross job gains at **expanding** establishments totaled 88,482 in the third quarter of 2019, a decrease of 2,516 jobs compared to the previous quarter. (See [table 1](#).) **Opening** establishments accounted for 17,835 jobs gained in the third quarter of 2019, a decrease of 1,556 jobs from the previous quarter.

## Gross job losses

In the third quarter of 2019, gross job losses represented 5.7 percent of private-sector employment in South Carolina; nationally, gross job losses accounted for 5.8 percent of private-sector employment. (See [chart 2](#).) Gross job losses are the result of contractions in employment at existing establishments and the loss of jobs at closing establishments. In South Carolina, **contracting** establishments lost 89,059 jobs in the third quarter of 2019, a decrease of 5,567 jobs from the prior quarter. **Closing** establishments lost 12,565 jobs, a decrease of 1,257 jobs from the previous quarter.

Chart 2. Private sector gross job gains and losses as a percent of employment, United States and South Carolina, September 2014–September 2019, seasonally adjusted



Source: U.S. Bureau of Labor Statistics.

## Industries

Gross job gains exceeded gross job losses in 7 of the 11 industry sectors in South Carolina in the third quarter of 2019. Leisure and hospitality had the largest over-the-quarter net job increase, with a gain of 2,637 jobs. This was the result of 25,405 gross job gains and 22,768 gross job losses. The professional and business services industry and the other services industry had net job gains of 854 and 823, respectively. Information showed a net loss of 960 jobs, the largest loss of any sector in the state.

## For more information

The BED data series include gross job gains and gross job losses by industry subsector, for the 50 states, the District of Columbia, Puerto Rico, and the Virgin Islands, as well as gross job gains and gross job losses at the firm level by employer size class. BED data for the states have been included in [table 2](#) of this release. Additional information is available online at [www.bls.gov/bdm/](http://www.bls.gov/bdm/).

**The Business Employment Dynamics for Fourth Quarter 2019 are scheduled to be released on Wednesday, July 29, 2020.**

## Technical Note

The Business Employment Dynamics (BED) data are a product of a federal-state cooperative program known as Quarterly Census of Employment and Wages (QCEW). The BED data are compiled by the U.S. Bureau of Labor Statistics (BLS) from existing QCEW records. Most employers in the U.S. are required to file quarterly reports on the employment and wages of workers covered by unemployment insurance (UI) laws, and to pay quarterly UI taxes. The QCEW is based largely on quarterly UI reports which are sent by businesses to the State Workforce Agencies (SWAs). These UI reports are supplemented by two additional BLS data collections to render administrative data into economic statistics. Together these data comprise the QCEW and form the basis of the Bureau's establishment universe sampling frame.

In the BED program, the QCEW records are linked across quarters to provide a longitudinal history for each establishment. The linkage process allows the tracking of net employment changes at the establishment level, which in turn allows the estimation of jobs gained at opening and expanding units and jobs lost at closing and contracting units.

The change in the number of jobs over time is the net result of increases and decreases in employment that occur at all businesses in the economy. BED statistics track these changes in employment at private business establishments from the third month of one quarter to the third month of the next. Gross job gains are the sum of increases in employment from expansions at existing establishments and the addition of new jobs at opening establishments. Gross job losses are the result of contractions in employment at existing establishments and the loss of jobs at closing establishments. The difference between the number of gross jobs gained and the number of gross jobs lost is the net change in employment.

Gross job gains and gross job losses are expressed as rates by dividing their levels by the average of employment in the current and previous quarters. The rates are calculated for the components of gross job gains and gross job losses and then summed to form their respective totals. These rates can be added and subtracted just as their levels can. For instance, the difference between the gross job gains rate and the gross job losses rate is the net growth rate.

The formal definitions of employment changes are as follows:

*Openings.* These are either units with positive third month employment for the first time in the current quarter, with no links to the prior quarter, or with positive third month employment in the current quarter following zero employment in the previous quarter.

*Expansions.* These are units with positive employment in the third month in both the previous and current quarters, with a net increase in employment over this period.

*Closings.* These are either units with positive third month employment in the previous quarter, with no employment or zero employment reported in the current quarter.

*Contractions.* These are units with positive employment in the third month in both the previous and current quarters, with a net decrease in employment over this period.

The full Technical Note for the Business Employment Dynamics program, which includes information on coverage, concepts, and methodology, can be found in the current quarterly news release online at [www.bls.gov/news.release/cewbd.htm](http://www.bls.gov/news.release/cewbd.htm).

Information in this release will be made available to sensory impaired individuals upon request. Voice phone: (202) 691-5200; Federal Relay Service: (800) 877-8339.

**Table 1. Private sector gross job gains and losses by industry, South Carolina, seasonally adjusted**

Category	Gross job gains and job losses (3 months ended)					Gross job gains and job losses as a percent of employment (3 months ended)				
	Sept. 2018	Dec. 2018	Mar. 2019	June 2019	Sept. 2019	Sept. 2018	Dec. 2018	Mar. 2019	June 2019	Sept. 2019
<b>Total private <sup>(1)</sup></b>										
Gross job gains .....	100,477	128,913	113,237	110,389	106,317	5.8	7.4	6.4	6.3	6.0
At expanding establishments .....	84,736	107,474	93,539	90,998	88,482	4.9	6.2	5.3	5.2	5.0
At opening establishments .....	15,741	21,439	19,698	19,391	17,835	0.9	1.2	1.1	1.1	1.0
Gross job losses .....	112,911	93,825	106,262	108,448	101,624	6.5	5.4	6.0	6.2	5.7
At contracting establishments .....	97,437	78,518	89,889	94,626	89,059	5.6	4.5	5.1	5.4	5.0
At closing establishments .....	15,474	15,307	16,373	13,822	12,565	0.9	0.9	0.9	0.8	0.7
Net employment change <sup>(2)</sup> .....	-12,434	35,088	6,975	1,941	4,693	-0.7	2.0	0.4	0.1	0.3
<b>Construction</b>										
Gross job gains .....	7,142	8,402	7,951	7,924	7,869	6.9	8.1	7.6	7.5	7.4
At expanding establishments .....	5,804	6,665	6,495	6,641	6,166	5.6	6.4	6.2	6.3	5.8
At opening establishments .....	1,338	1,737	1,456	1,283	1,703	1.3	1.7	1.4	1.2	1.6
Gross job losses .....	8,464	7,996	8,104	7,392	7,502	8.1	7.7	7.7	7.0	7.0
At contracting establishments .....	7,110	6,848	6,648	5,973	6,558	6.8	6.6	6.3	5.7	6.1
At closing establishments .....	1,354	1,148	1,456	1,419	944	1.3	1.1	1.4	1.3	0.9
Net employment change <sup>(2)</sup> .....	-1,322	406	-153	532	367	-1.2	0.4	-0.1	0.5	0.4
<b>Manufacturing</b>										
Gross job gains .....	7,854	10,474	8,613	8,931	7,268	3.1	4.2	3.3	3.5	2.9
At expanding establishments .....	7,393	9,333	7,789	8,231	6,859	2.9	3.7	3.0	3.2	2.7
At opening establishments .....	461	1,141	824	700	409	0.2	0.5	0.3	0.3	0.2
Gross job losses .....	7,846	6,604	6,564	6,977	7,391	3.1	2.6	2.5	2.7	2.9
At contracting establishments .....	6,871	5,422	5,989	6,418	6,960	2.7	2.1	2.3	2.5	2.7
At closing establishments .....	975	1,182	575	559	431	0.4	0.5	0.2	0.2	0.2
Net employment change <sup>(2)</sup> .....	8	3,870	2,049	1,954	-123	0.0	1.6	0.8	0.8	0.0
<b>Wholesale trade</b>										
Gross job gains .....	3,090	3,834	3,727	3,429	3,359	4.3	5.3	5.2	4.7	4.5
At expanding establishments .....	2,735	3,109	2,964	2,911	2,824	3.8	4.3	4.1	4.0	3.8
At opening establishments .....	355	725	763	518	535	0.5	1.0	1.1	0.7	0.7
Gross job losses .....	3,417	3,070	3,147	3,029	3,390	4.7	4.3	4.3	4.1	4.6
At contracting establishments .....	2,829	2,366	2,500	2,521	2,878	3.9	3.3	3.4	3.4	3.9
At closing establishments .....	588	704	647	508	512	0.8	1.0	0.9	0.7	0.7
Net employment change <sup>(2)</sup> .....	-327	764	580	400	-31	-0.4	1.0	0.9	0.6	-0.1
<b>Retail trade</b>										
Gross job gains .....	14,691	15,344	16,558	15,094	14,687	5.9	6.1	6.5	5.9	5.8
At expanding establishments .....	12,523	13,224	14,418	13,285	12,804	5.0	5.3	5.7	5.2	5.1
At opening establishments .....	2,168	2,120	2,140	1,809	1,883	0.9	0.8	0.8	0.7	0.7
Gross job losses .....	17,656	13,644	14,566	15,828	15,385	7.1	5.5	5.8	6.3	6.1
At contracting establishments .....	15,492	11,981	13,160	13,880	13,501	6.2	4.8	5.2	5.5	5.4
At closing establishments .....	2,164	1,663	1,406	1,948	1,884	0.9	0.7	0.6	0.8	0.7
Net employment change <sup>(2)</sup> .....	-2,965	1,700	1,992	-734	-698	-1.2	0.6	0.7	-0.4	-0.3
<b>Transportation and warehousing</b>										
Gross job gains .....	3,333	6,327	4,071	3,720	3,569	5.0	9.3	5.9	5.3	5.1
At expanding establishments .....	3,009	5,742	3,544	3,076	3,073	4.5	8.4	5.1	4.4	4.4
At opening establishments .....	324	585	527	644	496	0.5	0.9	0.8	0.9	0.7
Gross job losses .....	3,869	3,414	4,816	3,172	2,993	5.8	5.0	7.0	4.6	4.3
At contracting establishments .....	3,472	2,979	4,349	2,704	2,729	5.2	4.4	6.3	3.9	3.9
At closing establishments .....	397	435	467	468	264	0.6	0.6	0.7	0.7	0.4
Net employment change <sup>(2)</sup> .....	-536	2,913	-745	548	576	-0.8	4.3	-1.1	0.7	0.8
<b>Information</b>										
Gross job gains .....	1,430	1,430	2,285	1,864	1,289	5.0	5.1	8.4	6.8	4.7
At expanding establishments .....	1,220	999	2,010	1,587	1,065	4.3	3.6	7.4	5.8	3.9
At opening establishments .....	210	431	275	277	224	0.7	1.5	1.0	1.0	0.8
Gross job losses .....	1,910	1,494	1,303	1,469	2,249	6.8	5.3	4.8	5.3	8.2

Note: See footnotes at end of table.

**Table 1. Private sector gross job gains and losses by industry, South Carolina, seasonally adjusted - Continued**

Category	Gross job gains and job losses (3 months ended)					Gross job gains and job losses as a percent of employment (3 months ended)				
	Sept. 2018	Dec. 2018	Mar. 2019	June 2019	Sept. 2019	Sept. 2018	Dec. 2018	Mar. 2019	June 2019	Sept. 2019
At contracting establishments .....	1,573	1,230	1,078	1,355	2,075	5.6	4.4	4.0	4.9	7.6
At closing establishments .....	337	264	225	114	174	1.2	0.9	0.8	0.4	0.6
Net employment change <sup>(2)</sup> .....	-480	-64	982	395	-960	-1.8	-0.2	3.6	1.5	-3.5
<b>Financial activities</b>										
Gross job gains .....	5,067	6,508	4,756	5,693	5,435	5.0	6.4	4.7	5.7	5.3
At expanding establishments .....	4,056	4,960	3,620	4,116	4,201	4.0	4.9	3.6	4.1	4.1
At opening establishments .....	1,011	1,548	1,136	1,577	1,234	1.0	1.5	1.1	1.6	1.2
Gross job losses .....	5,315	4,953	4,801	4,949	4,732	5.3	4.9	4.8	4.9	4.7
At contracting establishments .....	4,311	3,922	3,613	4,040	3,711	4.3	3.9	3.6	4.0	3.7
At closing establishments .....	1,004	1,031	1,188	909	1,021	1.0	1.0	1.2	0.9	1.0
Net employment change <sup>(2)</sup> .....	-248	1,555	-45	744	703	-0.3	1.5	-0.1	0.8	0.6
<b>Professional and business services</b>										
Gross job gains .....	19,765	28,141	21,050	22,285	21,432	6.8	9.5	7.0	7.5	7.2
At expanding establishments .....	16,696	23,808	17,218	18,237	17,950	5.7	8.0	5.7	6.1	6.0
At opening establishments .....	3,069	4,333	3,832	4,048	3,482	1.1	1.5	1.3	1.4	1.2
Gross job losses .....	21,500	18,535	23,623	23,237	20,578	7.4	6.3	7.9	7.8	6.9
At contracting establishments .....	18,406	15,284	20,034	20,684	17,660	6.3	5.2	6.7	6.9	5.9
At closing establishments .....	3,094	3,251	3,589	2,553	2,918	1.1	1.1	1.2	0.9	1.0
Net employment change <sup>(2)</sup> .....	-1,735	9,606	-2,573	-952	854	-0.6	3.2	-0.9	-0.3	0.3
<b>Education and health services</b>										
Gross job gains .....	10,566	12,407	14,915	12,021	10,322	4.5	5.2	6.2	5.1	4.3
At expanding establishments .....	9,092	10,027	11,527	10,201	8,902	3.9	4.2	4.8	4.3	3.7
At opening establishments .....	1,474	2,380	3,388	1,820	1,420	0.6	1.0	1.4	0.8	0.6
Gross job losses .....	10,102	10,761	11,368	10,789	10,100	4.3	4.6	4.7	4.5	4.2
At contracting establishments .....	8,815	8,687	9,101	9,429	8,616	3.8	3.7	3.8	3.9	3.6
At closing establishments .....	1,287	2,074	2,267	1,360	1,484	0.5	0.9	0.9	0.6	0.6
Net employment change <sup>(2)</sup> .....	464	1,646	3,547	1,232	222	0.2	0.6	1.5	0.6	0.1
<b>Leisure and hospitality</b>										
Gross job gains .....	22,778	29,601	23,395	24,199	25,405	8.8	11.2	8.7	9.0	9.5
At expanding establishments .....	18,418	24,524	19,435	18,583	20,271	7.1	9.3	7.2	6.9	7.6
At opening establishments .....	4,360	5,077	3,960	5,616	5,134	1.7	1.9	1.5	2.1	1.9
Gross job losses .....	27,216	18,308	22,476	25,769	22,768	10.5	7.0	8.3	9.6	8.5
At contracting establishments .....	23,865	15,754	18,919	22,707	20,591	9.2	6.0	7.0	8.5	7.7
At closing establishments .....	3,351	2,554	3,557	3,062	2,177	1.3	1.0	1.3	1.1	0.8
Net employment change <sup>(2)</sup> .....	-4,438	11,293	919	-1,570	2,637	-1.7	4.2	0.4	-0.6	1.0
<b>Other services <sup>(3)</sup></b>										
Gross job gains .....	3,357	4,465	4,043	3,916	4,094	6.7	9.0	8.1	7.7	8.0
At expanding establishments .....	2,544	3,417	3,102	2,989	3,015	5.1	6.9	6.2	5.9	5.9
At opening establishments .....	813	1,048	941	927	1,079	1.6	2.1	1.9	1.8	2.1
Gross job losses .....	4,065	3,468	3,551	3,542	3,271	8.2	7.0	7.1	7.0	6.4
At contracting establishments .....	3,281	2,810	2,752	2,826	2,616	6.6	5.7	5.5	5.6	5.1
At closing establishments .....	784	658	799	716	655	1.6	1.3	1.6	1.4	1.3
Net employment change <sup>(2)</sup> .....	-708	997	492	374	823	-1.5	2.0	1.0	0.7	1.6

Footnotes:

(1) Includes unclassified sector not shown separately.

(2) The net employment change is the difference between total gross job gains and total gross job losses. See the Technical Note for further information.

(3) Except public administration.

**Table 2. Private sector gross job gains and losses as a percent of total employment by state, seasonally adjusted**

Category	Gross job gains as a percent of employment (3 months ended)					Gross job losses as a percent of employment (3 months ended)				
	Sept. 2018	Dec. 2018	Mar. 2019	June 2019	Sept. 2019	Sept. 2018	Dec. 2018	Mar. 2019	June 2019	Sept. 2019
United States <sup>(1)</sup> .....	6.0	6.3	5.9	6.0	5.8	6.0	5.6	5.5	5.9	5.8
Alabama .....	6.0	6.3	6.0	5.8	5.9	5.9	5.3	5.5	6.0	5.9
Alaska .....	8.9	11.0	10.0	10.8	9.5	10.7	9.8	9.0	10.2	10.1
Arizona .....	6.6	6.2	5.6	5.7	6.4	5.1	5.1	5.5	5.7	4.8
Arkansas .....	6.1	5.9	5.2	5.0	5.5	5.6	5.0	5.1	5.7	5.5
California .....	6.5	6.9	6.3	6.6	6.3	6.2	5.9	6.2	6.4	6.1
Colorado .....	6.6	6.8	6.6	7.0	6.6	6.8	6.0	6.3	6.2	6.4
Connecticut .....	5.3	5.3	5.2	5.8	5.5	5.7	4.9	5.7	5.9	5.8
Delaware .....	5.7	6.6	6.4	6.0	6.1	6.5	5.6	5.5	6.3	6.2
District of Columbia .....	5.3	5.6	5.4	5.4	5.4	5.5	5.1	4.9	5.5	5.4
Florida .....	6.8	6.4	6.1	6.5	6.5	5.8	6.1	5.6	6.3	5.7
Georgia .....	6.7	6.3	6.8	6.2	6.2	6.1	5.8	5.7	6.4	6.1
Hawaii .....	5.1	5.8	5.4	4.7	5.5	5.4	5.1	5.9	6.1	5.3
Idaho .....	6.8	7.4	7.5	7.1	6.9	6.9	6.3	6.1	6.7	6.8
Illinois .....	5.5	5.5	5.2	5.6	4.9	5.8	5.6	5.1	5.3	5.6
Indiana .....	5.2	5.6	5.9	5.2	5.4	5.4	5.0	4.8	5.8	5.7
Iowa .....	5.3	5.8	5.1	5.8	5.3	5.7	5.3	5.4	5.6	5.6
Kansas .....	5.9	6.1	5.4	5.7	5.7	5.7	5.4	5.7	5.7	5.6
Kentucky .....	5.8	6.1	5.8	5.8	5.8	6.0	5.4	5.5	5.9	5.7
Louisiana .....	6.3	6.2	5.9	6.0	5.9	6.3	5.8	5.9	6.5	6.1
Maine .....	6.1	7.3	7.2	7.5	6.4	7.5	6.7	6.4	7.5	7.2
Maryland .....	6.3	6.8	6.4	6.3	6.2	6.6	6.4	5.7	6.4	6.6
Massachusetts .....	5.6	5.8	5.7	6.0	5.3	6.1	5.3	5.2	5.7	5.9
Michigan .....	5.0	5.6	5.1	5.5	5.1	6.2	5.2	4.6	5.8	6.0
Minnesota .....	5.5	5.7	5.2	5.8	5.2	5.7	5.4	5.1	5.5	5.8
Mississippi .....	5.9	6.5	5.7	5.8	5.5	5.9	5.3	6.2	6.0	5.8
Missouri .....	5.9	5.8	5.4	5.6	5.8	6.0	5.4	5.3	5.8	5.8
Montana .....	7.2	8.9	7.6	8.0	7.3	7.9	7.2	8.0	7.7	7.7
Nebraska .....	5.9	5.9	5.7	5.7	5.6	5.9	5.7	5.6	5.7	5.5
Nevada .....	6.7	6.6	6.0	5.9	6.0	5.7	5.5	5.4	6.0	5.7
New Hampshire .....	5.7	6.6	6.3	6.4	5.8	6.8	5.7	5.7	6.3	6.6
New Jersey .....	6.0	6.4	5.7	6.2	6.0	6.4	5.7	5.6	5.8	6.1
New Mexico .....	6.4	6.8	6.4	6.3	6.7	6.4	6.1	5.8	6.3	6.1
New York .....	6.1	6.3	6.0	6.0	5.8	6.4	5.7	5.3	5.9	5.9
North Carolina .....	5.7	6.7	6.3	6.1	5.7	6.4	5.3	5.1	5.7	5.9
North Dakota .....	6.6	6.8	7.1	6.7	6.6	6.6	6.2	6.4	6.7	7.1
Ohio .....	5.4	5.6	5.5	5.6	5.3	5.8	5.3	5.1	5.7	5.8
Oklahoma .....	6.7	6.5	5.8	5.9	6.3	6.1	6.1	5.8	6.2	6.1
Oregon .....	6.2	6.7	6.3	6.3	6.2	6.3	6.0	5.8	6.1	6.2
Pennsylvania .....	5.4	5.3	5.1	5.2	5.2	5.2	4.8	4.8	5.3	5.2
Rhode Island .....	6.2	6.4	5.8	6.4	5.8	6.4	5.7	5.6	6.7	6.2
South Carolina .....	5.8	7.4	6.4	6.3	6.0	6.5	5.4	6.0	6.2	5.7
South Dakota .....	6.0	6.3	5.7	6.2	5.8	5.7	5.8	6.4	6.0	6.0
Tennessee .....	5.8	5.8	5.4	5.5	5.5	5.3	4.9	4.8	5.0	5.1
Texas .....	6.0	6.2	5.5	5.7	5.8	5.4	5.2	5.2	5.3	5.2
Utah .....	7.3	6.9	7.3	6.9	6.8	6.4	6.2	6.2	6.5	6.2
Vermont .....	6.9	7.4	6.7	6.9	6.3	7.6	6.8	6.3	7.1	7.6
Virginia .....	5.7	6.3	6.4	6.1	5.2	6.3	5.6	5.5	5.9	6.0
Washington .....	6.2	6.4	6.2	6.6	6.0	6.5	5.6	5.6	5.7	6.0
West Virginia .....	7.0	6.3	6.0	6.2	5.8	6.4	6.5	6.6	6.5	6.7
Wisconsin .....	5.1	5.4	5.1	5.5	4.8	5.9	5.0	4.8	5.3	5.8
Wyoming .....	8.3	10.0	8.6	8.5	8.5	8.4	7.8	7.8	9.6	8.7
Puerto Rico .....	7.2	6.0	7.1	6.4	6.1	5.8	6.8	5.1	5.8	5.4
Virgin Islands .....	12.8	7.9	11.9	8.8	11.2	5.9	7.1	7.4	6.1	6.6

Note: See footnotes at end of table.

Footnotes

(1) Totals for the United States do not include data for Puerto Rico or the Virgin Islands.