



For Release: Tuesday, May 19, 2015

15-620-DAL

SOUTHWEST INFORMATION OFFICE: Dallas, Texas

Technical information: (972) 850-4800 BLSInfoDallas@bls.gov www.bls.gov/regions/southwest

Media contact: (972) 850-4800

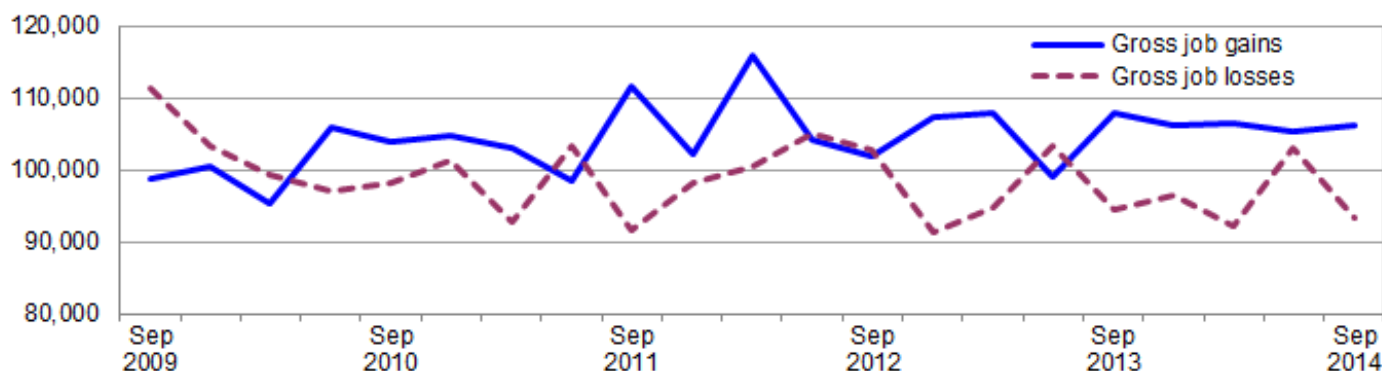
Business Employment Dynamics in Louisiana – Third Quarter 2014

From June 2014 to September 2014 gross job gains in private sector establishments in Louisiana totaled 106,145, while gross job losses numbered 93,279, the U.S. Bureau of Labor Statistics reported today. Regional Commissioner Stanley W. Suchman noted that gross job gains exceeded gross job losses by 12,866. During the previous quarter, gross job gains exceeded gross job losses by 2,391.

The change in the number of jobs over time is the net result of increases and decreases in employment that occur at all businesses in the economy. Business Employment Dynamics (BED) statistics track these changes in employment at private business establishments from the third month of one quarter to the third month of the next. Gross job gains are the sum of increases in employment from expansions at existing establishments and the addition of new jobs at opening establishments. Gross job losses are the result of contractions in employment at existing establishments and the loss of jobs at closing establishments. The difference between the number of gross job gains and the number of gross job losses is the net change in employment. (See the [Technical Note](#) for more information.)

The number of gross job gains in September 2014, although larger than June 2014, remained below the recent peak of more than 115,000 jobs in March 2012. Louisiana's employment gains have remained above 105,000 each quarter since September 2013. Gross job losses declined by 9,654 in the three months ended in September 2014 after increasing in the previous quarter. During the last five years, gross job losses in the state peaked in September 2009 when more than 111,000 jobs were lost, but have remained below 100,000 in four of the last five quarters. (See [chart 1](#).)

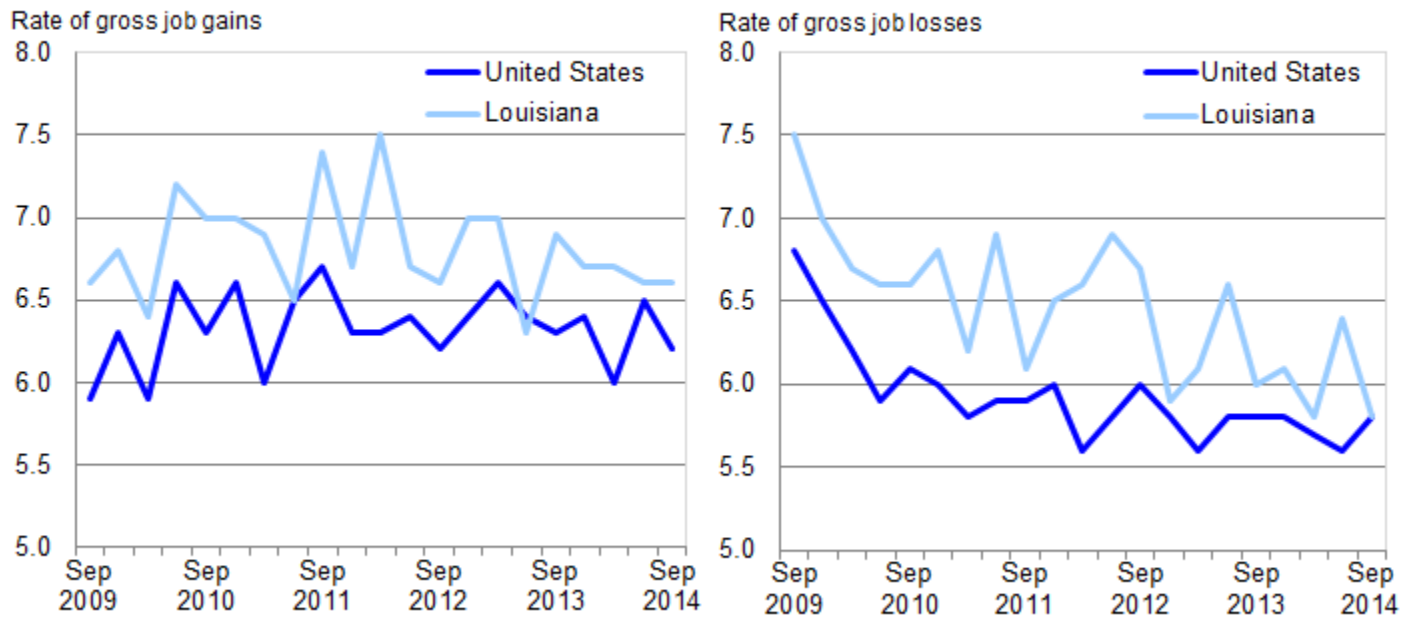
Chart 1. Private sector gross job gains and losses in Louisiana, September 2009–September 2014 by quarter, seasonally adjusted



Source: U.S. Bureau of Labor Statistics.

Gross job gains represented 6.6 percent of private sector employment in Louisiana in the quarter ended September 2014, while nationally gross job gains accounted for 6.2 percent of private employment. (See [chart 2](#).) With the exception of June 2013, Louisiana's rates of gross job gain have equaled or exceeded the U.S. rates in every quarter since December 2004. Similarly, Louisiana's rates of gross job loss have consistently exceeded the national averages since the third quarter of 1998, though the state's September 2014 rate of 5.8 percent matched the U.S. rate. Gross job loss rates have trended downward for both the state and nation since 2009, with the latest state rate matching its series low first recorded in March 2014.

Chart 2. Private sector gross job gains and losses as a percent of employment, United States and Louisiana, September 2009–September 2014, seasonally adjusted



Source: U.S. Bureau of Labor Statistics.

During the third quarter of 2014, Louisiana gross job gains exceeded gross job losses in 8 of the 11 industry sectors. For example, within construction, gross job gains exceeded gross job losses by 6,760. While nearly 10,500 jobs were lost at closing and contracting establishments in the industry, more than 17,200 jobs were created at opening and expanding establishments in the 3 months ended in September 2014. In education and health services, more than 13,300 jobs were created in opening and expanding establishments and approximately 10,000 jobs were lost in closing and contracting establishments, resulting in a net gain of 3,350. The leisure and hospitality industry led all sectors in gross job losses, with more than 16,700 jobs lost at closing and contracting establishments. However, these job losses were offset by the creation of more than 16,800 jobs at opening and expanding establishments in the industry. (See [table 1](#).)

In contrast, gross job losses exceeded gross job gains in three industry sectors in Louisiana in September 2014. Within information, gross job losses exceeded gross job gains by 1,423. Gross job losses exceeded gross job gains by less than 120 in two sectors in the state in the third quarter of 2014, manufacturing and other services.

Additional statistics and other information

BED data for the states have been included in [table 2](#) of this release. For more information on the Business Employment Dynamics data, visit the BED web site at www.bls.gov/bdm/.

The Business Employment Dynamics release for Fourth Quarter 2014 are scheduled to be released on Wednesday, July 29, 2015.

Technical Note

The Business Employment Dynamics (BED) data are a product of a federal-state cooperative program known as Quarterly Census of Employment and Wages (QCEW), or the ES-202 program. The BED data are compiled from existing QCEW records. The QCEW reports are sent by the State Employment Security Agencies (SESAs) to BLS and form the basis of the Bureau's QCEW program and establishment universe sampling frame. These reports are also used to produce the QCEW data on total employment and wages. Other important Bureau uses of the QCEW reports are in the Current Employment Statistics (CES) program. The CES program produces monthly estimates of employment, net changes, and earnings by detailed industry.

In the BED program, the QCEW records are linked across quarters to provide a longitudinal history for each establishment. The linkage process allows the tracking of net employment changes at the establishment level, which in turn allows the estimation of jobs gained at opening and expanding establishments and jobs lost at closing and contracting establishments.

The change in the number of jobs over time is the net result of increases and decreases in employment that occur at all businesses in the economy. BED statistics track these changes in employment at private business establishments from the third month of one quarter to the third month of the next. Gross job gains are the sum of increases in employment from expansions at existing establishments and the addition of new jobs at opening establishments. Gross job losses are the result of contractions in employment at existing establishments and the loss of jobs at closing establishments. The difference between the number of gross jobs gained and the number of gross jobs lost is the net change in employment.

Gross job gains and gross job losses are expressed as rates by dividing their levels by the average of employment in the current and previous quarters. The rates are calculated for the components of gross job gains and gross job losses and then summed to form their respective totals. These rates can be added and subtracted just as their levels can. For instance, the difference between the gross job gains rate and the gross job losses rate is the net growth rate.

The formal definitions of employment changes are as follows:

Openings. These are either establishments with positive third month employment for the first time in the current quarter, with no links to the prior quarter, or with positive third month employment in the current quarter following zero employment in the previous quarter.

Expansions. These are establishments with positive employment in the third month in both the previous and current quarters, with a net increase in employment over this period.

Closings. These are either establishments with positive third month employment in the previous quarter, with no employment or zero employment reported in the current quarter.

Contractions. These are establishments with positive employment in the third month in both the previous and current quarters, with a net decrease in employment over this period.

Information in this release will be made available to sensory impaired individuals upon request. Voice phone: (202) 691-5200; Federal Relay Service: (800) 877-8339.

Table 1. Private sector gross job gains and losses by industry, Louisiana, seasonally adjusted

Category	Gross job gains and job losses (3 months ended)					Gross job gains and job losses as a percent of employment (3 months ended)				
	Sept. 2013	Dec. 2013	Mar. 2014	June 2014	Sept. 2014	Sept. 2013	Dec. 2013	Mar. 2014	June 2014	Sept. 2014
Total private ⁽¹⁾										
Gross job gains	107,860	106,092	106,380	105,324	106,145	6.9	6.7	6.7	6.6	6.6
At expanding establishments	84,412	84,294	87,245	87,784	90,221	5.4	5.3	5.5	5.5	5.6
At opening establishments	23,448	21,798	19,135	17,540	15,924	1.5	1.4	1.2	1.1	1.0
Gross job losses	94,599	96,483	92,250	102,933	93,279	6.0	6.1	5.8	6.4	5.8
At contracting establishments	78,920	80,636	76,105	86,960	77,461	5.0	5.1	4.8	5.4	4.8
At closing establishments	15,679	15,847	16,145	15,973	15,818	1.0	1.0	1.0	1.0	1.0
Net employment change ⁽²⁾	13,261	9,609	14,130	2,391	12,866	0.9	0.6	0.9	0.2	0.8
Construction										
Gross job gains	13,301	12,460	17,991	13,844	17,240	10.1	9.5	13.5	10.1	12.3
At expanding establishments	11,485	10,373	15,738	12,233	15,758	8.7	7.9	11.8	8.9	11.2
At opening establishments	1,816	2,087	2,253	1,611	1,482	1.4	1.6	1.7	1.2	1.1
Gross job losses	12,463	14,640	11,395	13,251	10,480	9.4	11.2	8.6	9.6	7.5
At contracting establishments	10,835	13,013	9,449	11,977	9,085	8.2	10.0	7.1	8.7	6.5
At closing establishments	1,628	1,627	1,946	1,274	1,395	1.2	1.2	1.5	0.9	1.0
Net employment change ⁽²⁾	838	-2,180	6,596	593	6,760	0.7	-1.7	4.9	0.5	4.8
Manufacturing										
Gross job gains	5,943	6,397	5,889	5,999	5,584	4.1	4.4	4.0	4.1	3.8
At expanding establishments	5,183	5,771	5,133	5,375	5,110	3.6	4.0	3.5	3.7	3.5
At opening establishments	760	626	756	624	474	0.5	0.4	0.5	0.4	0.3
Gross job losses	5,895	5,721	5,591	5,958	5,701	4.1	3.9	3.8	4.1	3.9
At contracting establishments	5,198	5,097	5,118	5,092	5,163	3.6	3.5	3.5	3.5	3.5
At closing establishments	697	624	473	866	538	0.5	0.4	0.3	0.6	0.4
Net employment change ⁽²⁾	48	676	298	41	-117	0.0	0.5	0.2	0.0	-0.1
Wholesale trade										
Gross job gains	3,562	3,561	3,545	3,322	3,646	4.9	4.8	4.8	4.5	5.0
At expanding establishments	3,041	3,047	2,998	2,650	3,072	4.2	4.1	4.1	3.6	4.2
At opening establishments	521	514	547	672	574	0.7	0.7	0.7	0.9	0.8
Gross job losses	3,009	3,304	3,426	3,343	2,769	4.1	4.5	4.6	4.5	3.7
At contracting establishments	2,567	2,574	2,594	2,513	2,157	3.5	3.5	3.5	3.4	2.9
At closing establishments	442	730	832	830	612	0.6	1.0	1.1	1.1	0.8
Net employment change ⁽²⁾	553	257	119	-21	877	0.8	0.3	0.2	0.0	1.3
Retail trade										
Gross job gains	17,764	13,826	13,153	15,039	13,462	8.0	6.1	5.8	6.6	5.9
At expanding establishments	11,774	11,741	11,269	12,982	11,491	5.3	5.2	5.0	5.7	5.0
At opening establishments	5,990	2,085	1,884	2,057	1,971	2.7	0.9	0.8	0.9	0.9
Gross job losses	11,527	13,092	13,737	12,757	13,417	5.2	5.8	6.1	5.6	5.8
At contracting establishments	10,252	11,291	12,212	11,168	11,712	4.6	5.0	5.4	4.9	5.1
At closing establishments	1,275	1,801	1,525	1,589	1,705	0.6	0.8	0.7	0.7	0.7
Net employment change ⁽²⁾	6,237	734	-584	2,282	45	2.8	0.3	-0.3	1.0	0.1
Transportation and warehousing										
Gross job gains	4,549	4,991	4,449	4,049	4,327	6.3	6.8	6.0	5.4	5.7
At expanding establishments	3,693	4,186	3,647	3,447	3,773	5.1	5.7	4.9	4.6	5.0
At opening establishments	856	805	802	602	554	1.2	1.1	1.1	0.8	0.7
Gross job losses	3,916	3,142	3,953	4,472	2,842	5.4	4.3	5.3	5.9	3.7
At contracting establishments	2,954	2,490	3,217	4,019	2,388	4.1	3.4	4.3	5.3	3.1
At closing establishments	962	652	736	453	454	1.3	0.9	1.0	0.6	0.6
Net employment change ⁽²⁾	633	1,849	496	-423	1,485	0.9	2.5	0.7	-0.5	2.0
Information										
Gross job gains	3,099	3,069	3,035	3,233	2,243	11.8	12.0	11.9	12.2	8.7
At expanding establishments	2,510	2,830	2,673	2,720	1,865	9.6	11.1	10.5	10.3	7.2
At opening establishments	589	239	362	513	378	2.2	0.9	1.4	1.9	1.5
Gross job losses	4,929	2,009	2,963	2,401	3,666	18.8	7.9	11.7	9.1	14.2

Note: See footnotes at end of table.

Table 1. Private sector gross job gains and losses by industry, Louisiana, seasonally adjusted - Continued

Category	Gross job gains and job losses (3 months ended)					Gross job gains and job losses as a percent of employment (3 months ended)				
	Sept. 2013	Dec. 2013	Mar. 2014	June 2014	Sept. 2014	Sept. 2013	Dec. 2013	Mar. 2014	June 2014	Sept. 2014
At contracting establishments	4,622	1,814	2,586	2,000	3,329	17.6	7.1	10.2	7.6	12.9
At closing establishments	307	195	377	401	337	1.2	0.8	1.5	1.5	1.3
Net employment change ⁽²⁾	-1,830	1,060	72	832	-1,423	-7.0	4.1	0.2	3.1	-5.5
Financial activities										
Gross job gains	4,726	4,442	4,048	5,397	5,305	5.2	5.0	4.6	6.1	5.9
At expanding establishments	3,989	3,475	3,227	4,561	4,381	4.4	3.9	3.7	5.2	4.9
At opening establishments	737	967	821	836	924	0.8	1.1	0.9	0.9	1.0
Gross job losses	3,973	5,386	4,490	5,267	4,613	4.4	6.0	5.1	5.9	5.2
At contracting establishments	3,100	4,511	3,581	4,261	3,477	3.4	5.0	4.1	4.8	3.9
At closing establishments	873	875	909	1,006	1,136	1.0	1.0	1.0	1.1	1.3
Net employment change ⁽²⁾	753	-944	-442	130	692	0.8	-1.0	-0.5	0.2	0.7
Professional and business services										
Gross job gains	16,711	18,182	17,678	16,339	16,649	8.1	8.6	8.4	7.7	7.8
At expanding establishments	13,426	14,322	14,374	13,555	13,651	6.5	6.8	6.8	6.4	6.4
At opening establishments	3,285	3,860	3,304	2,784	2,998	1.6	1.8	1.6	1.3	1.4
Gross job losses	15,471	14,710	16,823	16,965	15,288	7.5	7.0	7.9	8.0	7.2
At contracting establishments	12,189	11,776	12,696	13,538	12,031	5.9	5.6	6.0	6.4	5.7
At closing establishments	3,282	2,934	4,127	3,427	3,257	1.6	1.4	1.9	1.6	1.5
Net employment change ⁽²⁾	1,240	3,472	855	-626	1,361	0.6	1.6	0.5	-0.3	0.6
Education and health services										
Gross job gains	14,914	15,709	13,096	11,964	13,361	5.5	5.7	4.7	4.3	4.7
At expanding establishments	11,749	10,143	9,545	9,738	11,556	4.3	3.7	3.4	3.5	4.1
At opening establishments	3,165	5,566	3,551	2,226	1,805	1.2	2.0	1.3	0.8	0.6
Gross job losses	10,927	12,383	10,602	13,173	10,011	4.0	4.5	3.8	4.7	3.5
At contracting establishments	8,495	9,855	8,883	11,240	7,660	3.1	3.6	3.2	4.0	2.7
At closing establishments	2,432	2,528	1,719	1,933	2,351	0.9	0.9	0.6	0.7	0.8
Net employment change ⁽²⁾	3,987	3,326	2,494	-1,209	3,350	1.5	1.2	0.9	-0.4	1.2
Leisure and hospitality										
Gross job gains	15,764	16,141	15,641	18,492	16,843	7.3	7.5	7.2	8.4	7.7
At expanding establishments	11,621	12,725	12,265	14,167	13,384	5.4	5.9	5.6	6.4	6.1
At opening establishments	4,143	3,416	3,376	4,325	3,459	1.9	1.6	1.6	2.0	1.6
Gross job losses	15,405	14,510	12,664	16,608	16,760	7.2	6.7	5.8	7.5	7.6
At contracting establishments	12,852	12,112	10,288	13,675	14,103	6.0	5.6	4.7	6.2	6.4
At closing establishments	2,553	2,398	2,376	2,933	2,657	1.2	1.1	1.1	1.3	1.2
Net employment change ⁽²⁾	359	1,631	2,977	1,884	83	0.1	0.8	1.4	0.9	0.1
Other services ⁽³⁾										
Gross job gains	3,129	2,832	3,229	3,277	3,093	7.1	6.5	7.3	7.4	7.0
At expanding establishments	2,439	2,143	2,514	2,641	2,568	5.5	4.9	5.7	6.0	5.8
At opening establishments	690	689	715	636	525	1.6	1.6	1.6	1.4	1.2
Gross job losses	3,053	3,055	2,866	3,142	3,133	6.9	7.0	6.5	7.2	7.1
At contracting establishments	2,472	2,457	2,264	2,540	2,557	5.6	5.6	5.1	5.8	5.8
At closing establishments	581	598	602	602	576	1.3	1.4	1.4	1.4	1.3
Net employment change ⁽²⁾	76	-223	363	135	-40	0.2	-0.5	0.8	0.2	-0.1

(1) Includes unclassified sector not shown separately.

(2) The net employment change is the difference between total gross job gains and total gross job losses. See the Technical Note for further information.

(3) Except public administration.

Table 2. Private sector gross job gains and losses as a percent of total employment by state, seasonally adjusted

State	Gross job gains as a percent of employment (3 months ended)					Gross job losses as a percent of employment (3 months ended)				
	Sept. 2013	Dec. 2013	Mar. 2014	June 2014	Sept. 2014	Sept. 2013	Dec. 2013	Mar. 2014	June 2014	Sept. 2014
United States ⁽¹⁾	6.3	6.4	6.0	6.5	6.2	5.8	5.8	5.7	5.6	5.8
Alabama	5.5	6.0	5.6	5.9	5.9	5.7	5.3	5.7	5.5	5.4
Alaska	9.8	10.1	10.8	10.9	9.4	10.1	10.4	9.6	10.9	10.4
Arizona	6.4	6.7	5.7	6.0	6.4	5.5	5.4	6.0	6.0	5.4
Arkansas	5.8	6.0	5.8	5.6	5.9	5.7	5.5	5.0	4.9	5.3
California	6.9	7.3	6.8	7.0	7.0	6.2	6.3	6.1	6.4	6.0
Colorado	7.0	6.9	6.7	7.3	7.3	6.3	6.1	5.9	6.1	6.2
Connecticut	5.3	5.3	5.1	5.6	5.2	5.4	5.4	5.0	4.8	5.3
Delaware	6.6	6.6	6.3	6.5	6.0	6.0	5.8	5.9	5.2	6.1
District of Columbia	6.0	5.8	5.9	6.4	5.7	5.1	5.4	5.5	5.7	5.5
Florida	7.0	7.0	6.5	7.2	7.2	6.2	6.0	5.8	6.2	5.9
Georgia.....	6.6	6.8	6.5	6.8	6.8	6.0	5.8	5.6	5.9	5.9
Hawaii.....	5.6	5.4	4.8	4.9	5.2	4.7	4.5	5.1	5.1	4.7
Idaho	7.7	8.3	8.4	7.7	7.5	7.2	7.3	7.2	8.0	7.3
Illinois	5.7	5.8	5.8	6.1	5.7	5.7	5.3	5.5	5.5	5.8
Indiana.....	5.6	6.1	5.3	5.9	5.3	5.4	5.1	5.5	5.0	5.3
Iowa	5.9	6.0	5.8	6.2	5.7	5.5	5.5	5.5	5.7	5.7
Kansas	6.1	6.2	5.7	6.1	5.7	5.7	5.3	5.5	5.7	5.8
Kentucky.....	6.0	6.5	6.1	6.2	6.1	5.5	5.4	5.9	5.5	5.4
Louisiana	6.9	6.7	6.7	6.6	6.6	6.0	6.1	5.8	6.4	5.8
Maine.....	7.4	7.0	6.7	7.8	6.7	7.3	7.5	7.0	6.5	7.1
Maryland.....	6.1	6.4	5.9	6.6	6.5	6.1	6.3	5.8	5.8	6.2
Massachusetts	5.5	5.4	5.3	6.3	5.6	5.5	5.3	5.0	5.3	5.5
Michigan	5.9	6.0	5.5	6.4	5.5	5.8	5.6	5.1	5.4	5.8
Minnesota.....	5.6	5.6	5.3	6.5	5.5	5.5	5.6	5.7	5.1	5.9
Mississippi	6.2	6.6	5.7	6.1	6.2	5.8	5.6	5.9	6.7	6.0
Missouri	5.8	6.0	5.6	6.0	5.6	5.7	5.5	5.5	5.3	5.6
Montana	7.7	8.2	7.2	8.2	8.0	7.6	7.5	7.9	7.7	8.1
Nebraska	6.3	6.3	5.9	6.0	6.0	5.7	5.7	5.6	6.0	5.7
Nevada	6.0	6.3	6.6	6.7	6.6	5.8	5.3	5.2	5.6	5.5
New Hampshire.....	6.0	6.8	5.7	6.7	5.9	6.5	5.8	5.9	6.1	6.3
New Jersey.....	6.2	6.4	5.9	6.9	6.3	6.2	6.4	6.2	5.8	6.3
New Mexico.....	6.7	6.9	6.3	6.6	6.5	6.7	6.4	6.4	6.1	6.1
New York	6.4	6.6	6.2	6.6	6.4	6.1	6.0	6.0	5.7	6.0
North Carolina	6.3	6.4	5.9	6.4	6.1	5.8	5.7	5.6	5.5	5.8
North Dakota	8.3	8.2	8.6	7.6	8.2	6.9	6.9	6.8	7.0	6.7
Ohio.....	5.6	6.0	5.6	6.1	5.5	5.6	5.3	5.6	5.3	5.5
Oklahoma	6.4	6.2	6.1	6.2	6.1	5.7	6.2	6.0	6.1	5.5
Oregon	7.1	6.9	7.0	6.9	7.0	6.3	6.6	6.1	6.4	6.0
Pennsylvania	5.2	5.4	5.2	5.6	5.2	5.2	5.2	4.9	4.8	5.1
Rhode Island	6.2	6.2	5.7	6.5	5.9	6.1	5.7	5.7	5.5	5.8
South Carolina.....	6.2	6.7	6.2	6.5	6.1	5.6	5.5	5.8	5.7	5.8
South Dakota.....	6.2	6.9	6.3	6.4	6.2	6.3	6.0	6.1	6.0	6.0
Tennessee	5.5	6.3	5.4	5.6	5.7	5.3	4.7	5.3	5.0	5.0
Texas	6.0	6.1	5.9	6.0	6.0	5.2	5.3	5.1	4.9	5.1
Utah.....	6.9	7.4	6.5	7.0	7.1	6.4	6.1	6.0	6.6	6.0
Vermont.....	7.1	7.6	6.7	7.4	6.8	7.4	6.6	6.8	6.9	7.2
Virginia.....	5.9	5.7	5.3	6.2	5.6	5.9	5.6	5.5	5.5	5.8
Washington.....	7.0	6.9	6.6	7.3	7.0	6.6	6.3	5.9	5.5	6.0
West Virginia	6.0	6.5	6.3	6.6	6.1	6.4	6.4	6.7	6.4	6.6
Wisconsin	5.5	5.7	5.3	5.9	5.3	5.4	5.2	5.1	5.0	5.6
Wyoming	8.4	9.4	8.4	8.7	8.3	8.2	8.1	8.0	8.2	8.4
Puerto Rico.....	6.1	6.6	5.1	5.6	5.6	6.6	5.2	6.4	6.3	5.9

Note: See footnotes at end of table.

Table 2. Private sector gross job gains and losses as a percent of total employment by state, seasonally adjusted - Continued

State	Gross job gains as a percent of employment (3 months ended)					Gross job losses as a percent of employment (3 months ended)				
	Sept. 2013	Dec. 2013	Mar. 2014	June 2014	Sept. 2014	Sept. 2013	Dec. 2013	Mar. 2014	June 2014	Sept. 2014
Virgin Islands.....	5.7	5.5	4.9	6.1	6.3	6.5	6.0	6.1	6.4	5.5

(1) Totals for the United States do not include data for Puerto Rico or the Virgin Islands.