



For Release: Monday, February 01, 2016

16-83-DAL

SOUTHWEST INFORMATION OFFICE: Dallas, Texas

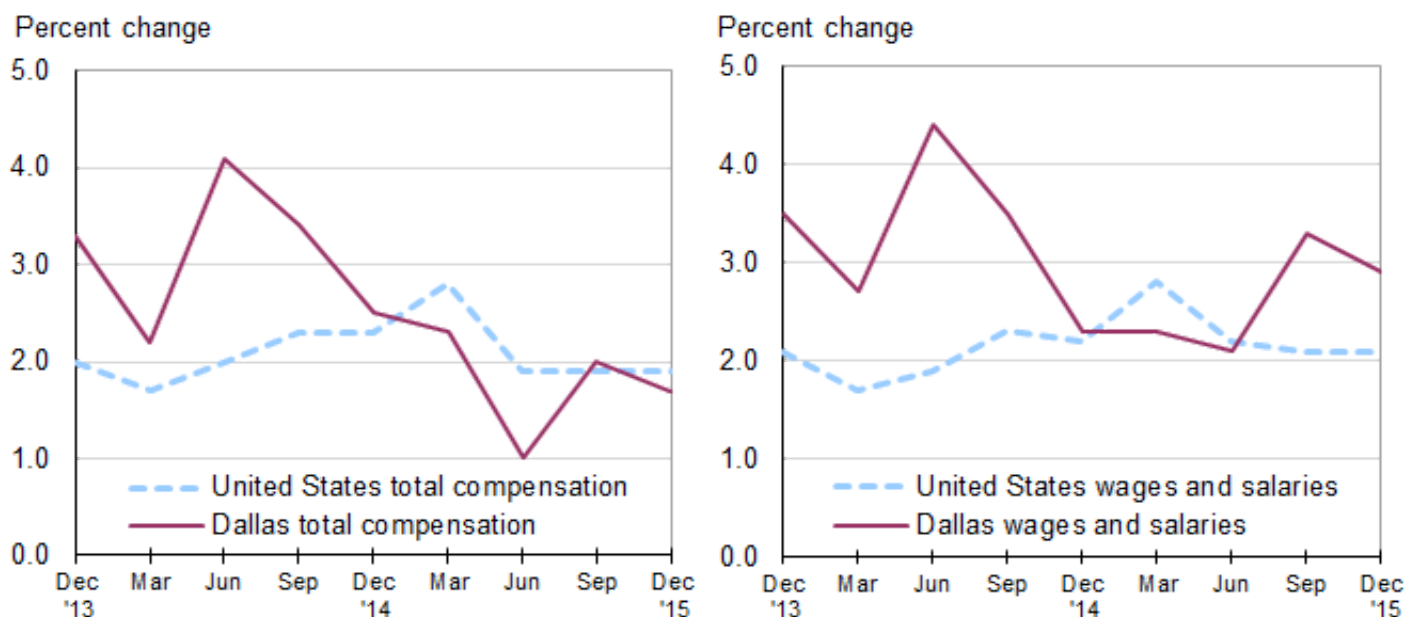
Technical information: (972) 850-4800 BLSInfoDallas@bls.gov www.bls.gov/regions/southwest

Media contact: (972) 850-4800

Changing Compensation Costs in the Dallas Metropolitan Area – December 2015

Total compensation costs for private industry workers increased 1.7 percent in the Dallas-Fort Worth, Texas, metropolitan area for the year ended in December 2015, according to the U.S. Bureau of Labor Statistics. Regional Commissioner Stanley W. Suchman noted that one year ago, Dallas-Fort Worth experienced an annual gain of 2.5 percent in total compensation costs. Locally, wages and salaries, the largest component of total compensation costs, advanced at a 2.9-percent pace for the 12-month period ended in December 2015. Nationwide, total compensation costs rose 1.9 percent and wages and salaries rose 2.1 percent over the same period. (See [chart 1](#) and [table 1](#).)

Chart 1. Twelve-month percent changes in the Employment Cost Index, private industry workers, United States and the Dallas area, not seasonally adjusted, December 2013–December 2015

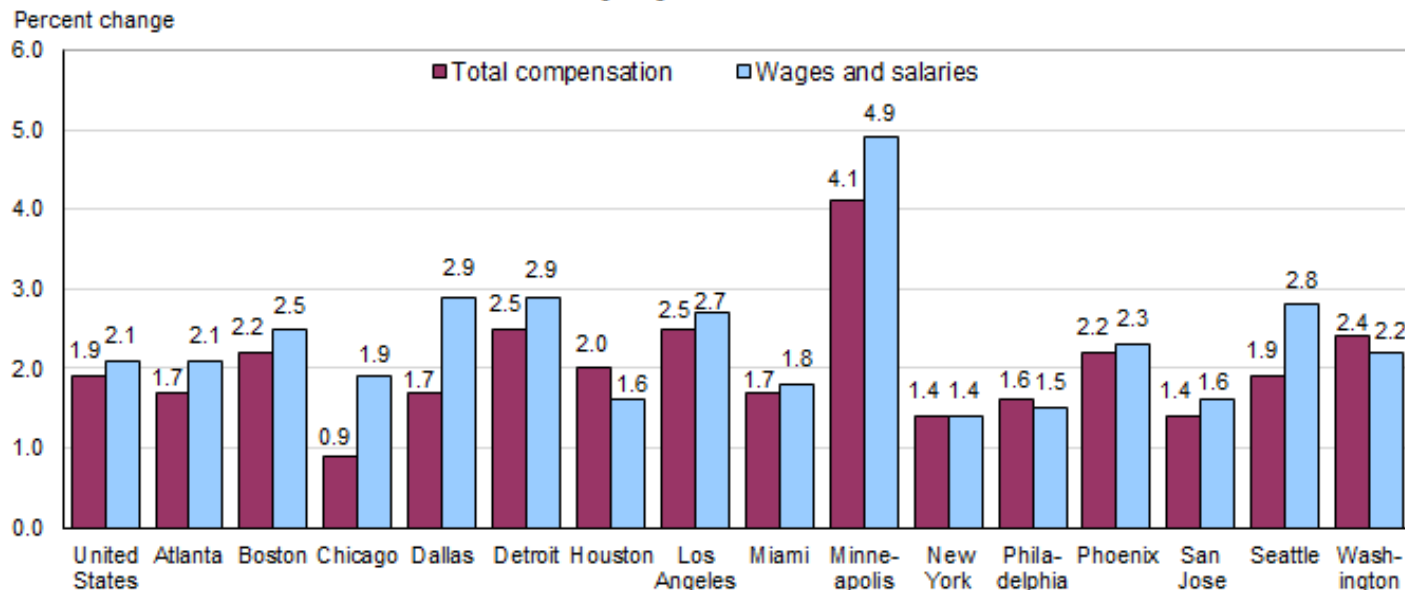


Source: U.S. Bureau of Labor Statistics.

Dallas is 1 of 15 metropolitan areas in the United States and 1 of 5 areas in the South region of the country for which locality compensation data are available. Among these 15 largest areas, over-the-year percentage increases in total compensation costs ranged from 4.1 percent in Minneapolis to 0.9 percent in Chicago in December 2015. For wages and salaries, Minneapolis registered the largest annual gain (4.9 percent) while New York registered the smallest (1.4 percent). (See [chart 2](#).)

The annual increase in total compensation costs in Dallas-Fort Worth in December 2015, at 1.7 percent, compared to advances ranging from 2.4 to 1.7 percent in the four other metropolitan areas in the South (Atlanta, Houston, Miami, and Washington). Dallas-Fort Worth's 2.9-percent gain in wages and salaries over this 12-month period compared to rates ranging from 2.2 to 1.6 percent in the four other southern localities. (See [table 2](#).)

Chart 2. Twelve-month percent change in the Employment Cost Index, private industry workers, United States and localities, not seasonally adjusted, December 2015



Source: U.S. Bureau of Labor Statistics.

Locality compensation costs are part of the national Employment Cost Index (ECI), which measures quarterly changes in total compensation costs, including wages, salaries, and employer costs for employee benefits. In addition to the 15 local estimates provided in this release, ECI data for the nation, 4 geographical regions, and 9 geographical divisions are available. (Geographical definitions for the metropolitan areas mentioned in this release are included in the [Technical Note](#).)

In addition to the geographic data, a comprehensive national report is available that provides data by industry, occupational group, and union status, as well as for both private, and state and local government employees. The release is available on the Internet at www.bls.gov/ncs/ect/home.htm. Current and historical information from other Bureau programs may be accessed via our regional homepage at www.bls.gov/regions/southwest.

The Employment Cost Index for March 2016 is scheduled to be released on Friday, April 29, 2016, at 8:30 a.m. (EDT).

Technical Note

The Employment Cost Index (ECI) measures the change in the cost of labor, free from the influence of employment shifts among occupations and industries. The compensation series includes changes in wages and salaries and employer costs for employee benefits.

Wages and salaries are defined as straight-time average hourly earnings or, for workers not paid on an hourly basis, straight-time earnings divided by the corresponding hours. Straight-time wage and salary rates are total earnings before payroll deductions, excluding premium pay for overtime, work on weekends and holidays, and shift differentials. Production bonuses, incentive earnings, commission payments, and cost-of-living adjustments are included in straight-time earnings, whereas nonproduction bonuses (such as Christmas or year-end bonuses) are excluded. Also excluded are such items as payments-in-kind, free room and board, and tips.

Based on available resources and the existing ECI sample, it was determined that estimates would be published for 15 metropolitan areas. Since the ECI sample sizes by area are directly related to area employment, the areas with the largest private industry employment as of the year 2000 were selected. For each of these areas, 12-month percent changes and associated standard errors were computed for the periods since December 2006.

The metropolitan area definitions of the 15 published localities are listed below.

- **Atlanta-Sandy Springs-Gainesville, Ga.-Ala. Combined Statistical Area (CSA)** includes Barrow, Bartow, Butts, Carroll, Cherokee, Clayton, Cobb, Coweta, Dawson, DeKalb, Douglas, Fayette, Forsyth, Fulton, Gwinnett, Hall, Haralson, Heard, Henry, Jasper, Lamar, Meriwether, Newton, Paulding, Pickens, Pike, Polk, Rockdale, Spalding, Troup, Upson, and Walton Counties in Georgia; and Chambers County in Alabama.
- **Boston-Worcester-Manchester, Mass.-N.H. CSA** includes Essex, Middlesex, Norfolk, Plymouth, Suffolk, and Worcester Counties in Massachusetts and Belknap, Hillsborough, Merrimack, Rockingham, and Strafford Counties in New Hampshire.
- **Chicago-Naperville-Michigan City, Ill.-Ind.-Wis. CSA** includes Cook, DeKalb, DuPage, Grundy, Kane, Kankakee, Kendall, Lake, McHenry, and Will Counties in Illinois; Jasper, Lake, LaPorte, Newton, and Porter Counties in Indiana; and Kenosha County in Wisconsin.
- **Dallas-Fort Worth, Texas CSA** includes Collin, Cooke, Dallas, Delta, Denton, Ellis, Henderson, Hood, Hunt, Johnson, Kaufman, Palo Pinto, Parker, Rockwall, Somervell, Tarrant, and Wise Counties in Texas.
- **Detroit-Warren-Flint, Mich. CSA** includes Genesee, Lapeer, Livingston, Macomb, Monroe, Oakland, St. Clair, Washtenaw, and Wayne Counties in Michigan.
- **Houston-Baytown-Huntsville, Texas CSA** includes Austin, Brazoria, Chambers, Fort Bend, Galveston, Harris, Liberty, Matagorda, Montgomery, San Jacinto, Walker, and Waller Counties in Texas.
- **Los Angeles-Long Beach-Riverside, Calif. CSA** includes Los Angeles, Orange, Riverside, San Bernardino, and Ventura Counties in California.
- **Miami-Fort Lauderdale-Pompano Beach, Fla. Metropolitan Statistical Area (MSA)** includes Broward, Miami-Dade, and Palm Beach Counties in Florida.
- **Minneapolis-St. Paul-St. Cloud, Minn.-Wis. CSA** includes Anoka, Benton, Carver, Chisago, Dakota, Goodhue, Hennepin, Isanti, McLeod, Ramsey, Rice, Scott, Sherburne, Stearns, Washington, and Wright Counties in Minnesota; and Pierce and St. Croix Counties in Wisconsin.
- **New York-Newark-Bridgeport, N.Y.-N.J.-Conn.-Pa. CSA** includes Bronx, Dutchess, Kings, Nassau, New York, Orange, Putnam, Queens, Richmond, Rockland, Suffolk, Ulster, and Westchester Counties in New York; Bergen, Essex, Hudson, Hunterdon, Mercer, Middlesex, Monmouth, Morris, Ocean, Passaic, Somerset, Sussex, and Union Counties in New Jersey; Fairfield, Litchfield, and New Haven Counties in Connecticut; and Pike County in Pennsylvania.
- **Philadelphia-Camden-Vineland, Pa.-N.J.-Del.-Md. CSA** includes Bucks, Chester, Delaware, Montgomery, and Philadelphia Counties in Pennsylvania; Burlington, Camden, Cumberland, Gloucester, and Salem Counties in New Jersey; New Castle County in Delaware; and Cecil County in Maryland.
- **Phoenix-Mesa-Scottsdale, Ariz. MSA** includes Maricopa and Pinal Counties in Arizona.

- **San Jose-San Francisco-Oakland, Calif. CSA** includes Alameda, Contra Costa, Marin, Napa, San Benito, San Francisco, San Mateo, Santa Clara, Santa Cruz, Sonoma, and Solano Counties in California.
- **Seattle-Tacoma-Olympia, Wash. CSA** includes Island, King, Kitsap, Mason, Pierce, Snohomish, and Thurston Counties in Washington.
- **Washington-Baltimore-Northern Virginia, D.C.-Md.-Va.-W.Va. CSA** includes the District of Columbia; Baltimore City and Anne Arundel, Baltimore, Calvert, Carroll, Charles, Frederick, Harford, Howard, Montgomery, Prince George's, Queen Anne's, and St. Mary's Counties in Maryland; Alexandria, Fairfax, Falls Church, Fredericksburg, Manassas, Manassas Park, and Winchester Cities and Arlington, Clarke, Fairfax, Fauquier, Frederick, Loudoun, Prince William, Spotsylvania, Stafford, and Warren Counties in Virginia; and Hampshire and Jefferson Counties in West Virginia.

Definitions of the four geographic regions of the country are noted below.

- **Northeast:** Connecticut, Maine, Massachusetts, New Hampshire, New Jersey, New York, Pennsylvania, Rhode Island, and Vermont.
- **South:** Alabama, Arkansas, Delaware, the District of Columbia, Florida, Georgia, Kentucky, Louisiana, Maryland, Mississippi, North Carolina, Oklahoma, South Carolina, Tennessee, Texas, Virginia, and West Virginia.
- **Midwest:** Illinois, Indiana, Iowa, Kansas, Michigan, Minnesota, Missouri, Nebraska, North Dakota, Ohio, South Dakota, and Wisconsin.
- **West:** Alaska, Arizona, California, Colorado, Hawaii, Idaho, Montana, Nevada, New Mexico, Oregon, Utah, Washington, and Wyoming.

Information in this release will be made available to sensory impaired individuals upon request. Voice phone: (202) 691-5200; Federal Relay Service: (800) 877-8339.

Table 1. Employment Cost Index for total compensation and for wages and salaries, private industry workers, United States, South region, and the Dallas area, not seasonally adjusted

Area	Total compensation				Wages and salaries			
	12-month percent changes for period ended:				12-month percent changes for period ended:			
	March	June	Sep.	Dec.	March	June	Sep.	Dec.
United States								
2011	2.0	2.3	2.1	2.2	1.6	1.7	1.7	1.6
2012	2.1	1.8	1.9	1.8	1.9	1.8	1.8	1.7
2013	1.9	1.9	1.9	2.0	1.7	1.9	1.8	2.1
2014	1.7	2.0	2.3	2.3	1.7	1.9	2.3	2.2
2015	2.8	1.9	1.9	1.9	2.8	2.2	2.1	2.1
South								
2011	1.7	2.1	2.0	2.0	1.6	1.8	1.9	1.6
2012	2.3	2.2	2.2	2.3	2.0	2.0	2.0	2.3
2013	2.2	2.1	2.1	2.0	2.3	2.2	2.0	2.0
2014	1.7	2.0	2.2	2.2	1.7	2.0	2.3	2.2
2015	2.2	1.8	1.6	1.5	2.2	2.1	1.9	1.8
Dallas-Fort Worth								
2011	2.3	3.2	2.8	2.8	2.2	2.3	1.6	1.4
2012	2.6	1.4	1.0	1.1	1.1	0.8	0.8	1.2
2013	1.6	1.6	2.3	3.3	1.8	2.0	2.3	3.5
2014	2.2	4.1	3.4	2.5	2.7	4.4	3.5	2.3
2015	2.3	1.0	2.0	1.7	2.3	2.1	3.3	2.9

Table 2. Employment Cost Index for total compensation and for wages and salaries, private industry workers, United States, geographical regions, and localities, not seasonally adjusted

Area	Total compensation			Wages and salaries		
	12-month percent changes for period ended:			12-month percent changes for period ended:		
	Dec. 2014	Sep. 2015	Dec. 2015	Dec. 2014	Sep. 2015	Dec. 2015
United States.....	2.3	1.9	1.9	2.2	2.1	2.1
Northeast.....	2.6	2.0	1.9	2.6	2.1	2.0
Boston-Worcester-Manchester.....	3.2	3.0	2.2	3.5	3.6	2.5
New York-Newark-Bridgeport.....	2.8	1.6	1.4	2.6	1.7	1.4
Philadelphia-Camden-Vineland.....	2.0	2.1	1.6	2.0	2.2	1.5
South.....	2.2	1.6	1.5	2.2	1.9	1.8
Atlanta-Sandy Springs-Gainesville.....	3.2	2.0	1.7	1.6	2.2	2.1
Dallas-Fort Worth.....	2.5	2.0	1.7	2.3	3.3	2.9
Houston-Baytown-Huntsville.....	1.7	2.5	2.0	2.1	2.5	1.6
Miami-Fort Lauderdale-Pompano Beach.....	2.1	2.7	1.7	2.5	2.6	1.8
Washington-Baltimore-Northern Virginia.....	1.4	2.3	2.4	1.2	1.8	2.2
Midwest.....	2.1	1.7	1.8	1.7	2.1	2.3
Chicago-Naperville-Michigan City.....	3.3	1.1	0.9	1.9	1.8	1.9
Detroit-Warren-Flint.....	1.0	1.9	2.5	0.2	2.4	2.9
Minneapolis-St. Paul-St. Cloud.....	2.3	2.4	4.1	2.6	2.4	4.9
West.....	2.4	2.2	2.3	2.5	2.4	2.5
Los Angeles-Long Beach-Riverside.....	2.8	2.2	2.5	2.4	2.6	2.7
Phoenix-Mesa-Scottsdale.....	1.3	2.5	2.2	1.4	2.7	2.3
San Jose-San Francisco-Oakland.....	4.8	1.5	1.4	4.9	1.8	1.6
Seattle-Tacoma-Olympia.....	4.8	2.2	1.9	2.7	2.9	2.8