

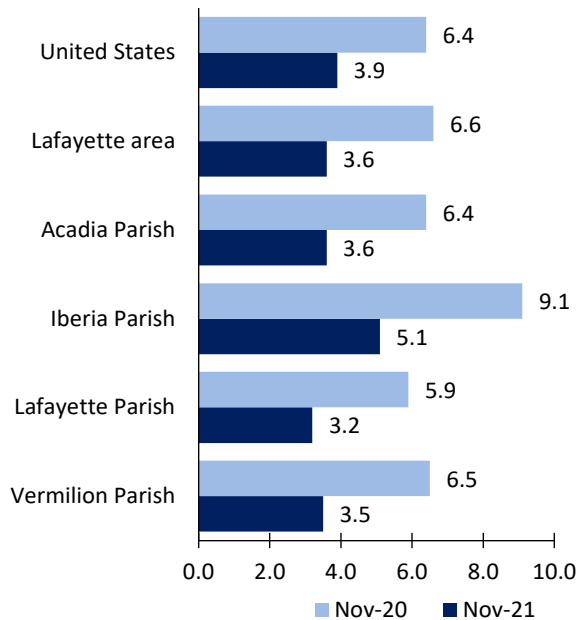
Lafayette, LA, Area Economic Summary

Updated December 30, 2021

This summary presents a sampling of economic information for the area; supplemental data are provided for regions and the nation. Subjects include **unemployment, employment, wages, prices, spending, and benefits**. All data are not seasonally adjusted and some may be subject to revision. Area definitions may differ by subject. For more area summaries and geographic definitions, see www.bls.gov/regions/economic-summaries.htm.

Unemployment rates for the nation and selected areas

Unemployment rates

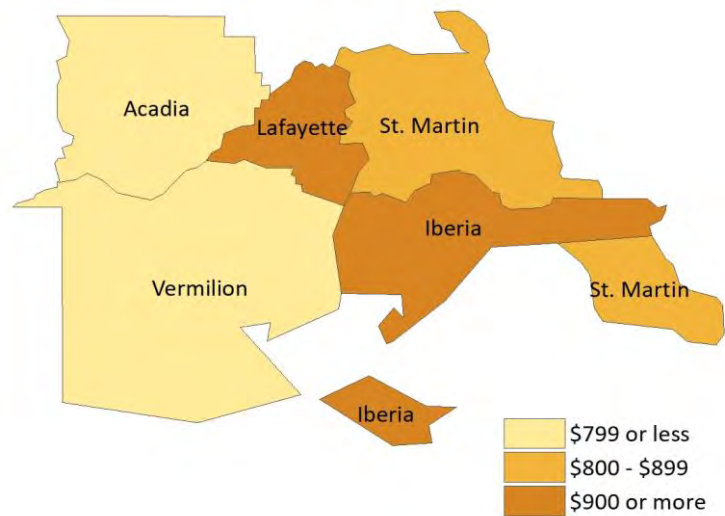


Source: U.S. BLS, Local Area Unemployment Statistics.

Average weekly wages for all industries by county

Lafayette area, second quarter 2021

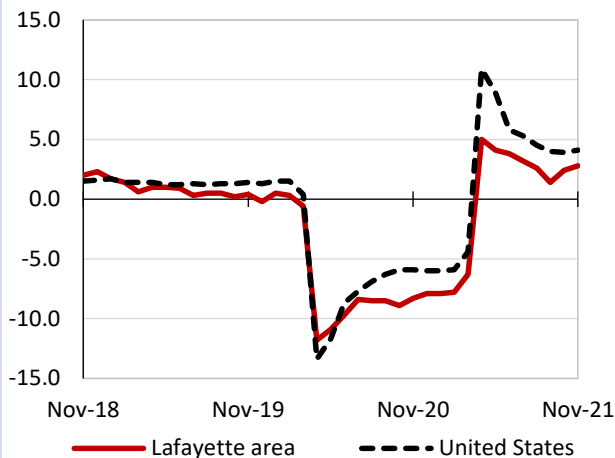
(U.S. = \$1,241; Area = \$918)



Source: U.S. BLS, Quarterly Census of Employment and Wages.

Over-the-year changes in employment on nonfarm payrolls and employment by major industry sector

12-month percent changes in employment



Source: U.S. BLS, Current Employment Statistics.

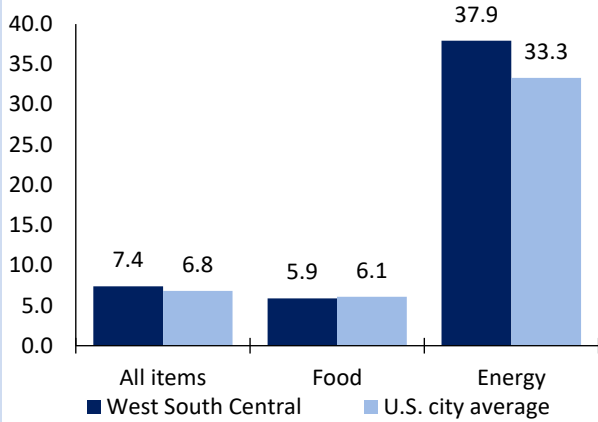
Lafayette area employment (number in thousands)	Nov. 2021	Change from Nov. 2020 to Nov. 2021	
		Number	Percent
Total nonfarm	195.3	5.4	2.8
Mining and logging	10.1	0.3	3.1
Construction	9.5	0.0	0.0
Manufacturing	13.8	0.4	3.0
Trade, transportation, and utilities	40.9	0.4	1.0
Information	2.1	0.0	0.0
Financial activities	10.2	0.3	3.0
Professional and business services	21.8	0.5	2.3
Education and health services	36.2	4.6	14.6
Leisure and hospitality	18.5	-1.3	-6.6
Other services	7.0	0.4	6.1
Government	25.2	-0.2	-0.8

Source: U.S. BLS, Current Employment Statistics.



Over-the-year change in the prices paid by urban consumers for selected categories

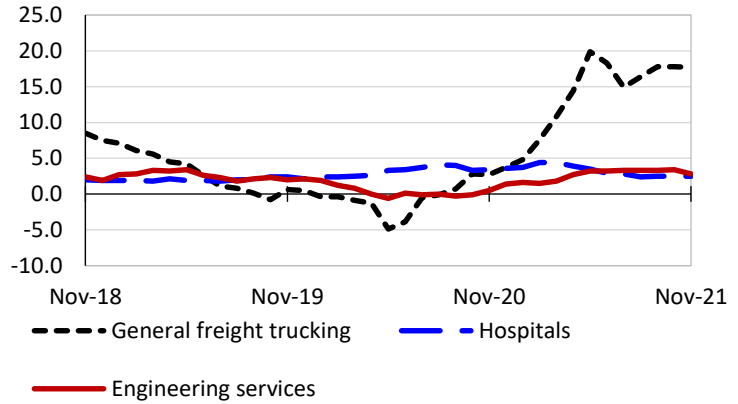
12-month percent change in CPI-U, November 2021



Source: U.S. BLS, Consumer Price Index.

Over-the-year changes in the selling prices received by producers for selected industries nationwide

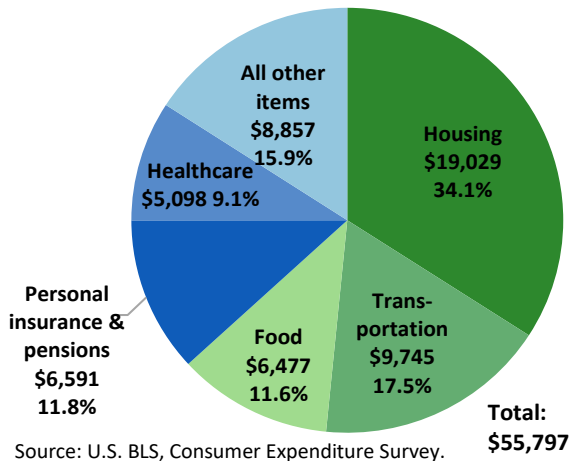
12-month percent changes in PPI



Source: U.S. BLS, Producer Price Index.

Average annual spending and percent distribution for selected categories

South average annual expenditures, 2020



Source: U.S. BLS, Consumer Expenditure Survey.

Average hourly wages for selected occupations

Occupation	Lafayette area	United States
All occupations	\$20.79	\$27.07
Human resources managers	40.80	64.70
Accountants and auditors	31.83	39.26
Construction laborers	17.63	20.67
Retail salespersons	13.19	14.87
Nursing assistants	10.90	15.41
Cooks, fast food	10.80	11.68

Source: U.S. BLS, Occupational Employment and Wage Statistics, May 2020.

Employer costs per hour worked for wages and selected employee benefits by geographic division

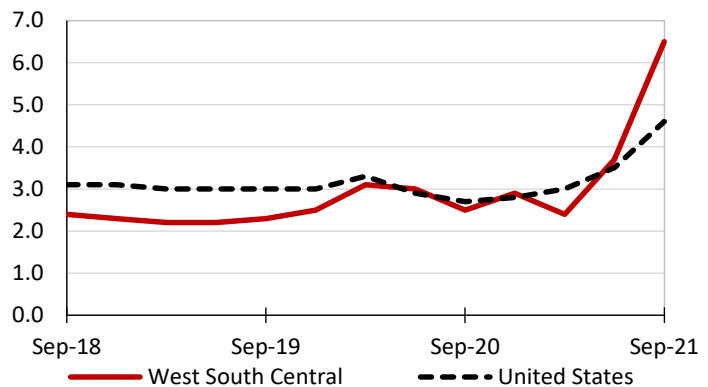
Private industry, September 2021	West South Central (1)	United States
Total compensation	\$32.72	\$37.24
Wages and salaries	24.11	26.36
Total benefits	8.60	10.88
Paid leave	2.16	2.74
Vacation	1.08	1.40
Supplemental pay	1.26	1.26
Insurance	1.99	2.80
Retirement and savings	0.85	1.28
Legally required benefits	2.35	2.80

(1) The states that compose the West South Central census division are: AR, LA, OK, and TX.

Source: U.S. BLS, Employer Costs for Employee Compensation.

Over-the-year changes in wages and salaries

12-month percent changes in ECI



Source: U.S. BLS, Employment Cost Index.

