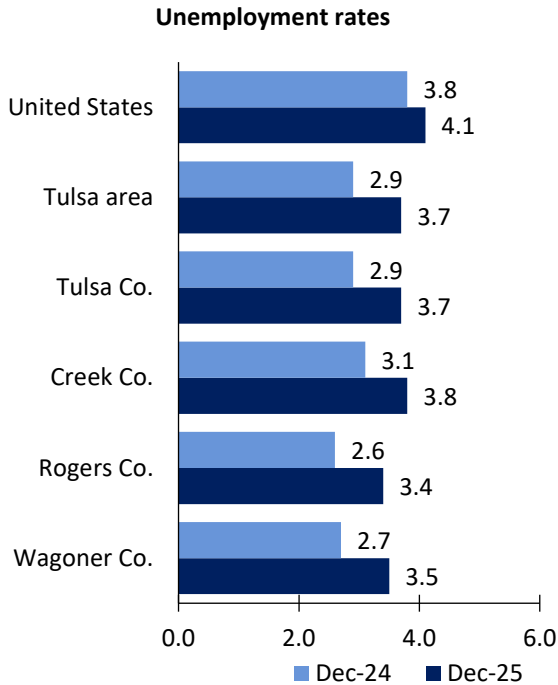


Tulsa Area Economic Summary

Updated February 13, 2026

This summary presents a sampling of economic information for the area; supplemental data are provided for regions and the nation. Subjects include **unemployment, employment, wages, prices, spending, and benefits**. All data are not seasonally adjusted and some may be subject to revision. Area definitions may differ by subject. For more area summaries and geographic definitions, see <https://www.bls.gov/regions/economic-summaries.htm>.

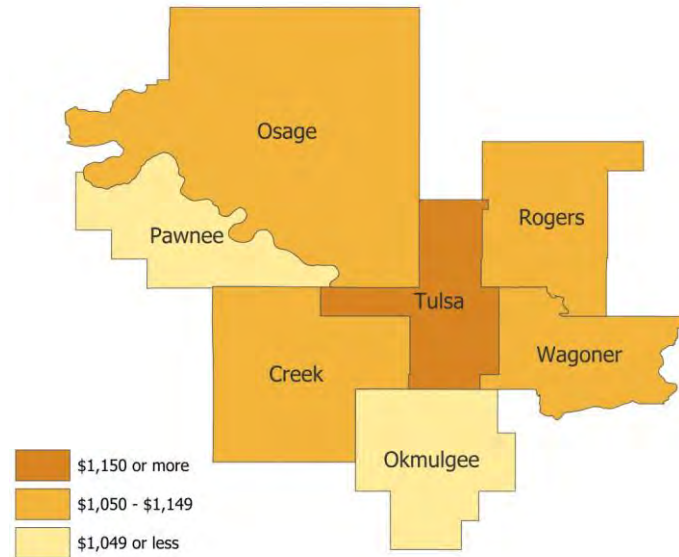
Unemployment rates for the nation and selected areas



Source: U.S. BLS, Local Area Unemployment Statistics.

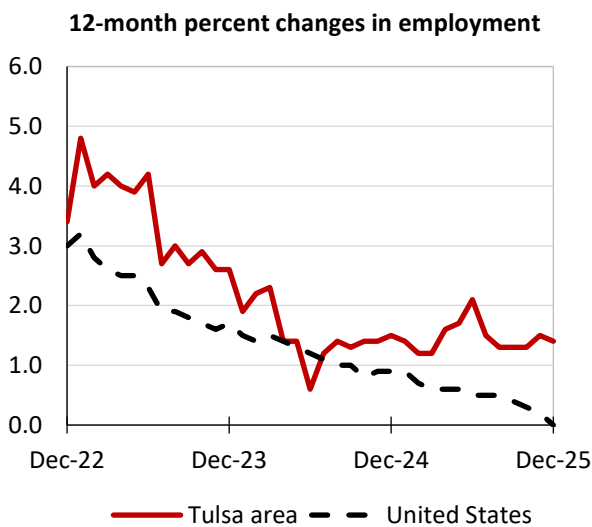
Average weekly wages for all industries by county

Tulsa area, second quarter 2025
(U.S. = \$1,436; Area = \$1,200)



Source: U.S. BLS, Quarterly Census of Employment and Wages.

Employment on nonfarm payrolls and employment by major industry sector, over-the-year changes



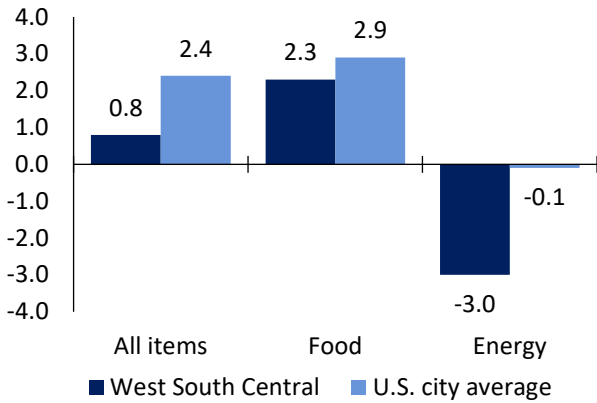
Tulsa area employment (number in thousands)	Dec. 2025	Change from Dec. 2024 to Dec. 2025	
		Number	Percent
Total nonfarm	493.0	6.9	1.4
Mining and logging	3.3	0.0	0.0
Construction	27.5	-0.1	-0.4
Manufacturing	53.9	-0.2	-0.4
Trade, transportation, and utilities	88.9	-1.5	-1.7
Information	4.9	0.0	0.0
Financial activities	25.8	0.8	3.2
Professional and business services	65.8	1.7	2.7
Education and health services	84.6	2.0	2.4
Leisure and hospitality	48.5	0.5	1.0
Other services	22.2	0.3	1.4
Government	67.6	3.4	5.3

Source: U.S. BLS, Current Employment Statistics.



Prices paid by urban consumers for selected categories, over-the-year change

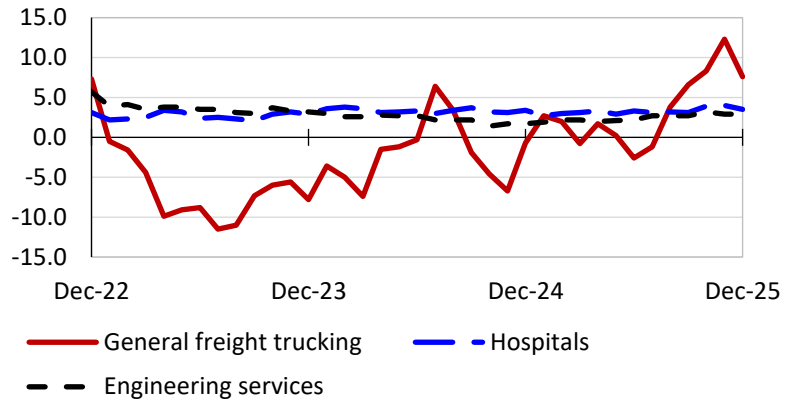
12-month percent change in CPI-U, January 2026



Source: U.S. BLS, Consumer Price Index.

Selling prices received by producers for selected industries nationwide, over-the-year change

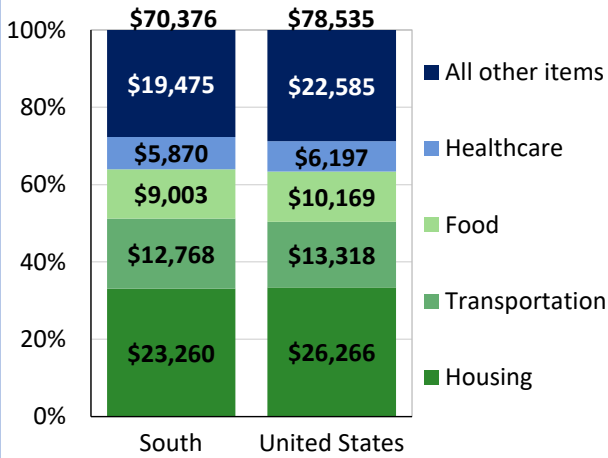
12-month percent changes in PPI



Source: U.S. BLS, Producer Price Index.

Average annual spending and percent distribution for selected categories

Average annual expenditures, 2024



Source: U.S. BLS, Consumer Expenditure Survey.

Average hourly wages for selected occupations, May 2024

Occupation	Tulsa area	United States
All occupations	\$27.52	\$32.66
Petroleum pump system operators, refinery operators, and gaugers	47.51	43.74
First-line supervisors of mechanics, installers, and repairers	39.29	39.87
Welders, cutters, solderers, and brazers	26.18	26.49
Tellers	18.12	19.68
Nursing assistants	17.41	19.84
Cooks, institution and cafeteria	14.48	17.94

Source: U.S. BLS, Occupational Employment and Wage Statistics.

Employer costs per hour worked for wages and selected employee benefits by census division

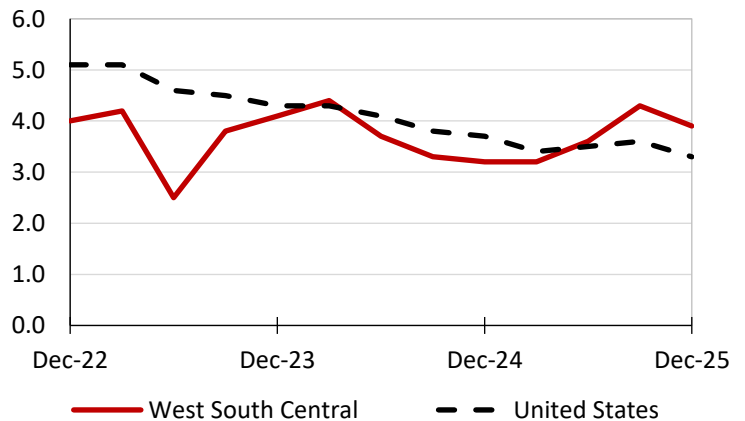
Private industry, June 2025	West South Central	United States
Total compensation	\$39.85	\$45.65
Wages and salaries	28.65	32.07
Total benefits	11.20	13.58
Paid leave	2.81	3.44
Vacation	1.43	1.75
Supplemental pay	1.52	1.84
Insurance	2.91	3.44
Retirement and savings	1.15	1.54
Legally required benefits	2.80	3.31

Map of Census Regions and Divisions

Source: U.S. BLS, Employer Costs for Employee Compensation.

Changes in wages and salaries over-the-year

12-month percent changes in ECI



Source: U.S. BLS, Employment Cost Index.

