



For Release: Friday, April 17, 2015

15-671-SAN

WESTERN INFORMATION OFFICE: San Francisco, Calif.

Technical information: (415) 625-2270 BLSinfoSF@bls.gov www.bls.gov/regions/west

Media contact: (415) 625-2270

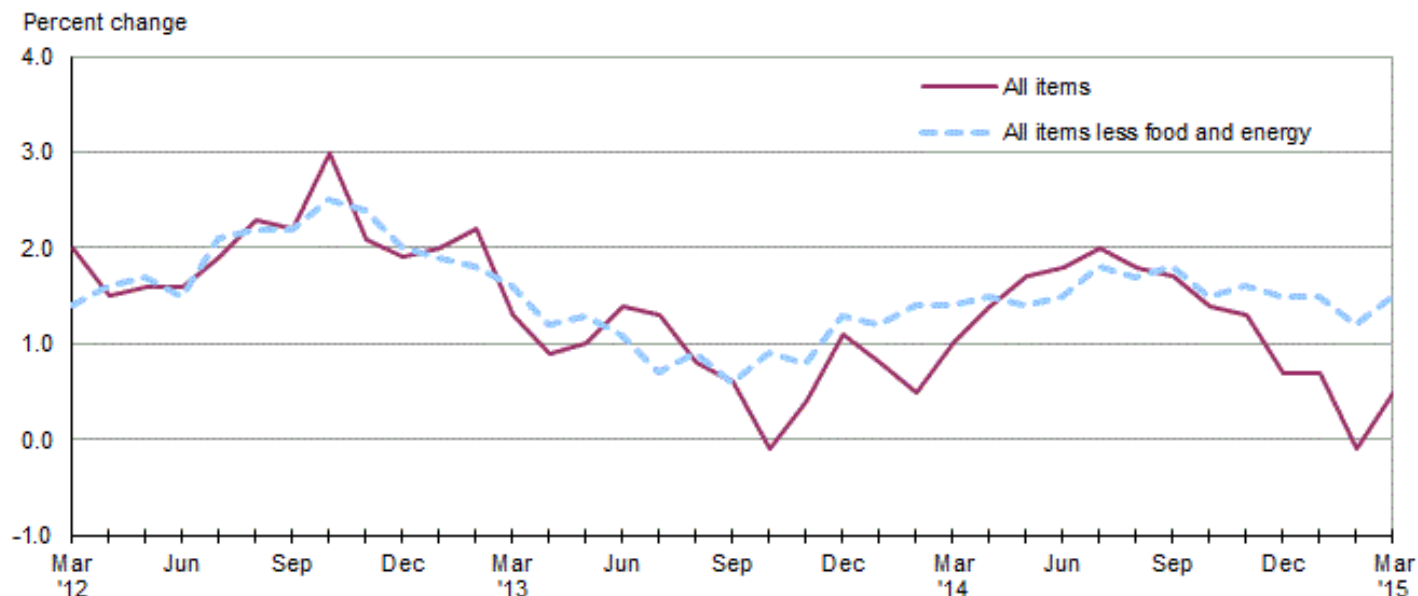
Consumer Price Index, Los Angeles area – March 2015

Area prices were up 1.0 percent over the past month, up 0.5 percent from a year ago

Prices in the Los Angeles area, as measured by the Consumer Price Index for All Urban Consumers (CPI-U), rose 1.0 percent in March, the U.S. Bureau of Labor Statistics reported today. (See [table A.](#)) Regional Commissioner Richard J. Holden noted that the March increase was influenced by higher prices for gasoline. (Data in this report are not seasonally adjusted. Accordingly, month-to-month changes may reflect seasonal influences.)

Over the last 12 months, the CPI-U advanced 0.5 percent. (See [chart 1](#) and [table A.](#)) Energy prices fell 12.6 percent, largely the result of a decrease in the price of gasoline. The index for all items less food and energy advanced 1.5 percent over the year. (See [table 1.](#))

Chart 1. Over-the-year percent change in CPI-U, Los Angeles, March 2012–March 2015



Source: U.S. Bureau of Labor Statistics.

Food

Food prices decreased 0.2 percent for the month of March. (See [table 1.](#)) Prices for food at home decreased 0.4 percent, but prices for food away from home edged up (0.1 percent) for the same period.

Over the year, food prices advanced 2.7 percent. Prices for food away from home increased 2.9 percent since a year ago, and prices for food at home rose 2.6 percent.

Energy

The energy index jumped 10.2 percent over the month. The increase was mainly due to higher prices for gasoline (18.1 percent). Prices for electricity moved down 0.6 percent, and prices for natural gas service decreased 0.4 percent for the same period.

Energy prices fell 12.6 percent over the year, largely due to lower prices for gasoline (-17.2 percent). Prices paid for natural gas service fell 12.1 percent, and prices for electricity declined 0.2 percent during the past year.

All items less food and energy

The index for all items less food and energy advanced 0.5 percent in March. Higher prices for apparel (1.6 percent), medical care (0.7 percent), and shelter (0.5 percent) were partially offset by lower prices for other goods and services (-0.2 percent) and household furnishings and operations (-0.1 percent).

Over the year, the index for all items less food and energy advanced 1.5 percent. Components contributing to the increase included shelter (3.6 percent), other goods and services (1.6 percent), and medical care (1.0 percent). Partly offsetting the increases were price declines in apparel (-4.7 percent) and recreation (-2.1 percent).

Table A . Los Angeles-Riverside-Orange County CPI-U monthly and annual percent changes (not seasonally adjusted)

Month	2010		2011		2012		2013		2014		2015	
	Monthly	Annual	Monthly	Annual	Monthly	Annual	Monthly	Annual	Monthly	Annual	Monthly	Annual
January.....	0.4	1.8	0.9	1.8	0.8	2.1	0.8	2.0	0.5	0.8	-0.3	-0.1
February.....	0.0	1.4	0.5	2.3	0.5	2.1	0.7	2.2	0.5	0.5	0.7	0.1
March.....	0.4	1.9	1.1	3.0	1.0	2.0	0.1	1.3	0.6	1.0	1.0	0.5
April.....	0.2	1.9	0.5	3.3	0.0	1.5	-0.4	0.9	0.0	1.4		
May.....	0.2	1.8	0.0	3.1	0.1	1.6	0.1	1.0	0.4	1.7		
June.....	-0.2	0.9	-0.4	2.9	-0.4	1.6	-0.1	1.4	0.1	1.8		
July.....	0.1	0.9	-0.4	2.4	-0.1	1.9	-0.1	1.3	0.1	2.0		
August.....	0.2	0.8	0.2	2.4	0.6	2.3	0.1	0.8	-0.1	1.8		
September.....	-0.1	0.4	0.5	3.1	0.4	2.2	0.2	0.6	0.0	1.7		
October.....	0.3	0.7	0.0	2.8	0.8	3.0	0.1	-0.1	-0.1	1.4		
November.....	-0.4	0.7	-0.1	3.0	-1.0	2.1	-0.5	0.4	-0.7	1.3		
December.....	0.3	1.3	-0.5	2.2	-0.7	1.9	0.0	1.1	-0.5	0.7		

The April 2015 Consumer Price Index for the Los Angeles-Riverside-Orange County is scheduled to be released on May 22, 2015.

Technical Note

The Consumer Price Index (CPI) is a measure of the average change in prices over time in a fixed market basket of goods and services. The Bureau of Labor Statistics publishes CPIs for two population groups: (1) a CPI for All Urban Consumers (CPI-U) which covers approximately 89 percent of the total population and (2) a CPI for Urban Wage Earners and Clerical Workers (CPI-W) which covers 28 percent of the total population.

The CPI-U includes, in addition to wage earners and clerical workers, groups such as professional, managerial, and technical workers, the self-employed, short-term workers, the unemployed, and retirees and others not in the labor force.

The CPI is based on prices of food, clothing, shelter, and fuels, transportation fares, charges for doctors' and dentists' services, drugs, and the other goods and services that people buy for day-to-day living. Each month, prices are collected in 87 urban areas across the country from about 4,000 housing units and approximately 26,000 retail establishments--department stores, supermarkets, hospitals, filling stations, and other types of stores and service establishments. All taxes directly associated with the purchase and use of items are included in the index.

The index measures price changes from a designated reference date (1982-84) that equals 100.0. An increase of 16.5 percent, for example, is shown as 116.5. This change can also be expressed in dollars as follows: the price of a base period "market basket" of goods and services in the CPI has risen from \$10 in 1982-84 to \$11.65. For further details see the CPI home page on the Internet at www.bls.gov/cpi and the *BLS Handbook of Methods, Chapter 17, The Consumer Price Index*, available on the Internet at www.bls.gov/opub/hom/homch17_a.htm.

In calculating the index, price changes for the various items in each location are averaged together with weights that represent their importance in the spending of the appropriate population group. Local data are then combined to obtain a U.S. city average. Because the sample size of a local area is smaller, the local area index is subject to substantially more sampling and other measurement error than the national index. In addition, local indexes are not adjusted for seasonal influences. As a result, local area indexes show greater volatility than the national index, although their long-term trends are quite similar. NOTE: Area indexes do not measure differences in the level of prices between cities; they only measure the average change in prices for each area since the base period.

The Los Angeles-Riverside-Orange County, CA. metropolitan area covered in this release is comprised of Los Angeles, Orange, Riverside, San Bernardino, and Ventura Counties in the State of California.

Information in this release will be made available to sensory impaired individuals upon request. Voice phone: 202-691-5200; Federal Relay Service: 1-800-877-8339.

Table 1. Consumer Price Index for All Urban Consumers (CPI-U): Indexes and percent changes for selected periods Los Angeles-Riverside-Orange County, CA (1982-84=100 unless otherwise noted)

Item and Group	Indexes			Percent change from-		
	Jan. 2015	Feb. 2015	Mar. 2015	Mar. 2014	Jan. 2015	Feb. 2015
Expenditure category						
All items	239.724	241.297	243.738	0.5	1.7	1.0
All items (1967=100)	708.250	712.900	720.111	-	-	-
Food and beverages	248.959	248.892	248.363	2.7	-0.2	-0.2
Food	249.162	249.082	248.534	2.7	-0.3	-0.2
Food at home	260.007	259.032	257.960	2.6	-0.8	-0.4
Food away from home	231.880	232.938	233.064	2.9	0.5	0.1
Alcoholic beverages	231.529	231.635	231.359	2.4	-0.1	-0.1
Housing	263.629	264.550	265.421	2.6	0.7	0.3
Shelter	297.583	298.537	299.897	3.6	0.8	0.5
Rent of primary residence ⁽¹⁾	311.244	312.124	313.508	3.9	0.7	0.4
Owners' equiv. rent of residences ^{(1) (2)}	309.388	310.325	311.722	3.2	0.8	0.5
Owners' equiv. rent of primary residence ^{(1) (2)}	309.380	310.319	311.712	3.2	0.8	0.4
Fuels and utilities	296.410	296.282	295.360	-0.5	-0.4	-0.3
Household energy	263.239	262.995	261.682	-3.8	-0.6	-0.5
Energy services ⁽¹⁾	262.078	261.782	260.382	-3.7	-0.6	-0.5
Electricity ⁽¹⁾	305.940	305.940	304.112	-0.2	-0.6	-0.6
Utility (piped) gas service ⁽¹⁾	207.746	206.883	206.125	-12.1	-0.8	-0.4
Household furnishings and operations	116.202	117.341	117.203	-1.9	0.9	-0.1
Apparel	107.874	109.115	110.898	-4.7	2.8	1.6
Transportation	184.091	191.014	201.691	-6.0	9.6	5.6
Private transportation	178.621	185.603	196.427	-6.0	10.0	5.8
Motor fuel	196.162	219.228	258.782	-17.3	31.9	18.0
Gasoline (all types)	191.752	214.426	253.274	-17.2	32.1	18.1
Gasoline, unleaded regular ⁽³⁾	191.777	215.041	254.262	-17.4	32.6	18.2
Gasoline, unleaded midgrade ^{(3) (4)}	184.785	203.866	241.234	-16.4	30.5	18.3
Gasoline, unleaded premium ⁽³⁾	184.240	204.587	239.499	-16.8	30.0	17.1
Medical care	424.232	418.580	421.601	1.0	-0.6	0.7
Recreation ⁽⁵⁾	102.217	102.833	102.860	-2.1	0.6	0.0
Education and communication ⁽⁵⁾	145.220	145.243	145.710	0.4	0.3	0.3
Other goods and services	382.703	382.310	381.647	1.6	-0.3	-0.2
Commodity and service group						
All items	239.724	241.297	243.738	0.5	1.7	1.0
Commodities	171.908	174.376	177.798	-2.0	3.4	2.0
Commodities less food & beverages	131.745	135.194	140.160	-5.3	6.4	3.7
Nondurables less food & beverages	167.072	173.694	183.253	-7.3	9.7	5.5
Durables	97.022	97.456	98.057	-1.7	1.1	0.6
Services	299.803	300.456	301.870	2.1	0.7	0.5
Special aggregate indexes						
All items less medical care	231.600	233.401	235.802	0.5	1.8	1.0
All items less shelter	214.533	216.374	219.281	-1.2	2.2	1.3
Commodities less food	136.014	139.383	144.221	-5.0	6.0	3.5
Nondurables	208.578	212.127	217.046	-2.1	4.1	2.3
Nondurables less food	172.880	179.152	188.180	-6.6	8.9	5.0
Services less rent of shelter ⁽²⁾	311.525	311.748	313.264	0.1	0.6	0.5
Services less medical care services	288.946	290.106	291.310	2.3	0.8	0.4
Energy	222.571	236.829	260.937	-12.6	17.2	10.2
All items less energy	242.822	243.487	244.373	1.7	0.6	0.4

Note: See footnotes at end of table.

Table 1. Consumer Price Index for All Urban Consumers (CPI-U): Indexes and percent changes for selected periods Los Angeles-Riverside-Orange County, CA (1982-84=100 unless otherwise noted) - Continued

Item and Group	Indexes			Percent change from-		
	Jan. 2015	Feb. 2015	Mar. 2015	Mar. 2014	Jan. 2015	Feb. 2015
All items less food and energy	242.003	242.806	243.957	1.5	0.8	0.5

Footnotes

(1) This index series was calculated using a Laspeyres estimator. All other item stratum index series were calculated using a geometric means estimator.

(2) Index is on a December 1982=100 base.

(3) Special index based on a substantially smaller sample.

(4) Indexes on a December 1993=100 base.

(5) Indexes on a December 1997=100 base.

- Data not available

NOTE: Index applies to a month as a whole, not to any specific date.