



For Release: Thursday, May 10, 2018

18-759-SAN

WESTERN INFORMATION OFFICE: San Francisco, Calif.

Technical information: (415) 625-2270 BLSinfoSF@bls.gov www.bls.gov/regions/west

Media contact: (415) 625-2270

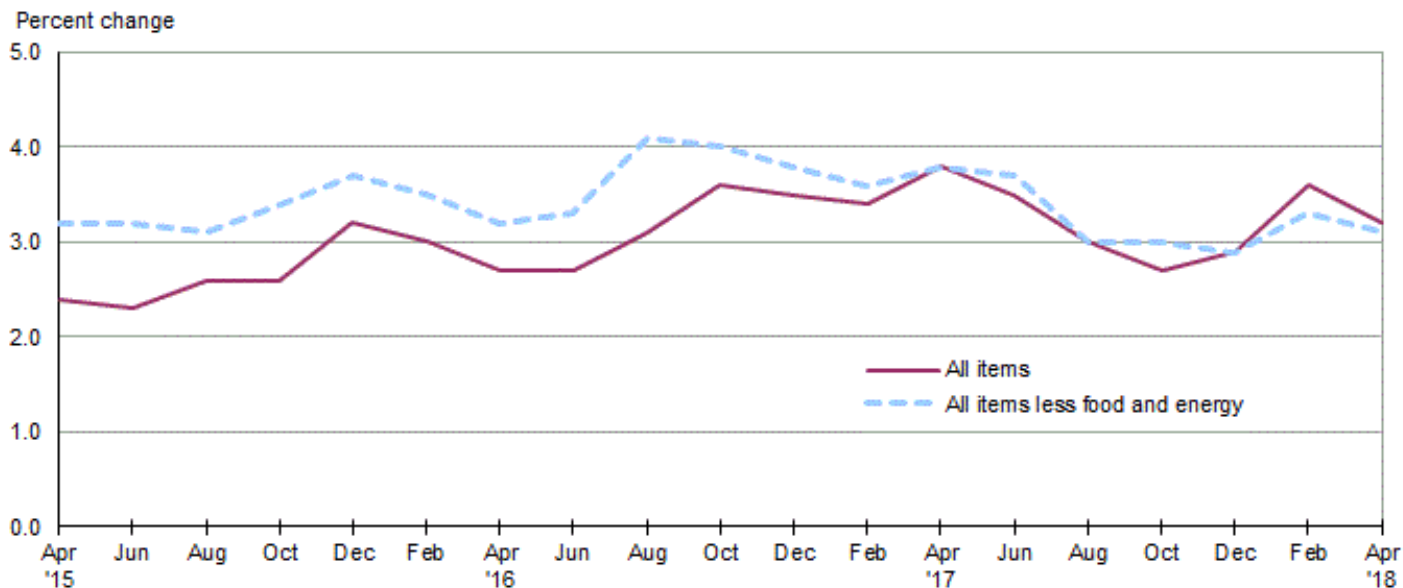
Consumer Price Index, San Francisco Area — April 2018

Area prices were up 0.8 percent over the past two months, up 3.2 percent from a year ago

Prices in the San Francisco area, as measured by the Consumer Price Index for All Urban Consumers (CPI-U), rose 0.8 percent for the two months ending in April 2018, the U.S. Bureau of Labor Statistics reported today. (See [table A.](#)) Assistant Commissioner for Regional Operations Richard Holden noted that the April increase was influenced by higher prices for shelter and gasoline. (Data in this report are not seasonally adjusted. Accordingly, month-to-month changes may reflect seasonal influences.)

Over the last 12 months, the CPI-U increased 3.2 percent. (See [chart 1](#) and [table A.](#)) Energy prices rose 9.8 percent, largely the result of an increase in the price of gasoline. The index for all items less food and energy advanced 3.1 percent over the year. (See [table 1.](#))

Chart 1. Over-the-year percent change in CPI-U, San Francisco, April 2015–April 2018



Source: U.S. Bureau of Labor Statistics.

Food

Food prices increased 0.3 percent for the two months ending in April. (See [table 1.](#)) Prices for food away from home advanced 0.9 percent, but prices for food at home declined 0.4 percent for the same period.

Over the year, food prices rose 1.7 percent. Prices for food away from home moved up 3.8 percent since a year ago, but prices for food at home moved down 0.4 percent.

Energy

The energy index increased 5.3 percent for the two months ending in April. The increase was mainly due to higher prices for gasoline (6.4 percent). Prices for natural gas service jumped 13.5 percent, and prices for electricity rose 0.2 percent for the same period.

Energy prices rose 9.8 percent over the year, largely due to higher prices for gasoline (18.1 percent). Prices paid for electricity rose 0.4 percent, but prices for natural gas service declined 1.0 percent during the past year.

All items less food and energy

The index for all items less food and energy increased 0.6 percent in the latest two-month period. Higher prices for household furnishings and operations (2.9 percent), other goods and services (1.2 percent), and shelter (0.5 percent) were partially offset by lower prices for recreation (-0.6 percent) and education and communication (-0.1 percent).

Over the year, the index for all items less food and energy advanced 3.1 percent. Components contributing to the increase included shelter (3.8 percent) and household furnishings and operations (3.7 percent). Partly offsetting the increases was a price decline in apparel (-5.4 percent).

Table A. San Francisco-Oakland-San Jose CPI-U bi-monthly and annual percent changes (not seasonally adjusted)

Month	2013		2014		2015		2016		2017		2018	
	Bi-monthly	Annual	Bi-monthly	Annual	Bi-monthly	Annual	Bi-monthly	Annual	Bi-monthly	Annual	Bi-monthly	Annual
February	1.3	2.4	1.2	2.4	1.0	2.5	0.9	3.0	0.8	3.4	1.4	3.6
April	0.8	2.4	1.2	2.8	1.1	2.4	0.7	2.7	1.1	3.8	0.8	3.2
June	0.5	2.6	0.7	3.0	0.6	2.3	0.6	2.7	0.3	3.5		
August	0.1	2.0	0.0	3.0	0.3	2.6	0.7	3.1	0.2	3.0		
October	0.2	1.6	0.5	3.2	0.4	2.6	0.9	3.6	0.6	2.7		
December	-0.4	2.6	-0.9	2.7	-0.3	3.2	-0.3	3.5	-0.1	2.9		

The June 2018 Consumer Price Index for the San Francisco-Oakland-Hayward is scheduled to be released on July 12, 2018.

Consumer Price Index Geographic Revision for 2018

In January 2018, BLS introduced a new geographic area sample for the Consumer Price Index (CPI). As part of the new sample, the index for this area was renamed. Additional information on the geographic revision is available at: www.bls.gov/cpi/additional-resources/geographic-revision-2018.htm.

Technical Note

The Consumer Price Index (CPI) is a measure of the average change in prices over time in a fixed market basket of goods and services. The Bureau of Labor Statistics publishes CPIs for two population groups: (1) a CPI for All Urban Consumers (CPI-U) which covers approximately 94 percent of the total population and (2) a CPI for Urban Wage Earners and Clerical Workers (CPI-W) which covers 28 percent of the total population. The CPI-U includes, in addition to wage earners and clerical workers, groups such as professional, managerial, and technical workers, the self-employed, short-term workers, the unemployed, and retirees and others not in the labor force.

The CPI is based on prices of food, clothing, shelter, and fuels, transportation fares, charges for doctors' and dentists' services, drugs, and the other goods and services that people buy for day-to-day living. Each month, prices are collected in 75 urban areas across the country from about 5,000 housing units and approximately 22,000 retail establishments--department stores, supermarkets, hospitals, filling stations, and other types of stores and service establishments. All taxes directly associated with the purchase and use of items are included in the index.

The index measures price changes from a designated reference date (1982-84) that equals 100.0. An increase of 16.5 percent, for example, is shown as 116.5. This change can also be expressed in dollars as follows: the price of a base period "market basket" of goods and services in the CPI has risen from \$10 in 1982-84 to \$11.65. For further details see the CPI home page on the Internet at www.bls.gov/cpi and the BLS Handbook of Methods, Chapter 17, The Consumer Price Index, available on the Internet at www.bls.gov/opub/hom/homch17_a.htm.

In calculating the index, price changes for the various items in each location are averaged together with weights that represent their importance in the spending of the appropriate population group. Local data are then combined to obtain a U.S. city average. Because the sample size of a local area is smaller, the local area index is subject to substantially more sampling and other measurement error than the national index. In addition, local indexes are not adjusted for seasonal influences. As a result, local area indexes show greater volatility than the national index, although their long-term trends are quite similar. **NOTE: Area indexes do not measure differences in the level of prices between cities; they only measure the average change in prices for each area since the base period.**

The San Francisco-Oakland-Hayward, CA. metropolitan area covered in this release is comprised of Alameda, Contra Costa, Marin, San Francisco, San Mateo Counties in the State of California.

Information in this release will be made available to sensory impaired individuals upon request. Voice phone: (202) 691-5200; Federal Relay Service: (800) 877-8339.

Table 1. Consumer Price Index for All Urban Consumers (CPI-U): Indexes and percent changes for selected periods San Francisco-Oakland-Hayward, CA (1982-84=100 unless otherwise noted)

Item and Group	Indexes			Percent change from-		
	Feb. 2018	Mar. 2018	Apr. 2018	Apr. 2017	Feb. 2018	Mar. 2018
Expenditure category						
All items	281.308	-	283.422	3.2	0.8	-
All items (1967=100)	864.818	-	871.318	-	-	-
Food and beverages	273.794	-	275.824	2.3	0.7	-
Food	273.196	-	274.054	1.7	0.3	-
Food at home	252.155	250.615	251.268	-0.4	-0.4	0.3
Cereals and bakery products	257.289	-	259.232	-	0.8	-
Meats, poultry, fish, and eggs	248.194	-	251.222	-	1.2	-
Dairy and related products	266.693	-	263.292	-	-1.3	-
Fruits and vegetables	332.725	-	327.194	-	-1.7	-
Nonalcoholic beverages and beverage materials(1)	206.068	-	201.298	-	-2.3	-
Other food at home	220.581	-	220.387	-	-0.1	-
Food away from home	298.714	-	301.409	3.8	0.9	-
Food away from home	298.714	-	301.409	3.8	0.9	-
Alcoholic beverages	286.864	-	298.802	7.9	4.2	-
Housing	331.779	-	334.450	3.6	0.8	-
Shelter	379.330	381.872	381.346	3.8	0.5	-0.1
Rent of primary residence(2)	430.929	436.318	437.317	5.7	1.5	0.2
Owners' equiv. rent of residences(2)(3)	408.860	409.935	409.806	3.2	0.2	0.0
Owners' equiv. rent of primary residence(1)(2)	408.860	409.935	409.806	3.2	0.2	0.0
Fuels and utilities	389.461	-	398.564	1.4	2.3	-
Household energy	339.487	343.433	351.500	-0.5	3.5	2.3
Energy services(2)	340.466	344.294	352.377	-0.7	3.5	2.3
Electricity(2)	362.520	375.081	363.126	0.4	0.2	-3.2
Utility (piped) gas service(2)	281.249	264.655	319.210	-1.0	13.5	20.6
Household furnishings and operations	135.132	-	139.086	3.7	2.9	-
Apparel	113.616	-	113.888	-5.4	0.2	-
Transportation	200.283	-	203.714	6.4	1.7	-
Private transportation	192.922	-	197.556	8.5	2.4	-
New and used motor vehicles(4)	96.158	-	96.712	-	0.6	-
New vehicles(1)	160.274	-	160.814	-	0.3	-
Used cars and trucks(1)	250.728	-	253.391	-	1.1	-
Motor fuel	248.958	254.538	264.816	18.1	6.4	4.0
Gasoline (all types)	247.991	253.615	263.890	18.1	6.4	4.1
Gasoline, unleaded regular(4)	248.183	253.839	264.259	18.3	6.5	4.1
Gasoline, unleaded midgrade(4)(5)	231.380	235.458	243.744	17.4	5.3	3.5
Gasoline, unleaded premium(4)	234.614	240.022	249.261	17.3	6.2	3.8
Motor vehicle insurance(1)	497.755	-	505.695	-	1.6	-
Medical care	500.434	-	504.092	2.6	0.7	-
Recreation(6)	115.910	-	115.162	1.8	-0.6	-
Education and communication(6)	142.944	-	142.854	2.3	-0.1	-
Tuition, other school fees, and child care(1) ..	1,650.322	-	1,660.883	-	0.6	-
Other goods and services	473.197	-	478.861	3.1	1.2	-
Commodity and service group						
All items	281.308	-	283.422	3.2	0.8	-
Commodities	187.162	-	189.611	2.4	1.3	-
Commodities less food & beverages	140.463	-	143.038	2.6	1.8	-
Nondurables less food & beverages	186.016	-	189.042	3.9	1.6	-
Durables	96.637	-	98.746	0.5	2.2	-
Services	359.709	-	361.570	3.5	0.5	-

Note: See footnotes at end of table.

Table 1. Consumer Price Index for All Urban Consumers (CPI-U): Indexes and percent changes for selected periods San Francisco-Oakland-Hayward, CA (1982-84=100 unless otherwise noted) - Continued

Item and Group	Indexes			Percent change from-		
	Feb. 2018	Mar. 2018	Apr. 2018	Apr. 2017	Feb. 2018	Mar. 2018
Special aggregate indexes						
All items less medical care	272.358	-	274.409	3.3	0.8	-
All items less shelter.....	240.742	-	242.950	2.7	0.9	-
Commodities less food	146.549	-	149.553	3.0	2.0	-
Nondurables	231.165	-	233.707	2.9	1.1	-
Nondurables less food.....	193.403	-	197.238	4.3	2.0	-
Services less rent of shelter(3).....	350.606	-	352.323	3.1	0.5	-
Services less medical care services.....	351.196	-	352.848	3.6	0.5	-
Energy	286.809	292.062	301.993	9.8	5.3	3.4
All items less energy	284.453	-	285.968	2.9	0.5	-
All items less food and energy	287.009	-	288.633	3.1	0.6	-

Footnotes

(1) Indexes on a December 1977=100 base.

(2) This index series was calculated using a Laspeyres estimator. All other item stratum index series were calculated using a geometric means estimator.

(3) Indexes on a December 1982=100 base.

(4) Special index based on a substantially smaller sample.

(5) Indexes on a December 1993=100 base.

(6) Indexes on a December 1997=100 base.

- Data not available

NOTE: Index applies to a month as a whole, not to any specific date.