



For Release: Thursday, July 11, 2019

19-1266-SAN

WESTERN INFORMATION OFFICE: San Francisco, Calif.

Technical information: (415) 625-2270 BLSinfoSF@bls.gov www.bls.gov/regions/west

Media contact: (415) 625-2270

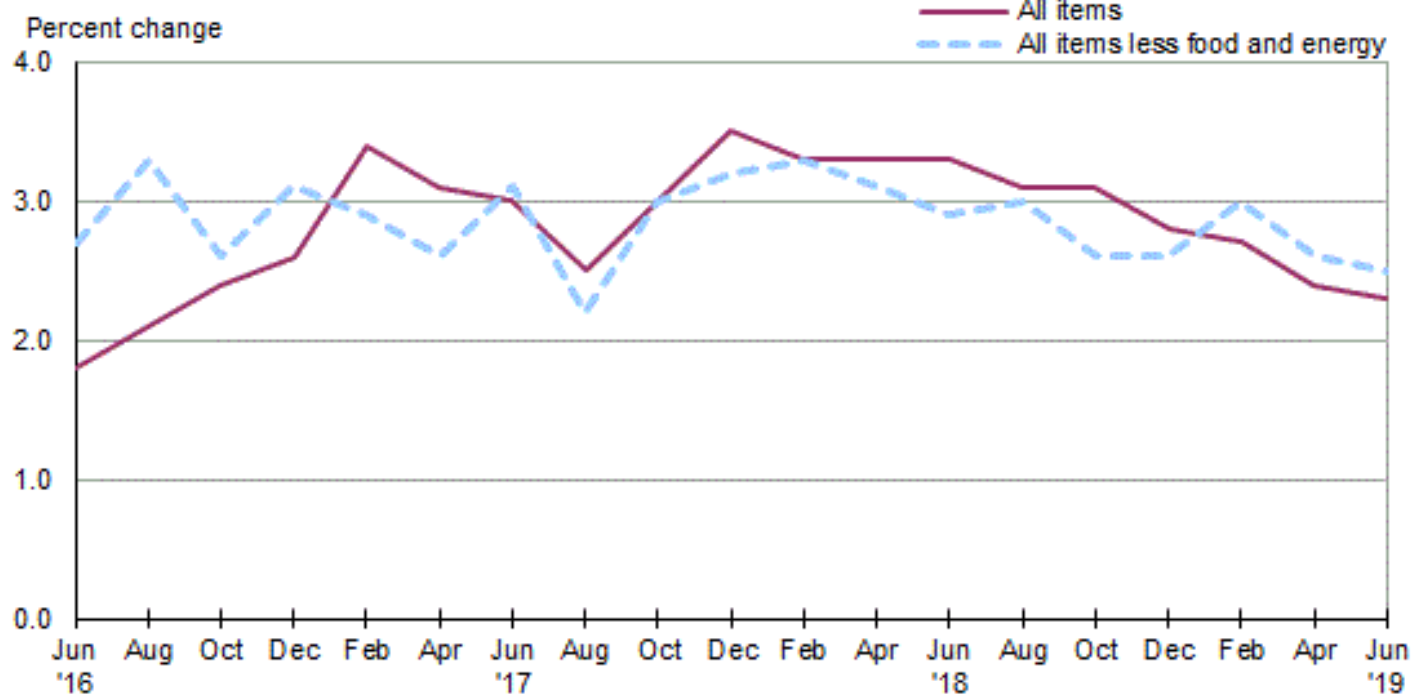
Consumer Price Index, Seattle area — June 2019

Area prices were up 0.7 percent over the past two months, up 2.3 percent from a year ago

Prices in the Seattle area, as measured by the Consumer Price Index for All Urban Consumers (CPI-U), advanced 0.7 percent for the two months ending in June 2019, the U.S. Bureau of Labor Statistics reported today. (See [table A](#).) Assistant Commissioner for Regional Operations Richard Holden noted that the June increase was influenced by higher prices for household furnishings and operations and education and communication. (Data in this report are not seasonally adjusted. Accordingly, month-to-month changes may reflect seasonal influences.)

Over the last 12 months, the CPI-U advanced 2.3 percent. (See [chart 1](#) and [table A](#).) Energy prices edged up 0.1 percent, largely the result of an increase in the price of gasoline. The index for all items less food and energy rose 2.5 percent over the year. (See [table 1](#).)

Chart 1. Over-the-year percent change in CPI-U, Seattle-Tacoma-Bellevue, WA, June 2016–June 2019



Source: U.S. Bureau of Labor Statistics.

Food

Food prices rose 0.5 percent for the two months ending in June. (See [table 1.](#)) Prices for food at home also rose 0.5 percent, and prices for food away from home increased 0.4 percent for the same period.

Over the year, food prices increased 2.0 percent. Prices for food away from home moved up 2.1 percent since a year ago, and prices for food at home rose 1.9 percent.

Energy

The energy index rose 0.8 percent for the two months ending in June. The increase was mainly due to higher prices for gasoline (1.8 percent). Prices for natural gas service decreased 1.8 percent, and prices for electricity declined 0.2 percent for the same period.

Energy prices edged up 0.1 percent over the year, largely due to higher prices for gasoline (0.7 percent). Prices paid for electricity rose 1.1 percent, but prices for natural gas service decreased 7.9 percent during the past year.

All items less food and energy

The index for all items less food and energy rose 0.7 percent in the latest two-month period. Higher prices for household furnishings and operations (8.4 percent) and education and communication (2.6 percent) were partially offset by lower prices for recreation (-1.2 percent) and new vehicles (-0.9 percent).

Over the year, the index for all items less food and energy rose 2.5 percent. Components contributing to the increase included household furnishings and operations (9.4 percent), apparel (5.2 percent), and shelter (3.1 percent). Partly offsetting the increases was a decline in the price of new vehicles (-8.1 percent).

Table A. Seattle-Tacoma-Bellevue, WA, CPI-U 2-month and 12-month percent changes, all items index, not seasonally adjusted

Month	2015		2016		2017		2018		2019	
	2-month	12-month	2-month	12-month	2-month	12-month	2-month	12-month	2-month	12-month
February	0.2	1.1	0.2	2.2	1.0	3.4	0.8	3.3	0.7	2.7
April	0.9	0.4	1.1	2.5	0.8	3.1	0.8	3.3	0.5	2.4
June	1.6	1.6	0.9	1.8	0.8	3.0	0.8	3.3	0.7	2.3
August	0.0	1.8	0.3	2.1	-0.2	2.5	-0.3	3.1		
October	-0.3	1.2	0.0	2.4	0.5	3.0	0.4	3.1		
December	-0.2	2.2	0.0	2.6	0.5	3.5	0.2	2.8		

The August 2019 Consumer Price Index for the Seattle-Tacoma-Bellevue area is scheduled to be released on September 12, 2019.

Consumer Price Index Geographic Revision for 2018

In January 2018, BLS introduced a new geographic area sample for the Consumer Price Index (CPI). As part of the new sample, the index for this area was renamed. Additional information on the geographic revision is available at: www.bls.gov/cpi/additional-resources/geographic-revision-2018.htm.

Technical Note

The Consumer Price Index (CPI) is a measure of the average change in prices over time in a fixed market basket of goods and services. The Bureau of Labor Statistics publishes CPIs for two population groups: (1) a CPI for All Urban Consumers (CPI-U) which covers approximately 94 percent of the total population and (2) a CPI for Urban Wage Earners and Clerical Workers (CPI-W) which covers 28 percent of the total population. The CPI-U includes, in addition to wage earners and clerical workers, groups such as professional, managerial, and technical workers, the self-employed, short-term workers, the unemployed, and retirees and others not in the labor force.

The CPI is based on prices of food, clothing, shelter, and fuels, transportation fares, charges for doctors' and dentists' services, drugs, and the other goods and services that people buy for day-to-day living. Each month, prices are collected in 75 urban areas across the country from about 5,000 housing units and approximately 22,000 retail establishments--department stores, supermarkets, hospitals, filling stations, and other types of stores and service establishments. All taxes directly associated with the purchase and use of items are included in the index.

The index measures price changes from a designated reference date (1982-84) that equals 100.0. An increase of 16.5 percent, for example, is shown as 116.5. This change can also be expressed in dollars as follows: the price of a base period "market basket" of goods and services in the CPI has risen from \$10 in 1982-84 to \$11.65. For further details see the CPI home page on the Internet at www.bls.gov/cpi and the BLS Handbook of Methods, Chapter 17, The Consumer Price Index, available on the Internet at www.bls.gov/opub/hom/homch17_a.htm.

In calculating the index, price changes for the various items in each location are averaged together with weights that represent their importance in the spending of the appropriate population group. Local data are then combined to obtain a U.S. city average. Because the sample size of a local area is smaller, the local area index is subject to substantially more sampling and other measurement error than the national index. In addition, local indexes are not adjusted for seasonal influences. As a result, local area indexes show greater volatility than the national index, although their long-term trends are quite similar. **NOTE:Area indexes do not measure differences in the level of prices between cities; they only measure the average change in prices for each area since the base period.**

The Seattle-Tacoma-Bellevue, WA. metropolitan area covered in this release is comprised of King, Pierce, and Snohomish Counties in the State of Washington.

Information in this release will be made available to sensory impaired individuals upon request. Voice phone: (202) 691-5200; Federal Relay Service: (800) 877-8339.

Table 1. Consumer Price Index for All Urban Consumers (CPI-U): Indexes and percent changes for selected periods Seattle-Tacoma-Bellevue, WA (1982-84=100 unless otherwise noted)

Item and Group	Indexes			Percent change from-		
	Apr. 2019	May 2019	Jun. 2019	Jun. 2018	Apr. 2019	May 2019
Expenditure category						
All items	276.765	-	278.631	2.3	0.7	-
All items (1967=100)	843.688	-	849.377	-	-	-
Food and beverages	274.083	-	275.571	2.2	0.5	-
Food	276.621	-	277.874	2.0	0.5	-
Food at home	253.812	256.405	254.986	1.9	0.5	-0.6
Cereals and bakery products	317.245	-	304.231	10.4	-4.1	-
Meats, poultry, fish, and eggs	211.457	-	217.192	5.6	2.7	-
Dairy and related products	212.898	-	212.438	-3.0	-0.2	-
Fruits and vegetables	404.213	-	406.015	1.4	0.4	-
Nonalcoholic beverages and beverage materials(1)	303.481	-	304.021	0.7	0.2	-
Other food at home	210.672	-	213.358	-1.3	1.3	-
Food away from home	311.597	-	312.973	2.1	0.4	-
Food away from home	311.597	-	312.973	2.1	0.4	-
Alcoholic beverages	243.450	-	247.778	4.8	1.8	-
Housing	326.987	-	329.145	3.4	0.7	-
Shelter	378.411	379.042	378.254	3.1	0.0	-0.2
Rent of primary residence(2)	387.464	383.266	384.479	2.6	-0.8	0.3
Owners' equiv. rent of residences(2)(3)	396.251	397.587	397.971	4.3	0.4	0.1
Owners' equiv. rent of primary residence(1)(2)	396.251	397.587	397.971	4.3	0.4	0.1
Fuels and utilities	272.578	-	271.612	0.2	-0.4	-
Household energy	244.460	242.558	242.143	-1.0	-0.9	-0.2
Energy services(2)	288.359	286.975	286.996	-0.6	-0.5	0.0
Electricity(2)	320.213	319.644	319.636	1.1	-0.2	0.0
Utility (piped) gas service(2)	151.718	148.913	148.993	-7.9	-1.8	0.1
Household furnishings and operations	171.427	-	185.770	9.4	8.4	-
Apparel	130.313	-	130.110	5.2	-0.2	-
Transportation	226.901	-	229.333	-2.8	1.1	-
Private transportation	238.682	-	240.238	-1.6	0.7	-
New and used motor vehicles(4)	98.488	-	98.852	-4.8	0.4	-
New vehicles(1)	196.026	-	194.280	-8.1	-0.9	-
Used cars and trucks(1)	321.639	-	323.281	2.0	0.5	-
Motor fuel	377.829	399.736	384.651	0.7	1.8	-3.8
Gasoline (all types)	385.795	408.255	392.759	0.7	1.8	-3.8
Gasoline, unleaded regular(4)	419.033	443.464	426.280	0.6	1.7	-3.9
Gasoline, unleaded midgrade(4)(5)	304.910	319.121	309.666	1.9	1.6	-3.0
Gasoline, unleaded premium(4)	352.888	374.074	360.967	1.5	2.3	-3.5
Motor vehicle insurance(1)	584.118	-	584.118	0.3	0.0	-
Medical care	405.557	-	406.516	1.9	0.2	-
Recreation(6)	99.473	-	98.301	1.5	-1.2	-
Education and communication(6)	136.262	-	139.860	5.2	2.6	-
Tuition, other school fees, and child care(1) ..	1,560.351	-	1,644.177	13.9	5.4	-
Other goods and services	412.268	-	418.440	2.7	1.5	-
Commodity and service group						
All items	276.765	-	278.631	2.3	0.7	-
Commodities	194.769	-	197.028	1.5	1.2	-
Commodities less food & beverages	155.995	-	158.470	1.1	1.6	-
Nondurables less food & beverages	196.125	-	196.679	1.2	0.3	-
Durables	116.985	-	120.995	1.0	3.4	-
Services	353.349	-	354.795	2.7	0.4	-

Note: See footnotes at end of table.

Table 1. Consumer Price Index for All Urban Consumers (CPI-U): Indexes and percent changes for selected periods Seattle-Tacoma-Bellevue, WA (1982-84=100 unless otherwise noted) - Continued

Item and Group	Indexes			Percent change from-		
	Apr. 2019	May 2019	Jun. 2019	Jun. 2018	Apr. 2019	May 2019
Special aggregate indexes						
All items less medical care	270.996	-	272.910	2.3	0.7	-
All items less shelter.....	237.885	-	240.558	1.8	1.1	-
Commodities less food	159.612	-	162.157	1.3	1.6	-
Nondurables	233.642	-	234.631	1.7	0.4	-
Nondurables less food.....	200.250	-	201.038	1.5	0.4	-
Services less rent of shelter(3).....	331.279	-	334.802	2.2	1.1	-
Services less medical care services.....	345.811	-	347.221	2.6	0.4	-
Energy	318.978	329.877	321.557	0.1	0.8	-2.5
All items less energy	277.434	-	279.283	2.4	0.7	-
All items less food and energy	277.826	-	279.775	2.5	0.7	-

Footnotes

(1) Indexes on a November 1977=100 base.

(2) This index series was calculated using a Laspeyres estimator. All other item stratum index series were calculated using a geometric means estimator.

(3) Indexes on a December 1982=100 base.

(4) Special index based on a substantially smaller sample.

(5) Indexes on a December 1993=100 base.

(6) Indexes on a December 1997=100 base.

- Data not available

NOTE: Index applies to a month as a whole, not to any specific date.