



For Release: Wednesday, March 11, 2020

20-427-SAN

WESTERN INFORMATION OFFICE: San Francisco, Calif.

Technical information: (415) 625-2270 BLSinfoSF@bls.gov www.bls.gov/regions/west

Media contact: (415) 625-2270

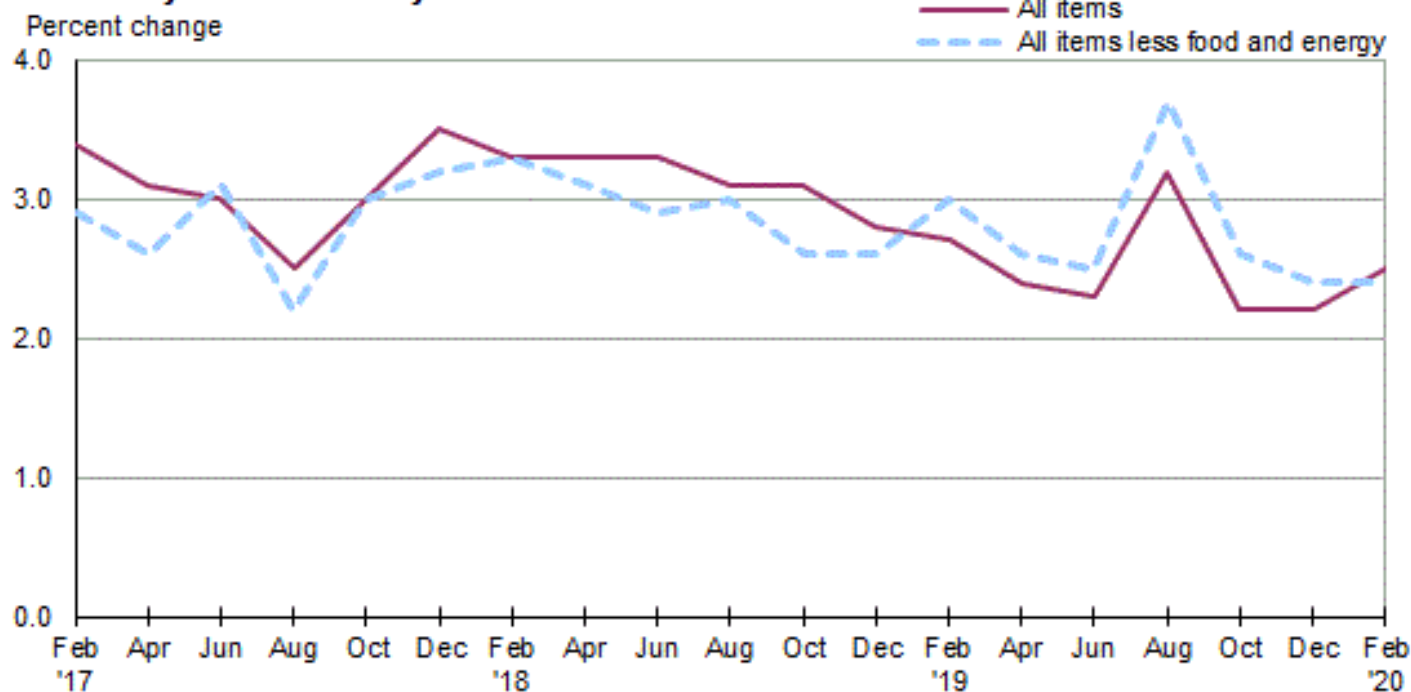
Consumer Price Index, Seattle area — February 2020

Area prices were up 1.0 percent over the past two months, up 2.5 percent from a year ago

Prices in the Seattle area, as measured by the Consumer Price Index for All Urban Consumers (CPI-U), advanced 1.0 percent for the two months ending in February 2020, the U.S. Bureau of Labor Statistics reported today. (See [table A](#).) Assistant Commissioner for Regional Operations Richard Holden noted that the February increase was influenced by higher prices for shelter and household furnishings and operations. (Data in this report are not seasonally adjusted. Accordingly, month-to-month changes may reflect seasonal influences.)

Over the last 12 months, the CPI-U increased 2.5 percent. (See [chart 1](#) and [table A](#).) The index for all items less food and energy advanced 2.4 percent over the year. Energy prices increased 5.5 percent, largely the result of an increase in the price of gasoline. Food prices rose 1.8 percent. (See [table 1](#).)

Chart 1. Over-the-year percent change in CPI-U, Seattle-Tacoma-Bellevue, WA, February 2017–February 2020



Source: U.S. Bureau of Labor Statistics.

Food

Food prices increased 1.0 percent for the two months ending in February. (See [table 1.](#)) Prices for food at home rose 1.7 percent, and prices for food away from home advanced 0.3 percent for the same period.

Over the year, food prices rose 1.8 percent. Prices for food away from home rose 3.9 percent since a year ago, and prices for food at home increased 0.2 percent.

Energy

The energy index decreased 1.9 percent for the two months ending in February. The decrease was mainly due to lower prices for gasoline (-3.9 percent). Prices for natural gas service were unchanged, while electricity prices rose 1.6 percent for the same period.

Energy prices increased 5.5 percent over the year, largely due to higher prices for gasoline (6.7 percent). Prices paid for natural gas service jumped 15.2 percent, and prices for electricity advanced 1.0 percent during the past year.

All items less food and energy

The index for all items less food and energy increased 1.1 percent in the latest two-month period. Higher prices for household furnishings and operations (9.5 percent) and shelter (1.2 percent) were partially offset by lower prices for recreation (-4.1 percent) and education and communication (-0.4 percent).

Over the year, the index for all items less food and energy advanced 2.4 percent. Components contributing to the increase included shelter (4.6 percent), education and communication (2.0 percent), and medical care (1.7 percent). Partly offsetting the increases were price decreases in apparel (-5.1 percent) and recreation (-1.8 percent).

Table A. Seattle-Tacoma-Bellevue, WA, CPI-U 2-month and 12-month percent changes, all items index, not seasonally adjusted

Month	2016		2017		2018		2019		2020	
	2-month	12-month	2-month	12-month	2-month	12-month	2-month	12-month	2-month	12-month
February	0.2	2.2	1.0	3.4	0.8	3.3	0.7	2.7	1.0	2.5
April	1.1	2.5	0.8	3.1	0.8	3.3	0.5	2.4		
June	0.9	1.8	0.8	3.0	0.8	3.3	0.7	2.3		
August	0.3	2.1	-0.2	2.5	-0.3	3.1	0.6	3.2		
October	0.0	2.4	0.5	3.0	0.4	3.1	-0.6	2.2		
December	0.0	2.6	0.5	3.5	0.2	2.8	0.3	2.2		

The April 2020 Consumer Price Index for the Seattle area is scheduled to be released on May 12, 2020.

Consumer Price Index Geographic Revision for 2018

In January 2018, BLS introduced a new geographic area sample for the Consumer Price Index (CPI). As part of the new sample, the index for this area was renamed. Additional information on the geographic revision is available at: www.bls.gov/cpi/additional-resources/geographic-revision-2018.htm.

Technical Note

The Consumer Price Index (CPI) is a measure of the average change in prices over time in a fixed market basket of goods and services. The Bureau of Labor Statistics publishes CPIs for two population groups: (1) a CPI for All Urban Consumers (CPI-U) which covers approximately 94 percent of the total population and (2) a CPI for Urban Wage Earners and Clerical Workers (CPI-W) which covers 28 percent of the total population. The CPI-U includes, in addition to wage earners and clerical workers, groups such as professional, managerial, and technical workers, the self-employed, short-term workers, the unemployed, and retirees and others not in the labor force.

The CPI is based on prices of food, clothing, shelter, and fuels, transportation fares, charges for doctors' and dentists' services, drugs, and the other goods and services that people buy for day-to-day living. Each month, prices are collected in 75 urban areas across the country from about 5,000 housing units and approximately 22,000 retail establishments--department stores, supermarkets, hospitals, filling stations, and other types of stores and service establishments. All taxes directly associated with the purchase and use of items are included in the index.

The index measures price changes from a designated reference date (1982-84) that equals 100.0. An increase of 16.5 percent, for example, is shown as 116.5. This change can also be expressed in dollars as follows: the price of a base period "market basket" of goods and services in the CPI has risen from \$10 in 1982-84 to \$11.65. For further details see the CPI home page on the Internet at www.bls.gov/cpi and the BLS Handbook of Methods, Chapter 17, The Consumer Price Index, available on the Internet at www.bls.gov/opub/hom/homch17_a.htm.

In calculating the index, price changes for the various items in each location are averaged together with weights that represent their importance in the spending of the appropriate population group. Local data are then combined to obtain a U.S. city average. Because the sample size of a local area is smaller, the local area index is subject to substantially more sampling and other measurement error than the national index. In addition, local indexes are not adjusted for seasonal influences. As a result, local area indexes show greater volatility than the national index, although their long-term trends are quite similar. **NOTE:Area indexes do not measure differences in the level of prices between cities; they only measure the average change in prices for each area since the base period.**

The Seattle-Tacoma-Bellevue, WA. metropolitan area covered in this release is comprised of King, Pierce, and Snohomish Counties in the State of Washington.

Information in this release will be made available to sensory impaired individuals upon request. Voice phone: (202) 691-5200; Federal Relay Service: (800) 877-8339.

Table 1. Consumer Price Index for All Urban Consumers (CPI-U): Indexes and percent changes for selected periods Seattle-Tacoma-Bellevue, WA (1982-84=100 unless otherwise noted)

Item and Group	Indexes			Percent change from-		
	Dec. 2019	Jan. 2020	Feb. 2020	Feb. 2019	Dec. 2019	Jan. 2020
Expenditure category						
All items.....	279.421	-	282.115	2.5	1.0	-
All items (1967=100).....	851.784	-	859.996	-	-	-
Food and beverages.....	277.735	-	280.295	1.8	0.9	-
Food.....	280.186	-	283.048	1.8	1.0	-
Food at home.....	253.181	254.758	257.367	0.2	1.7	1.0
Cereals and bakery products.....	302.970	-	304.120	0.2	0.4	-
Meats, poultry, fish, and eggs.....	210.592	-	218.083	3.4	3.6	-
Dairy and related products.....	226.934	-	225.360	4.6	-0.7	-
Fruits and vegetables.....	394.801	-	407.729	-1.7	3.3	-
Nonalcoholic beverages and beverage materials(1).....	295.329	-	314.902	2.1	6.6	-
Other food at home.....	214.756	-	212.268	-2.7	-1.2	-
Food away from home.....	321.504	-	322.472	3.9	0.3	-
Food away from home.....	321.504	-	322.472	3.9	0.3	-
Alcoholic beverages.....	248.147	-	248.019	1.9	-0.1	-
Housing.....	331.670	-	339.051	4.3	2.2	-
Shelter.....	385.480	388.035	390.166	4.6	1.2	0.5
Rent of primary residence(2).....	394.650	395.887	398.410	4.0	1.0	0.6
Owners' equiv. rent of residences(2)(3).....	408.981	410.256	411.441	4.9	0.6	0.3
Owners' equiv. rent of primary residence(1)(2).....	408.981	410.256	411.441	4.9	0.6	0.3
Fuels and utilities.....	272.428	-	278.520	3.7	2.2	-
Household energy.....	244.002	246.647	246.638	3.1	1.1	0.0
Energy services(2).....	288.149	291.553	291.553	3.4	1.2	0.0
Electricity(2).....	311.663	316.538	316.538	1.0	1.6	0.0
Utility (piped) gas service(2).....	169.458	169.458	169.458	15.2	0.0	0.0
Household furnishings and operations.....	168.742	-	184.744	-0.2	9.5	-
Apparel.....	125.011	-	124.623	-5.1	-0.3	-
Transportation.....	221.953	-	223.400	2.3	0.7	-
Private transportation.....	235.463	-	235.689	2.6	0.1	-
New and used motor vehicles(4).....	97.803	-	100.091	-0.1	2.3	-
New vehicles(1).....	194.724	-	202.632	0.4	4.1	-
Used cars and trucks(1).....	312.210	-	312.317	-2.2	0.0	-
Motor fuel.....	359.459	346.352	345.409	6.8	-3.9	-0.3
Gasoline (all types).....	366.383	352.845	351.963	6.7	-3.9	-0.2
Gasoline, unleaded regular(4).....	396.170	381.193	379.619	6.3	-4.2	-0.4
Gasoline, unleaded midgrade(4)(5).....	302.839	287.718	287.582	9.1	-5.0	0.0
Gasoline, unleaded premium(4).....	340.389	329.681	331.088	7.9	-2.7	0.4
Motor vehicle insurance(1).....	576.371	-	576.371	-1.3	0.0	-
Medical care.....	411.748	-	413.182	1.7	0.3	-
Recreation(6).....	101.751	-	97.615	-1.8	-4.1	-
Education and communication(6).....	142.460	-	141.822	2.0	-0.4	-
Tuition, other school fees, and child care(1) ..	1,696.176	-	1,696.176	8.8	0.0	-
Other goods and services.....	418.476	-	422.569	1.5	1.0	-
Commodity and service group						
All items.....	279.421	-	282.115	2.5	1.0	-
Commodities.....	192.419	-	196.308	0.3	2.0	-
Commodities less food & beverages.....	151.379	-	155.809	-0.6	2.9	-
Nondurables less food & beverages.....	189.792	-	190.103	-0.6	0.2	-
Durables.....	113.970	-	121.347	-0.9	6.5	-
Services.....	360.917	-	362.291	3.6	0.4	-

Note: See footnotes at end of table.

Table 1. Consumer Price Index for All Urban Consumers (CPI-U): Indexes and percent changes for selected periods Seattle-Tacoma-Bellevue, WA (1982-84=100 unless otherwise noted) - Continued

Item and Group	Indexes			Percent change from-		
	Dec. 2019	Jan. 2020	Feb. 2020	Feb. 2019	Dec. 2019	Jan. 2020
Special aggregate indexes						
All items less medical care	273.484	-	276.244	2.5	1.0	-
All items less shelter.....	238.811	-	240.777	1.2	0.8	-
Commodities less food	155.237	-	159.452	-0.6	2.7	-
Nondurables	231.864	-	233.290	0.7	0.6	-
Nondurables less food.....	194.548	-	194.817	-0.4	0.1	-
Services less rent of shelter(3).....	339.244	-	336.992	2.3	-0.7	-
Services less medical care services.....	353.312	-	354.597	3.7	0.4	-
Energy	308.868	303.492	303.003	5.5	-1.9	-0.2
All items less energy	280.772	-	283.884	2.3	1.1	-
All items less food and energy	281.128	-	284.288	2.4	1.1	-

Footnotes

(1) Indexes on a November 1977=100 base.

(2) This index series was calculated using a Laspeyres estimator. All other item stratum index series were calculated using a geometric means estimator.

(3) Indexes on a December 1982=100 base.

(4) Special index based on a substantially smaller sample.

(5) Indexes on a December 1993=100 base.

(6) Indexes on a December 1997=100 base.

- Data not available

NOTE: Index applies to a month as a whole, not to any specific date.