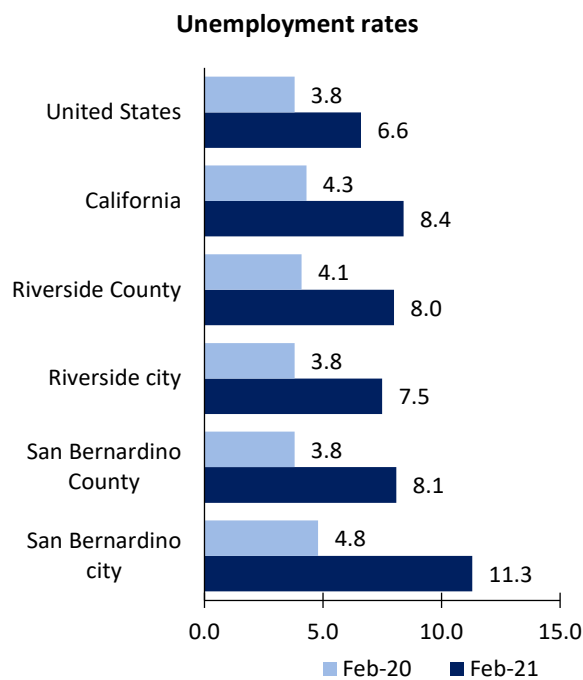


Riverside Area Economic Summary

Updated April 08, 2021

This summary presents a sampling of economic information for the area; supplemental data are provided for regions and the nation. Subjects include **unemployment, employment, wages, prices, spending, and benefits**. All data are not seasonally adjusted and some may be subject to revision. Area definitions may differ by subject. For more area summaries and geographic definitions, see www.bls.gov/regions/economic-summaries.htm.

Unemployment rates for the nation and selected areas



Source: U.S. BLS, Local Area Unemployment Statistics.

Average weekly wages for all industries by county

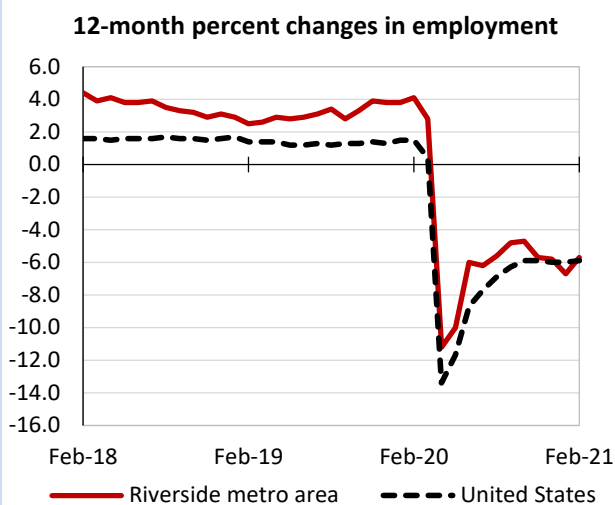
Riverside metro area, third quarter 2020

(U.S. = \$1,173; Area = \$993)



Source: U.S. BLS, Quarterly Census of Employment and Wages.

Over-the-year changes in employment on nonfarm payrolls and employment by major industry sector



Source: U.S. BLS, Current Employment Statistics.

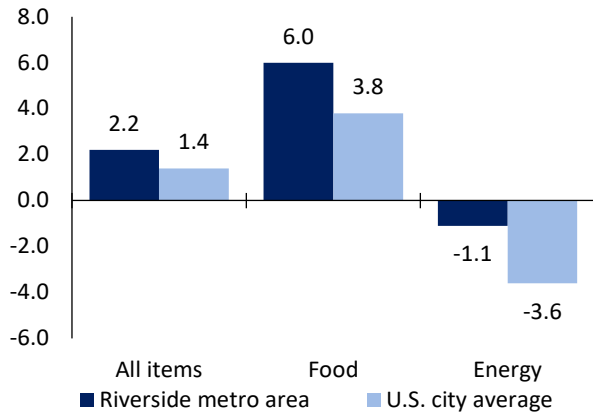
| Riverside metro area employment (number in thousands) | Feb. 2021 | Change from Feb. 2020 to Feb. 2021 | |
|--|-----------|------------------------------------|---------|
| | | Number | Percent |
| Total nonfarm | 1,496.5 | -90.6 | -5.7 |
| Mining and logging | 1.2 | -0.1 | -7.7 |
| Construction | 108.4 | -0.5 | -0.5 |
| Manufacturing | 91.0 | -9.1 | -9.1 |
| Trade, transportation, and utilities | 423.1 | 20.3 | 5.0 |
| Information | 8.7 | -2.6 | -23.0 |
| Financial activities | 42.4 | -3.5 | -7.6 |
| Professional and business services | 155.3 | -8.9 | -5.4 |
| Education and health services | 254.0 | -5.6 | -2.2 |
| Leisure and hospitality | 131.4 | -47.7 | -26.6 |
| Other services | 38.1 | -10.0 | -20.8 |
| Government | 242.9 | -22.9 | -8.6 |

Source: U.S. BLS, Current Employment Statistics.



Over-the-year change in the prices paid by urban consumers for selected categories

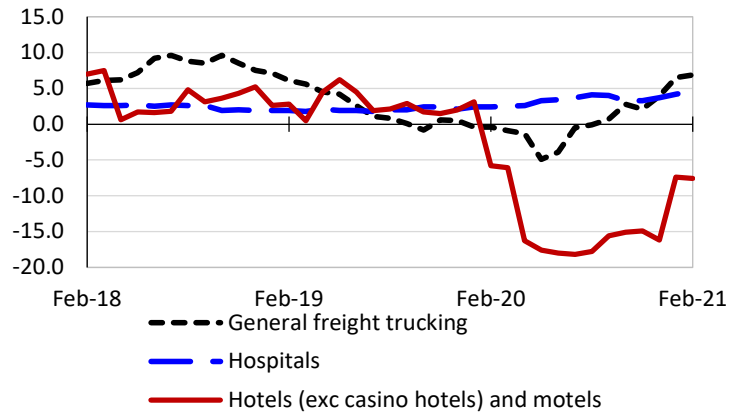
12-month percent change in CPI-U, January 2021



Source: U.S. BLS, Consumer Price Index.

Over-the-year changes in the selling prices received by producers for selected industries nationwide

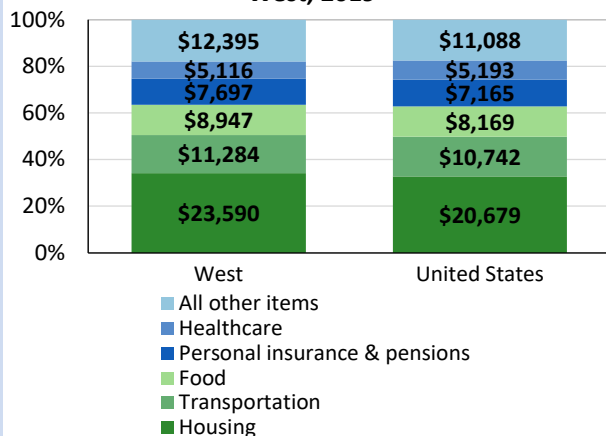
12-month percent changes in PPI



Source: U.S. BLS, Producer Price Index.

Average annual spending and percent distribution for selected categories

Average annual expenditures, United States and West, 2019



Source: U.S. BLS, Consumer Expenditure Survey.

Average hourly wages for selected occupations

| Occupation | Riverside metro area | United States |
|--------------------------|----------------------|---------------|
| All occupations | \$25.79 | \$27.07 |
| Human resources managers | 57.91 | 64.70 |
| Registered nurses | 52.80 | 38.47 |
| Accountants and auditors | 36.22 | 39.26 |
| Chefs and head cooks | 33.21 | 28.24 |
| Electricians | 26.51 | 29.59 |
| Construction laborers | 24.28 | 20.67 |

Source: U.S. BLS, Occupational Employment Statistics, May 2020.

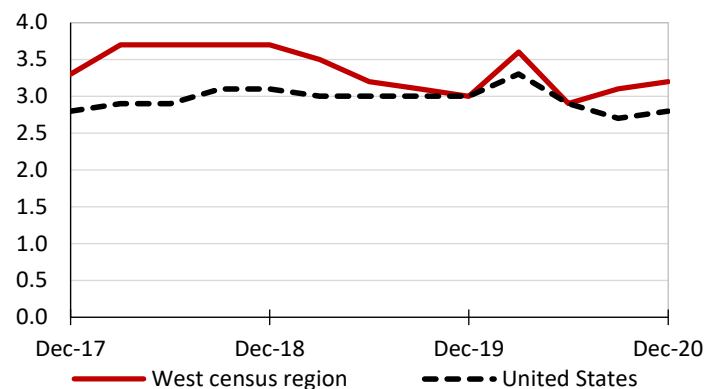
Employer costs per hour worked for wages and selected employee benefits by geographic division

| Private industry, December 2020 | West census region | United States |
|---------------------------------|--------------------|---------------|
| Total compensation | \$40.19 | \$36.23 |
| Wages and salaries | 28.28 | 25.48 |
| Total benefits | 11.91 | 10.74 |
| Paid leave | 3.04 | 2.69 |
| Vacation | 1.53 | 1.38 |
| Supplemental pay | 1.28 | 1.25 |
| Insurance | 3.12 | 2.81 |
| Retirement and savings | 1.33 | 1.25 |
| Legally required benefits | 3.14 | 2.75 |

Source: U.S. BLS, Employer Costs for Employee Compensation.

Over-the-year changes in wages and salaries

12-month percent changes in ECI



Source: U.S. BLS, Employment Cost Index.

