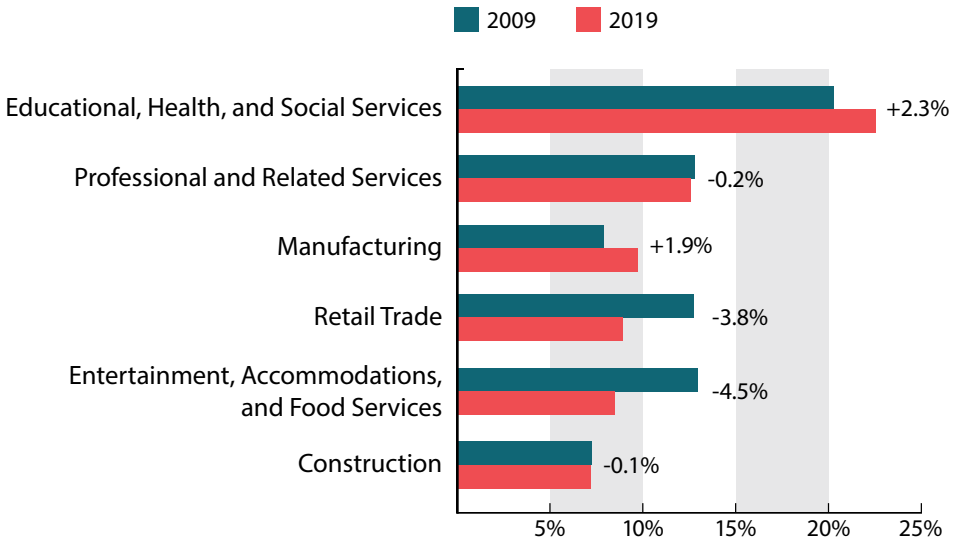


# WHY YOUR PARTICIPATION MATTERS



## Employment of the NLSY97 cohort shifted significantly among job sectors.

The percent of individuals working in the *Education, Health, and Social Services* and *Manufacturing* sectors increased from 2009 to 2019, while the percent working in the *Retail Trade* and *Entertainment, Accommodations, and Food Services* sectors decreased.<sup>1</sup>



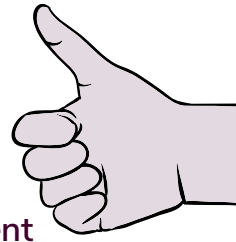
Employment in the top six job sectors decreased from 74 percent to 70 percent in a 10-year period.

<sup>1</sup> Bureau of Labor Statistics, U.S. Department of Labor. National Longitudinal Survey of Youth 1997 cohort, 2009-2019 (rounds 13-19).

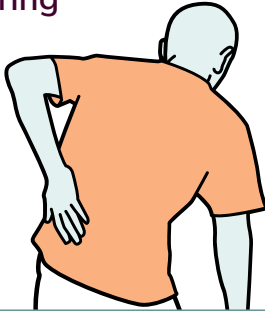


# Findings about the **NLSY 97** labor force

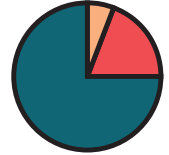
NLSY97 participants who **reported liking their job very much or fairly well** increased from 69 percent to 79 percent in a 10-year period.<sup>2</sup>



**Over 25 percent** of individuals reporting a lot of chronic pain by age 29 **left the labor force within 15 months** of being surveyed about pain interfering with their ability to work.<sup>3</sup>



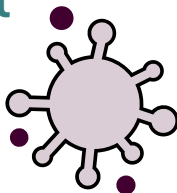
From ages 18 to 34, individuals were generally **employed 75 percent of weeks**, unemployed (without a job but seeking work) 6 percent of weeks, and neither working nor seeking work 19 percent of weeks.<sup>4</sup>



Men and women with a bachelor's degree and

higher were **less likely to experience employment disruptions**

during the COVID-19 pandemic.<sup>5</sup>



- 2 Bureau of Labor Statistics, U.S. Department of Labor. National Longitudinal Survey of Youth 1997 cohort, 2009-2019 (rounds 13-19).
- 3 Anand Pooleri et al. "Pain interference in young adulthood and work participation." [https://journals.lww.com/pain/Fulltext/9900/Pain\\_interference\\_in\\_young\\_adulthood\\_and\\_work.168.aspx](https://journals.lww.com/pain/Fulltext/9900/Pain_interference_in_young_adulthood_and_work.168.aspx)
- 4 Bureau of Labor Statistics, U.S. Department of Labor. "Labor Market Experience, Education, Partner Status, and Health for those Born 1980-1984 Summary." <https://www.bls.gov/news.release/nlsyth.nr0.htm#>
- 5 Alison Aughinbaugh and Donna S. Rothstein. "How did employment change during the COVID-19 pandemic? Evidence from a new BLS survey supplement." <https://www.bls.gov/opub/btn/volume-11/how-did-employment-change-during-the-covid-19-pandemic.htm>