

American Time Use Survey (ATUS) Data Dictionary:

2003-13 Interview Data

Variables collected in ATUS

July 2014

Important Information about the ATUS Data Dictionary

Introduction

The American Time Use Survey (ATUS) is sponsored by the Bureau of Labor Statistics and conducted by the U.S. Census Bureau. The purpose of this document is to provide information about the variables available on six multi-year ATUS data files: the Respondent file, the Roster file, the Activity file, the Who file, the Eldercare Respondent file, and the Activity Summary file. These files contain information collected and assigned in the 2003 to 2013 ATUS interviews. This data dictionary differs from individual year data dictionaries because it describes files that have data from multiple years.

This data dictionary lists all the variables available on these multi-year files and their valid values. It also provides directions on how to read the data dictionary.

Three additional data dictionaries describe other ATUS data files:

- **ATUS-CPS Data Dictionary:** Describes the variables available on the ATUS-CPS file as well as some variables on the Activity Summary file. The ATUS-CPS file contains data from the Current Population Survey (CPS) for persons selected to be surveyed for the ATUS and for members of their households. (The information on the ATUS-CPS file was collected two to five months before the ATUS interview and in some cases was out of date at the time the ATUS was conducted.) This dictionary is available for both multi-year and single-year ATUS-CPS data files.
- **ATUS Survey Methodology Data Dictionary:** Describes the variables available on the single-year Case History and Call History files. This data dictionary is only available for single-year Case History and Call History files because there are no multi-year Case History and Call History files.
- **Trips Data Dictionary:** Starting in 2011, the trips questions were replaced by the eldercare questions. The data dictionary describes the variables on the Trips files, which are available for the years, 2005-10. This data dictionary is only available for single-year Trips files because there are no multi-year Trips files.

These additional single- and multi-year data dictionaries are available on the ATUS Web site at www.bls.gov/tus/dictionaries.htm.

ATUS Interview Data Files

The following six multi-year data files include data available from the ATUS interviews.

1. 2003-13 ATUS Respondent File

This file contains case-specific variables collected in all currently available years of the ATUS (that is, variables for which there is one value for each respondent). These include, for example, labor force and earnings information, total time providing secondary childcare, and ATUS statistical weights. The ATUS statistical weights variable (TUFNWGTP) was developed using the 2006 weighting method. For more information about ATUS statistical weights, why researchers should use them, and details about the ATUS weighting methods, see the ATUS User's Guide (www.bls.gov/tus/atususersguide.pdf).

There is one record for each ATUS respondent.

Below is a simplified example. The TUCASEID identifies each household, and TULINENO identifies each individual within the household. The example contains responses from five individuals; note that the respondent always has TULINENO=1. In the example, each respondent has corresponding values denoting school enrollment (TESCHENR), labor force status (TELFs), and total nonwork-related time spent alone (TRTALONE). The actual ATUS Respondent file contains many more variables as well as many more lines.

| TUCASEID | TULINENO | TESCHENR | TELFs | TRTALONE |
|----------------|----------|----------|-------|----------|
| 20130101020210 | 1 | 1 | 1 | 40 |
| 20130101020211 | 1 | 1 | 1 | 350 |
| 20130101020212 | 1 | 1 | 5 | 0 |
| 20130101020213 | 1 | 2 | 5 | 556 |
| 20130101020214 | 1 | 1 | 4 | 100 |

2. 2003-13 ATUS Roster File

This file contains information on the age, sex, and each household member's relationship to the ATUS respondent. The same information is also included for the respondent's own nonhousehold children under 18.

There is one record for each individual in the respondent's household (including the respondent's own nonhousehold children under 18).

A simplified example appears below. The TUCASEID identifies each household, and the TULINENO identifies each individual in the household. In the example below, TUCASEID 20130101020210 has three persons residing in the household, and TUCASEID 20130101020211 and TUCASEID 20130101020212 each have one person. The actual ATUS Roster file contains more variables and many additional lines.

| TUCASEID | TULINENO | TERRP | TESEX | TEAGE |
|----------------|----------|-------|-------|-------|
| 20130101020210 | 1 | 18 | 2 | 42 |
| 20130101020210 | 2 | 20 | 1 | 45 |
| 20130101020210 | 3 | 22 | 1 | 11 |
| 20130101020211 | 1 | 18 | 1 | 65 |
| 20130101020212 | 1 | 18 | 2 | 21 |

3. 2003-13 ATUS Activity File

This file includes activity-level information collected in ATUS, including activity code, location, duration, activity start and stop times, and whether respondents had a child under 13 in their care during the activity. Location (or “where”) information is not collected for some selected activities (such as sleeping and grooming); a value that indicates the activity was “out of universe” for the “where” question (-1) is filled in these situations. There is one record for each activity.

A simplified example of the ATUS Activity file appears below. This is an illustration of part of one respondent's day. Because only one person is interviewed per household, each TUCASEID on the Activity file identifies a respondent. Each activity is identified by an activity number (TUACTIONITY_N). The ATUS Activity file contains more variables describing each activity as well as many more lines than does the example below. Due to changes made to the activity lexicons in the early years of the ATUS, activity codes appear on the 2003-13 Activity file that do not appear on the single-year Activity files. A new 2003-13 Activity Coding lexicon is available at www.bls.gov/tus/lexiconnoex0313.pdf with codes that appear on the 2003-13 Activity file.

| TUCASEID | TUACTIONITY_N | TUSTARTTIM | TUSTOPTIME |
|----------------|---------------|------------|------------|
| 20130101020210 | 1 | 04:00:00 | 07:00:00 |
| 20130101020210 | 2 | 07:00:00 | 07:30:00 |
| 20130101020210 | 3 | 07:30:00 | 08:00:00 |
| 20130101020210 | 4 | 08:00:00 | 12:00:00 |
| 20130101020210 | 5 | 12:00:00 | 13:30:00 |
| 20130101020210 | 6 | 13:30:00 | 17:30:00 |
| 20130101020210 | 7 | 17:30:00 | 18:00:00 |
| 20130101020210 | 8 | 18:00:00 | 19:00:00 |
| 20130101020210 | 9 | 19:00:00 | 21:00:00 |
| 20130101020210 | 10 | 21:00:00 | 04:00:00 |

4. 2003-13 ATUS Who File

This file includes codes that indicate who was present during each activity.

There is one record for each “who” code reported. Therefore, there will be one record for activities done alone and multiple records for activities with multiple people present. For some activities, no “who” codes are collected (such as sleeping and grooming in all years, and working in 2003-09); a value that indicates the activity was “out of universe” for the “who” question (-1) is filled in these situations.

A simplified example appears below. In the first activity (TUACTIONITY_N = 1), no “who” code information was collected because of the associated activity code. Only one person was with the respondent during the second activity, so there is one line for TUACTIONITY_N = 2. Three people were with the respondent during the third activity, so there are three lines for TUACTIONITY_N = 3. Two of those (TUWHO_CODE = 20 and 22) are members of the respondent's household and can be linked to the Roster file using TUCASEID and TULINENO. The third (TUWHO_CODE = 51) is not a member of the respondent's household and thus does not have a positive value for TULINENO.

The actual ATUS Who file contains more variables for each line as well as many additional lines than the example below.

| TUCASEID | TUACTIVITY_N | TUWHO_CODE | TULINENO |
|----------------|--------------|------------|----------|
| 20130101020210 | 1 | -1 | -1 |
| 20130101020210 | 2 | 22 | 3 |
| 20130101020210 | 3 | 20 | 2 |
| 20130101020210 | 3 | 22 | 3 |
| 20130101020210 | 3 | 51 | -1 |

5. 2011-13 ATUS Eldercare Roster File (introduced in 2011)

The ATUS Eldercare Roster file contains information about people for whom the respondent provided care. If the respondent indicated that she had provided eldercare more than once, during the past 3 to 4 months, additional information about each eldercare recipient is collected. (The time frame varied slightly by respondent because the question asked about care provided between the 1st of a reference month and the interview day.) There is one record for each recipient, up to a maximum of 5 records for each respondent. Information about the relationship of the recipient to the respondent, the age of the recipient, and the duration that care had been provided appear on the file.

A simplified example of the ATUS Eldercare Roster file appears below. The TUCASEID identifies each respondent providing eldercare, and the TULINENO identifies recipients in the household. A value of -1 for TULINENO indicates that the eldercare recipient does not live in the household. In the example below, TUCASEID 20130101020210 provided care to two persons not living in the household, TUCASEID 20130101020211 provided care to one person, who does live in the household, and TUCASEID 20130101020215 and TUCASEID 20130101020218 each provided care to one person. The actual ATUS Eldercare Roster file contains more variables and many additional lines.

| TUCASEID | TULINENO | TEELWHO | TEAGE_EC | TEELDUR |
|----------------|----------|---------|----------|---------|
| 20130101020210 | -1 | 33 | 76 | 4 |
| 20130101020210 | -1 | 34 | 80 | 4 |
| 20130101020211 | 2 | 20 | 72 | 4 |
| 20130101020215 | -1 | 46 | 88 | 3 |
| 20130101020218 | -1 | 55 | 65 | 2 |

6. 2003-13 ATUS Activity Summary File

The ATUS Activity Summary file contains information about the total number of minutes each respondent spent doing each activity. The file also includes selected variables from the ATUS Respondent, ATUS Roster, and ATUS-CPS files. **The Activity Summary file contains variables not described in this data dictionary. Variables beginning with a lower-case “t” correspond to specific activity codes; definitions for each activity code can be found in the 2003-13 Activity Lexicon (www.bls.gov/tus/lexiconnoex0313.pdf).**

There is one record for each ATUS respondent.

A simplified example of the ATUS Activity Summary file appears below. The variable TUCASEID is the unique identifier for each respondent and the variable TEAGE, which also appears on the ATUS Roster file, shows each respondent’s age. The variable t010101 contains the total number of minutes each respondent spent doing activity 010101, "sleeping"; the variable t010102 contains the total number of minutes each respondent spent doing activity 010102, "sleeplessness."

The ATUS Activity Summary file contains more variables describing each activity as well as many more lines than the example below.

| TUCASEID | TEAGE | t010101 | t010102 |
|----------------|-------|---------|---------|
| 20130101020210 | 26 | 480 | 0 |
| 20130101020211 | 53 | 430 | 30 |
| 20130101020212 | 76 | 457 | 0 |
| 20130101020213 | 16 | 600 | 0 |

Valid Values

Each variable has a number of valid values or a range of valid values. For example, the variable TESEX has two valid values: 1 for male and 2 for female. The variable TEAGE, on the other hand, has a range of valid values – any entry between 0 and 85 (except 81 through 84) is considered valid. Individual valid values or a range of valid values are listed under each variable in the data dictionary. A few variables have so many valid values that they are not included in the data dictionary; instead, they are provided in an appendix or a separate document. (References to these are included as a “Note” under the relevant variables in the data dictionary.) One example of such a variable is TEIO1ICD, which identifies the industry code of the respondent’s main job.

Many ATUS variables have the following possible valid values:

| Value | Description |
|-------|-------------|
| -1 | Blank |
| -2 | Don’t know |
| -3 | Refused |

Because so many variables have these possible values, they are not shown as valid entries for each variable.

TUCASEID, the primary identification number for ATUS, does not have either a list of valid values or a range of valid values.

ATUS Naming Conventions and Definitions

ATUS variables are named according to specified rules. Variables with a first character of “T” (for time use) were collected or created through the ATUS interview. Variables with any other first character (most often “P”, “G”, or “H”) were collected or created through the final CPS interview (conducted two to five months prior to the ATUS interview). All of the variables on the ATUS interview data files described in this dictionary begin with “T.”

The second and third characters of the name identify the type of variable, and the remaining characters consist of a descriptive name. The rules regarding the first two or three characters are described in the table below (note that the variables on the Activity Summary file that start with a lowercase “t” do not follow these rules):

| Abbreviation | Variable Type | Definition |
|--------------|-------------------|---|
| U | Unedited Variable | An unedited variable generally is produced by the Computer Assisted Telephone Interview (CATI) instrument, either collected or assigned during the interview. There are a few unedited variables that are computed by the processing system, such as the ATUS final weight (TUFNWGTP). |
| E | Edited Variable | An edited variable is one that has gone through an editing process (a process checking for consistency). Values of edited variables are almost always equal to values of the corresponding unedited variables. Data differ when a value is allocated or imputed by the processing system based on allocation rules specified in CPS or ATUS processing. Allocations are typically performed when the unedited variable contains a value of blank, "don't know," or "refused." An edited version of a variable exists only if that variable goes through an editing process. If there are no edits for a variable, then only an unedited version of that variable exists. |
| R | Recode | A recode is a variable calculated by the processing system from a combination of other variables on the file. For example, TRMJOCC1 is the major occupation code for the respondent's main job; this is not a response to a question but rather a variable that summarizes (or “groups”) the more finely detailed occupation variable TEIO1OCD. (Note that variables with second and third characters of “RT” are summary variables.) |
| RT | Summary Variable | These variables summarize the amount of time respondents spent with other people or did selected activities. For example, TRTALONE gives the total amount of nonwork-related time the respondent spent alone on the diary day. Variables that summarize the amount of time respondents spent with other people rely on “who” code information and therefore do not include activities for which no “who” code information was collected, such as sleeping. |
| T | Topcode Flag | These variables indicate whether another variable has been topcoded, or given a maximum value. The three topcode variables on the ATUS interview data files all relate to earnings. |

Using these rules, variables can be more readily understood based on their names. For example, the variable TEAGE can be broken down as follows:

- The first character “T” indicates that this variable was collected or created through the ATUS interviews
- The second character “E” indicates that this variable went through an editing process
- The final part of the variable name, “AGE,” is descriptive

Some questions asked in the ATUS interview allow for more than one response. For such multiple entry questions, there is a separate variable for each possible response. Each variable has the same descriptive name but a different (sequential) number. For example, respondents can provide up to six answers to the question “You said you have been trying to find work – how did you go about looking?” The variable names are TULKDK1, TULKDK2, TULKDK3, etc.

Not all ATUS variables are on the files. When there is an edited variable, the corresponding unedited variable is usually omitted from the files. This is typically done to protect the confidentiality of ATUS respondents as required by law. If an unedited variable is included on the files, then an edited version does not exist and the unedited version cannot be used to identify individual respondents. In addition, some variables available on the single-year data files are not available on the 2003-13 files as a way to keep file sizes manageable. These variables are listed in Appendices B, C, D, E and F.

Allocation Flags

The 2003-13 ATUS Interview files contain two allocation flags: TRHERNAL and TRWERNAL. These allocation flags were included because of the frequency with which earnings variables are allocated in the ATUS. All other allocation flags appear only on the single-year ATUS Interview files and *not* on the multi-year files. For more information on these allocation flags, please see the single-year Interview data dictionaries, available online at www.bls.gov/tus/dictionaries.htm.

Edited Universe

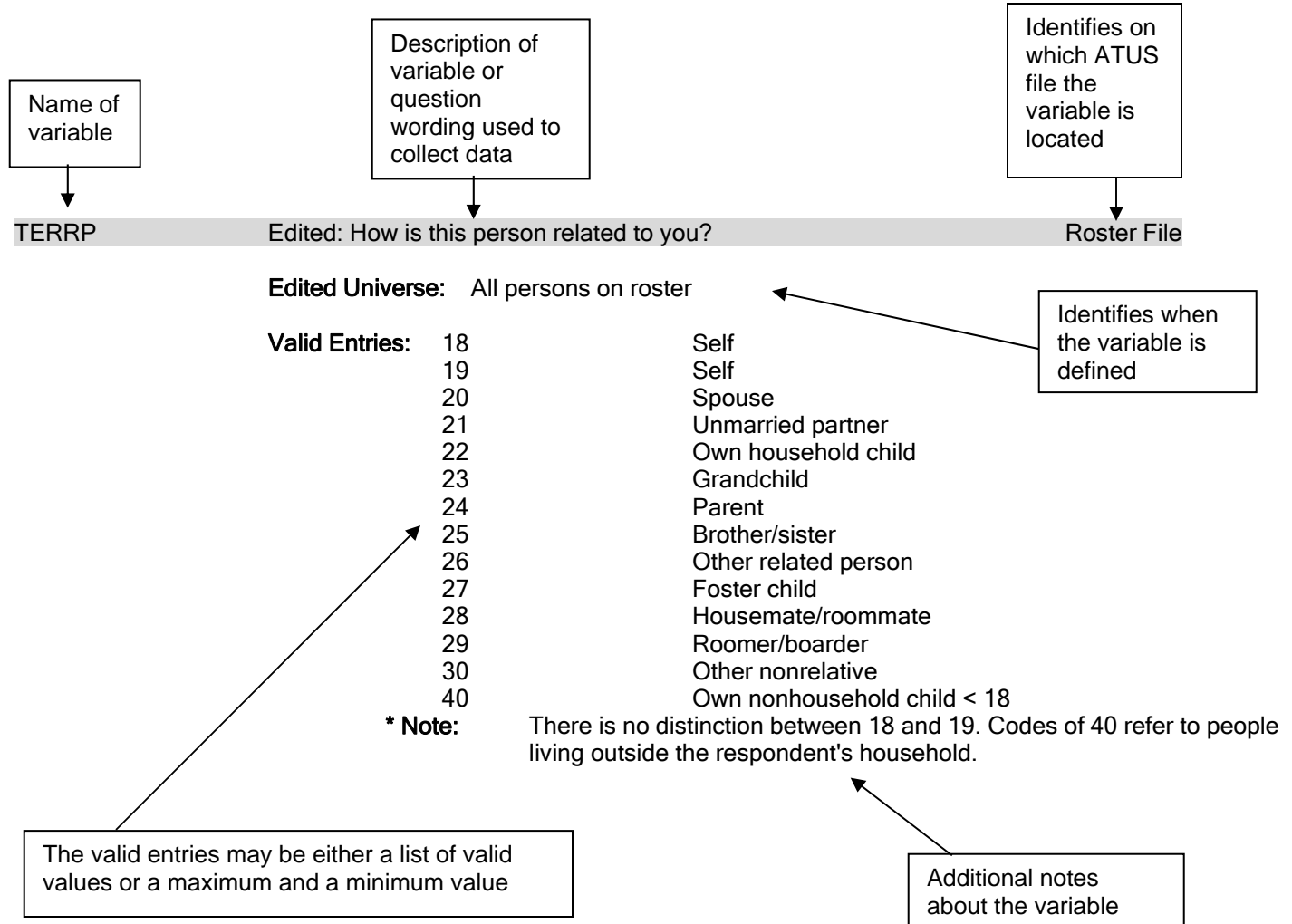
Edited variables and recodes are defined for certain universes, and these are listed in the data dictionary. For example, TEIO1OCD (occupation code) is only defined when the respondent is employed. Therefore, the universe for TEIO1OCD is TELFS = 1 or 2 (TELFs is the labor force status of the respondent, and values of 1 or 2 indicate that the respondent is employed).

Certain variables might initially appear to be the same because their descriptions are very similar. These variables are different in that they were asked of different groups of survey respondents. For example, the variables TEERNH1O and TEERNH2 both have the same question text of "Excluding overtime pay, tips, and commissions, what is your hourly rate of pay on your main job?" The difference in these two variables has to do with which respondents were asked each question. This can be determined by looking at the edited universes. TEERNH1O was asked of respondents with TEERNPER = 1, or those who said it was easiest to report their earnings hourly. TEERNH2, on the other hand, was asked of respondents with TEERNRT = 1, or those who said they were paid hourly but reported their earnings another way.

Organization of the Data Dictionary

Variables are listed in the data dictionary in alphabetical order.

Below is a sample entry from the ATUS interview data dictionary:



Frequently Used Variables

The ATUS files have many variables and users may sometimes have difficulty determining which variables to use. A list of the most commonly used ATUS variables is available at www.bls.gov/tus/freqvariables.pdf.

Changes between years of ATUS data

Those using the multi-year files should be aware of changes to ATUS survey methods between years—such as new, discontinued, and changed variables—as well as differences in activity codes between years. For a list of these changes, see the document describing ATUS changes (www.bls.gov/tus/changes.pdf). Note that the multi-year files have their own Activity Coding Lexicon (www.bls.gov/tus/lexiconnoex0313.pdf) that differs somewhat from the single-year lexicons. The multi-year coding lexicon accounts for the differences in activity codes between years.

Combining multiple years of ATUS Data

The method used to generate statistical weights (the variable TUFINLWGT) on the ATUS files changed each year from 2003 to 2006. There were no changes to the method used to generate TUFINLWGT in 2007-2013. For ease of use, this multi-year data set provides statistical weights developed using the 2006 weighting method. The weighting variable has been named TUFNWGTP and it is available for all years. All other weighting variables (e.g. TU04FWGT and TU06FWGT) were removed from the multi-year files.

For more information about ATUS statistical weights, why researchers should use them, and details about how the ATUS weighting method changed, see the ATUS User's Guide (www.bls.gov/tus/atususersguide.pdf).

2003-2013 ATUS Data Dictionary: Public ATUS Interview Data

| Name | Description | File |
|-----------------|---|------------------------------------|
| TEABRSN | Edited: what was the main reason you were absent from your job last week? | Respondent File |
| | Edited Universe: TELFS = 2 | |
| | Valid Entries: | |
| | 1 On layoff (temporary or indefinite) | |
| | 2 Slack work/business conditions | |
| | 3 Waiting for a new job to begin | |
| | 4 Vacation/personal days | |
| | 5 Own illness/injury/medical problems | |
| | 6 Childcare problems | |
| | 7 Other family/personal obligation | |
| | 8 Maternity/paternity leave | |
| | 9 Labor dispute | |
| | 10 Weather affected job | |
| | 11 School/training | |
| | 12 Civic/military duty | |
| | 13 Does not work in the business | |
| | 14 Other | |
| TEAGE | Edited: age | Roster File, Activity Summary File |
| | Edited Universe: All persons on roster | |
| | Valid Entries: | |
| | 0 Min Value | |
| | 85 Max Value | |
| | * Note: For TUYEAR < = 2004, TEAGE is topcoded to 80. All those age 80 and above have TEAGE=80. | |
| | For TUYEAR > = 2005, TEAGE is topcoded to 85. All those age 80 through 84 have TEAGE = 80. Those age 85 or above have TEAGE = 85. | |
| TEAGE_EC | Edited: age of eldercare recipient | EC Roster File |
| | Edited Universe: All eldercare recipients | |
| | Valid Entries: | |
| | 0 Min Value | |
| | 85 Max Value | |
| | * Note: Questions about eldercare were introduced in January 2011. For household members, this is the age on the diary day; for nonhousehold members it's the person's age on the first of the month for the month corresponding to 3 months before the interview. | |
| | TEAGE_EC is topcoded to 85. All those age 80 through 84 have TEAGE_EC = 80. Those age 85 or above have TEAGE_EC = 85. TXAGE_EC indicates topcoding. | |
| TEELDUR | Edited: how long have you provided care to [NAME]? | EC Roster File |
| | Edited Universe: All eldercare recipients | |
| | Valid Entries: | |
| | 1 0 to 5 months | |
| | 2 6 to 11 months | |
| | 3 1 year | |
| | 4 More than a year | |
| | * Note: Questions about eldercare were introduced in January 2011. The name is filled with the information collected from the TUELWHO question. | |

| Name | Description | File |
|-----------------|--|-----------------|
| TEELWHO | Edited: who did you give this care to? | EC Roster File |
| | Edited Universe: All eldercare recipients | |
| | Valid Entries: | |
| | 20 Spouse | |
| | 21 Unmarried partner | |
| | 22 Own household child | |
| | 23 Grandchild | |
| | 24 Parent | |
| | 25 Brother/sister | |
| | 26 Other related person | |
| | 27 Foster child | |
| | 28 Housemate/roommate | |
| | 29 Roomer/boarder | |
| | 30 Other nonrelative | |
| | 33 Mother | |
| | 34 Father | |
| | 35 Spouse | |
| | 36 Partner | |
| | 37 Brother | |
| | 38 Sister | |
| | 39 Mother-in-law | |
| | 40 Father-in-law | |
| | 41 Aunt | |
| | 42 Uncle | |
| | 43 Friend | |
| | 44 Neighbor | |
| | 46 Grandparent (see note) | |
| | 47 Grandmother/Great-grandmother (see note) | |
| | 48 Grandfather/Great-grandfather (see note) | |
| | 49 Other related person (see note) | |
| | 55 Other (see note) | |
| | 56 Other non-relative (see note) | |
| | * Note: Questions about eldercare were introduced in 2011. All codes of 30 or less refer to people living inside of the respondent's household. | |
| | Beginning in January 2013, values 47, 48, 49, and 56 were added; values 46 (grandparent/great-grandparent) and 55 (other) are no longer valid. | |
| TEELYRS | Edited: how many years have you provided care (to this person)? | EC Roster File |
| | Edited Universe: TEELDUR=4 | |
| | Valid Entries: | |
| | 1 Min Value | |
| | 99 Max Value | |
| | * Note: Questions about eldercare were introduced in January 2011. | |
| TEERN | Edited: total weekly overtime earnings (2 implied decimals) | Respondent File |
| | Edited Universe: TEERNUOT = 1 and TEERNPER = 1 | |
| | Valid Entries: | |
| | 0 Min Value | |
| | 288461 Max Value | |
| TEERNH1O | Edited: excluding overtime pay, tips, and commissions, what is your hourly rate of pay on your main job? (2 implied decimals) | Respondent File |
| | Edited Universe: TEERNPER = 1 | |

| Name | Description | File |
|-----------------|---|--|
| | Valid Entries: 0 9999 | Min Value Max Value |
| TEERNH2 | Edited: excluding overtime pay, tips, and commissions, what is your hourly rate of pay on your main job? (2 implied decimals) | Respondent File |
| | Edited Universe: TEERNRT = 1 | |
| | Valid Entries: 0 9999 | Min Value Max Value |
| TEERNHRO | Edited: how many hours do you usually work per week at this rate? | Respondent File |
| | Edited Universe: TEERNH10 >= 0 | |
| | Valid Entries: 1 99 | Min Value Max Value |
| TEERNHRY | Edited: hourly/non-hourly status | Respondent File |
| | Edited Universe: TELFS = 1 or 2 and TEIO1COW = 1 - 5 | |
| | Valid Entries: 1 2 | Paid hourly Not paid hourly |
| TEERNPER | Edited: for your main job, what is the easiest way for you to report your total earnings before taxes or other deductions: hourly, weekly, annually, or some other way? | Respondent File |
| | Edited Universe: TELFS = 1 or 2 and TEIO1COW = 1 - 5 | |
| | Valid Entries: 1 2 3 4 5 6 7 | Hourly Weekly Bi-weekly Twice monthly Monthly Annually Other |
| TEERNRT | Edited: even though you told me it is easier to report your earnings another way, are you paid at an hourly rate on this job? | Respondent File |
| | Edited Universe: TEERNPER = 2 - 7 | |
| | Valid Entries: 1 2 | Yes No |
| TEERNUOT | Edited: do you usually receive overtime pay, tips, or commissions at your main job? | Respondent File |
| | Edited Universe: TELFS = 1 or 2 and TEIO1COW = 1 - 5 | |
| | Valid Entries: 1 2 | Yes No |
| TEERNWKP | Edited: how many weeks a year do you get paid? | Respondent File |
| | Edited Universe: TEERNPER = 6 | |
| | Valid Entries: 1 52 | Min Value Max Value |
| TEHRFTPT | Edited: do you usually work more than 35 hours per week at your job(s)/family business? | Respondent File |
| | Edited Universe: TEHRUSL1 = -4 or TEHRUSL2 = -4 | |
| | Valid Entries: 1 2 3 | Yes No Hours vary |

| Name | Description | File |
|-----------------|---|--|
| TEHRUSL1 | Edited: how many hours per week do you usually work at your main job? | Respondent File |
| | Edited Universe: TELFS = 1 or 2 | |
| | Valid Entries: 0 Min Value 99 Max Value | |
| | * Note: -4 (Hours vary) is also valid for TEHRUSL1 | |
| TEHRUSL2 | Edited: how many hours per week do you usually work at your other job(s)? | Respondent File |
| | Edited Universe: TELFS = 1 or 2 and TEMJOT = 1 | |
| | Valid Entries: 0 Min Value 99 Max Value | |
| | * Note: -4 (Hours vary) is also valid for TEHRUSL2 | |
| TEHRUSLT | Edited: total hours usually worked per week (sum of TEHRUSL1 and TEHRUSL2) | Respondent File, Activity Summary File |
| | Edited Universe: TELFS = 1 or 2 | |
| | Valid Entries: 0 Min Value 999 Max Value | |
| | * Note: -4 (Hours vary) is also valid for TEHRUSLT | |
| TEIO1COW | Edited: individual class of worker code (main job) | Respondent File |
| | Edited Universe: TELFS = 1 or 2 | |
| | Valid Entries: 1 Government, federal 2 Government, state 3 Government, local 4 Private, for profit 5 Private, nonprofit 6 Self-employed, incorporated 7 Self-employed, unincorporated 8 Without pay | |
| TEIO1ICD | Edited: industry code (main job) | Respondent File |
| | Edited Universe: TELFS = 1 or 2 | |
| | Valid Entries: 0 Min Value 9999 Max Value | |
| | * Note: Beginning in January 2010, ATUS industry data were classified using the 2007 Census Industry Classification system. This system replaced the 2002 Census Industry Classification system. Refer to Appendix A for a list of industry codes using the 2002 and 2007 Census Industry Classification systems. | |
| TEIO1OCD | Edited: occupation code (main job) | Respondent File |
| | Edited Universe: TELFS = 1 or 2 | |
| | Valid Entries: 0 Min Value 9999 Max Value | |

| Name | Description | File |
|-----------------|--|---|
| | <p>* Note: Beginning with the January 2011 ATUS, occupation data were classified using the 2010 Census Occupation Classification system. This system replaced the 2002 Census Occupation Classification system. Occupation data collected after 2010 are not strictly comparable to previous years.</p> <p>Refer to Appendix A for a list of occupation codes using the 2002 and 2010 Census Occupation Classification systems.</p> | |
| TELAYAVL | <p>Edited: could you have returned to work in the last seven days if you had been recalled?</p> <p>Edited Universe: TELFS = 3</p> <p>Valid Entries: 1 Yes 2 No</p> | Respondent File |
| TELAYLK | <p>Edited: even though you expect to be called back to work, have you been looking for work during the last four weeks?</p> <p>Edited Universe: TELAYAVL = 1 or 2</p> <p>Valid Entries: 1 Yes 2 No</p> | Respondent File |
| TELFS | <p>Edited: labor force status</p> <p>Edited Universe: All respondents</p> <p>Valid Entries: 1 Employed - at work 2 Employed - absent 3 Unemployed - on layoff 4 Unemployed - looking 5 Not in labor force</p> | Respondent File, Activity Summary File |
| TELKAVL | <p>Edited: could you have started a job in the last seven days if one had been offered?</p> <p>Edited Universe: TELKM1 = 1 - 13</p> <p>Valid Entries: 1 Yes 2 No</p> | Respondent File |
| TELKM1 | <p>Edited: what are all of the things you have done to find work during the last 4 weeks? (first method)</p> <p>Edited Universe: TELFS = 4</p> <p>Valid Entries: 1 Contacted employer directly/interview 2 Contacted public employment agency 3 Contacted private employment agency 4 Contacted friends or relatives 5 Contacted school/university employment center 6 Sent out resumes/filled out applications 7 Checked union/professional registers 8 Placed or answered ads 9 Other active 10 Looked at ads 11 Attended job training programs/courses 12 Nothing 13 Other passive</p> <p>* Note: In order to research job search methods, users must combine all fields TELKM1, TULKM2 - TULKM6, TULKDK1 - TULKDK6, and TULKPS1 - TULKPS6</p> | Respondent File |

| Name | Description | File |
|-----------------|--|---|
| TEMJOT | Edited: in the last seven days did you have more than one job? | Respondent File, Activity Summary File |
| | Edited Universe: TELFS = 1 or 2 | |
| | Valid Entries: 1 Yes 2 No | |
| TERET1 | Edited: do you currently want a job, either full or part time? | Respondent File |
| | Edited Universe: TELFS = 5 and (TURETOT = 1 or TUFABS = 3 or TUFWK = 3 or TULAY = 3) and TEAGE >= 50 | |
| | Valid Entries: 1 Yes or maybe/it depends 2 No 3 Has a job | |
| TERRP | Edited: how is this person related to you? | Roster File |
| | Edited Universe: All persons on roster | |
| | Valid Entries: 18 Self 19 Self 20 Spouse 21 Unmarried partner 22 Own household child 23 Grandchild 24 Parent 25 Brother/sister 26 Other relative 27 Foster child 28 Housemate/roommate 29 Roomer/boarder 30 Other nonrelative 40 Own nonhousehold child < 18 | |
| | * Note: There is no distinction between 18 and 19. Codes of 40 refer to people living outside the respondent's household. | |
| TESCHENR | Edited: are you enrolled in high school, college, or university? | Respondent File, Activity Summary File |
| | Edited Universe: Respondents aged 15 to 49 | |
| | Valid Entries: 1 Yes 2 No | |
| TESCHFT | Edited: are you enrolled as a full-time or part-time student? | Respondent File |
| | Edited Universe: TESCHENR = 1 | |
| | Valid Entries: 1 Full time 2 Part time | |
| TESCHLVL | Edited: would that be high school, college, or university? | Respondent File, Activity Summary File |
| | Edited Universe: TESCHENR = 1 | |
| | Valid Entries: 1 High school 2 College or university | |
| TESEX | Edited: sex | Roster File, Activity Summary File |
| | Edited Universe: All persons on roster | |

| Name | Description | File |
|-------------------|---|---|
| | Valid Entries: 1 Male 2 Female | |
| TESPEMPNOT | Edited: employment status of spouse or unmarried partner | Respondent File, Activity Summary File |
| | Edited Universe: TRSPPRES = 1 or 2 Valid Entries: 1 Employed 2 Not employed | |
| TESPUHRS | Edited: usual hours of work per week of spouse or unmarried partner | Respondent File |
| | Edited Universe: TESPEMPNOT = 1 Valid Entries: 0 Min Value 99 Max Value * Note: -4 (Hours vary) is also valid for TESPUIHRS | |
| TEWHERE | Edited: where were you during the activity? | Activity File |
| | Edited Universe: All activities (except those noted below) Valid Entries: 1 Respondent's home or yard 2 Respondent's workplace 3 Someone else's home 4 Restaurant or bar 5 Place of worship 6 Grocery store 7 Other store/mall 8 School 9 Outdoors away from home 10 Library 11 Other place 12 Car, truck, or motorcycle (driver) 13 Car, truck, or motorcycle (passenger) 14 Walking 15 Bus 16 Subway/train 17 Bicycle 18 Boat/ferry 19 Taxi/limousine service 20 Airplane 21 Other mode of transportation 30 Bank 31 Gym/health club 32 Post Office 89 Unspecified place 99 Unspecified mode of transportation * Note: Values of 30, 31 and 32 for TEWHERE were introduced in October 2004 ATUS. Therefore, for (TUMONTH < 10 AND TUYEAR = 2004) these values will not appear. TEWHERE is not collected for activities with activity codes of 0101xx, 0102xx, 0104xx, 500105, or 500106. | |
| TR_03CC57 | Was a household or own non-household child < 13 in your care during this activity? | Activity File |
| | Edited Universe: All activities | |

| Name | Description | File |
|-------------------|--|--|
| | Valid Entries: 1 At least one child < 13 was in respondent's care during activity * Note: This variable was discontinued in 2004 ATUS. Therefore, for [TUYEAR > 2003], there will be missing values of TR_03CC57. It was replaced by the component variables TUCC5, TUCC5B, and TUCC7. | |
| TRCHILDNUM | Number of household children < 18 | Respondent File, Activity Summary File |
| | Edited Universe: All respondents Valid Entries: 0 Min Value 30 Max Value | |
| TRCODEP | Pooled six-digit activity code | Activity File |
| | * Note: See the 2003-13 Activity Coding Lexicon for activity definitions | |
| TRDPFTPT | Full time or part time employment status of respondent | Respondent File, Activity Summary File |
| | Edited Universe: TELFS = 1 or 2 Valid Entries: 1 Full time 2 Part time | |
| TRDTIND1 | Detailed industry recode (main job) | Respondent File |
| | Edited Universe: TELFS = 1 or 2 Valid Entries: 1 Min Value 51 Max Value * Note: Beginning in January 2010, ATUS industry data were classified using the 2007 Census Industry Classification system. This system replaced the 2002 Census Industry Classification system. Refer to Appendix A for a list of industry codes using the 2002 and 2007 Census Industry Classification systems. | |
| TRDTOCC1 | Detailed occupation recode (main job) | Respondent File |
| | Edited Universe: TELFS = 1 or 2 Valid Entries: 1 Management occupations 2 Business and financial operations occupations 3 Computer and mathematical science occupations 4 Architecture and engineering occupations 5 Life, physical, and social science occupations 6 Community and social service occupations 7 Legal occupations 8 Education, training, and library occupations 9 Arts, design, entertainment, sports, and media occupations 10 Healthcare practitioner and technical occupations 11 Healthcare support occupations 12 Protective service occupations 13 Food preparation and serving related occupations 14 Building and grounds cleaning and maintenance occupations 15 Personal care and service occupations 16 Sales and related occupations 17 Office and administrative support occupations | |

| Name | Description | File |
|-----------------|--|--|
| | Valid Entries: 18 Farming, fishing, and forestry occupations 19 Construction and extraction occupations 20 Installation, maintenance, and repair occupations 21 Production occupations 22 Transportation and material moving occupations * Note: Beginning with the January 2011 ATUS, occupation data were classified using the 2010 Census Occupation Classification system. This system replaced the 2002 Census Occupation Classification system. Occupation data collected after 2010 are not strictly comparable to previous years. Refer to Appendix A for a list of occupation codes using the 2002 and 2010 Census Occupation Classification systems. | |
| TRELHH | Eldercare recipient is a household member | EC Roster File |
| | Edited Universe: All Eldercare recipients Valid Entries: 0 Recipient is not a household member 1 Recipient is a household member * Note: Questions about eldercare were introduced in January 2011. | |
| TREMODR | Eating and Health Module respondent | Respondent File |
| | Edited Universe: All respondents Valid Entries: 0 Did not respond to Eating and Health Module 1 Responded to Eating and Health Module * Note: The Eating and Health Module interview was conducted for TUYEAR=2006, 2007 and 2008. For TUYEAR = 2006, 2007 and 2008 all respondents were selected to be interviewed for the Eating and Health Module. For these years, values of -1 indicate that the individual did not complete an Eating and Health Module interview. | |
| TRERNHLY | Hourly earnings at main job (2 implied decimals) | Respondent File |
| | Edited Universe: TEERNHRY = 1 Valid Entries: 0 Min Value 9999 Max Value * Note: This is the most-frequently used hourly earnings variable in ATUS and is only defined for employed persons who say they work hourly and are not self-employed or without pay. The allocation flag for this variable is TRHERNAL. Subject to topcoding based on the entry in TEERNHRO such that TEERNHRO x TRERNHLY <= 2884.61; topcoding is indicated in TTHR. | |
| TRERNUPD | Earnings update flag | Respondent File |
| | Edited Universe: TELFS = 1 or 2 and TEIO1COW = 1 - 5 Valid Entries: 0 Earnings carried forward from final CPS interview 1 Earnings updated in ATUS | |
| TRERNWA | Weekly earnings at main job (2 implied decimals) | Respondent File, Activity Summary File |
| | Edited Universe: TELFS = 1 or 2 and TEIO1COW = 1 - 5 Valid Entries: 0 Min Value 288461 Max Value * Note: This is the most-frequently used earnings variable in ATUS and is defined for all employed persons who are not self-employed or without pay. The allocation flag for this variable is TRWERNAL. Subject to topcoding (the maximum value cannot be greater than 2884.61); topcoding is indicated in TTOT, TTWK, and TTHR. | |

| Name | Description | File |
|------------------|---|---|
| TRHERNAL | TRERNHLY: allocation flag | Respondent File |
| | Edited Universe: TEERNHRY = 1 | |
| | Valid Entries: 0 TRERNHLY does not contain allocated information | |
| | 1 TRERNHLY contains allocated information | |
| TRHHCHILD | Presence of household children < 18 | Respondent File |
| | Edited Universe: All respondents | |
| | Valid Entries: 1 Yes | |
| | 2 No | |
| TRHOLIDAY | Flag to indicate if diary day was a holiday | Respondent File, Activity Summary File |
| | Edited Universe: All respondents | |
| | Valid Entries: 0 Diary day was not a holiday | |
| | 1 Diary day was a holiday | |
| | * Note: New Year's Day, Easter, Memorial Day, the Fourth of July, Labor Day, Thanksgiving Day, and Christmas Day are identified as holidays. If the interviewers did not work on the day following the holiday, data about that holiday were not collected. | |
| TRIMIND1 | Intermediate industry recode (main job) | Respondent File |
| | Edited Universe: TELFS = 1 or 2 | |
| | Valid Entries: 1 Agriculture, forestry, fishing, and hunting | |
| | 2 Mining | |
| | 3 Construction | |
| | 4 Manufacturing - durable goods | |
| | 5 Manufacturing - non-durable goods | |
| | 6 Wholesale trade | |
| | 7 Retail trade | |
| | 8 Transportation and warehousing | |
| | 9 Utilities | |
| | 10 Information | |
| | 11 Finance and insurance | |
| | 12 Real estate and rental and leasing | |
| | 13 Professional and technical services | |
| | 14 Management, administrative and waste management services | |
| | 15 Educational services | |
| | 16 Health care and social services | |
| | 17 Arts, entertainment, and recreation | |
| | 18 Accommodation and food services | |
| | 19 Private households | |
| | 20 Other services, except private households | |
| | 21 Public administration | |
| TRLVMODR | Leave module respondent | Respondent File |
| | Edited Universe: TEIO1COW = 1 - 6 | |
| | Valid Entries: 0 Respondent was eligible for the Leave module, but did not complete it. | |
| | 1 Respondent completed Leave module. | |

| Name | Description | File | | | | | | | | | | | | | | | | | | | | | | | | | | |
|-------------------|---|-----------------|---|---|---|--------------------------------------|---|------------------------------|---|--|---|---|---|---|---|---|---|---|---|------------------------------------|----|--|----|-------------------------|----|----------------|----|-----------------------|
| | <p>* Note: The Leave Module was conducted in 2011. For TUYEAR=2011, wage and salary workers were selected to be interviewed for the Leave Module. For TUYEAR=2011, values of -1 indicate the respondent was not eligible for the module.</p> | | | | | | | | | | | | | | | | | | | | | | | | | | | |
| TRMJIND1 | Major industry recode (main job) | Respondent File | | | | | | | | | | | | | | | | | | | | | | | | | | |
| | <p>Edited Universe: TELFS = 1 or 2</p> | | | | | | | | | | | | | | | | | | | | | | | | | | | |
| | <p>Valid Entries:</p> <table border="0"> <tr><td>1</td><td>Agriculture, forestry, fishing, and hunting</td></tr> <tr><td>2</td><td>Mining</td></tr> <tr><td>3</td><td>Construction</td></tr> <tr><td>4</td><td>Manufacturing</td></tr> <tr><td>5</td><td>Wholesale and retail trade</td></tr> <tr><td>6</td><td>Transportation and utilities</td></tr> <tr><td>7</td><td>Information</td></tr> <tr><td>8</td><td>Financial activities</td></tr> <tr><td>9</td><td>Professional and business services</td></tr> <tr><td>10</td><td>Educational and health services</td></tr> <tr><td>11</td><td>Leisure and hospitality</td></tr> <tr><td>12</td><td>Other services</td></tr> <tr><td>13</td><td>Public administration</td></tr> </table> | | 1 | Agriculture, forestry, fishing, and hunting | 2 | Mining | 3 | Construction | 4 | Manufacturing | 5 | Wholesale and retail trade | 6 | Transportation and utilities | 7 | Information | 8 | Financial activities | 9 | Professional and business services | 10 | Educational and health services | 11 | Leisure and hospitality | 12 | Other services | 13 | Public administration |
| 1 | Agriculture, forestry, fishing, and hunting | | | | | | | | | | | | | | | | | | | | | | | | | | | |
| 2 | Mining | | | | | | | | | | | | | | | | | | | | | | | | | | | |
| 3 | Construction | | | | | | | | | | | | | | | | | | | | | | | | | | | |
| 4 | Manufacturing | | | | | | | | | | | | | | | | | | | | | | | | | | | |
| 5 | Wholesale and retail trade | | | | | | | | | | | | | | | | | | | | | | | | | | | |
| 6 | Transportation and utilities | | | | | | | | | | | | | | | | | | | | | | | | | | | |
| 7 | Information | | | | | | | | | | | | | | | | | | | | | | | | | | | |
| 8 | Financial activities | | | | | | | | | | | | | | | | | | | | | | | | | | | |
| 9 | Professional and business services | | | | | | | | | | | | | | | | | | | | | | | | | | | |
| 10 | Educational and health services | | | | | | | | | | | | | | | | | | | | | | | | | | | |
| 11 | Leisure and hospitality | | | | | | | | | | | | | | | | | | | | | | | | | | | |
| 12 | Other services | | | | | | | | | | | | | | | | | | | | | | | | | | | |
| 13 | Public administration | | | | | | | | | | | | | | | | | | | | | | | | | | | |
| TRMJOCC1 | Major occupation recode (main job) | Respondent File | | | | | | | | | | | | | | | | | | | | | | | | | | |
| | <p>Edited Universe: TELFS = 1 or 2</p> | | | | | | | | | | | | | | | | | | | | | | | | | | | |
| | <p>Valid Entries:</p> <table border="0"> <tr><td>1</td><td>Management, business, and financial occupations</td></tr> <tr><td>2</td><td>Professional and related occupations</td></tr> <tr><td>3</td><td>Service occupations</td></tr> <tr><td>4</td><td>Sales and related occupations</td></tr> <tr><td>5</td><td>Office and administrative support occupations</td></tr> <tr><td>6</td><td>Farming, fishing, and forestry occupations</td></tr> <tr><td>7</td><td>Construction and extraction occupations</td></tr> <tr><td>8</td><td>Installation, maintenance, and repair occupations</td></tr> <tr><td>9</td><td>Production occupations</td></tr> <tr><td>10</td><td>Transportation and material moving occupations</td></tr> </table> | | 1 | Management, business, and financial occupations | 2 | Professional and related occupations | 3 | Service occupations | 4 | Sales and related occupations | 5 | Office and administrative support occupations | 6 | Farming, fishing, and forestry occupations | 7 | Construction and extraction occupations | 8 | Installation, maintenance, and repair occupations | 9 | Production occupations | 10 | Transportation and material moving occupations | | | | | | |
| 1 | Management, business, and financial occupations | | | | | | | | | | | | | | | | | | | | | | | | | | | |
| 2 | Professional and related occupations | | | | | | | | | | | | | | | | | | | | | | | | | | | |
| 3 | Service occupations | | | | | | | | | | | | | | | | | | | | | | | | | | | |
| 4 | Sales and related occupations | | | | | | | | | | | | | | | | | | | | | | | | | | | |
| 5 | Office and administrative support occupations | | | | | | | | | | | | | | | | | | | | | | | | | | | |
| 6 | Farming, fishing, and forestry occupations | | | | | | | | | | | | | | | | | | | | | | | | | | | |
| 7 | Construction and extraction occupations | | | | | | | | | | | | | | | | | | | | | | | | | | | |
| 8 | Installation, maintenance, and repair occupations | | | | | | | | | | | | | | | | | | | | | | | | | | | |
| 9 | Production occupations | | | | | | | | | | | | | | | | | | | | | | | | | | | |
| 10 | Transportation and material moving occupations | | | | | | | | | | | | | | | | | | | | | | | | | | | |
| | <p>* Note: Beginning with the January 2011 ATUS, occupation data were classified using the 2010 Census Occupation Classification system. This system replaced the 2002 Census Occupation Classification system. Occupation data collected after 2010 are not strictly comparable to previous years.</p> | | | | | | | | | | | | | | | | | | | | | | | | | | | |
| TRMJOCGR | Major occupation category (main job) | Respondent File | | | | | | | | | | | | | | | | | | | | | | | | | | |
| | <p>Edited Universe: TELFS = 1 or 2</p> | | | | | | | | | | | | | | | | | | | | | | | | | | | |
| | <p>Valid Entries:</p> <table border="0"> <tr><td>1</td><td>Management, professional, and related occupations</td></tr> <tr><td>2</td><td>Service occupations</td></tr> <tr><td>3</td><td>Sales and office occupations</td></tr> <tr><td>4</td><td>Farming, fishing, and forestry occupations</td></tr> <tr><td>5</td><td>Construction and maintenance occupations</td></tr> <tr><td>6</td><td>Production, transportation, and material moving occupations</td></tr> </table> | | 1 | Management, professional, and related occupations | 2 | Service occupations | 3 | Sales and office occupations | 4 | Farming, fishing, and forestry occupations | 5 | Construction and maintenance occupations | 6 | Production, transportation, and material moving occupations | | | | | | | | | | | | | | |
| 1 | Management, professional, and related occupations | | | | | | | | | | | | | | | | | | | | | | | | | | | |
| 2 | Service occupations | | | | | | | | | | | | | | | | | | | | | | | | | | | |
| 3 | Sales and office occupations | | | | | | | | | | | | | | | | | | | | | | | | | | | |
| 4 | Farming, fishing, and forestry occupations | | | | | | | | | | | | | | | | | | | | | | | | | | | |
| 5 | Construction and maintenance occupations | | | | | | | | | | | | | | | | | | | | | | | | | | | |
| 6 | Production, transportation, and material moving occupations | | | | | | | | | | | | | | | | | | | | | | | | | | | |
| | <p>* Note: Beginning with the January 2011 ATUS, occupation data were classified using the 2010 Census Occupation Classification system. This system replaced the 2002 Census Occupation Classification system. Occupation data collected after 2010 are not strictly comparable to previous years.</p> | | | | | | | | | | | | | | | | | | | | | | | | | | | |
| TRNHHCHILD | Presence of own non-household child < 18 | Respondent File | | | | | | | | | | | | | | | | | | | | | | | | | | |
| | <p>Edited Universe: All respondents</p> | | | | | | | | | | | | | | | | | | | | | | | | | | | |
| | <p>Valid Entries: 1 Yes</p> | | | | | | | | | | | | | | | | | | | | | | | | | | | |

| Name | Description | File |
|--------------------|---|---|
| | Edited Universe: All respondents | |
| | Valid Entries: 2 No | |
| TRNUMHOU | Number of people living in respondent's household | Respondent File |
| | Edited Universe: All respondents | |
| | Valid Entries: 1 Min Value 30 Max Value | |
| TROHHCHILD | Presence of own household children < 18 | Respondent File |
| | Edited Universe: All respondents | |
| | Valid Entries: 1 Yes 2 No | |
| TRSPFTPT | Full time or part time employment status of spouse or unmarried partner | Respondent File, Activity Summary File |
| | Edited Universe: TESPEMNOT = 1 | |
| | Valid Entries: 1 Full time 2 Part time 3 Hours vary | |
| TRSPPRES | Presence of the respondent's spouse or unmarried partner in the household | Respondent File, Activity Summary File |
| | Edited Universe: All respondents | |
| | Valid Entries: 1 Spouse present 2 Unmarried partner present 3 No spouse or unmarried partner present | |
| TRTALONE | Total nonwork-related time respondent spent alone (in minutes) | Respondent File |
| | Edited Universe: All respondents | |
| | Valid Entries: 0 Min Value 1440 Max Value | |
| | * Note: This variable is computed using TUWHO_CODE information; time spent working and all activities for which who information is not collected, such as sleeping, are omitted from the calculation | |
| TRTALONE_WK | Total work- and nonwork-related time respondent spent alone (in minutes) | Respondent File |
| | Edited Universe: All respondents | |
| | Valid Entries: 0 Min Value 1440 Max Value | |
| | * Note: This variable is computed using TUWHO_CODE information; all activities for which who information is not collected, such as sleeping, are excluded from the calculation | |
| | Starting in January 2010, TUWHO_CODE information was collected for work activities (0501xx) | |
| | TRTALONE_WK was introduced in 2010. Therefore, cases with [TUYEAR < 2010] will have missing values. | |
| TRTCC | Total time spent during diary day providing secondary childcare for household and own nonhousehold children < 13 (in minutes) | Respondent File |
| | Edited Universe: All respondents | |

| Name | Description | File |
|--------------------|--|------------------------|
| | Valid Entries: 0 1440 * Note: TRTCC is the sum of all values of TRTCC_LN for each TUCASEID | Min Value Max Value |
| TRTCC_LN | Total time spent during activity providing secondary child care for household and own nonhousehold children < 13 (in minutes) Edited Universe: All activities for respondents who have at least one household or own nonhousehold child < 13 Valid Entries: 0 1440 * Note: For TUYEAR > = 2004, TRTCC_LN is the maximum of the activity of the following variables: TRTOHH_LN, TRTNOHH_LN, and TRTONHH_LN. TRTCC_LN is not calculated for activities when no household child < 13 was awake. It is also not calculated for households that do not have at least one household or nonhousehold child < 13. | Activity File |
| TRTCCC | Total nonwork-related time respondent spent with customers, clients, and co-workers (in minutes) Edited Universe: All respondents Valid Entries: 0 1440 * Note: This variable is computed using TUWHO_CODE information; time spent working and all activities for which who information is not collected, such as sleeping, are omitted from the calculation. For cases with [TUYEAR > 2009], TUWHO_CODE = (59, 60, 61, or 62) is included in this calculation (others may be present) For cases with [TUYEAR < 2010], TUWHO_CODE = 55 is included in this calculation (others may be present) | Respondent File |
| TRTCCC_WK | Total work- and nonwork-related time respondent spent with customers, clients, and coworkers (in minutes) Edited Universe: All respondents Valid Entries: 0 1440 * Note: This variable is computed using TUWHO_CODE information; all activities for which who information is not collected are omitted from the calculation. TUWHO_CODE = (59, 60, 61, or 62) is included in this calculation (others may be present) Starting in January 2010, TUWHO_CODE information was collected for work activities (0501xx) TRTCCC_WK was introduced in 2010. Therefore, cases with [TUYEAR < 2010] will have missing values. | Respondent File |
| TRTCCTOT | Total time spent during diary day providing secondary childcare for all children < 13 (in minutes) Edited Universe: All respondents Valid Entries: 0 1440 * Note: For TUYEAR > = 2004, TRTCCTOT is the sum of all values of TRTCCTOT_LN for each TUCASEID | Respondent File |
| TRTCCTOT_LN | Total time spent during activity providing secondary childcare for all children < 13 (in minutes) | Activity File |

| Name | Description | File |
|------------------|---|-----------------|
| | Edited Universe: All activities Valid Entries: 0 1440 Min Value Max Value * Note: TRTCCTOT_LN is the maximum for the activity of the following variables: TRTOHH_LN, TRTNOHH_LN, TRTONHH_LN, and TRTCOC_LN. | |
| TRTCHILD | Total nonwork-related time respondent spent with household or nonhousehold children < 18 (in minutes) | Respondent File |
| | Edited Universe: All respondents Valid Entries: 0 1440 Min Value Max Value * Note: This variable is computed using TUWHO_CODE information; time spent working and all activities for which who information is not collected, such as sleeping, are omitted from the calculation | |
| TRTCOC | Total time spent during diary day providing secondary childcare for nonown, nonhousehold children < 13 (in minutes) | Respondent File |
| | Edited Universe: All respondents Valid Entries: 0 1440 Min Value Max Value * Note: TRTCOC is the sum of all TRTCOC_LN for each TUCASEID. | |
| TRTCOC_LN | Total time spent during activity providing secondary child care for nonown, nonhousehold children <13 (in minutes) | Activity File |
| | Edited Universe: All activities Valid Entries: 0 1440 Min Value Max Value * Note: TRTCOC_LN is calculated using TUCC8. It does not include activities with TRTIER2P=0101, 0301, 0302, 0303, 0401, 0402, 0403 or activities with TRCODEP=180381, 180481. | |
| TRTEC | Total time spent providing eldercare (in minutes) | Respondent File |
| | Edited Universe: TUECYTD=1 Valid Entries: 0 1440 Min Value Max Value * Note: TRTEC is the sum of all values of TRTEC_LN. Excludes time spent in activities with codes = 01xxxx or 0805xx. Questions about eldercare and TRTEC were introduced in January 2011. Therefore, cases with [TUYEAR < 2011] will have missing values. | |
| TRTEC_LN | Time (in minutes) spent providing eldercare by activity | Activity File |
| | Edited Universe: TUEC24 = 1 or 96 Valid Entries: 0 1440 Min Value Max Value * Note: Excludes time spent in activities with codes = 01xxxx or 0805xx. Questions about eldercare and TRTEC_LN were introduced in January 2011. Therefore, cases with [TUYEAR < 2011] will have missing values. | |
| TRTFAMILY | Total nonwork-related time respondent spent with family members (in minutes) | Respondent File |
| | Edited Universe: All respondents | |

| Name | Description | File |
|--------------------|---|------------------------|
| | Valid Entries: 0 1440 * Note: This variable is computed using TUWHO_CODE information; time spent working and all activities for which who information is not collected, such as sleeping, are omitted from the calculation | Min Value Max Value |
| TRTFRIEND | Total nonwork-related time respondent spent with friends (in minutes) | Respondent File |
| | Edited Universe: All respondents Valid Entries: 0 1440 * Note: This variable is computed using TUWHO_CODE information; time spent working and all activities for which who information is not collected, such as sleeping, are omitted from the calculation | Min Value Max Value |
| TRTHH | Total time spent during diary day providing secondary childcare for household children < 13 (in minutes) | Respondent File |
| | Edited Universe: All respondents Valid Entries: 0 1440 * Note: TRTHH is the sum of all values of TRTHH_LN for each TUCASEID. | Min Value Max Value |
| TRTHH_LN | Total time spent during activity providing secondary childcare for household children < 13 (in minutes) | Activity File |
| | Edited Universe: All activities for respondents with at least one household child < 13 Valid Entries: 0 1440 * Note: TRTHH_LN is the maximum for the activity of the following variables: TRTOHH_LN and TRTNOHH_LN. | Min Value Max Value |
| TRTHHFAMILY | Total nonwork-related time respondent spent with household family members (in minutes) | Respondent File |
| | Edited Universe: All respondents Valid Entries: 0 1440 * Note: This variable is computed using TUWHO_CODE information; time spent working and all activities for which who information is not collected, such as sleeping, are omitted from the calculation | Min Value Max Value |
| TRTIER1P | Pooled lexicon tier 1: 1st and 2nd digits of 6-digit activity code | Activity File |
| | Valid Entries: 01 50 * Note: Valid activity codes are listed in the 2003-13 Coding Lexicon. TRCODEP provides the full six-digit activity code for each activity occurring on the Activity file. | Min Value Max Value |
| TRTIER2P | Pooled lexicon tiers 1 and 2: 1st four digits of 6-digit activity code | Activity File |
| | * Note: Valid activity codes are listed in the 2003-13 Coding Lexicon. TRCODEP provides the full six-digit activity code for each activity occurring on the Activity file. | |
| TRTNOCHILD | Total nonwork-related time respondent spent with nonown children < 18 (in minutes) | Respondent File |
| | Edited Universe: All respondents Valid Entries: 0 1440 | Min Value Max Value |

| Name | Description | File |
|--------------------|---|-----------------|
| | <p>* Note: This variable is computed using TUWHO_CODE information; time spent working and all activities for which who information is not collected, such as sleeping, are omitted from the calculation</p> | |
| TRTNOHH | Total time spent during diary day providing secondary childcare for nonown household children < 13 (in minutes) | Respondent File |
| | <p>Edited Universe: All respondents</p> <p>Valid Entries: 0 Min Value 1440 Max Value</p> <p>* Note: TRTNOHH is the sum of all values of TRTNOHH_LN for each TUCASEID.</p> | |
| TRTNOHH_LN | Total time spent during activity providing secondary childcare for nonown household children < 13 (in minutes) | Activity File |
| | <p>Edited Universe: All activities for respondents with at least one nonown household child < 13</p> <p>Valid Entries: 0 Min Value 1440 Max Value</p> <p>* Note: TRTNOHH_LN is calculated using TUCC5B. It does not include activities where TRTIER2P= 0101, 0301, 0302, 0303, and where TRCODEP= 180381. It does not include any activity or part of any activity in which no household child was awake (determined by TUCC2 and TUCC4).</p> | |
| TRTO | Total time spent during diary day providing secondary childcare for own children < 13 (in minutes) | Respondent File |
| | <p>Edited Universe: All respondents</p> <p>Valid Entries: 0 Min Value 1440 Max Value</p> <p>* Note: TRTO is the sum of all values of TRTO_LN for each TUCASEID.</p> | |
| TRTO_LN | Total time spent during activity providing secondary childcare for own children < 13 (in minutes) | Activity File |
| | <p>Edited Universe: All activities for respondents with at least one own child < 13</p> <p>Valid Entries: 0 Min Value 1440 Max Value</p> <p>* Note: TRTO_LN is the maximum for the activity of the following variables: TRTOHH_LN and TRTONHH_LN.</p> | |
| TRTOHH | Total time spent during diary day providing secondary childcare for own household children < 13 (in minutes) | Respondent File |
| | <p>Edited Universe: All respondents</p> <p>Valid Entries: 0 Min Value 1440 Max Value</p> <p>* Note: TRTOHH is the sum of all values of TRTOHH_LN for each TUCASEID.</p> | |
| TRTOHH_LN | Total time spent during activity providing secondary childcare for own household children < 13 (in minutes) | Activity File |
| | <p>Edited Universe: All activities for respondents with at least one own household child < 13</p> <p>Valid Entries: 0 Min Value 1440 Max Value</p> <p>* Note: TRTOHH_LN is calculated using TUCC5. It does not include activities with TRTIER2P=0101, 0301, 0302, 0303, or with TRCODEP=180381. It does not include any activity or part of any activity in which no household child was awake (determined by TUCC2 and TUCC4).</p> | |
| TRTOHHCHILD | Total nonwork-related time respondent spent with own household children < 18 (in minutes) | Respondent File |

| Name | Description | File |
|---------------------|---|------------------------|
| | Edited Universe: All respondents | |
| | Valid Entries: 0 1440 | Min Value Max Value |
| | * Note: This variable is computed using TUWHO_CODE information; time spent working and all activities for which who information is not collected, such as sleeping, are omitted from the calculation | |
| TRTONHH | Total time spent during diary day providing secondary childcare for own nonhousehold children < 13 (in minutes) | Respondent File |
| | Edited Universe: All respondents | |
| | Valid Entries: 0 1440 | Min Value Max Value |
| | * Note: TRTONHH is the sum of all values of TRTONHH_LN for each TUCASEID. | |
| TRTONHH_LN | Total time spent during activity providing secondary childcare for own nonhousehold children < 13 (in minutes) | Activity File |
| | Edited Universe: All activities for respondents with at least one own nonhousehold child < 13 | |
| | Valid Entries: 0 1440 | Min Value Max Value |
| | * Note: TRTONHH_LN is calculated using TUC7. It does not include activities with TRTIER2P of 0101, 0301, 0302, 0303, 0401, 0402, 0403, and activities with TRCODEP of 180381 or 180481. | |
| TRTONHHCHILD | Total nonwork-related time respondent spent with own nonhousehold children < 18 (in minutes) | Respondent File |
| | Edited Universe: All respondents | |
| | Valid Entries: 0 1440 | Min Value Max Value |
| | * Note: This variable is computed using TUWHO_CODE information; time spent working and all activities for which who information is not collected, such as sleeping, are omitted from the calculation | |
| TRTSPONLY | Total nonwork-related time respondent spent with spouse only (in minutes) | Respondent File |
| | Edited Universe: All respondents | |
| | Valid Entries: 0 1440 | Min Value Max Value |
| | * Note: This variable is computed using TUWHO_CODE information; time spent working and all activities for which who information is not collected, such as sleeping, are omitted from the calculation | |
| TRTSPOUSE | Total nonwork-related time respondent spent with spouse (others may be present) (in minutes) | Respondent File |
| | Edited Universe: All respondents | |
| | Valid Entries: 0 1440 | Min Value Max Value |
| | * Note: This variable is computed using TUWHO_CODE information; time spent working and all activities for which who information is not collected, such as sleeping, are omitted from the calculation | |
| TRTUNMPART | Total nonwork-related time respondent spent with unmarried partner (others may be present) (in minutes) | Respondent File |
| | Edited Universe: All respondents | |

| Name | Description | File |
|-------------------|--|--|
| | Valid Entries: 0 Min Value 1440 Max Value * Note: This variable is computed using TUWHO_CODE information; time spent working and all activities for which who information is not collected, such as sleeping, are omitted from the calculation | |
| TRWBELIG | Flag identifying activities eligible for the Well-being Module | Activity File |
| | Edited Universe: All activities Valid Entries: 0 Activity not eligible for selection in the Well-being Module 1 Activity eligible for selection in the Well-being Module * Note: The Well-being Module was conducted in 2010, 2012, and 2013. For TUYEAR = 2010, 2012, or 2013, all ATUS respondents were selected to be interviewed for the Well-being Module. Activities with codes of 0101xx, 0102xx, 0104xx, 500105, or 500106 or with durations less than 5 minutes are not eligible | |
| TRWBMODR | Well-being Module respondent | Respondent File |
| | Edited Universe: All respondents Valid Entries: 0 Did not respond to Well-being Module 1 Responded to the Well-being Module * Note: The Well-being Module was conducted in 2010, 2012 and 2013. All individuals on the Respondent file were selected to be interviewed for the Well-being Module. | |
| TRWERNAL | TRERNWA: allocation flag | Respondent File |
| | Edited Universe: TELFS = 1 or 2 and TEIO1COW = 1 - 5 Valid Entries: 0 TRERNWA does not contain allocated information 1 TRERNWA contains allocated information | |
| TRWHONA | Who information not asked for activity | Who File |
| | Edited Universe: All activities Valid Entries: 0 TUWHO_CODE asked 1 TUWHO_CODE not asked | |
| TRYHHCHILD | Age of youngest household child < 18 | Respondent File, Activity Summary File |
| | Edited Universe: TRHHCHILD = 1 Valid Entries: 0 Min Value 17 Max Value | |
| TTHR | Hourly pay topcode flag | Respondent File |
| | Valid Entries: 0 Not topcoded 1 Topcoded * Note: Indicates topcoding of hourly pay in earnings variables | |
| TTOT | Overtime amount topcode flag | Respondent File |
| | Valid Entries: 0 Not topcoded 1 Topcoded * Note: Indicates topcoding of overtime pay in earnings variables | |
| TTWK | Weekly earnings topcode flag | Respondent File |
| | Valid Entries: 0 Not topcoded 1 Topcoded | |

| Name | Description | File |
|---------------------|--|---|
| | * Note: Indicates topcoding of weekly pay in earnings variables | |
| TUABSOT | In the last seven days, did you have a job either full or part time? | Respondent File |
| | Valid Entries: 1 Yes 2 No 3 Retired 4 Disabled 5 Unable to work | |
| TUACTDUR | Duration of activity in minutes (last activity not truncated at 4:00 a.m.) | Activity File |
| | Valid Entries: 1 Min Value 9999 Max Value | |
| TUACTDUR24 | Duration of activity in minutes (last activity truncated at 4:00 a.m.) | Activity File |
| | Valid Entries: 1 Min Value 1440 Max Value | |
| TUACTIVITY_N | Activity line number | Activity File, Who File, EH Activity File |
| | Valid Entries: 1 Min Value 91 Max Value | |
| TUBUS | Does anyone in the household own a business or a farm? | Respondent File |
| | Valid Entries: 1 Yes 2 No | |
| TUBUS1 | In the last seven days, did you do any unpaid work in the family business or farm? | Respondent File |
| | Valid Entries: 1 Yes 2 No | |
| TUBUS2OT | Do you receive payments or profits from the business? | Respondent File |
| | Valid Entries: 1 Yes 2 No | |
| TUBUSL1 | TULINENO of farm or business owner (first owner) | Respondent File |
| | Valid Entries: 0 Min Value 30 Max Value | |
| TUBUSL2 | TULINENO of farm or business owner (second owner) | Respondent File |
| | Valid Entries: 0 Min Value 30 Max Value | |
| TUBUSL3 | TULINENO of farm or business owner (third owner) | Respondent File |
| | Valid Entries: 0 Min Value 30 Max Value | |
| TUBUSL4 | TULINENO of farm or business owner (fourth owner) | Respondent File |
| | Valid Entries: 0 Min Value 30 Max Value | |
| TUCASEID | ATUS Case ID (14-digit identifier) | All Files |
| TUCC2 | Time first household child < 13 woke up | Respondent File |
| | Valid Entries: 00:00:00 Min Value 24:00:00 Max Value | |
| TUCC4 | Time last household child < 13 went to bed | Respondent File |

| Name | Description | File |
|--------------------|---|---|
| | Valid Entries: 00:00:00 24:00:00 | Min Value Max Value |
| TUCC5 | Was at least one of your own household children < 13 in your care during this activity? | Activity File |
| | Valid Entries: 0 No 1 Yes 97 No additional activities involved childcare | |
| TUCC5B | Was at least one of your non-own household children < 13 in your care during this activity? | Activity File |
| | Valid Entries: 0 No 1 Yes 97 No additional activities involved childcare | |
| TUCC7 | Was at least one of your own non-household children < 13 in your care during this activity? | Activity File |
| | Valid Entries: 0 No 1 Yes 97 No additional activities involved childcare | |
| TUCC8 | Other than household or own non-household children < 13, was there a child 0-12 in your care during this activity? | Activity File |
| | Valid Entries: 0 No 1 Yes 97 No additional activities involved childcare | |
| TUCC9 | Are the non-own, non-household children you cared for in TUCC8 related to you? | Respondent File |
| | Valid Entries: 1 Yes 2 No 3 Some are, some are not | |
| TUCUMDUR | Cumulative duration of activity lengths in minutes; last activity not truncated at 4:00am or 1440 minutes (cumulative total of TUACTIONDUR for each TUCASEID) | Activity File |
| | Valid Entries: 1 Min Value 9999 Max Value | |
| TUCUMDUR24 | Cumulative duration of activity lengths in minutes; last activity truncated at 4:00am or 1440 minutes (cumulative total of TUACTIONDUR24 for each TUCASEID) | Activity File |
| | Valid Entries: 1 Min Value 1440 Max Value | |
| TUDIARYDATE | Date of diary day (date about which the respondent was interviewed) | Respondent File |
| | Valid Entries: 20030101 Min Value 20131230 Max Value | |
| | * Note: TUDIARYDATE is in YYYYMMDD format | |
| TUDIARYDAY | Day of the week of diary day (day of the week about which the respondent was interviewed) | Respondent File, Activity Summary File |
| | Valid Entries: 1 Sunday 2 Monday 3 Tuesday 4 Wednesday 5 Thursday 6 Friday 7 Saturday | |

| Name | Description | File |
|------------------|--|-----------------|
| TUDIS | Last time we spoke to someone in this household you were reported to have a disability. Does your disability prevent you from doing any kind of work for the next six months? | Respondent File |
| | Valid Entries: 1 Yes 2 No 3 Did not have a disability last time | |
| TUDIS1 | Does your disability prevent you from accepting any kind of work during the next six months? | Respondent File |
| | Valid Entries: 1 Yes 2 No | |
| TUDIS2 | Do you have a disability that prevents you from accepting any kind of work during the next six months? | Respondent File |
| | Valid Entries: 1 Yes 2 No | |
| TUDURSTOP | Method for reporting activity duration | Activity File |
| | Valid Entries: 1 Activity duration was entered 2 Activity stop time was entered | |
| | * Note: Starting in 2012, this variable was added to the public use data files. Cases with [TUYEAR < 2012] will have missing values for TUDURSTOP | |
| TUEC24 | At which times or during which activities did you provide that care or assistance yesterday? | Activity File |
| | Valid Entries: 1 Activity identified as eldercare 96 All day 97 No more activities | |
| | * Note: Questions about eldercare were introduced in January 2011. Therefore, cases with [TUYEAR < 2011] will have missing values for TUEC24 | |
| TUECLNO | Line number of eldercare recipient | EC Roster File |
| | Valid Entries: 2 Min Value 35 Max Value | |
| | * Note: If recipient is a household member, TUECLNO = TULINENO; if not a household member, TUECLNO = new line numbers (last tulineno+1) | |
| TUECYTD | Did you provide any eldercare or assistance yesterday? | Respondent File |
| | Valid Entries: 1 Yes 2 No | |
| | * Note: Questions about eldercare were introduced in January 2011. Therefore, cases with [TUYEAR < 2011] will have missing values for TUECYTD | |
| TUELDER | Not including financial assistance or help you provided as part of your paid job, since the first of [REF_MONTH], have you provided any care of assistance for an adult who needed help because of a condition related to aging? | Respondent File |
| | Valid Entries: 1 Yes 2 No | |
| | * Note: The reference month is 3 months prior to the interview. For example, if the interview took place on March 15, the reference month would be December. | |
| | Questions about eldercare were introduced in January 2011. Therefore, cases with [TUYEAR < 2011] will have missing values for TUELDER. | |
| TUELFREQ | How often did you provide this care? | Respondent File |
| | Valid Entries: 1 Daily 2 Several times a week 3 About once a week | |

| Name | Description | File |
|-----------------|---|--|
| TUIODP3 | Last time we spoke to someone in this household, you were reported as (occupation) and your usual duties were (activities). Is this an accurate description of your current job? (main job) | Respondent File |
| | Valid Entries: 1 Yes 2 No | |
| TULAY | During the last seven days were you on layoff from your job? | Respondent File |
| | Valid Entries: 1 Yes 2 No 3 Retired 4 Disabled 5 Unable to work | |
| TULAY6M | Have you been given any indication that you will be recalled to work within the next 6 months? | Respondent File |
| | Valid Entries: 1 Yes 2 No | |
| TULAYAVR | Why could you not have started a job in the last week? | Respondent File |
| | Valid Entries: 1 Own temporary illness 2 Going to school 3 Other | |
| TULAYDT | Has your employer given you a date to return to work? (to layoff job) | Respondent File |
| | Valid Entries: 1 Yes 2 No | |
| TULINENO | ATUS person line number | ATUS-CPS File, Respondent File, Roster File, Who File, EC Roster File |
| | Valid Entries: 1 Min Value 30 Max Value | |
| | * Note: The person selected to be interviewed for ATUS is always TULINENO = 1 | |
| TULK | Have you been doing anything to find work during the last four weeks? | Respondent File |
| | Valid Entries: 1 Yes 2 No 3 Retired 4 Disabled 5 Unable to work | |
| TULKAVR | Why could you not have started a job last week? | Respondent File |
| | Valid Entries: 1 Waiting for new job to begin 2 Own temporary illness 3 Going to school 4 Other | |
| TULKDK1 | You said you have been trying to find work. How did you go about looking? (first method) | Respondent File |
| | Valid Entries: 1 Contacted employer directly/interview 2 Contacted public employment agency 3 Contacted private employment agency 4 Contacted friends or relatives 5 Contacted school/university employment center 6 Sent out resumes/filled out applications 7 Checked union/professional registers 8 Placed or answered ads | |

| Name | Description | File |
|----------------|--|-----------------|
| | Valid Entries: 9 Other active 10 Looked at ads 11 Attended job training programs/courses 12 Nothing 13 Other passive * Note: In order to research job search methods, users must combine all fields TELKM1, TULKM2 - TULKM6, TULKDK1 - TULKDK4, and TULKPS1 - TULKPS4 | |
| TULKDK2 | TULKDK1 text: (second method) | Respondent File |
| | Valid Entries: 1 Contacted employer directly/interview 2 Contacted public employment agency 3 Contacted private employment agency 4 Contacted friends or relatives 5 Contacted school/university employment center 6 Sent out resumes/filled out applications 7 Checked union/professional registers 8 Placed or answered ads 9 Other active 10 Looked at ads 11 Attended job training programs/courses 13 Other passive 97 No additional job search activities * Note: In order to research job search methods, users must combine all fields TELKM1, TULKM2 - TULKM6, TULKDK1 - TULKDK4, and TULKPS1 - TULKPS4. | |
| TULKDK3 | TULKDK1 text: (third method) | Respondent File |
| | Valid Entries: 1 Min Value 97 Max Value * Note: See valid values for TULKDK2 | |
| TULKDK4 | TULKDK1 text: (fourth method) | Respondent File |
| | Valid Entries: 1 Min Value 97 Max Value * Note: See valid values for TULKDK2 | |
| TULKM2 | What are all of the things you have done to find work during the last 4 weeks? (second method) | Respondent File |
| | Valid Entries: 1 Contacted employer directly/interview 2 Contacted public employment agency 3 Contacted private employment agency 4 Contacted friends or relatives 5 Contacted school/university employment center 6 Sent out resumes/filled out applications 7 Checked union/professional registers 8 Placed or answered ads 9 Other active 10 Looked at ads 11 Attended job training programs/courses 13 Other passive 97 No additional job search activities * Note: In order to research job search methods, users must combine all fields TELKM1, TULKM2 - TULKM6, TULKDK1 - TULKDK4, and TULKPS1 - TULKPS4. | |
| TULKM3 | TULKM2 text: (third method) | Respondent File |

| Name | Description | File |
|----------------|--|------------------------|
| | Valid Entries: 1 97 * Note: See valid values for TULKM2 | Min Value Max Value |
| TULKM4 | TULKM2 text: (fourth method) | Respondent File |
| | Valid Entries: 1 97 * Note: See valid values for TULKM2 | Min Value Max Value |
| TULKM5 | TULKM2 text: (fifth method) | Respondent File |
| | Valid Entries: 1 97 * Note: See valid values for TULKM2 | Min Value Max Value |
| TULKM6 | TULKM2 text: (sixth method) | Respondent File |
| | Valid Entries: 1 97 * Note: See valid values for TULKM2 | Min Value Max Value |
| TULKPS1 | Can you tell me more about what you did to search for work? (first method) | Respondent File |
| | Valid Entries: 1 Contacted employer directly/interview 2 Contacted public employment agency 3 Contacted private employment agency 4 Contacted friends or relatives 5 Contacted school/university employment center 6 Sent out resumes/filled out applications 7 Checked union/professional registers 8 Placed or answered ads 9 Other active 10 Looked at ads 11 Attended job training programs/courses 12 Nothing 13 Other passive 97 No more job search activities * Note: In order to research job search methods, users must combine all fields TELKM1, TULKM2 - TULKM6, TULKDK1 - TULKDK4, and TULKPS1 - TULKPS4. | |
| TULKPS2 | TULKPS1 text: (second method) | Respondent File |
| | Valid Entries: 1 Contacted employer directly/interview 2 Contacted public employment agency 3 Contacted private employment agency 4 Contacted friends or relatives 5 Contacted school/university employment center 6 Sent out resumes/filled out applications 7 Checked union/professional registers 8 Placed or answered ads 9 Other active 10 Looked at ads 11 Attended job training programs/courses 13 Other passive 97 No additional job search activities * Note: In order to research job search methods, users must combine all fields TELKM1, TULKM2 - TULKM6, TULKDK1 - TULKDK4, and TULKPS1 - TULKPS4. | |

| Name | Description | File |
|-------------------|---|-----------------|
| TULKPS3 | TULKPS1 text: (third method) | Respondent File |
| | Valid Entries: 1 Min Value 97 Max Value | |
| | * Note: See valid values for TULKPS2 | |
| TULKPS4 | TULKPS1 text: (fourth method) | Respondent File |
| | Valid Entries: 1 Min Value 97 Max Value | |
| | * Note: See valid values for TULKPS2 | |
| TUMONTH | Month of diary day (month of day about which ATUS respondent was interviewed) | Respondent File |
| | Valid Entries: 1 Min Value 12 Max Value | |
| TURETOT | The last time we spoke to someone in this household you were reported to be retired. Are you still retired? | Respondent File |
| | Valid Entries: 1 Yes 2 No 3 Was not retired last time | |
| TUSPABS | In the last seven days, did your spouse or unmarried partner have a job either full or part time? | Respondent File |
| | Valid Entries: 1 Yes 2 No 3 Retired 4 Disabled 5 Unable to work | |
| TUSPUSFT | Does your spouse or unmarried partner usually work 35 hours or more per week? | Respondent File |
| | Valid Entries: 1 Yes 2 No 3 Hours vary 4 No longer has a job | |
| TUSPWK | In the last seven days, did your spouse or unmarried partner do any work for pay or profit? | Respondent File |
| | Valid Entries: 1 Yes 2 No 3 Retired 4 Disabled 5 Unable to work | |
| TUSTARTTIM | Activity start time | Activity File |
| | Valid Entries: 00:00:00 Min Value 24:00:00 Max Value | |
| TUSTOPTIME | Activity stop time | Activity File |
| | Valid Entries: 00:00:00 Min Value 24:00:00 Max Value | |
| TUWHO_CODE | Who was in the room with you / Who accompanied you? | Who File |
| | Valid Entries: 18 Alone 19 Alone 20 Spouse 21 Unmarried partner 22 Own household child | |

| Name | Description | File |
|------|-----------------------|---|
| | Valid Entries: | |
| | 23 | Grandchild |
| | 24 | Parent |
| | 25 | Brother/sister |
| | 26 | Other related person |
| | 27 | Foster child |
| | 28 | Housemate/roommate |
| | 29 | Roomer/boarder |
| | 30 | Other nonrelative |
| | 40 | Own nonhousehold child < 18 |
| | 51 | Parents (not living in household) |
| | 52 | Other nonhousehold family members < 18 |
| | 53 | Other nonhousehold family members 18 and older (including parents-in-law) |
| | 54 | Friends |
| | 55 | Co-workers/colleagues/clients |
| | 56 | Neighbors/acquaintances |
| | 57 | Other nonhousehold children < 18 |
| | 58 | Other nonhousehold adults 18 and older |
| | 59 | Boss or manager |
| | 60 | People whom I supervise |
| | 61 | Co-workers |
| | 62 | Customers |

*** Note:** Not collected for activities with codes of 0101xx, 0102xx, 0104xx, 500105, or 500106. There is no distinction between 18 and 19. All codes of 40 or greater refer to people living outside of the respondent's household.

Beginning in January 2010, information was collected for activities with the code 0501xx. For cases with [TUYEAR < 2010] and activity code 0501xx, TUWHO_CODE was not collected.

Values of 59, 60, 61, and 62 were introduced and the value 55 was dropped in January 2010 ATUS. Therefore, for cases with [TUYEAR < 2010] values 59, 60, 61, and 62 will not appear. For cases with [TUYEAR > 2009], the value 55 will not appear.

| TUYEAR | Year of diary day (year of day about which respondent was interviewed) | Respondent File, Activity Summary File |
|--------|--|--|
|--------|--|--|

Valid Entries: 2003 Min Value
 2013 Max Value

APPENDIX A

Beginning in January 2010, ATUS industry data were classified using the 2007 Census Industry classification system. This system replaced the 2002 Census Industry classification system, which was used in the 2003-09 ATUS. On the 2003-13 ATUS file, cases where the variable TUYEAR has values less than or equal to 2009 have industry codes classified using the 2002 Census Industry Classification System. Cases on the 2003-13 ATUS file where the variable TUYEAR has values greater than 2009 have industry codes classified using the 2007 Census Industry Classification System. For more information, please see <http://www.bls.gov/cps/cpsoccind.htm>.

Detailed Industry Code using the 2002 Census Industry Classification system (TRDTIND1)

| TRDTIND1 | Description | TEIO1ICD |
|----------|---|-----------------|
| 1 | Agriculture | 0170-0180, 0290 |
| 2 | Forestry, logging, fishing, hunting, and trapping | 0190-0280 |
| 3 | Mining | 0370-0490 |
| 4 | Construction | 770 |
| 5 | Nonmetallic mineral product manufacturing | 2470-2590 |
| 6 | Primary metals and fabricated metal products | 2670-2990 |
| 7 | Machinery manufacturing | 3070-3290 |
| 8 | Computer and electronic product manufacturing | 3360-3390 |
| 9 | Electrical equipment, appliance manufacturing | 3470, 3490 |
| 10 | Transportation equipment manufacturing | 3570-3690 |
| 11 | Wood product manufacturing | 3770-3870 |
| 12 | Furniture and fixtures manufacturing | 3890 |
| 13 | Miscellaneous and not specified manufacturing | 3960-3990 |
| 14 | Food manufacturing | 1070-1290 |
| 15 | Beverage and tobacco product manufacturing | 1370, 1390 |
| 16 | Textile, apparel, and leather manufacturing | 1470-1790 |
| 17 | Paper manufacturing and printing | 1870-1990 |
| 18 | Petroleum and coal products manufacturing | 2070, 2090 |
| 19 | Chemical manufacturing | 2170-2290 |
| 20 | Plastics and rubber products manufacturing | 2370-2390 |
| 21 | Wholesale trade | 4070-4590 |
| 22 | Retail trade | 4670-5790 |
| 23 | Transportation and warehousing | 6070-6390 |
| 24 | Utilities | 0570-0690 |
| 25 | Publishing industries (except internet) | 6470-6490 |
| 26 | Motion picture and sound recording industries | 6570, 6590 |
| 27 | Broadcasting (except internet) | 6670 |
| 28 | Internet publishing and broadcasting | 6675 |
| 29 | Telecommunications | 6680, 6690 |
| 30 | Internet service providers and data processing services | 6692, 6695 |
| 31 | Other information services | 6770, 6780 |
| 32 | Finance | 6870-6970 |
| 33 | Insurance | 6990 |
| 34 | Real estate | 7070 |

| | | |
|----|--|-----------------------|
| 35 | Rental and leasing services | 7080-7190 |
| 36 | Professional, scientific, and technical services | 7270-7490 |
| 37 | Management of companies and enterprises | 7570 |
| 38 | Administrative and support services | 7580-7780 |
| 39 | Waste management and remediation services | 7790 |
| 40 | Educational services | 7860-7890 |
| 41 | Hospitals | 8190 |
| 42 | Health care services, except hospitals | 7970-8180, 8270, 8290 |
| 43 | Social assistance | 8370-8470 |
| 44 | Arts, entertainment, and recreation | 8560-8590 |
| 45 | Traveler accommodation | 8660, 8670 |
| 46 | Food services and drinking places | 8680, 8690 |
| 47 | Repair and maintenance | 8770-8890 |
| 48 | Personal and laundry services | 8970-9090 |
| 49 | Membership associations and organizations | 9160-9190 |
| 50 | Private households | 9290 |
| 51 | Public administration | 9370-9590 |

Beginning in January 2010, ATUS industry data were classified using the 2007 Census Industry classification system. This system replaced the 2002 Census Industry classification system, which was used in the 2003-09 ATUS. On the 2003-13 ATUS file, cases where the variable TUYEAR has values less than or equal to 2009 have industry codes classified using the 2002 Census Industry Classification System. Cases on the 2003-13 ATUS file where the variable TUYEAR has values greater than 2009 have industry codes classified using the 2007 Census Industry Classification System. For more information, please see <http://www.bls.gov/cps/cpsoccind.htm>.

Detailed Industry Code using the 2007 Census Industry Classification System (TRDTIND1)

| TRDTIND1 | Description | TEIO1ICD |
|----------|---|-----------------|
| 1 | Agriculture | 0170-0180, 0290 |
| 2 | Forestry, logging, fishing, hunting, and trapping | 0190-0280 |
| 3 | Mining | 0370-0490 |
| 4 | Construction | 770 |
| 5 | Nonmetallic mineral product manufacturing | 2470-2590 |
| 6 | Primary metals and fabricated metal products | 2670-2990 |
| 7 | Machinery manufacturing | 3070-3290 |
| 8 | Computer and electronic product manufacturing | 3360-3390 |
| 9 | Electrical equipment, appliance manufacturing | 3470, 3490 |
| 10 | Transportation equipment manufacturing | 3570-3690 |
| 11 | Wood product manufacturing | 3770-3870 |
| 12 | Furniture and fixtures manufacturing | 3890 |
| 13 | Miscellaneous and not specified manufacturing | 3960-3990 |
| 14 | Food manufacturing | 1070-1290 |
| 15 | Beverage and tobacco product manufacturing | 1370, 1390 |
| 16 | Textile, apparel, and leather manufacturing | 1470-1790 |
| 17 | Paper manufacturing and printing | 1870-1990 |
| 18 | Petroleum and coal products manufacturing | 2070, 2090 |
| 19 | Chemical manufacturing | 2170-2290 |
| 20 | Plastics and rubber products manufacturing | 2370-2390 |
| 21 | Wholesale trade | 4070-4590 |
| 22 | Retail trade | 4670-5790 |
| 23 | Transportation and warehousing | 6070-6390 |
| 24 | Utilities | 0570-0690 |
| 25 | Publishing industries (except internet) | 6470-6490 |
| 26 | Motion picture and sound recording industries | 6570, 6590 |
| 27 | Broadcasting (except internet) | 6670 |
| 28 | Internet publishing and broadcasting | 6672 |
| 29 | Telecommunications | 6680, 6690 |
| 30 | Internet service providers and data processing services | 6695 |
| 31 | Other information services | 6770, 6780 |
| 32 | Finance | 6870-6970 |
| 33 | Insurance | 6990 |
| 34 | Real estate | 7070 |
| 35 | Rental and leasing services | 7080-7190 |
| 36 | Professional, scientific, and technical services | 7270-7490 |
| 37 | Management of companies and enterprises | 7570 |

| | | |
|----|---|-----------------------|
| 38 | Administrative and support services | 7580-7780 |
| 39 | Waste management and remediation services | 7790 |
| 40 | Educational services | 7860-7890 |
| 41 | Hospitals | 8190 |
| 42 | Health care services, except hospitals | 7970-8180, 8270, 8290 |
| 43 | Social assistance | 8370-8470 |
| 44 | Arts, entertainment, and recreation | 8560-8590 |
| 45 | Traveler accommodation | 8660, 8670 |
| 46 | Food services and drinking places | 8680, 8690 |
| 47 | Repair and maintenance | 8770-8890 |
| 48 | Personal and laundry services | 8970-9090 |
| 49 | Membership associations and organizations | 9160-9190 |
| 50 | Private households | 9290 |
| 51 | Public administration | 9370-9590 |

Beginning in the January 2011 ATUS, occupation data were classified using the 2010 Census Occupation Classification system. This system replaced the 2002 Census Occupation Classification system, which was used in the 2002-10 ATUS. On the 2003-13 ATUS file, cases with [TUYEAR > 2010] will have occupation data generated using the 2010 Census Occupation Classification system. Cases on the 2003-13 ATUS file with [TUYEAR ≤ 2010] will have occupation data generated using the 2002 Census Occupation Classification system. The 2011 occupation data are not strictly comparable to previous years. For more information, please see <http://www.bls.gov/cps/cpsoccind.htm> .

**Detailed Occupation Codes using the 2002 Census Occupation Classification system
(PRDTOCC1 and PRDTOCC2)**

| Detailed Occupation Code | Description | Census Occupation Code (PEIO1OCD and PEIO2OCD) |
|---------------------------------|--|---|
| 1 | Management Occupations | 0010–0430 |
| 2 | Business and financial operations occupations | 0500–0950 |
| 3 | Computer and mathematical science occupations | 1000–1240 |
| 4 | Architecture and engineering occupations | 1300–1560 |
| 5 | Life, Physical, and social science occupations | 1600–1960 |
| 6 | Community and social service occupations | 2000–2060 |
| 7 | Legal occupations | 2100–2150 |
| 8 | Education, training, and library occupations | 2200–2550 |
| 9 | Arts, design, entertainment, sports, and media occupations | 2600–2960 |
| 10 | Healthcare practitioner and technical occupations | 3000–3540 |
| 11 | Healthcare support occupations | 3600–3650 |
| 12 | Protective service occupations | 3700–3950 |
| 13 | Food preparation and serving related occupations | 4000–4160 |
| 14 | Building and grounds cleaning and maintenance occupations | 4200–4250 |
| 15 | Personal care and service occupations | 4300–4650 |
| 16 | Sales and related occupations | 4700–4960 |
| 17 | Office and administrative support occupations | 5000–5930 |
| 18 | Farming, fishing, and forestry occupations | 6000–6130 |
| 19 | Construction and extraction occupations | 6200–6940 |
| 20 | Installation, maintenance, and repair occupations | 7000–7620 |
| 21 | Production occupations | 7700–8960 |
| 22 | Transportation and material moving occupations | 9000–9750 |

Beginning in the January 2011 ATUS, occupation data were classified using the 2010 Census Occupation Classification system. This system replaced the 2002 Census Occupation Classification system, which was used in the 2002-10 CPS. On the 2003-13 ATUS file, cases with [TUYEAR > 2010] will have occupation data generated using the 2010 Census Occupation Classification system. Cases on the 2003-13 ATUS file with [TUYEAR ≤ 2010] will have occupation data generated using the 2002 Census Occupation Classification system. The 2011 occupation data are not strictly comparable to previous years. For more information, please see <http://www.bls.gov/cps/cpsoccind.htm> .

Detailed Occupation Codes using the 2010 Census Occupation Classification system (TRDTOCC1)

| Detailed Occupation Code | Description | Census Occupation Code (TEIO1OCD) |
|--------------------------|--|-----------------------------------|
| 1 | Management Occupations | 0010–0430 |
| 2 | Business and financial operations occupations | 0500–0950 |
| 3 | Computer and mathematical science occupations | 1000–1240 |
| 4 | Architecture and engineering occupations | 1300–1560 |
| 5 | Life, Physical, and social science occupations | 1600–1965 |
| 6 | Community and social service occupations | 2000–2060 |
| 7 | Legal occupations | 2100–2160 |
| 8 | Education, training, and library occupations | 2200–2550 |
| 9 | Arts, design, entertainment, sports, and media occupations | 2600–2960 |
| 10 | Healthcare practitioner and technical occupations | 3000–3540 |
| 11 | Healthcare support occupations | 3600–3655 |
| 12 | Protective service occupations | 3700–3955 |
| 13 | Food preparation and serving related occupations | 4000–4160 |
| 14 | Building and grounds cleaning and maintenance occupations | 4200–4250 |
| 15 | Personal care and service occupations | 4300–4650 |
| 16 | Sales and related occupations | 4700–4965 |
| 17 | Office and administrative support occupations | 5000–5940 |
| 18 | Farming, fishing, and forestry occupations | 6000–6130 |
| 19 | Construction and extraction occupations | 6200–6940 |
| 20 | Installation, maintenance, and repair occupations | 7000–7630 |
| 21 | Production occupations | 7700–8965 |
| 22 | Transportation and material moving occupations | 9000–9750 |

Industry Codes (TEIO1ICD)

2002 Census Industry Classification Codes available at <http://www.bls.gov/tus/census02iocodes.pdf>

2007 Census Industry Classification Codes available at <http://www.bls.gov/tus/census07icodes.pdf>

Occupation Codes (TEIO1OCD)

2002 Census Occupation Classification Codes available at <http://www.bls.gov/tus/census02iocodes.pdf>

2010 Census Occupation Classification Codes available at <http://www.bls.gov/tus/census10ocodes.pdf>

Appendix B:
Variables on the 2003-13 ATUS Interview files that do not appear on the single-year ATUS Interview files

The 2003-13 ATUS files include additional variables that are not found on the single-year ATUS files. Appendix B provides a list of variables appearing on the multi-year data files, and *not* on the single-year ATUS files. It also indicates on which multi-year file you can find these variables.

Table B
Variables appearing on the 2003-13 ATUS files, but not on single-year ATUS files

| Variable name | Description of variable | 2003-13 Activity File | 2003-13 Activity Summary File | 2003-13 Roster File | 2003-13 Respondent File | 2003-13 Who File |
|---|--|-----------------------|-------------------------------|---------------------|-------------------------|------------------|
| An "X" indicates the multi-year file on which the variable appears. | | | | | | |
| TRCODEP | Multi-year six digit activity code | X | | | | |
| TRTIER2P | Pooled lexicon tiers 1 and 2: First four digits of multi-year six-digit activity code. | X | | | | |
| TRTIER1P | Pooled lexicon tier 1: First and second digits of multi-year six-digit activity code. | X | | | | |
| TUFNWGTP | ATUS weight corresponding to 2006 weighting method | | X | | X | |

Appendix C:
Variables on the single-year ATUS Activity files that do not appear on the 2003-13 ATUS Activity file

The 2003-13 ATUS Activity file includes most, but not all, of the variables available on the single-year ATUS Activity data files. Appendix C provides a list of variables that appear on single-year Activity files, but do *not* appear on the 2003-13 ATUS Activity file. It also indicates where you can find variables not included on the 2003-13 ATUS Activity data file. For example, an “X” in the column titled “2003 ATUS Activity file” indicates that, while the variable does not appear on the 2003-13 ATUS Activity file, it does appear on the 2003 ATUS Activity file. For more information on the variables listed below, please see the single-year data dictionaries, available online at www.bls.gov/tus/dictionaries.htm.

Table C
Variables not appearing on the 2003-13 ATUS Activity file, but appearing on single-year ATUS Activity files

| Variable name | Description of variable | 2003 ATUS Activity file | 2004 ATUS Activity file | 2005 ATUS Activity file | 2006 ATUS Activity file | 2007 – 2013 ATUS Activity files |
|---|---|-------------------------|-------------------------|-------------------------|-------------------------|---------------------------------|
| An “X” indicates the single-year Activity file on which the variable appears. | | | | | | |
| TUTIER1CODE | Lexicon Tier 1: 1st and 2nd digits of 6-digit activity code | X | X | X | X | X |
| TUTIER2CODE | Lexicon Tier 2: 3rd and 4th digits of 6-digit activity code | X | X | X | X | X |
| TUTIER3CODE | Lexicon Tier 3: 5th and 6th digits of 6-digit activity code | X | X | X | X | X |
| TXWHERE | TEWHERE: allocation flag | X | X | X | X | X |
| TRCODE | Six-digit activity code | | | | | X |
| TRTIER2 | First and second activity tiers | | | | | X |

Appendix D:
Variables on the single-year ATUS Respondent files that do not appear on the 2003-13 ATUS Respondent File

The 2003-13 ATUS Respondent file includes most, but not all, of the variables available on the single-year ATUS Respondent data files. Appendix D provides a list of variables that appear on the single-year files, but *not* on the 2003-13 ATUS Respondent file. It also indicates where you can find variables not included on the 2003-13 ATUS Respondent data file. For example, an “X” in the column titled “2003 ATUS Respondent file” indicates that, while the variable does not appear on the 2003-13 ATUS Respondent file, it does appear on the 2003 ATUS Respondent file. For more information on the variables listed below, please see the single-year data dictionaries, available online at www.bls.gov/tus/dictionaries.htm.

Table D
Variables *not* appearing on the 2003-13 ATUS Respondent file, but appearing on single-year ATUS Respondent files

| Variable name | Description of variable | ATUS 2003 Respondent file | ATUS 2004 Respondent file | ATUS 2005 Respondent file | ATUS 2006 Respondent file | ATUS 2007-2013 Respondent files |
|---------------|---|--|---------------------------|---------------------------|---------------------------|---------------------------------|
| | | An “X” indicates the single-year Respondent file on which the variable appears | | | | |
| TU04FWGT | ATUS final weight based on 2004 weighting method | X | | | | |
| TU06FWGT | ATUS final weight based on 2006 weighting method | X | X | X | | |
| TUBNCHWGT | ATUS benchmark weight | X | | | | |
| TUCC5B_CK | Reason respondent did not report secondary childcare activities for nonown household children | | | X | X | X |
| TUCC5_CK | Reason respondent did not report secondary childcare activities for own household children | | | X | X | X |
| TUERN2 | Weekly overtime earnings | X | X | X | X | X |
| TUERNH1C | What is your hourly rate of pay on this job, excluding overtime pay, tips, or commissions? | X | X | X | X | X |
| TULKDK5 | TULKDK1 text: (fifth method) | X | X | X | X | X |

Table D
Variables not appearing on the 2003-13 ATUS Respondent file, but appearing on single-year ATUS Respondent files, cont

| Variable name | Description of variable | ATUS 2003 Respondent file | ATUS 2004 Respondent file | ATUS 2005 Respondent file | ATUS 2006 Respondent file | ATUS 2007-2013 Respondent files |
|---------------|------------------------------|--|---------------------------|---------------------------|---------------------------|---------------------------------|
| | | An "X" indicates the single-year Respondent file on which the variable appears | | | | |
| TULKDK6 | TULKDK1 text: (sixth method) | X | X | X | X | X |
| TULKPS5 | TULKPS1 text: (fifth method) | X | X | X | X | X |
| TULKPS6 | TULKPS1 text: (sixth method) | X | X | X | X | X |
| TXABSRSN | TEABSRSN: allocation flag | X | X | X | X | X |
| TXERN | TEERN: allocation flag | X | X | X | X | X |
| TXERNH1O | TEERNH1O: allocation flag | X | X | X | X | X |
| TXERNH2 | TEERNH2: allocation flag | X | X | X | X | X |
| TXERNHRO | TEERNHRO: allocation flag | X | X | X | X | X |
| TXERNHRY | TEERNHRY: allocation flag | X | X | X | X | X |
| TXERNPER | TEERNPER: allocation flag | X | X | X | X | X |
| TXERNRT | TEERNRT: allocation flag | X | X | X | X | X |
| TXERNUOT | TEERNUOT: allocation flag | X | X | X | X | X |
| TXERNWKP | TEERNWKP: allocation flag | X | X | X | X | X |
| TXHRFTPT | TEHRFTPT: allocation flag | X | X | X | X | X |
| TXHRUSL1 | TEHRUSL1: allocation flag | X | X | X | X | X |
| TXHRUSL2 | TEHRUSL2: allocation flag | X | X | X | X | X |
| TXHRUSLT | TEHRUSLT: allocation flag | X | X | X | X | X |
| TXIO1COW | TEIO1COW: allocation flag | X | X | X | X | X |
| TXIO1ICD | TEIO1ICD: allocation flag | X | X | X | X | X |
| TXIO1OCD | TEIO1OCD: allocation flag | X | X | X | X | X |
| TXLAYAVL | TELAYAVL: allocation flag | X | X | X | X | X |
| TXLAYLK | TELAYLK: allocation flag | X | X | X | X | X |

Table D
Variables *not* appearing on the 2003-13 ATUS Respondent file, but appearing on single-year ATUS Respondent files, cont

| Variable name | Description of variable | ATUS 2003 Respondent file | ATUS 2004 Respondent file | ATUS 2005 Respondent file | ATUS 2006 Respondent file | ATUS 2007-2013 Respondent files |
|---------------|---|---|---------------------------|---------------------------|---------------------------|---------------------------------|
| | | An "X" indicates the single-year Respondent file on which the variable appears. | | | | |
| TXLFS | TELFSS: allocation flag | X | X | X | X | X |
| TXLKAVL | TELKAVL: allocation flag | X | X | X | X | X |
| TXLKM1 | TELKM1: allocation flag | X | X | X | X | X |
| TXMJOT | TEMJOT: allocation flag | X | X | X | X | X |
| TXRET1 | TERET1: allocation flag | X | X | X | X | X |
| TXSCHENR | TESCHENR: allocation flag | X | X | X | X | X |
| TXSCHFT | TESCHFT: allocation flag | X | X | X | X | X |
| TXSCHLVL | TESCHLVL: allocation flag | X | X | X | X | X |
| TXSPEMPNOT | TESPEMPNOT: allocation flag | X | X | X | X | X |
| TXSPUHR | TESPUHR: allocation flag | X | X | X | X | X |
| TXTC | TRTCC_LN and TRTCC: allocation flag | X | X | X | X | X |
| TXTCCTOT | TRTCCTOT_LN and TRTCCTOT: allocation flag | | X | X | X | X |
| TXTCOC | TRTCOC_LN and TRTCOC: allocation flag | X | X | X | X | X |
| TXTHH | TRTHH_LN and TRTHH: allocation flag | | X | X | X | X |
| TXTNOHH | TRTNOHH_LN and TRTNOHH: allocation flag | | X | X | X | X |
| TXTO | TRTO_LN and TRTO: allocation flag | | X | X | X | X |
| TXTOHH | TRTOHH_LN and TRTOHH: allocation flag | | X | X | X | X |
| TXTONHH | TRTONHH_LN and TRTONHH: allocation flag | | X | X | X | X |

Appendix E:
Variables on the single-year ATUS Roster files that do not appear on the 2003-13 ATUS Roster File

The 2003-13 ATUS Roster file includes most, but not all, of the variables available on the single-year ATUS Roster data files. Appendix E provides a list of variables that appear on the single-year ATUS Roster files, but do *not* appear on the 2003-13 ATUS Roster file. It also indicates where you can find variables not included on the 2003-13 ATUS Roster data file. For example, an “X” in the column titled “2003 ATUS Roster file” indicates that, while the variable does *not* appear on the 2003-13 ATUS Roster file, it does appear on the 2003 ATUS Roster file. For more information on the variables listed below, please see the single-year data dictionaries, available online at www.bls.gov/tus/dictionaries.htm.

Table E
Variables *not* appearing on the 2003-13 ATUS Roster file, but appearing on single-year ATUS Roster files

| Variable name | Description of variable | 2003 ATUS Roster file | 2004 ATUS Roster file | 2005 ATUS Roster file | 2006 ATUS Roster file | 2007-2013 ATUS Roster files |
|---|---------------------------------|-----------------------|-----------------------|-----------------------|-----------------------|-----------------------------|
| An “X” indicates the single-year Roster file on which the variable appears. | | | | | | |
| TURRP | Relationship to ATUS respondent | X | X | | | |
| TXAGE | TEAGE: allocation flag | X | X | X | X | X |
| TXRRP | TERRP: allocation flag | X | X | X | X | X |
| TXSEX | TESEX: allocation flag | X | X | X | X | X |

Appendix F:**Variables on the single-year ATUS Eldercare Roster files that do not appear on the 2011-13 ATUS Eldercare Roster File**

The 2011-13 ATUS Eldercare Roster file includes most, but not all, of the variables available on the single-year ATUS Eldercare Roster data files. Because questions about eldercare were introduced in 2011, there are no single-year Eldercare Roster files from 2003-10. Appendix F provides a list of variables that appear on the single-year ATUS Eldercare Roster files, but do *not* appear on the 2011-13 ATUS Eldercare Roster file. It also indicates where you can find variables not included on the 2011-13 ATUS Eldercare Roster data file. For example, an “X” in the column titled “2011 ATUS Eldercare Roster file” indicates that, while the variable does *not* appear on the 2011-13 ATUS Eldercare Roster file, it does appear on the 2011 ATUS Eldercare Roster file. For more information on the variables listed below, please see the single-year data dictionaries, available online at www.bls.gov/tus/dictionaries.htm.

Table F
Variables not appearing on the 2011-13 ATUS Eldercare Roster file, but appearing on single-year ATUS Eldercare Roster files

| Variable name | Description of variable | 2011 ATUS Eldercare Roster file | 2012 ATUS Eldercare Roster file | 2013 ATUS Eldercare Roster file |
|---------------|---------------------------|--|---------------------------------|---------------------------------|
| | | An “X” indicates the single-year Eldercare Roster file on which the variable appears | | |
| TXAGE_EC | TEAGE_EC: allocation flag | X | X | X |
| TXELDUR | TEELDUR: allocation flag | X | X | X |
| TXELWHO | TEELWHO: allocation flag | X | X | X |
| TXELYRS | TEELYRS: allocation flag | X | X | X |