

American Time Use Survey (ATUS) Data Dictionary:
2024 Interview Data
Variables collected in ATUS
June 2025

The American Time Use Survey (ATUS) is sponsored by the Bureau of Labor Statistics
and conducted by the U.S. Census Bureau.

Important Information about the ATUS Data Dictionary

Introduction

The American Time Use Survey (ATUS) is sponsored by the Bureau of Labor Statistics and conducted by the U.S. Census Bureau. The purpose of this document is to provide information about the variables available on six of the 2024 ATUS data files: the Respondent file, the Roster file, the Activity file, the Who file, the Eldercare Roster file, and the Activity Summary file. These files contain information collected and assigned in the 2024 ATUS interviews.

This data dictionary lists all the variables available on these files and their valid values. It also provides directions on how to read the data dictionary.

Two additional data dictionaries describe other ATUS data files:

- 2024 ATUS-CPS Data Dictionary: Describes the variables available on the ATUS-CPS file as well as some variables on the Activity Summary file. The ATUS-CPS file contains data from the Current Population Survey (CPS) for persons selected to be surveyed for the ATUS and for members of their households. (The information on the ATUS-CPS file was collected two to five months before the ATUS interview and in some cases was out of date at the time the ATUS was conducted.)
- 2024 ATUS Survey Methodology Data Dictionary: Describes the variables available on the Case History file and the Call History file.

These additional data dictionaries are available on the ATUS Web site at www.bls.gov/tus/dictionaries.htm.

ATUS Interview Data Files

The following six data files include data available from the ATUS interviews.

1. ATUS Respondent File

This file contains case-specific variables collected in ATUS (that is, variables for which there is one value for each respondent). These include, for example, labor force and earnings information, total time providing secondary childcare, total time providing eldercare, and ATUS statistical weights.

There is one record for each ATUS respondent.

Below is a simplified example. The TUCASEID identifies each household, and TULINENO identifies each individual within the household. The example contains responses from five individuals; note that the respondent always has TULINENO=1. In the example, each respondent has corresponding values denoting school enrollment (TESCHENR), labor force status (TELFS), and total time spent alone (TRTALONE). The actual ATUS Respondent file contains many more variables as well as many more lines.

TUCASEID	TULINENO	TESCHENR	TELFS	TRTALONE
20240101020240	1	1	1	40
20240101020241	1	1	1	350
20240101020242	1	1	5	0
20240101020243	1	2	5	556
20240101020244	1	1	4	100

2. ATUS Roster File

This file contains information on the age, sex, and each household member's relationship to the ATUS respondent. The same information is also included for the respondent's own nonhousehold children under 18.

There is one record for each individual in the respondent's household (including the respondent's own nonhousehold children under 18).

A simplified example appears below. The TUCASEID identifies each household, and the TULINENO identifies each individual in the household. In the example below, TUCASEID 20240101020240 has three persons residing in the household, TUCASEID 20240101020241 has two persons in the household, and TUCASEID 20240101020242 has one person. The actual ATUS Roster file contains more variables and many additional lines.

TUCASEID	TULINENO	TERRP	TESEX	TEAGE
20240101020240	1	18	2	42
20240101020240	2	20	1	45
20240101020240	3	22	1	11
20240101020241	1	18	1	65
20240101020241	2	20	2	72
20240101020242	1	18	2	21

3. ATUS Activity File

This file includes activity-level information collected in ATUS, including activity code, location, duration, activity start and stop times, whether respondents had a child under 13 in their care during the activity, and whether the activity was identified as eldercare. Location (or “where”) information is not collected for some selected activities (such as sleeping and grooming); a value that indicates the activity was “out of universe” for the “where” question (-1) is filled in these situations.

There is one record for each activity.

A simplified example of the ATUS Activity file appears below. This is an illustration of one respondent's day. Because only one person is interviewed per household, each TUCASEID on the Activity file identifies a respondent. Each activity is identified by an activity number (TUACTIVITY_N). The ATUS Activity file contains more variables describing each activity as well as many more lines than does the example below.

TUCASEID	TUACTIVITY_N	TUSTARTTIM	TUSTOPTIME
20240101020240	1	04:00:00	07:00:00
20240101020240	2	07:00:00	07:30:00
20240101020240	3	07:30:00	08:00:00
20240101020240	4	08:00:00	12:00:00
20240101020240	5	12:00:00	13:30:00
20240101020240	6	13:30:00	17:30:00
20240101020240	7	17:30:00	18:00:00
20240101020240	8	18:00:00	19:00:00
20240101020240	9	19:00:00	21:00:00
20240101020240	10	21:00:00	04:00:00

4. ATUS Who File

This file includes codes that indicate who was present during each activity.

There is one record for each “who” code reported. Therefore, there will be one record for activities done alone and multiple records for activities with multiple people present. For some activities, no “who” codes are collected (such as sleeping and grooming); a value that indicates the activity was “out of universe” for the “who” question (-1) is filled in these situations.

A simplified example appears below. In the first activity (TUACTIVITY_N = 1), no “who” code information was collected because of the associated activity code. Only one person was with the respondent during the second activity, so there is one line for TUACTIVITY_N = 2. Three people were with the respondent during the third activity, so there are three lines for TUACTIVITY_N = 3. Two of those (TUWHO_CODE = 20 and 22) are members of the respondent's household and can be linked to the Roster file using TUCASEID and TULINENO.

The third (TUWHO_CODE = 51) is not a member of the respondent's household and thus does not have a positive value for TULINENO.

The actual ATUS Who file contains more variables for each line as well as many additional lines than the example below.

TUCASEID	TUACTIVITY_N	TUWHO_CODE	TULINENO
20240101020240	1	-1	-1
20240101020240	2	22	3
20240101020240	3	20	2
20240101020240	3	22	3
20240101020240	3	51	-1

5. ATUS Eldercare Roster File (new in 2011)

The ATUS Eldercare Roster file contains information about people for whom the respondent provided care. If the respondent indicated that she had provided eldercare more than once, during the past 3 to 4 months, additional information about each eldercare recipient is collected. (The time frame varied slightly by respondent because the question asked about care provided between the 1st of a reference month and the interview day.) There is one record for each recipient, up to a maximum of 5 records for each respondent. Information about the relationship of the recipient to the respondent, the age of the recipient, and the duration that care had been provided appear on the file.

A simplified example of the ATUS Eldercare Roster file appears below. The TUCASEID identifies each respondent providing eldercare, and the TULINENO identifies recipients in the household. A value of -1 for TULINENO indicates that the eldercare recipient does not live in the household. In the example below, TUCASEID 20240101020240 provided care to two persons not living in the household, TUCASEID 20240101020241 provided care to one person, who does live in the household, and TUCASEID 20240101020245 and TUCASEID 20240101020248 each provided care to one person. The actual ATUS Eldercare Roster file contains more variables and many additional lines.

TUCASEID	TULINENO	TEELWHO	TEAGE_EC	TEELDUR
20240101020240	-1	33	76	4
20240101020240	-1	34	80	4
20240101020241	2	20	72	4
20240101020245	-1	46	88	3
20240101020248	-1	55	65	2

6. ATUS Activity Summary File

The ATUS Activity Summary file contains information about the total number of minutes each respondent spent doing each activity. The file also includes selected variables from the ATUS Respondent, ATUS Roster, and ATUS-CPS files. **The Activity Summary file contains variables not described in this data dictionary. Variables beginning with a lower-case "t" correspond to specific activity codes; definitions for each activity code can be found in the 2024 Activity Lexicon (www.bls.gov/tus/lexicons/lexiconwex2024.pdf).**

There is one record for each ATUS respondent.

A simplified example of the ATUS Activity Summary file appears below. The variable TUCASEID is the unique identifier for each respondent and the variable TEAGE, which also appears on the ATUS Roster file, shows each respondent's age. The variable t010101 contains the total number of minutes each respondent spent doing activity 010101, "sleeping"; the variable t010102 contains the total number of minutes each respondent spent doing activity 010102, "sleeplessness."

The ATUS Activity Summary file contains more variables describing each activity as well as many more lines than the example below.

TUCASEID	TEAGE	t010101	t010102
20240101020240	26	480	0
20240101020241	53	430	30
20240101020242	76	457	0
20240101020243	16	600	0

Valid Values

Each variable has a number of valid values or a range of valid values. For example, the variable TESEX has two valid values: 1 for male and 2 for female. The variable TEAGE, on the other hand, has a range of valid values – any entry between 0 and 85 (except 81 through 84) is considered valid. Individual valid values or a range of valid values are listed under each variable in the data dictionary. A few variables have so many valid values that they are not included in the data dictionary; instead, they are provided in an appendix or a separate document. (References to these are included as a “Note” under the relevant variables in the data dictionary.) One example of such a variable is TEIO1ICD, which identifies the industry code of the respondent’s main job.

Many ATUS variables have the following possible valid values:

Value	Description
-1	Blank
-2	Don’t know
-3	Refused

Because so many variables have these possible values, they are not shown as valid entries for each variable.

TUCASEID, the primary identification number for ATUS, does not have either a list of valid values or a range of valid values.

ATUS Naming Conventions and Definitions

ATUS variables are named according to specified rules. Variables with a first character of “T” (for time use) were collected or created through the ATUS interview. Variables with any other first character (most often “P”, “G”, or “H”) were collected or created through the final CPS interview (conducted two to five months prior to the ATUS interview). All of the variables on the ATUS interview data files described in this dictionary begin with “T.”

The second and third characters of the name identify the type of variable, and the remaining characters consist of a descriptive name. The rules regarding the first two or three characters are described in the table below (note that the variables on the Activity Summary file that start with a lowercase “t” do not follow these rules):

Abbreviation	Variable Type	Definition
U	Unedited Variable	An unedited variable generally is produced by the Computer Assisted Telephone Interview (CATI) instrument, either collected or assigned during the interview. There are a few unedited variables that are computed by the processing system, such as the ATUS final weight (TUFINLWGT).
E	Edited Variable	An edited variable is one that has gone through an editing process (a process checking for consistency). Values of edited variables are almost always equal to values of the corresponding unedited variables. Data differ when a value is allocated or imputed by the processing system based on allocation rules specified in CPS or ATUS processing. Allocations are typically performed when the unedited variable contains a value of blank, "don't know," or "refused." An edited version of a variable exists only if that variable goes through an editing process. If there are no edits for a variable, then only an unedited version of that variable exists.
R	Recode	A recode is a variable calculated by the processing system from a combination of other variables on the file. For example, TRMJOCC1 is the major occupation code for the respondent's main job; this is not a response to a question but rather a variable that summarizes (or “groups”) the more finely detailed occupation variable TEIO1OCD. (Note that variables with second and third characters of “RT” are summary variables.)
RT	Summary Variable	These variables summarize the amount of time respondents spent with other people or did selected activities. For example, TRTALONE gives the total amount of time the respondent spent alone on the diary day. Variables that summarize the amount of time respondents spent with other people rely on “who” code information and therefore do not include activities for which no “who” code information was collected, such as sleeping.
X	Allocation Flag	Each edited variable has a corresponding allocation flag indicating the nature of the allocation. For example, if TUAGE is blank, TEAGE would be allocated, and this would be indicated by a TXAGE value of 41. See the section on allocation flags for the standard list of values.
XT	Summary Allocation Flag	Some summary variables have a corresponding XT variable, which is a 0-1 indicator of whether or not the summary variable contains allocated information. For example, a value of 1 in TXTCC indicates that TRTCC and TRTCC_LN contain allocated rather than calculated data.
T	Topcode Flag	These variables indicate whether another variable has been topcoded, or given a maximum value. The three topcode variables on the ATUS interview data files all relate to earnings.

Using these rules, variables can be more readily understood based on their names. For example, the variable TEAGE can be broken down as follows:

- The first character “T” indicates that this variable was collected or created through the ATUS interviews
- The second character “E” indicates that this variable went through an editing process; it also means that there will be a corresponding allocation flag, TXAGE, to indicate the nature of the allocation
- The final part of the variable name, “AGE,” is descriptive

Some questions asked in the ATUS interview allow for more than one response. For such multiple entry questions, there is a separate variable for each possible response. Each variable has the same descriptive name but a different (sequential) number. For example, respondents can provide up to six answers to the question “You said you have been trying to find work – how did you go about looking?” The variable names are TULKDK1, TULKDK2, TULKDK3, etc.

Not all ATUS variables are on the files. When there is an edited variable, the corresponding unedited variable is usually omitted from the files. This is typically done to protect the confidentiality of ATUS respondents as required by law. If an unedited variable is included on the files, then an edited version does not exist and the unedited version cannot be used to identify individual respondents.

Allocation Flags

For every edited variable (or all “E” variables), there is a corresponding allocation flag whose second character is “X.” All remaining characters of the two variables’ names are the same. For example, TXSEX is the allocation flag for TESEX.

All allocation flags (except for variables with the second and third characters of “XT”) have the following list of possible values:

0	Value – no change
1	Blank – no change
2	Don’t know – no change
3	Refused – no change
10	Value to value
11	Blank to value
12	Don’t know to value
13	Refused to value
20	Value to longitudinal value
21	Blank to longitudinal value
22	Don’t know to longitudinal value
23	Refused to longitudinal value
30	Value to allocated longitudinal value (unused)
31	Blank to allocated longitudinal value (unused)
32	Don’t know to allocated longitudinal value (unused)
33	Refused to allocated longitudinal value (unused)
40	Value to allocated value
41	Blank to allocated value
42	Don’t know to allocated value
43	Refused to allocated value
50	Value to blank
52	Don’t know to blank
53	Refused to blank

Each digit of these valid values identifies how and why edited variables were allocated.

The first digit indicates how the allocation was made to the “E” (or edited) variable.

First Digit	
0 or Blank	No change between “U” variable and “E” variable
1	“E” variable changed to a value
2	“E” variable changed to a longitudinal value (the corresponding value from the CPS data)
3	“E” variable changed to an allocated longitudinal value (the corresponding allocated value from CPS data) - unused
4	“E” variable changed to allocated value
5	“E” variable changed to a blank

The second variable indicates why the “U” variable was allocated, whether the value was changed, missing, don’t know, or refused.

Second Digit	
0	“U” variable was equal to some value
1	“U” variable was blank (or -1)
2	“U” variable was don’t know (or -2)
3	“U” variable was refused (or -3)

Two of the “X” allocation flags have more values than those listed above: TXAGE and TXAGE_EC. There are two additional values to indicate that TEAGE or TEAGE_EC has been topcoded or given a maximum value. These values are listed in the data dictionary.

Two other variables (TRWERNAL and TRHERNAL) indicate allocation and do not follow the “X” variable values; these variables have values of either 0 or 1, with 1 indicating that other variables (TRERNWA and TRERNHLY, respectively) have been allocated.

Additionally, the “XT” variables do not have the standard “X” variable values. Like the two variables indicated above, these variables all have values of either 0 or 1, with 1 indicating that another variable has been allocated.

Edited Universe

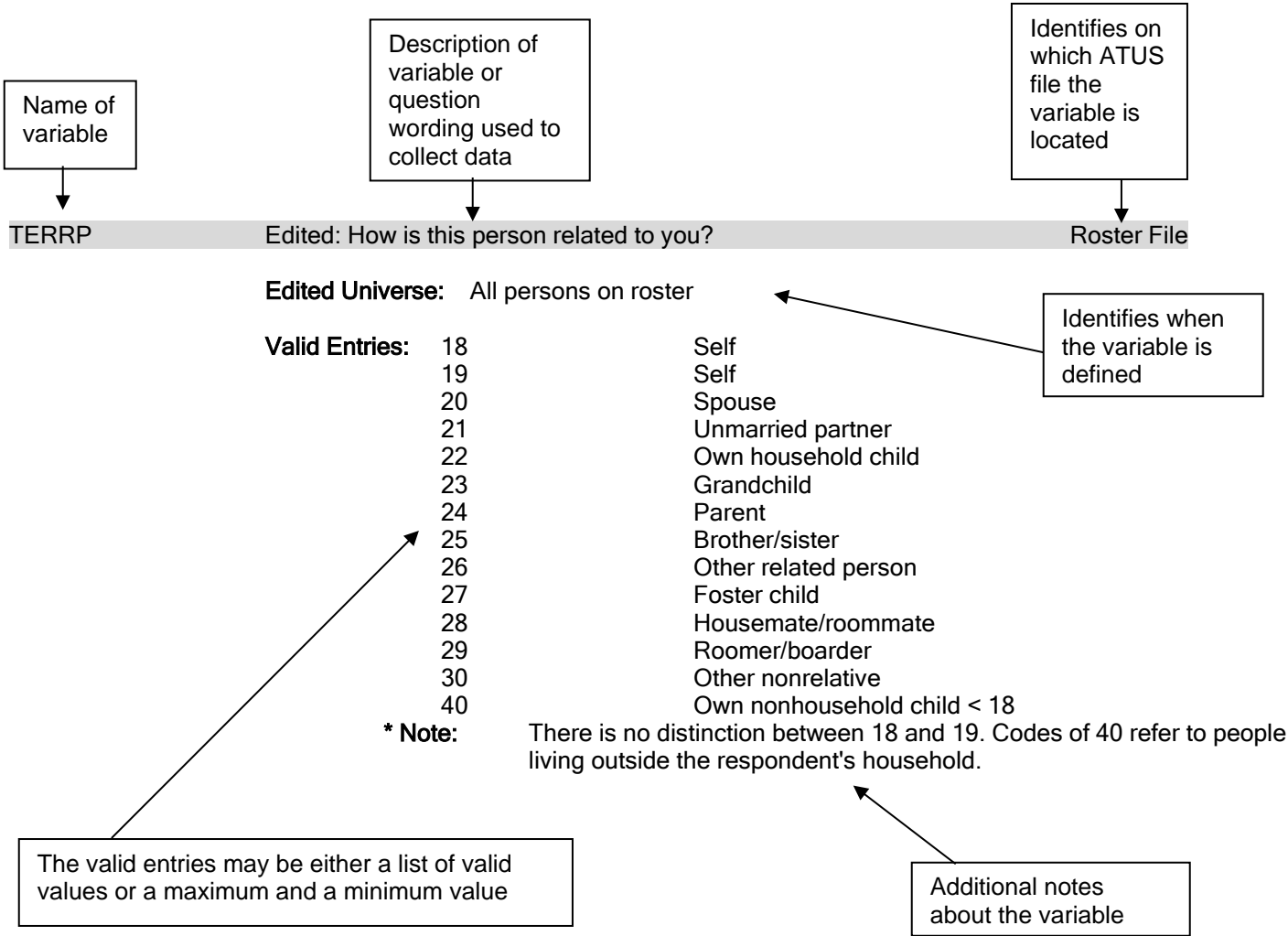
Edited variables and recodes are defined for certain universes, and these are listed in the data dictionary. For example, TEIO1OCD (occupation code) is only defined when the respondent is employed. Therefore, the universe for TEIO1OCD is TELFS = 1 or 2 (TELFs is the labor force status of the respondent, and values of 1 or 2 indicate that the respondent is employed).

Certain variables might initially appear to be the same because their descriptions are very similar. These variables are different in that they were asked of different groups of survey respondents. For example, the variables TEERNH1O and TEERNH2 both have the same question text of “Excluding overtime pay, tips, and commissions, what is your hourly rate of pay on your main job?” The difference in these two variables has to do with which respondents were asked each question. This can be determined by looking at the edited universes. TEERNH1O was asked of respondents with TEERNPER = 1, or those who said it was easiest to report their earnings hourly. TEERNH2, on the other hand, was asked of respondents with TEERNRT = 1, or those who said they were paid hourly but reported their earnings another way.

Organization of the Data Dictionary

Variables are listed in the data dictionary in alphabetical order.

Below is a sample entry from the ATUS interview data dictionary:



Frequently Used Variables

The ATUS files have many variables and users may sometimes have difficulty determining which variables to use. A list of the most commonly used ATUS variables is available at www.bls.gov/tus/other-documentation/freqvariables.pdf.

Linking ATUS Files

Each of the ATUS files contains useful information, but in order to produce most estimates, the files must be linked. All of the files contain the variable TUCASEID, which is the ATUS identification number. Two other variables that can be used for linking in conjunction with TUCASEID are TULINENO (person line number) and TUACTIVITY_N (activity line number). More information on linking ATUS files is available on the ATUS Web site at www.bls.gov/tus/other-documentation/howto.htm#linking.

For information on linking ATUS files to CPS files, see Appendix K-L of the ATUS User's Guide (www.bls.gov/tus/atususersguide.pdf).

Changes between years of ATUS data

Those wishing to combine multiple years of ATUS data should be aware of changes to ATUS survey methods between years—such as new, discontinued, and changed variables—as well as differences in activity codes between years. For a list of these changes, see the document describing ATUS changes (www.bls.gov/tus/other-documentation/changes.pdf) and the document describing Activity Coding Lexicon changes (www.bls.gov/tus/lexicons/lexiconchanges.pdf).

Statistical weights for the annual ATUS Data

For more information about ATUS population weights, why researchers should use them, and details about how the ATUS weighting method changed, see Chapter 7 of the ATUS User's Guide (www.bls.gov/tus/atususersguide.pdf).

2024 ATUS Data Dictionary: Public ATUS Interview Data

Name	Description		File
TEABSRSN	Edited: what was the main reason you were absent from your job last week?		Respondent File
	Edited Universe:	TELFS = 2	
	Valid Entries:	1	On layoff (temporary or indefinite)
		2	Slack work/business conditions
		3	Waiting for a new job to begin
		4	Vacation/personal days
		5	Own illness/injury/medical problems
		6	Childcare problems
		7	Other family/personal obligation
		8	Maternity/paternity leave
		9	Labor dispute
		10	Weather affected job
		11	School/training
		12	Civic/military duty
		13	Does not work in the business
		14	Other
Name	Description		File
TEAGE	Edited: age		Roster File, Activity Summary File
	Edited Universe:	All persons on roster	
	Valid Entries:	0 85	Min Value Max Value
	*Note	TEAGE is topcoded to 85. All those age 80 through 84 have TEAGE = 80. Those age 85 or above have TEAGE = 85. TXAGE indicates topcoding.	
Name	Description		File
TEAGE_EC	Edited: age of eldercare recipient		EC Roster File
	Edited Universe:	All eldercare recipients	
	Valid Entries:	0 85	Min Value Max Value
	*Note	<p>For household members, this is the age on the diary day; for nonhousehold members it's the person's age on the first of the month for the month corresponding to 3 months before the interview.</p> <p>TEAGE_EC is topcoded to 85. All those age 80 through 84 have TEAGE_EC = 80. Those age 85 or above have TEAGE_EC = 85. TXAGE_EC indicates topcoding.</p>	

2024 ATUS Data Dictionary: Public ATUS Interview Data

Name	Description		File
TEELDUR	Edited: how long have you provided care to [NAME]?		EC Roster File
	Edited Universe:	All eldercare recipients	
	Valid Entries:	1	0 to 5 months
		2	6 to 11 months
		3	1 year
		4	More than a year
	*Note	The name is filled with the information collected from the TUELWHO question	

2024 ATUS Data Dictionary: Public ATUS Interview Data

Name	Description			File
TEELWHO	Edited: who did you give this care to?			EC Roster File
	Edited Universe:	All eldercare recipients		
	Valid Entries:	20	Spouse	
		21	Unmarried partner	
		22	Own household child	
		23	Grandchild	
		24	Parent	
		25	Brother/sister	
		26	Other related person	
		27	Foster child	
		28	Housemate/roommate	
		29	Roomer/boarder	
		30	Other nonrelative	
		33	Mother	
		34	Father	
		35	Spouse	
		36	Partner	
		37	Brother	
		38	Sister	
		39	Mother-in-law	
		40	Father-in-law	
		41	Aunt	
		42	Uncle	
		43	Friend	
		44	Neighbor	
		47	Grandmother/Great-grandmother	
		48	Grandfather/Great-grandfather	
		49	Other related person	
		56	Other non-relative	
	*Note	All codes of 30 or less refer to people living inside of the respondent's household.		
Name	Description			File
TEELYRS	Edited: how many years have you provided care (to this person)?			EC Roster File
	Edited Universe:	TEELDUR=4		
	Valid Entries:	1	Min Value	
		99	Max Value	

2024 ATUS Data Dictionary: Public ATUS Interview Data

Name	Description	File
TEERN	Edited: total weekly earnings from overtime pay, tips, and commissions (2 implied decimals)	Respondent File
	Edited Universe: TEERNUOT = 1 and TEERNPER = 1	
	Valid Entries: 0 288461	Min Value Max Value
Name	Description	File
TEERNH10	Edited: excluding overtime pay, tips, and commissions, what is your hourly rate of pay on your main job? (2 implied decimals)	Respondent File
	Edited Universe: TEERNPER = 1	
	Valid Entries: 0 9999	Min Value Max Value
Name	Description	File
TEERNH2	Edited: excluding overtime pay, tips, and commissions, what is your hourly rate of pay on your main job? (2 implied decimals)	Respondent File
	Edited Universe: TEERNRT = 1	
	Valid Entries: 0 9999	Min Value Max Value
Name	Description	File
TEERNHRO	Edited: how many hours do you usually work per week at this rate?	Respondent File
	Edited Universe: TEERNH10 >= 0	
	Valid Entries: 1 99	Min Value Max Value
Name	Description	File
TEERNHRY	Edited: hourly/non-hourly status	Respondent File
	Edited Universe: TELFS = 1 or 2 and TEIO1COW = 1 - 5	
	Valid Entries: 1	Paid hourly
	2	Not paid hourly

2024 ATUS Data Dictionary: Public ATUS Interview Data

Name	Description		File
TEERNPER	Edited: for your main job, what is the easiest way for you to report your total earnings before taxes or other deductions: hourly, weekly, annually, or some other way?		Respondent File
	Edited Universe:	TELF5 = 1 or 2 and TEIO1COW = 1 - 5	
	Valid Entries:	1	Hourly
		2	Weekly
		3	Bi-weekly
		4	Twice monthly
		5	Monthly
		6	Annually
		7	Other
Name	Description		File
TEERNRT	Edited: even though you told me it is easier to report your earnings another way, are you paid at an hourly rate on this job?		Respondent File
	Edited Universe:	TEERNPER = 2 - 7	
	Valid Entries:	1	Yes
		2	No
Name	Description		File
TEERNUOT	Edited: do you usually receive overtime pay, tips, or commissions at your main job?		Respondent File
	Edited Universe:	TELF5 = 1 or 2 and TEIO1COW = 1 - 5	
	Valid Entries:	1	Yes
		2	No
Name	Description		File
TEERNWKP	Edited: how many weeks a year do you get paid?		Respondent File
	Edited Universe:	TEERNPER = 6	
	Valid Entries:	1 52	Min Value Max Value
Name	Description		File
TEHRFTPT	Edited: do you usually work more than 35 hours per week at your job(s)/family business?		Respondent File
	Edited Universe:	TEHRUSL1 = -4 or TEHRUSL2 = -4	
	Valid Entries:	1	Yes
		2	No
		3	Hours vary

2024 ATUS Data Dictionary: Public ATUS Interview Data

Name	Description		File
TEHRUSL1	Edited: how many hours per week do you usually work at your main job?		Respondent File
	Edited Universe:	TELFS = 1 or 2	
	Valid Entries:	0 999	Min Value Max Value
	*Note	-4 (Hours vary) is also valid for TEHRUSL1	
Name	Description		File
TEHRUSL2	Edited: how many hours per week do you usually work at your other job(s)?		Respondent File
	Edited Universe:	TELFS = 1 or 2 and TEMJOT = 1	
	Valid Entries:	0 999	Min Value Max Value
	*Note	-4 (Hours vary) is also valid for TEHRUSL2	
Name	Description		File
TEHRUSLT	Edited: total hours usually worked per week (sum of TEHRUSL1 and TEHRUSL2)		Respondent File, Activity Summary File
	Edited Universe:	TELFS = 1 or 2	
	Valid Entries:	0 999	Min Value Max Value
	*Note	-4 (Hours vary) is also valid for TEHRUSLT	
Name	Description		File
TEIO1COW	Edited: individual class of worker code (main job)		Respondent File
	Edited Universe:	TELFS = 1 or 2	
	Valid Entries:	1	Government, federal
		2	Government, state
		3	Government, local
		4	Private, for profit
		5	Private, nonprofit
		6	Self-employed, incorporated
		7	Self-employed, unincorporated
		8	Without pay

2024 ATUS Data Dictionary: Public ATUS Interview Data

Name	Description	File
TEIO1ICD	Edited: industry code (main job)	Respondent File
	Edited Universe:	TELFS = 1 or 2
	Valid Entries:	0 9999 Min Value Max Value
	*Note	Beginning in the January 2020 ATUS, industry data were classified using the 2017 Census Industry Classification system. This system replaced the 2012 Census Industry Classification system. Refer to Appendix A for the list of 2017 Census Industry Classification codes.

Name	Description	File
TEIO1OCD	Edited: occupation code (main job)	Respondent File
	Edited Universe:	TELFS = 1 or 2
	Valid Entries:	0 9999 Min Value Max Value
	*Note	Beginning in the January 2020 ATUS, occupation data were classified using the 2018 Census Occupation Classification system. This system replaced the 2010 Census Occupation Classification system. Occupation data for 2020 and later are not strictly comparable with years prior to 2020. Refer to Appendix A for the list of 2018 Census Occupation Classification codes.

Name	Description	File
TELAYAVL	Edited: could you have returned to work in the last seven days if you had been recalled?	Respondent File
	Edited Universe:	TELFS = 3
	Valid Entries:	1 Yes
		2 No

Name	Description	File
TELAYLK	Edited: even though you expect to be called back to work, have you been looking for work during the last four weeks?	Respondent File
	Edited Universe:	TELAYAVL = 1 or 2
	Valid Entries:	1 Yes
		2 No

2024 ATUS Data Dictionary: Public ATUS Interview Data

Name	Description		File
TELF5	Edited: labor force status		Respondent File, Activity Summary File
	Edited Universe:	All respondents	
	Valid Entries:	1	Employed - at work
		2	Employed - absent
		3	Unemployed - on layoff
		4	Unemployed - looking
		5	Not in labor force
Name	Description		File
TELKAVL	Edited: could you have started a job in the last seven days if one had been offered?		Respondent File
	Edited Universe:	TELKM1 = 1 - 13	
	Valid Entries:	1	Yes
		2	No
Name	Description		File
TELKM1	Edited: what are all of the things you have done to find work during the last 4 weeks? (first method)		Respondent File
	Edited Universe:	TELF5 = 4	
	Valid Entries:	1	Contacted employer directly/interview
		2	Contacted public employment agency
		3	Contacted private employment agency
		4	Contacted friends or relatives
		5	Contacted school/university employment center
		6	Sent out resumes/filled out applications
		7	Checked union/professional registers
		8	Placed or answered ads
		9	Other active
		10	Looked at ads
		11	Attended job training programs/courses
		12	Nothing
		13	Other passive
	*Note	In order to research job search methods, users must combine all fields TELKM1, TULKM2 - TULKM6, TULKDK1 - TULKDK6, and TULKPS1 - TULKPS6	

2024 ATUS Data Dictionary: Public ATUS Interview Data

Name	Description		File
TEMJOT	Edited: In the last seven days did you have more than one job?		Respondent File, Activity Summary File
	Edited Universe:	TELFS = 1 or 2	
	Valid Entries:	1	Yes
		2	No
Name	Description		File
TERET1	Edited: do you currently want a job, either full or part time?		Respondent File
	Edited Universe:	TELFS = 5 and (TURETOT = 1 or TUFABS = 3 or TUFWK = 3 or TULAY = 3) and TEAGE >= 50	
	Valid Entries:	1	Yes or maybe/it depends
		2	No
		3	Has a job
Name	Description		File
TERRP	Edited: how is this person related to you?		Roster File
	Edited Universe:	All persons on roster	
	Valid Entries:	18	Self
		19	Self
		20	Spouse
		21	Unmarried partner
		22	Own household child
		23	Grandchild
		24	Parent
		25	Brother/sister
		26	Other relative
		27	Foster child
		28	Housemate/roommate
		29	Roomer/boarder
		30	Other nonrelative
		40	Own nonhousehold child < 18
	*Note	There is no distinction between 18 and 19. Codes of 40 refer to people living outside the respondent's household.	

2024 ATUS Data Dictionary: Public ATUS Interview Data

Name	Description			File
TESCHENR	Edited: are you enrolled in high school, college, or university?			Respondent File, Activity Summary File
	Edited Universe:	Respondents aged 15 to 49		
	Valid Entries:	1	Yes	
		2	No	
Name	Description			File
TESCHFT	Edited: are you enrolled as a full-time or part-time student?			Respondent File
	Edited Universe:	TESCHENR = 1		
	Valid Entries:	1	Full time	
		2	Part time	
Name	Description			File
TESCHLVL	Edited: would that be high school, college, or university?			Respondent File, Activity Summary File
	Edited Universe:	TESCHENR = 1		
	Valid Entries:	1	High school	
		2	College or university	
Name	Description			File
TESEX	Edited: sex			Roster File, Activity Summary File
	Edited Universe:	All persons on roster		
	Valid Entries:	1	Male	
		2	Female	
Name	Description			File
TESPEMPNOT	Edited: employment status of spouse or unmarried partner			Respondent File, Activity Summary File
	Edited Universe:	TRSPPRES = 1 or 2		
	Valid Entries:	1	Employed	
		2	Not employed	
Name	Description			File
TESPUHRS	Edited: usual hours of work of spouse or unmarried partner			Respondent File
	Edited Universe:	TESPEMPNOT = 1		
	Valid Entries:	0 99	Min Value Max Value	
	*Note	-4 (Hours vary) is also valid for TESPUEHS		

2024 ATUS Data Dictionary: Public ATUS Interview Data

Name	Description		File
TEWHERE	Edited: where were you during the activity?		Activity File
	Edited Universe:	All activities (except those noted below)	
	Valid Entries:	1	Respondent's home or yard
		2	Respondent's workplace
		3	Someone else's home
		4	Restaurant or bar
		5	Place of worship
		6	Grocery store
		7	Other store/mall
		8	School
		9	Outdoors away from home
		10	Library
		11	Other place
		12	Car, truck, or motorcycle (driver)
		13	Car, truck, or motorcycle (passenger)
		14	Walking
		15	Bus
		16	Subway/train
		17	Bicycle
		18	Boat/ferry
		19	Taxi/limousine service
		20	Airplane
		21	Other mode of transportation
		30	Bank
		31	Gym/health club
		32	Post Office
		89	Unspecified place
		99	Unspecified mode of transportation
	*Note	Not collected for activities with activity codes of 0101xx, 0102xx, 0104xx, 500105, or 500106.	
Name	Description		File
TRCHILDNUM	Number of household children < 18		Respondent File, Activity Summary File
	Edited Universe:	All respondents	
	Valid Entries:	0	Min Value
		30	Max Value

2024 ATUS Data Dictionary: Public ATUS Interview Data

Name	Description		File
TRCODE	Six digit activity code		Activity File
	Edited Universe:	All activities	
	*Note	This variable includes information from TUTIER1CODE, TUTIER2CODE, and TUTIER3CODE.	
Name	Description		File
TRDPFTPT	Full time or part time employment status of respondent		Respondent File, Activity Summary File
	Edited Universe:	TELFS = 1 or 2	
	Valid Entries:	1	Full time
		2	Part time
Name	Description		File
TRDTIND1	Detailed industry recode (main job)		Respondent File
	Edited Universe:	TELFS = 1 or 2	
	Valid Entries:	1 51	Min Value Max Value
	*Note	Beginning in the January 2020 ATUS, industry data were classified using the 2017 Census Industry Classification system. This system replaced the 2012 Census Industry Classification system. Refer to Appendix A for the list of 2017 Census Industry Classification codes.	

2024 ATUS Data Dictionary: Public ATUS Interview Data

Name	Description		File
TRDTOCC1	Detailed occupation recode (main job)		Respondent File
	Edited Universe:	TELFS = 1 or 2	
	Valid Entries:	1	Management occupations
		2	Business and financial operations occupations
		3	Computer and mathematical occupations
		4	Architecture and engineering occupations
		5	Life, physical, and social science occupations
		6	Community and social service occupations
		7	Legal occupations
		8	Educational instruction and library occupations
		9	Arts, design, entertainment, sports, and media occupations
		10	Healthcare practitioner and technical occupations
		11	Healthcare support occupations
		12	Protective service occupations
		13	Food preparation and serving related occupations
		14	Building and grounds cleaning and maintenance occupations
		15	Personal care and service occupations
		16	Sales and related occupations
		17	Office and administrative support occupations
		18	Farming, fishing, and forestry occupations
		19	Construction and extraction occupations
		20	Installation, maintenance, and repair occupations
		21	Production occupations
		22	Transportation and material moving occupations
	*Note	<p>Beginning in the January 2020 ATUS, occupation data were classified using the 2018 Census Occupation Classification system. This system replaced the 2010 Census Occupation Classification system.</p> <p>Occupation data for 2020 and later are not strictly comparable with years prior to 2020.</p> <p>Refer to Appendix A for the list of 2018 Census Occupation Classification codes.</p>	
Name	Description		File
TRELHH	Eldercare recipient is a household member		EC Roster File
	Edited Universe:	All Eldercare recipients	
	Valid Entries:	0	Recipient is not a household member
		1	Recipient is a household member

2024 ATUS Data Dictionary: Public ATUS Interview Data

Name	Description		File
TRERNHLY	Hourly earnings at main job (2 implied decimals)		Respondent File
	Edited Universe:	TEERNHRY = 1	
	Valid Entries:	0 9999	Min Value Max Value
	*Note	This is the most-frequently used hourly earnings variable in ATUS and is only defined for employed persons who say they work hourly and are not self-employed or without pay. The allocation flag for this variable is TRHERNAL. Subject to topcoding based on the entry in TEERNHRO such that TEERNHRO x TRERNHLY <= 2884.61; topcoding is indicated in TTHR.	
Name	Description		File
TRERNUPD	Earnings update flag		Respondent File
	Edited Universe:	TELF5 = 1 or 2 and TEIO1COW = 1 - 5	
	Valid Entries:	0	Earnings carried forward from final CPS interview
		1	Earnings updated in ATUS
Name	Description		File
TRERNWA	Weekly earnings at main job (2 implied decimals)		Respondent File, Activity Summary File
	Edited Universe:	TELF5 = 1 or 2 and TEIO1COW = 1 - 5	
	Valid Entries:	0 9999999	Min Value Max Value
	*Note	This is the most-frequently used earnings variable in ATUS and is defined for all employed persons who are not self-employed or without pay. The allocation flag for this variable is TRWERNAL. Subject to topcoding (the maximum value cannot be greater than 2884.61); topcoding is indicated in TTOT, TTWK, and TTHR. Starting in June 2024, new rules were applied to TRERNWA such that the topcode values generally correspond to the top 3 percent in a given month.	
Name	Description		File
TRHERNAL	TRERNHLY: allocation flag		Respondent File
	Edited Universe:	TEERNHRY = 1	
	Valid Entries:	0	TRERNHLY does not contain allocated information
		1	TRERNHLY contains allocated information
Name	Description		File
TRHHCHILD	Presence of household children < 18		Respondent File
	Edited Universe:	All respondents	
	Valid Entries:	1	Yes
		2	No

2024 ATUS Data Dictionary: Public ATUS Interview Data

Name	Description		File
TRHOLIDAY	Flag to indicate if diary day was a holiday		Respondent File, Activity Summary File
	Edited Universe:	All respondents	
	Valid Entries:	0	Diary day was not a holiday
		1	Diary day was a holiday
	*Note	New Year's Day, Easter, Memorial Day, the Fourth of July, Labor Day, Thanksgiving Day, and Christmas Day are identified as holidays. If the interviewers did not work on the day following the holiday, data about that holiday were not collected.	
Name	Description		File
TRIMIND1	Intermediate industry recode (main job)		Respondent File
	Edited Universe:	TELFs = 1 or 2	
	Valid Entries:	1	Agriculture, forestry, fishing, and hunting
		2	Mining
		3	Construction
		4	Manufacturing - durable goods
		5	Manufacturing - non-durable goods
		6	Wholesale trade
		7	Retail trade
		8	Transportation and warehousing
		9	Utilities
		10	Information
		11	Finance and insurance
		12	Real estate and rental and leasing
		13	Professional, scientific, and technical services
		14	Management, administrative and waste management services
		15	Educational services
		16	Health care and social assistance services
		17	Arts, entertainment, and recreation
		18	Accommodation and food services
		19	Private households
		20	Other services, except private households
		21	Public administration
	*Note	Beginning in the January 2020 ATUS, industry data were classified using the 2017 Census Industry Classification system. This system replaced the 2012 Census Industry Classification system.	

2024 ATUS Data Dictionary: Public ATUS Interview Data

Name	Description		File
TRLVMODR	Leave module respondent		Respondent File
	Edited Universe:	TEIO1COW = 1 - 5	
	Valid Entries:	0	Respondent was eligible for the Leave module, but did not complete it.
		1	Respondent completed Leave module.
Name	Description		File
TRMJIND1	Major industry recode (main job)		Respondent File
	Edited Universe:	TELF5 = 1 or 2	
	Valid Entries:	1	Agriculture, forestry, fishing, and hunting
		2	Mining
		3	Construction
		4	Manufacturing
		5	Wholesale and retail trade
		6	Transportation and utilities
		7	Information
		8	Financial activities
		9	Professional and business services
		10	Educational and health services
		11	Leisure and hospitality
		12	Other services
		13	Public administration
	*Note	Beginning in the January 2020 ATUS, industry data were classified using the 2017 Census Industry Classification system. This system replaced the 2012 Census Industry Classification system.	

2024 ATUS Data Dictionary: Public ATUS Interview Data

Name	Description		File
TRMJOC1	Major occupation recode (main job)		Respondent File
	Edited Universe:	TELFS = 1 or 2	
	Valid Entries:	1	Management, business, and financial occupations
		2	Professional and related occupations
		3	Service occupations
		4	Sales and related occupations
		5	Office and administrative support occupations
		6	Farming, fishing, and forestry occupations
		7	Construction and extraction occupations
		8	Installation, maintenance, and repair occupations
		9	Production occupations
		10	Transportation and material moving occupations
	*Note	Beginning in the January 2020 ATUS, occupation data were classified using the 2018 Census Occupation Classification system. This system replaced the 2010 Census Occupation Classification system. Occupation data for 2020 and later are not strictly comparable with years prior to 2020.	
Name	Description		File
TRMJOCGR	Major occupation category (main job)		Respondent File
	Edited Universe:	TELFS = 1 or 2	
	Valid Entries:	1	Management, professional, and related occupations
		2	Service occupations
		3	Sales and office occupations
		4	Farming, fishing, and forestry occupations
		5	Construction and maintenance occupations
		6	Production, transportation, and material moving occupations
	*Note	Beginning in the January 2020 ATUS, occupation data were classified using the 2018 Census Occupation Classification system. This system replaced the 2010 Census Occupation Classification system. Occupation data for 2020 and later are not strictly comparable with years prior to 2020.	
Name	Description		File
TRNHCHILD	Presence of own non-household child < 18		Respondent File
	Edited Universe:	All respondents	
	Valid Entries:	1	Yes
		2	No

2024 ATUS Data Dictionary: Public ATUS Interview Data

Name	Description		File
TRNUMHOU	Number of people living in respondent's household		Respondent File
	Edited Universe:	All respondents	
	Valid Entries:	1 30	Min Value Max Value
Name	Description		File
TROHHCHILD	Presence of own household children < 18		Respondent File
	Edited Universe:	All respondents	
	Valid Entries:	1	Yes
		2	No
Name	Description		File
TRSPFTPT	Full time or part time employment status of spouse or unmarried partner		Respondent File, Activity Summary File
	Edited Universe:	TESPEMPNOT = 1	
	Valid Entries:	1	Full time
		2	Part time
		3	Hours vary
Name	Description		File
TRSPPRES	Presence of the respondent's spouse or unmarried partner in the household		Respondent File, Activity Summary File
	Edited Universe:	All respondents	
	Valid Entries:	1	Spouse present
		2	Unmarried partner present
		3	No spouse or unmarried partner present
Name	Description		File
TRTALONE	Total nonwork-related time respondent spent alone (in minutes)		Respondent File
	Edited Universe:	All respondents	
	Valid Entries:	0 1440	Min Value Max Value
	*Note	This variable is computed using TUWHO_CODE information; time spent working and all activities for which who information is not collected, such as sleeping, are omitted from the calculation	

2024 ATUS Data Dictionary: Public ATUS Interview Data

Name	Description		File
TRTALONE_WK	Total work- and nonwork-related time respondent spent alone (in minutes)		Respondent File
	Edited Universe:	All respondents	
	Valid Entries:	0 1440	Min Value Max Value
	*Note	This variable is computed using TUWHO_CODE information; all activities for which who information is not collected, such as sleeping, are excluded from the calculation	
Name	Description		File
TRTCC	Total time spent during diary day providing secondary childcare for household and own nonhousehold children < 13 (in minutes)		Respondent File
	Edited Universe:	All respondents	
	Valid Entries:	0 1440	Min Value Max Value
	*Note	TRTCC is the sum of all values of TRTCC_LN for each TUCASEID	
Name	Description		File
TRTCC_LN	Total time spent during activity providing secondary child care for household and own nonhousehold children < 13 (in minutes)		Activity File
	Edited Universe:	All activities for respondents who have at least one household or own nonhousehold child < 13	
	Valid Entries:	0 1440	Min Value Max Value
	*Note	TRTCC_LN is the maximum for the activity of the following variables: TRTOHH_LN, TRTNOHH_LN, and TRTONHH_LN	
Name	Description		File
TRTCCC	Total nonwork-related time respondent spent with customers, clients, and coworkers (in minutes)		Respondent File
	Edited Universe:	All respondents	
	Valid Entries:	0 1440	Min Value Max Value
	*Note	This variable is computed using TUWHO_CODE information; time spent working and all activities for which who information is not collected, such as sleeping, are omitted from the calculation. TUWHO_CODE = (59, 60, 61, or 62) is included in this calculation (others may be present)	
Name	Description		File
TRTCCC_WK	Total work- and nonwork-related time respondent spent with customers, clients, and coworkers (in minutes)		Respondent File
	Edited Universe:	All respondents	
	Valid Entries:	0 1440	Min Value Max Value
	*Note	This variable is computed using TUWHO_CODE information; all activities for which who information is not collected are omitted from the calculation. TUWHO_CODE = (59, 60, 61, or 62) is included in this calculation (others may be present)	

2024 ATUS Data Dictionary: Public ATUS Interview Data

Name	Description		File
TRTCCTOT	Total time spent during diary day providing secondary childcare for all children < 13 (in minutes)		Respondent File
	Edited Universe:	All respondents	
	Valid Entries:	0 1440	Min Value Max Value
	*Note	TRTCCTOT is the sum of all values of TRTCCTOT_LN for each TUCASEID	
Name	Description		File
TRTCCTOT_LN	Total time spent during activity providing secondary childcare for all children < 13 (in minutes)		Activity File
	Edited Universe:	All activities	
	Valid Entries:	0 1440	Min Value Max Value
	*Note	TRTCCTOT_LN is the maximum for the activity of the following variables: TRTOHH_LN, TRTNOHH_LN, TRTONHH_LN, and TRTCOC_LN	
Name	Description		File
TRTCHILD	Total nonwork-related time respondent spent with household or nonhousehold children < 18 (in minutes)		Respondent File
	Edited Universe:	All respondents	
	Valid Entries:	0 1440	Min Value Max Value
	*Note	This variable is computed using TUWHO_CODE information; time spent working and all activities for which who information is not collected, such as sleeping, are omitted from the calculation	
Name	Description		File
TRTCOC	Total time spent during diary day providing secondary childcare for nonown, nonhousehold children < 13 (in minutes)		Respondent File
	Edited Universe:	All respondents	
	Valid Entries:	0 1440	Min Value Max Value
	*Note	TRTCOC is the sum of all values of TRTCOC_LN for each TUCASEID	
Name	Description		File
TRTCOC_LN	Total time spent during activity providing secondary child care for nonown, nonhousehold children <13 (in minutes)		Activity File
	Edited Universe:	All activities	
	Valid Entries:	0 1440	Min Value Max Value
	*Note	TRTCOC_LN is calculated using TUCC8. It does not include activities with activity codes of 0101xx, 0301xx, 0302xx, 0303xx, 0401xx, 0402xx, 0403xx, 180301, 180302, 180303, 180401, 180402, or 180403. TXTCOC is the allocation flag for this variable.	

2024 ATUS Data Dictionary: Public ATUS Interview Data

Name	Description		File
TRTEC	Total time spent providing eldercare (in minutes)		Respondent File, Activity Summary File
	Edited Universe:	TUECYTD=1	
	Valid Entries:	0 1440	Min Value Max Value
	*Note	TRTEC is the sum of all values of TRTEC_LN for each tucaseid. Excludes time spent in activities with codes = 01xxxx or 0805xx.	
Name	Description		File
TRTEC_LN	Time spent providing eldercare by activity (in minutes)		Activity File
	Edited Universe:	TUEC24 = 1 or 96	
	Valid Entries:	0 1440	Min Value Max Value
	*Note	Excludes time spent in activities with codes = 01xxxx or 0805xx	
Name	Description		File
TRTFAMILY	Total nonwork-related time respondent spent with family members (in minutes)		Respondent File
	Edited Universe:	All respondents	
	Valid Entries:	0 1440	Min Value Max Value
	*Note	This variable is computed using TUWHO_CODE information; time spent working and all activities for which who information is not collected, such as sleeping, are omitted from the calculation	
Name	Description		File
TRTFRIEND	Total nonwork-related time respondent spent with friends (in minutes)		Respondent File
	Edited Universe:	All respondents	
	Valid Entries:	0 1440	Min Value Max Value
	*Note	This variable is computed using TUWHO_CODE information; time spent working and all activities for which who information is not collected, such as sleeping, are omitted from the calculation	
Name	Description		File
TRTHH	Total time spent during diary day providing secondary childcare for household children < 13 (in minutes)		Respondent File, Activity Summary File
	Edited Universe:	All respondents	
	Valid Entries:	0 1440	Min Value Max Value
	*Note	TRTHH is the sum of all values of TRTHH_LN for each TUCASEID	

2024 ATUS Data Dictionary: Public ATUS Interview Data

Name	Description	File
TRTHH_LN	Total time spent during activity providing secondary childcare for household children < 13 (in minutes)	Activity File
	Edited Universe:	All activities for respondents with at least one household child < 13
	Valid Entries:	0 1440 Min Value Max Value
	*Note	TRTHH_LN is the maximum for the activity of the following variables: TRTOHH_LN and TRTNOHH_LN
Name	Description	File
TRTHHFAMILY	Total nonwork-related time respondent spent with household family members (in minutes)	Respondent File
	Edited Universe:	All respondents
	Valid Entries:	0 1440 Min Value Max Value
	*Note	This variable is computed using TUWHO_CODE information; time spent working and all activities for which who information is not collected, such as sleeping, are omitted from the calculation
Name	Description	File
TRTIER2	First and second activity tiers	Activity File
	Edited Universe:	All activities
	*Note	This variable includes information from TUTIER1CODE and TUTIER2CODE
Name	Description	File
TRTNOCHILD	Total nonwork-related time respondent spent with nonown children < 18 (in minutes)	Respondent File
	Edited Universe:	All respondents
	Valid Entries:	0 1440 Min Value Max Value
	*Note	This variable is computed using TUWHO_CODE information; time spent working and all activities for which who information is not collected, such as sleeping, are omitted from the calculation
Name	Description	File
TRTNOHH	Total time spent during diary day providing secondary childcare for nonown household children < 13 (in minutes)	Respondent File
	Edited Universe:	All respondents
	Valid Entries:	0 1440 Min Value Max Value
	*Note	TRTNOHH is the sum of all values of TRTNOHH_LN for each TUCASEID

2024 ATUS Data Dictionary: Public ATUS Interview Data

Name	Description		File
TRTNOHH_LN	Total time spent during activity providing secondary childcare for nonown household children < 13 (in minutes)		Activity File
	Edited Universe:	All activities for respondents with at least one nonown household child < 13	
	Valid Entries:	0 1440	Min Value Max Value
	*Note	TRTNOHH_LN is calculated using TUCC5B. It does not include activities with activity codes of 0101xx, 0301xx, 0302xx, 0303xx, 180301, 180302, or 180303. It also does not include any activity or part of any activity in which no household child was awake (determined by TUCC2 and TUCC4). TXTNOHH is the allocation flag for this variable.	
Name	Description		File
TRTO	Total time spent during diary day providing secondary childcare for own children < 13 (in minutes)		Respondent File
	Edited Universe:	All respondents	
	Valid Entries:	0 1440	Min Value Max Value
	*Note	TRTO is the sum of all values of TRTO_LN for each TUCASEID	
Name	Description		File
TRTO_LN	Total time spent during activity providing secondary childcare for own children < 13 (in minutes)		Activity File
	Edited Universe:	All activities for respondents with at least one own child < 13	
	Valid Entries:	0 1440	Min Value Max Value
	*Note	TRTO_LN is the maximum for the activity of the following variables: TRTOHH_LN and TRTONHH_LN	
Name	Description		File
TRTOHH	Total time spent during diary day providing secondary childcare for own household children < 13 (in minutes)		Respondent File
	Edited Universe:	All respondents	
	Valid Entries:	0 1440	Min Value Max Value
	*Note	TRTOHH is the sum of all values of TRTOHH_LN for each TUCASEID	
Name	Description		File
TRTOHH_LN	Total time spent during activity providing secondary childcare for own household children < 13 (in minutes)		Activity File
	Edited Universe:	All activities for respondents with at least one own household child < 13	
	Valid Entries:	0 1440	Min Value Max Value
	*Note	TRTOHH_LN is calculated using TUCC5. It does not include activities with activity codes of 0101xx, 0301xx, 0302xx, 0303xx, 180301, 180302, or 180303. It also does not include any activity or part of any activity in which no household child was awake (determined by TUCC2 and TUCC4). TXTOHH is the allocation flag for this variable.	

2024 ATUS Data Dictionary: Public ATUS Interview Data

Name	Description		File
TRTOHHCHILD	Total nonwork-related time respondent spent with own household children < 18 (in minutes)		Respondent File
	Edited Universe:	All respondents	
	Valid Entries:	0 1440	Min Value Max Value
	*Note	This variable is computed using TUWHO_CODE information; time spent working and all activities for which who information is not collected, such as sleeping, are omitted from the calculation	
Name	Description		File
TRTONHH	Total time spent during diary day providing secondary childcare for own nonhousehold children < 13 (in minutes)		Respondent File
	Edited Universe:	All respondents	
	Valid Entries:	0 1440	Min Value Max Value
	*Note	TRTONHH is the sum of all values of TRTONHH_LN for each TUCASEID	
Name	Description		File
TRTONHH_LN	Total time spent during activity providing secondary childcare for own nonhousehold children < 13 (in minutes)		Activity File
	Edited Universe:	All activities for respondents with at least one own nonhousehold child < 13	
	Valid Entries:	0 1440	Min Value Max Value
	*Note	TRTONHH_LN is calculated using TUCC7. It does not include activities with activity codes of 0101xx, 0301xx, 0302xx, 0303xx, 0401xx, 0402xx, 0403xx, 180301, 180302, 180303, 180401, 180402, or 180403. TXTONHH is the allocation flag for this variable.	
Name	Description		File
TRTONHHCHILD	Total nonwork-related time respondent spent with own nonhousehold children < 18 (in minutes)		Respondent File
	Edited Universe:	All respondents	
	Valid Entries:	0 1440	Min Value Max Value
	*Note	This variable is computed using TUWHO_CODE information; time spent working and all activities for which who information is not collected, such as sleeping, are omitted from the calculation	
Name	Description		File
TRTSPONLY	Total nonwork-related time respondent spent with spouse only (in minutes)		Respondent File
	Edited Universe:	All respondents	
	Valid Entries:	0 1440	Min Value Max Value
	*Note	This variable is computed using TUWHO_CODE information; time spent working and all activities for which who information is not collected, such as sleeping, are omitted from the calculation	

2024 ATUS Data Dictionary: Public ATUS Interview Data

Name	Description		File
TRTSPOUSE	Total nonwork-related time respondent spent with spouse (others may be present) (in minutes)		Respondent File
	Edited Universe:	All respondents	
	Valid Entries:	0 1440	Min Value Max Value
	*Note	This variable is computed using TUWHO_CODE information; time spent working and all activities for which who information is not collected, such as sleeping, are omitted from the calculation	
Name	Description		File
TRTUNMPART	Total nonwork-related time respondent spent with unmarried partner (others may be present) (in minutes)		Respondent File
	Edited Universe:	All respondents	
	Valid Entries:	0 1440	Min Value Max Value
	*Note	This variable is computed using TUWHO_CODE information; time spent working and all activities for which who information is not collected, such as sleeping, are omitted from the calculation	
Name	Description		File
TRWERNAL	TRERNWA: allocation flag		Respondent File
	Edited Universe:	TELF5 = 1 or 2 and TEIO1COW = 1 - 5	
	Valid Entries:	0	TRERNWA does not contain allocated information
		1	TRERNWA contains allocated information
Name	Description		File
TRWHONA	Who information not asked for activity		Who File
	Edited Universe:	All activities	
	Valid Entries:	0	TUWHO_CODE asked
		1	TUWHO_CODE not asked
Name	Description		File
TRYHHCHILD	Age of youngest household child < 18		Respondent File, Activity Summary File
	Edited Universe:	TRHHCHILD = 1	
	Valid Entries:	0 17	Min Value Max Value
Name	Description		File
TTHR	Hourly pay topcode flag		Respondent File
	Valid Entries:	0	Not topcoded
		1	Topcoded
	*Note	Indicates topcoding of hourly pay in earnings variables	

2024 ATUS Data Dictionary: Public ATUS Interview Data

Name	Description			File
TTOT	Overtime amount topcode flag			Respondent File
	Valid Entries:	0	Not topcoded	
		1	Topcoded	
	*Note	Indicates topcoding of overtime pay in earnings variables		
Name	Description			File
TTWK	Weekly earnings topcode flag			Respondent File
	Valid Entries:	0	Not topcoded	
		1	Topcoded	
	*Note	Indicates topcoding of weekly pay in earnings variables		
Name	Description			File
TUABSOT	In the last seven days, did you have a job either full or part time?			Respondent File
	Valid Entries:	1	Yes	
		2	No	
		3	Retired	
		4	Disabled	
		5	Unable to work	
Name	Description			File
TUACTDUR	Duration of activity in minutes (last activity not truncated at 4:00 a.m.)			Activity File
	Valid Entries:	1 9999	Min Value Max Value	
Name	Description			File
TUACTDUR24	Duration of activity in minutes (last activity truncated at 4:00 a.m.)			Activity File
	Valid Entries:	1 1440	Min Value Max Value	
Name	Description			File
TUACTIVITY_N	Activity line number			Activity File, Who File, EH Activity File
	Valid Entries:	1 91	Min Value Max Value	
Name	Description			File
TUBUS	Does anyone in the household own a business or a farm?			Respondent File
	Valid Entries:	1	Yes	
		2	No	

2024 ATUS Data Dictionary: Public ATUS Interview Data

Name	Description			File
TUBUS1	In the last seven days, did you do any unpaid work in the family business or farm?			Respondent File
	Valid Entries:	1	Yes	
		2	No	
Name	Description			File
TUBUS2OT	Do you receive payments or profits from the business?			Respondent File
	Valid Entries:	1	Yes	
		2	No	
Name	Description			File
TUBUSL1	TULINENO of farm or business owner (first owner)			Respondent File
	Valid Entries:	0 30	Min Value Max Value	
Name	Description			File
TUBUSL2	TULINENO of farm or business owner (second owner)			Respondent File
	Valid Entries:	0 30	Min Value Max Value	
Name	Description			File
TUBUSL3	TULINENO of farm or business owner (third owner)			Respondent File
	Valid Entries:	0 30	Min Value Max Value	
Name	Description			File
TUBUSL4	TULINENO of farm or business owner (fourth owner)			Respondent File
	Valid Entries:	0 30	Min Value Max Value	
Name	Description			File
TUCASEID	ATUS Case ID (14-digit identifier)			All Files
Name	Description			File
TUCC2	Time first household child < 13 woke up			Respondent File
	Valid Entries:	00:00:00 24:00:00	Min Value Max Value	
Name	Description			File
TUCC4	Time last household child < 13 went to bed			Respondent File
	Valid Entries:	00:00:00 24:00:00	Min Value Max Value	
Name	Description			File
TUCC5	Was at least one of your own household children < 13 in your care during this activity?			Activity File
	Valid Entries:	0	No	
		1	Yes	
		97	No additional activities involved childcare	

2024 ATUS Data Dictionary: Public ATUS Interview Data

Name	Description		File
TUCC5_CK	Reason respondent did not report secondary childcare activities for own household children		Respondent File
	Valid Entries:	1	No secondary childcare activities
		2	Respondent didn` t know
		3	Respondent refused to answer
		4	Child was away from home yesterday
		5	Respondent was away from home yesterday
Name	Description		File
TUCC5B	Was at least one of your non-own household children < 13 in your care during this activity?		Activity File
	Valid Entries:	0	No
		1	Yes
		97	No additional activities involved childcare
Name	Description		File
TUCC5B_CK	Reason respondent did not report secondary childcare activities for non-own household children		Respondent File
	Valid Entries:	1	No secondary childcare activities
		2	Respondent didn't know
		3	Respondent refused to answer
		4	Child was away from home yesterday
		5	Respondent was away from home yesterday
Name	Description		File
TUCC7	Was at least one of your own non-household children < 13 in your care during this activity?		Activity File
	Valid Entries:	0	No
		1	Yes
		97	No additional activities involved childcare
Name	Description		File
TUCC8	Other than household or own non-household children < 13, was there a child 0-12 in your care during this activity?		Activity File
	Valid Entries:	0	No
		1	Yes
		97	No additional activities involved childcare

2024 ATUS Data Dictionary: Public ATUS Interview Data

Name	Description		File
TUCC9	Are the non-own, non-household children you cared for in TUCC8 related to you?		Respondent File
	Valid Entries:	1	Yes
		2	No
		3	Some are, some are not
Name	Description		File
TUCUMDUR	Cumulative duration of activity lengths in minutes; last activity not truncated at 4:00am or 1440 minutes (cumulative total of TUACTIONDUR for each TUCASEID)		Activity File
	Valid Entries:	1 9999	Min Value Max Value
Name	Description		File
TUCUMDUR24	Cumulative duration of activity lengths in minutes; last activity truncated at 4:00am or 1440 minutes (cumulative total of TUACTIONDUR24 for each TUCASEID)		Activity File
	Valid Entries:	1 1440	Min Value Max Value
Name	Description		File
TUDIARYDATE	Date of diary day (date about which the respondent was interviewed)		Respondent File
	Valid Entries:	20240101 20241230	Min Value Max Value
	*Note	TUDIARYDATE is in YYYYMMDD format	
Name	Description		File
TUDIARYDAY	Day of the week of diary day (day of the week about which the respondent was interviewed)		Respondent File, Activity Summary File
	Valid Entries:	1	Sunday
		2	Monday
		3	Tuesday
		4	Wednesday
		5	Thursday
		6	Friday
		7	Saturday
Name	Description		File
TUDIS	Last time we spoke to someone in this household you were reported to have a disability. Does your disability prevent you from doing any kind of work for the next six months?		Respondent File
	Valid Entries:	1	Yes
		2	No
		3	Did not have a disability last time

2024 ATUS Data Dictionary: Public ATUS Interview Data

Name	Description		File
TUDIS1	Does your disability prevent you from accepting any kind of work during the next six months?		Respondent File
	Valid Entries:	1	Yes
		2	No
Name	Description		File
TUDIS2	Do you have a disability that prevents you from accepting any kind of work during the next six months?		Respondent File
	Valid Entries:	1	Yes
		2	No
Name	Description		File
TUDURSTOP	Method for reporting activity duration		Activity File
	Valid Entries:	1	Activity duration was entered
		2	Activity stop time was entered
Name	Description		File
TUEC24	At which times or during which activities did you provide that care or assistance yesterday?		Activity File
	Valid Entries:	1	Activity identified as eldercare
		96	All day
		97	No more activities
Name	Description		File
TUECLNO	Line number of eldercare recipient		EC Roster File
	Valid Entries:	2	Min Value
		35	Max Value
	*Note	If recipient is a household member, TUECLNO = TULINENO; if not a household member, TUECLNO = new line numbers (last tulineno+1)	
Name	Description		File
TUECYTD	Did you provide any eldercare or assistance yesterday?		Respondent File
	Valid Entries:	1	Yes
		2	No
Name	Description		File
TUELDER	Not including financial assistance or help you provided as part of your paid job, since the first of [REF_MONTH], have you provided any care of assistance for an adult who needed help because of a condition related to aging?		Respondent File
	Valid Entries:	1	Yes
		2	No
	*Note	The reference month is 3 months prior to the interview. For example, if the interview took place on March 15, the reference month would be December.	

2024 ATUS Data Dictionary: Public ATUS Interview Data

Name	Description			File
TUELFREQ	How often did you provide this care?			Respondent File
	Valid Entries:	1	Daily	
		2	Several times a week	
		3	About once a week	
		4	Several times a month	
		5	Once a month	
		6	One time	
		7	Other	
Name	Description			File
TUENUM	Since the first of [REF_MONTH], how many people have you provided this care to?			Respondent File
	Valid Entries:	0 5	Min Value Max Value	
	*Note	The reference month is 3 months prior to the interview. For example, if the interview took place March 15, the reference month is December. TUENUM is topcoded at 5 recipients.		
Name	Description			File
TUERN2	Weekly overtime earnings (2 implied decimals)			Respondent File
	Valid Entries:	0 288461	Min Value Max Value	
Name	Description			File
TUERNH1C	What is your hourly rate of pay on this job, excluding overtime pay, tips, or commissions? (2 implied decimals)			Respondent File
	Valid Entries:	0 9999	Min Value Max Value	
	*Note	Only asked if the respondent indicates that the recorded hourly rate read back by the interviewer is not correct		
Name	Description			File
TUFINLWGT	ATUS final weight			Respondent File, Activity Summary File
	Valid Entries:	0 9999999999	Min Value Max Value	
	*Note	For more information about TUFINLWGT, see chapter 7 of the ATUS User's Guide.		
Name	Description			File
TUFWK	In the last seven days did you do any work for pay or profit?			Respondent File
	Valid Entries:	1	Yes	
		2	No	
		3	Retired	
		4	Disabled	
		5	Unable to work	

2024 ATUS Data Dictionary: Public ATUS Interview Data

Name	Description		File
TUIO1MFG	Is this business or organization mainly manufacturing, retail trade, wholesale trade, or something else? (main job)		Respondent File
	Valid Entries:	1	Manufacturing
		2	Retail trade
		3	Wholesale trade
		4	Something else
Name	Description		File
TUIODP1	Last time we spoke to someone in this household, you were reported to work for (employer's name). Do you still work for (employer's name)? (main job)		Respondent File
	Valid Entries:	1	Yes
		2	No
Name	Description		File
TUIODP2	Have the usual activities and duties of your job changed since (month of CPS interview)? (main job)		Respondent File
	Valid Entries:	1	Yes
		2	No
Name	Description		File
TUIODP3	Last time we spoke to someone in this household, you were reported as (occupation) and your usual duties were (activities). Is this an accurate description of your current job? (main job)		Respondent File
	Valid Entries:	1	Yes
		2	No
Name	Description		File
TULAY	During the last seven days were you on layoff from your job?		Respondent File
	Valid Entries:	1	Yes
		2	No
		3	Retired
		4	Disabled
		5	Unable to work
Name	Description		File
TULAY6M	Have you been given any indication that you will be recalled to work within the next 6 months?		Respondent File
	Valid Entries:	1	Yes
		2	No

2024 ATUS Data Dictionary: Public ATUS Interview Data

Name	Description			File
TULAYAVR	Why could you not have started a job in the last week?			Respondent File
	Valid Entries:	1	Own temporary illness	
		2	Going to school	
		3	Other	
Name	Description			File
TULAYDT	Has your employer given you a date to return to work? (to layoff job)			Respondent File
	Valid Entries:	1	Yes	
		2	No	
Name	Description			File
TULINENO	ATUS person line number			ATUS-CPS File, Respondent File, Roster File, Who File, EH Respondent File, EC Roster File
	Valid Entries:	1 30	Min Value Max Value	
	*Note	The person selected to be interviewed for ATUS is always TULINENO = 1		
Name	Description			File
TULK	Have you been doing anything to find work during the last four weeks?			Respondent File
	Valid Entries:	1	Yes	
		2	No	
		3	Retired	
		4	Disabled	
		5	Unable to work	
Name	Description			File
TULKA VR	Why could you not have started a job last week?			Respondent File
	Valid Entries:	1	Waiting for new job to begin	
		2	Own temporary illness	
		3	Going to school	
		4	Other	

2024 ATUS Data Dictionary: Public ATUS Interview Data

Name	Description			File
TULKDK1	You said you have been trying to find work. How did you go about looking? (first method)			Respondent File
	Valid Entries:	1	Contacted employer directly/interview	
		2	Contacted public employment agency	
		3	Contacted private employment agency	
		4	Contacted friends or relatives	
		5	Contacted school/university employment center	
		6	Sent out resumes/filled out applications	
		7	Checked union/professional registers	
		8	Placed or answered ads	
		9	Other active	
		10	Looked at ads	
		11	Attended job training programs/courses	
		12	Nothing	
		13	Other passive	
	*Note	In order to research job search methods, users must combine all fields TELKM1, TULKM2 - TULKM6, TULKDK1 - TULKDK6, and TULKPS1 - TULKPS6		
Name	Description			File
TULKDK2	TULKDK1 text: (second method)			Respondent File
	Valid Entries:	1	Contacted employer directly/interview	
		2	Contacted public employment agency	
		3	Contacted private employment agency	
		4	Contacted friends or relatives	
		5	Contacted school/university employment center	
		6	Sent out resumes/filled out applications	
		7	Checked union/professional registers	
		8	Placed or answered ads	
		9	Other active	
		10	Looked at ads	
		11	Attended job training programs/courses	
		13	Other passive	
		97	No additional job search activities	
	*Note	In order to research job search methods, users must combine all fields TELKM1, TULKM2 - TULKM6, TULKDK1 - TULKDK6, and TULKPS1 - TULKPS6		
Name	Description			File
TULKDK3	TULKDK1 text: (third method)			Respondent File
	Valid Entries:	1	Min Value	
		97	Max Value	
	*Note	See valid values for TULKDK2		

2024 ATUS Data Dictionary: Public ATUS Interview Data

Name	Description			File
TULKDK4	TULKDK1 text: (fourth method)			Respondent File
	Valid Entries:	1 97	Min Value Max Value	
	*Note	See valid values for TULKDK2		
Name	Description			File
TULKDK5	TULKDK1 text: (fifth method)			Respondent File
	Valid Entries:	1 97	Min Value Max Value	
	*Note	See valid values for TULKDK2		
Name	Description			File
TULKDK6	TULKDK1 text: (sixth method)			Respondent File
	Valid Entries:	1 97	Min Value Max Value	
	*Note	See valid values for TULKDK2		
Name	Description			File
TULKM2	What are all of the things you have done to find work during the last 4 weeks? (second method)			Respondent File
	Valid Entries:	1	Contacted employer directly/interview	
		2	Contacted public employment agency	
		3	Contacted private employment agency	
		4	Contacted friends or relatives	
		5	Contacted school/university employment center	
		6	Sent out resumes/filled out applications	
		7	Checked union/professional registers	
		8	Placed or answered ads	
		9	Other active	
		10	Looked at ads	
		11	Attended job training programs/courses	
		13	Other passive	
		97	No additional job search activities	
	*Note	In order to research job search methods, users must combine all fields TELKM1, TULKM2 - TULKM6, TULKDK1 - TULKDK6, and TULKPS1 - TULKPS6		
Name	Description			File
TULKM3	TULKM2 text: (third method)			Respondent File
	Valid Entries:	1 97	Min Value Max Value	
	*Note	See valid values for TULKM2		

2024 ATUS Data Dictionary: Public ATUS Interview Data

Name	Description			File
TULKM4	TULKM2 text: (fourth method)			Respondent File
	Valid Entries:	1 97	Min Value Max Value	
	*Note	See valid values for TULKM2		
Name	Description			File
TULKM5	TULKM2 text: (fifth method)			Respondent File
	Valid Entries:	1 97	Min Value Max Value	
	*Note	See valid values for TULKM2		
Name	Description			File
TULKM6	TULKM2 text: (sixth method)			Respondent File
	Valid Entries:	1 97	Min Value Max Value	
	*Note	See valid values for TULKM2		
Name	Description			File
TULKPS1	Can you tell me more about what you did to search for work? (first method)			Respondent File
	Valid Entries:	1	Contacted employer directly/interview	
		2	Contacted public employment agency	
		3	Contacted private employment agency	
		4	Contacted friends or relatives	
		5	Contacted school/university employment center	
		6	Sent out resumes/filled out applications	
		7	Checked union/professional registers	
		8	Placed or answered ads	
		9	Other active	
		10	Looked at ads	
		11	Attended job training programs/courses	
		12	Nothing	
		13	Other passive	
		97	No more job search activities	
	*Note	In order to research job search methods, users must combine all fields TELKM1, TULKM2 - TULKM6, TULKDK1 - TULKDK6, and TULKPS1 - TULKPS6		

2024 ATUS Data Dictionary: Public ATUS Interview Data

Name	Description			File
TULKPS2	TULKPS1 text: (second method)			Respondent File
	Valid Entries:	1	Contacted employer directly/interview	
		2	Contacted public employment agency	
		3	Contacted private employment agency	
		4	Contacted friends or relatives	
		5	Contacted school/university employment center	
		6	Sent out resumes/filled out applications	
		7	Checked union/professional registers	
		8	Placed or answered ads	
		9	Other active	
		10	Looked at ads	
		11	Attended job training programs/courses	
		13	Other passive	
		97	No additional job search activities	
	*Note	In order to research job search methods, users must combine all fields TELKM1, TULKM2 - TULKM6, TULKDK1 - TULKDK6, and TULKPS1 - TULKPS6		
Name	Description			File
TULKPS3	TULKPS1 text: (third method)			Respondent File
	Valid Entries:	1 97	Min Value Max Value	
	*Note	See valid values for TULKPS2		
Name	Description			File
TULKPS4	TULKPS1 text: (fourth method)			Respondent File
	Valid Entries:	1 97	Min Value Max Value	
	*Note	See valid values for TULKPS2		
Name	Description			File
TULKPS5	TULKPS1 text: (fifth method)			Respondent File
	Valid Entries:	1 97	Min Value Max Value	
	*Note	See valid values for TULKPS2		
Name	Description			File
TULKPS6	TULKPS1 text: (sixth method)			Respondent File
	Valid Entries:	1 97	Min Value Max Value	
	*Note	See valid values for TULKPS2		
Name	Description			File
TUMONTH	Month of diary day (month of day about which ATUS respondent was interviewed)			Respondent File
	Valid Entries:	1 12	Min Value Max Value	

2024 ATUS Data Dictionary: Public ATUS Interview Data

Name	Description		File
TURETOT	The last time we spoke to someone in this household you were reported to be retired. Are you still retired?		Respondent File
	Valid Entries:	1	Yes
		2	No
		3	Was not retired last time
Name	Description		File
TUSPABS	In the last seven days, did your spouse or unmarried partner have a job either full or part time?		Respondent File
	Valid Entries:	1	Yes
		2	No
		3	Retired
		4	Disabled
		5	Unable to work
Name	Description		File
TUSPUSFT	Does your spouse or unmarried partner usually work 35 hours or more per week?		Respondent File
	Valid Entries:	1	Yes
		2	No
		3	Hours vary
		4	No longer has a job
Name	Description		File
TUSPWK	In the last seven days, did your spouse or unmarried partner do any work for pay or profit?		Respondent File
	Valid Entries:	1	Yes
		2	No
		3	Retired
		4	Disabled
		5	Unable to work
Name	Description		File
TUSTARTTIM	Activity start time		Activity File
	Valid Entries:	00:00:00 24:00:00	Min Value Max Value
Name	Description		File
TUSTOPTIME	Activity stop time		Activity File
	Valid Entries:	00:00:00 24:00:00	Min Value Max Value

2024 ATUS Data Dictionary: Public ATUS Interview Data

Name		Description		File
TUTIER1CODE		Lexicon Tier 1: 1st and 2nd digits of 6-digit activity code		Activity File
		Valid Entries:	01 50	Min Value Max Value
		*Note	Six-digit activity codes are created by combining TUTIER1CODE, TUTIER2CODE, and TUTIER3CODE.	
Name		Description		File
TUTIER2CODE		Lexicon Tier 2: 3rd and 4th digits of 6-digit activity code		Activity File
		Valid Entries:	01 99	Min Value Max Value
		*Note	Six-digit activity codes are created by combining TUTIER1CODE, TUTIER2CODE, and TUTIER3CODE.	
Name		Description		File
TUTIER3CODE		Lexicon Tier 3: 5th and 6th digits of 6-digit activity code		Activity File
		Valid Entries:	01 99	Min Value Max Value
		*Note	Six-digit activity codes are created by combining TUTIER1CODE, TUTIER2CODE, and TUTIER3CODE.	

2024 ATUS Data Dictionary: Public ATUS Interview Data

Name	Description			File
TUWHO_CODE	Who was in the room with you / Who accompanied you?			Who File
	Valid Entries:	18	Alone	
		19	Alone	
		20	Spouse	
		21	Unmarried partner	
		22	Own household child	
		23	Grandchild	
		24	Parent	
		25	Brother/sister	
		26	Other related person	
		27	Foster child	
		28	Housemate/roommate	
		29	Roomer/boarder	
		30	Other nonrelative	
		40	Own nonhousehold child < 18	
		51	Parents (not living in household)	
		52	Other nonhousehold family members < 18	
		53	Other nonhousehold family members 18 and older (including parents-in-law)	
		54	Friends	
		56	Neighbors/acquaintances	
		57	Other nonhousehold children < 18	
		58	Other nonhousehold adults 18 and older	
		59	Boss or manager	
		60	People whom I supervise	
		61	Co-workers	
		62	Customers	
	*Note	Not collected for activities with activity codes of 0101xx, 0102xx, 0104xx, 500105, or 500106. Also not collected for 060101 if respondent is enrolled in high school (TESCHLVL = 1). There is no distinction between 18 and 19. All codes of 40 or greater refer to people living outside of the respondent's household.		
Name	Description			File
TUYEAR	Year of diary day (year of day about which respondent was interviewed)			Respondent File
	Valid Entries:	2024	Min Value	
		2024	Max Value	
Name	Description			File
TXABSRN	TEABSRN: allocation flag			Respondent File
	Valid Entries:	0	Min Value	
		53	Max Value	
	*Note	See Introduction for allocation flag values		

2024 ATUS Data Dictionary: Public ATUS Interview Data

Name	Description			File
TXAGE	TEAGE: allocation flag			Roster File
	Valid Entries:	00	Value - no change	
		01	Blank - no change	
		02	Don` t know - no change	
		03	Refused - no change	
		10	Value to value	
		11	Blank to value	
		12	Don` t know to value	
		13	Refused to value	
		20	Value to longitudinal value	
		21	Blank to longitudinal value	
		22	Don` t know to longitudinal value	
		23	Refused to longitudinal value	
		30	Value to allocated longitudinal value	
		31	Blank to allocated longitudinal value	
		32	Don` t know to allocated longitudinal value	
		33	Refused to allocated longitudinal value	
		40	Value to allocated value	
		41	Blank to allocated value	
		42	Don` t know to allocated value	
		43	Refused to allocated value	
		50	Value to blank	
		52	Don` t know to blank	
		53	Refused to blank	
		60	Topcoded	
		61	Topcoded and allocated	
	*Note	There are two valid values (60 and 61) that are only valid for TXAGE and TXAGE_EC		
Name	Description			File
TXAGE_EC	TEAGE_EC: allocation flag			EC Roster File
	Valid Entries:	0	Min Value	
		61	Max Value	
	*Note	See TXAGE for allocation flag values		
Name	Description			File
TXELDUR	TEELDUR: allocation flag			EC Roster File
	Valid Entries:	0	Min Value	
		53	Max Value	
	*Note	See Introduction for allocation flag values		

2024 ATUS Data Dictionary: Public ATUS Interview Data

Name	Description			File
TXELWHO	TEELWHO: allocation flag			EC Roster File
	Valid Entries:	0 53	Min Value Max Value	
	*Note	See Introduction for allocation flag values		
Name	Description			File
TXELYRS	TEELYRS: allocation flag			EC Roster File
	Valid Entries:	0 53	Min Value Max Value	
	*Note	See Introduction for allocation flag values		
Name	Description			File
TXERN	TEERN: allocation flag			Respondent File
	Valid Entries:	0 53	Min Value Max Value	
	*Note	See Introduction for allocation flag values		
Name	Description			File
TXERNH1O	TEERNH1O: allocation flag			Respondent File
	Valid Entries:	0 53	Min Value Max Value	
	*Note	See Introduction for allocation flag values		
Name	Description			File
TXERNH2	TEERNH2: allocation flag			Respondent File
	Valid Entries:	0 53	Min Value Max Value	
	*Note	See Introduction for allocation flag values		
Name	Description			File
TXERNHRO	TEERNHRO: allocation flag			Respondent File
	Valid Entries:	0 53	Min Value Max Value	
	*Note	See Introduction for allocation flag values		
Name	Description			File
TXERNHRY	TEERNHRY: allocation flag			Respondent File
	Valid Entries:	0 53	Min Value Max Value	
	*Note	See Introduction for allocation flag values		
Name	Description			File
TXERNPER	TEERNPER: allocation flag			Respondent File
	Valid Entries:	0 53	Min Value Max Value	
	*Note	See Introduction for allocation flag values		

2024 ATUS Data Dictionary: Public ATUS Interview Data

Name	Description			File
TXERNRT	TEERNRT: allocation flag			Respondent File
	Valid Entries:	0 53	Min Value Max Value	
	*Note	See Introduction for allocation flag values		
Name	Description			File
TXERNUOT	TEERNUOT: allocation flag			Respondent File
	Valid Entries:	0 53	Min Value Max Value	
	*Note	See Introduction for allocation flag values		
Name	Description			File
TXERNWKP	TEERNWKP: allocation flag			Respondent File
	Valid Entries:	0 53	Min Value Max Value	
	*Note	See Introduction for allocation flag values		
Name	Description			File
TXHRFTPT	TEHRFTPT: allocation flag			Respondent File
	Valid Entries:	0 53	Min Value Max Value	
	*Note	See Introduction for allocation flag values		
Name	Description			File
TXHRUSL1	TEHRUSL1: allocation flag			Respondent File
	Valid Entries:	0 53	Min Value Max Value	
	*Note	See Introduction for allocation flag values		
Name	Description			File
TXHRUSL2	TEHRUSL2: allocation flag			Respondent File
	Valid Entries:	0 53	Min Value Max Value	
	*Note	See Introduction for allocation flag values		
Name	Description			File
TXHRUSLT	TEHRUSLT: allocation flag			Respondent File
	Valid Entries:	0 53	Min Value Max Value	
	*Note	See Introduction for allocation flag values		
Name	Description			File
TXIO1COW	TEIO1COW: allocation flag			Respondent File
	Valid Entries:	0 53	Min Value Max Value	
	*Note	See Introduction for allocation flag values		

2024 ATUS Data Dictionary: Public ATUS Interview Data

Name	Description			File
TXIO1ICD	TEIO1ICD: allocation flag			Respondent File
	Valid Entries:	0 53	Min Value Max Value	
	*Note	See Introduction for allocation flag values		
Name	Description			File
TXIO1OCD	TEIO1OCD: allocation flag			Respondent File
	Valid Entries:	0 53	Min Value Max Value	
	*Note	See Introduction for allocation flag values		
Name	Description			File
TXLAYAVL	TELAYAVL: allocation flag			Respondent File
	Valid Entries:	0 53	Min Value Max Value	
	*Note	See Introduction for allocation flag values		
Name	Description			File
TXLAYLK	TELAYLK: allocation flag			Respondent File
	Valid Entries:	0 53	Min Value Max Value	
	*Note	See Introduction for allocation flag values		
Name	Description			File
TXLFS	TELFS: allocation flag			Respondent File
	Valid Entries:	0 53	Min Value Max Value	
	*Note	See Introduction for allocation flag values		
Name	Description			File
TXLKAVL	TELKAVL: allocation flag			Respondent File
	Valid Entries:	0 53	Min Value Max Value	
	*Note	See Introduction for allocation flag values		
Name	Description			File
TXLKM1	TELKM1: allocation flag			Respondent File
	Valid Entries:	0 53	Min Value Max Value	
	*Note	See Introduction for allocation flag values		
Name	Description			File
TXMJOT	TEMJOT: allocation flag			Respondent File
	Valid Entries:	0 53	Min Value Max Value	
	*Note	See Introduction for allocation flag values		

2024 ATUS Data Dictionary: Public ATUS Interview Data

Name	Description			File
TXRET1	TERET1: allocation flag			Respondent File
	Valid Entries:	0 53	Min Value Max Value	
	*Note	See Introduction for allocation flag values		
Name	Description			File
TXRRP	TERRP: allocation flag			Roster File
	Valid Entries:	0 53	Min Value Max Value	
	*Note	See Introduction for allocation flag values		
Name	Description			File
TXSCHENR	TESCHENR: allocation flag			Respondent File
	Valid Entries:	0 53	Min Value Max Value	
	*Note	See Introduction for allocation flag values		
Name	Description			File
TXSCHFT	TESCHFT: allocation flag			Respondent File
	Valid Entries:	0 53	Min Value Max Value	
	*Note	See Introduction for allocation flag values		
Name	Description			File
TXSCHLVL	TESCHLVL: allocation flag			Respondent File
	Valid Entries:	0 53	Min Value Max Value	
	*Note	See Introduction for allocation flag values		
Name	Description			File
TXSEX	TESEX: allocation flag			Roster File
	Valid Entries:	0 53	Min Value Max Value	
	*Note	See Introduction for allocation flag values		
Name	Description			File
TXSPEMPNOT	TESPEMPNOT: allocation flag			Respondent File
	Valid Entries:	0 53	Min Value Max Value	
	*Note	See Introduction for allocation flag values		
Name	Description			File
TXSPUHS	TESPUHS: allocation flag			Respondent File
	Valid Entries:	0 53	Min Value Max Value	
	*Note	See Introduction for allocation flag values		

2024 ATUS Data Dictionary: Public ATUS Interview Data

Name	Description			File
TXTCC	TRTCC_LN and TRTCC: allocation flag			Respondent File
	Valid Entries:	0	TRTCC_LN and TRTCC do not contain allocated data	
		1	TRTCC_LN and TRTCC contain allocated data	
	*Note	A value of 1 indicates that at least one of the following variables is allocated: TRTOHH_LN, TRTNOHH_LN, or TRTONHH_LN		
Name	Description			File
TXTCCTOT	TRTCCTOT_LN and TRTCCTOT: allocation flag			Respondent File
	Valid Entries:	0	TRTCCTOT_LN and TRTCCTOT do not contain allocated data	
		1	TRTCCTOT_LN and TRTCCTOT contain allocated data	
	*Note	A value of 1 indicates that at least one of the following variables is allocated: TRTCOC_LN, TRTOHH_LN, TRTNOHH_LN, or TRTONHH_LN		
Name	Description			File
TXTCOC	TRTCOC_LN and TRTCOC: allocation flag			Respondent File
	Valid Entries:	0	TRTCOC_LN and TRTCOC do not contain allocated data	
		1	TRTCOC_LN and TRTCOC contain allocated data	
	*Note	Allocated values are based on time spent with non-own non-household children < 18 when no other non-household adult was present. Calculations do not include activities with activity codes of 0101xx, 0301xx, 0302xx, 0303xx, 0401xx, 0402xx, 0403xx, 180301, 180302, 180303, 180401, 180402, or 180403.		
Name	Description			File
TXTHH	TRTHH_LN and TRTHH: allocation flag			Respondent File
	Valid Entries:	0	TRTHH_LN and TRTHH do not contain allocated data	
		1	TRTHH_LN and TRTHH contain allocated data	
	*Note	A value of 1 indicates that at least one of the following variables is allocated: TRTOHH_LN or TRTNOHH_LN		
Name	Description			File
TXTNOHH	TRTNOHH_LN and TRTNOHH: allocation flag			Respondent File
	Valid Entries:	0	TRTNOHH_LN and TRTNOHH do not contain allocated data	
		1	TRTNOHH_LN and TRTNOHH contain allocated data	
	*Note	Allocated values are based on time spent with non-own household children < 13. Calculations do not include activities with activity codes of 0101xx, 0301xx, 0302xx, 0303xx, 180301, 180302, or 180303. They also do not include any activities or parts of any activities in which no household child was awake (determined by TUCC2 and TUCC4).		
Name	Description			File
TXTO	TRTO_LN and TRTO: allocation flag			Respondent File
	Valid Entries:	0	TRTO_LN and TRTO do not contain allocated data	
		1	TRTO_LN and TRTO contain allocated data	
	*Note	A value of 1 indicates that at least one of the following variables is allocated: TRTOHH_LN or TRTONHH_LN		

2024 ATUS Data Dictionary: Public ATUS Interview Data

Name	Description			File
TXTOHH	TRTOHH_LN and TRTOHH: allocation flag			Respondent File
	Valid Entries:	0	TRTOHH_LN and TRTOHH do not contain allocated data	
		1	TRTOHH_LN and TRTOHH contain allocated data	
	*Note	Allocated values are based on time spent with own household children < 13. Calculations do not include activities with activity codes of 0101xx, 0301xx, 0302xx, 0303xx, 180301, 180302, or 180303. They also do not include any activities or parts of any activities in which no household child was awake (determined by TUCC2 and TUCC4).		
Name	Description			File
TXTONHH	TRTONHH_LN and TRTONHH: allocation flag			Respondent File
	Valid Entries:	0	TRTONHH_LN and TRTONHH do not contain allocated data	
		1	TRTONHH_LN and TRTONHH contain allocated data	
	*Note	Allocated values are based on time spent with own non-household children < 13. Calculations do not include activities with activity codes of 0101xx, 0301xx, 0302xx, 0303xx, 0401xx, 0402xx, 0403xx, 180301, 180302, 180303, 180401, 180402, or 180403.		
Name	Description			File
TXWHERE	TEWHERE: allocation flag			Activity File
	Valid Entries:	0 53	Min Value Max Value	
	*Note	See Introduction for allocation flag values		

APPENDIX A

Detailed Industry Code using the 2017 Census Industry Classification System (Starting January 2020) (TRDTIND1)

TRDTIND1	Description	TEIO1ICD
1	Agriculture	0170-0180, 0290
2	Forestry, logging, fishing, hunting, and trapping	0190-0280
3	Mining, quarrying, and oil and gas extraction	0370-0490
4	Construction	770
5	Nonmetallic mineral product manufacturing	2470-2590
6	Primary metals and fabricated metal products	2670-2990
7	Machinery manufacturing	3070-3291
8	Computer and electronic product manufacturing	3365-3390
9	Electrical equipment, appliance manufacturing	3470, 3490
10	Transportation equipment manufacturing	3570-3690
11	Wood products	3770-3875
12	Furniture and fixtures manufacturing	3895
13	Miscellaneous and not specified manufacturing	3960-3990
14	Food manufacturing	1070-1290
15	Beverage and tobacco products	1370, 1390
16	Textile, apparel, and leather manufacturing	1470-1790
17	Paper and printing	1870-1990
18	Petroleum and coal products	2070, 2090
19	Chemical manufacturing	2170-2290
20	Plastics and rubber products	2370-2390
21	Wholesale trade	4070-4590
22	Retail trade	4670-5790
23	Transportation and warehousing	6070-6390
24	Utilities	0570-0690
25	Publishing industries (except internet)	6470-6490
26	Motion picture and sound recording industries	6570, 6590
27	Broadcasting (except internet)	6670
28	Internet publishing and broadcasting	6672
29	Telecommunications	6680, 6690
30	Internet service providers and data processing services	6695
31	Other information services	6770, 6780
32	Finance	6870-6970
33	Insurance	6991, 6692
34	Real estate	7071, 7072
35	Rental and leasing services	7080-7190
36	Professional, scientific, and technical services	7270-7490
37	Management of companies and enterprises	7570
38	Administrative and support services	7580-7780
39	Waste management and remediation services	7790
40	Educational services	7860-7890

41	Hospitals	8191, 8192
42	Health care services, except hospitals	7970-8180, 8270, 8290
43	Social assistance	8370-8470
44	Arts, entertainment, and recreation	8560-8590
45	Accommodation	8660, 8670
46	Food services and drinking places	8680, 8690
47	Repair and maintenance	8770-8891
48	Personal and laundry services	8970-9090
49	Membership associations and organizations	9160-9190
50	Private households	9290
51	Public administration	9370-9590

Detailed Occupation Codes using the 2018 Census Occupation Classification system (Starting January 2020) (TRDTOCC1)

TRDTOCC1	Description	Census Occupation Code TEIO1OCD
1	Management Occupations	0010–0440
2	Business and financial operations occupations	0500–0960
3	Computer and mathematical science occupations	1000–1240
4	Architecture and engineering occupations	1300–1560
5	Life, Physical, and social science occupations	1600–1980
6	Community and social service occupations	2000–2060
7	Legal occupations	2100–2180
8	Educational instruction and library occupations	2200–2555
9	Arts, design, entertainment, sports, and media occupations	2600–2970
10	Healthcare practitioner and technical occupations	3000–3550
11	Healthcare support occupations	3600–3655
12	Protective service occupations	3700–3960
13	Food preparation and serving related occupations	4000–4160
14	Building and grounds cleaning and maintenance occupations	4200–4255
15	Personal care and service occupations	4300–4655
16	Sales and related occupations	4700–4965
17	Office and administrative support occupations	5000–5940
18	Farming, fishing, and forestry occupations	6000–6130
19	Construction and extraction occupations	6200–6950
20	Installation, maintenance, and repair occupations	7000–7640
21	Production occupations	7700–8990
22	Transportation and material moving occupations	9000–9760

Industry Codes (TEIO1ICD)

2017 Census Industry Codes available at www.bls.gov/tus/iocodes/census17icodes.pdf

Occupation Codes (TEIO1OCD)

2018 Census Occupation Classification Codes available at www.bls.gov/tus/iocodes/census18ocodes.pdf